





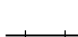



# Threatened & Endangered Species Map Phase I

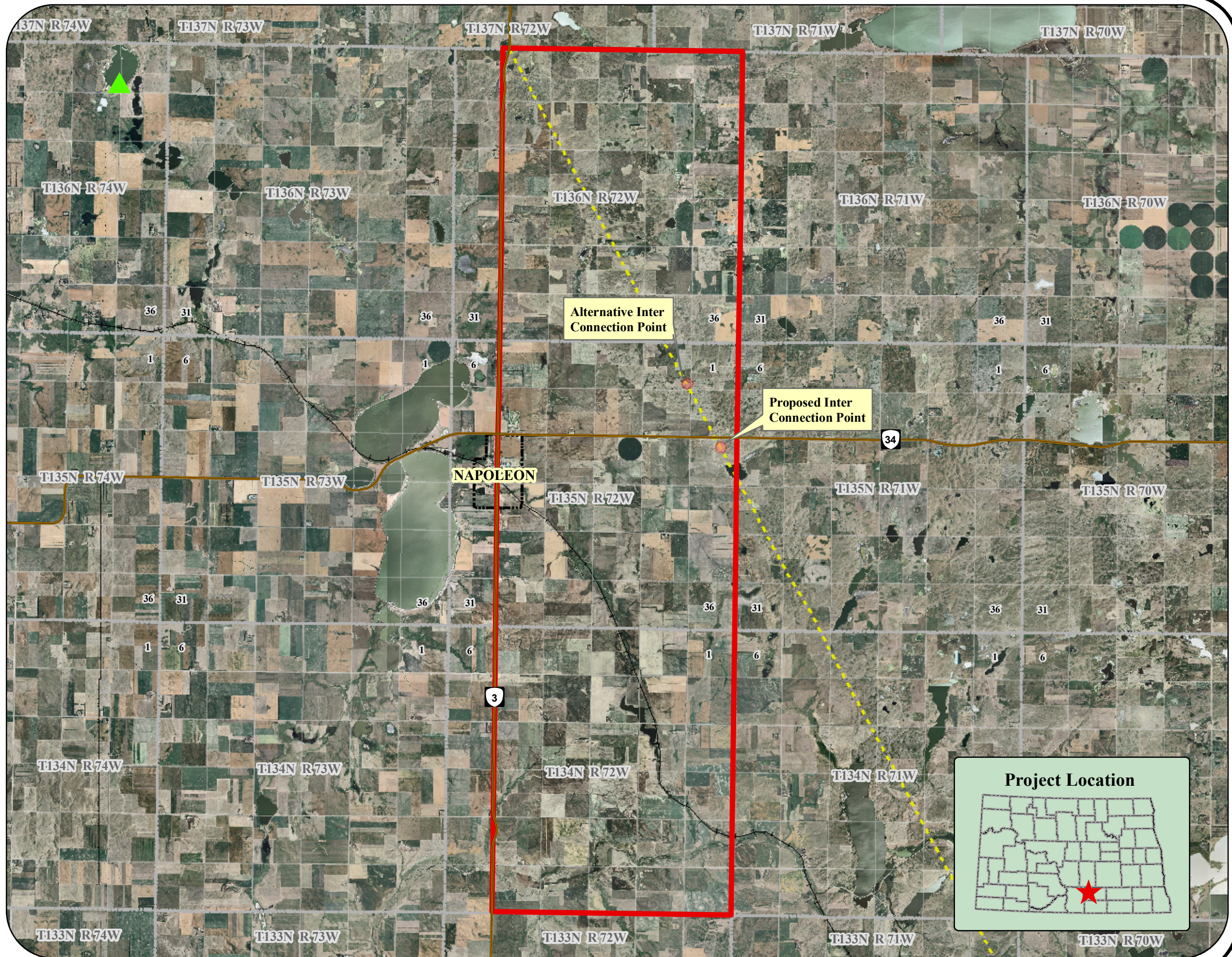
## Species of Concern

-  Animal
-  Plant
-  State Highway
-  Phase I Project Boundary
-  Existing 345kv Transmission Line
-  Township Line
-  Railroad
-  Corporate Boundary

Base map data downloaded from the ND GIS Data Hub. Natural Heritage Species of Concern are part of the North Dakota Natural Heritage Inventory provided by the North Dakota Parks & Recreation Department. Background is 2006 USDA-FSA Aerial Photography.



0 1.25 2.5 5 Miles



### Threatened & Endangered Species Map - Phase I

Scale: AS SHOWN	Drawn by: KZS	Checked by:	Project No.: 5192-000	Date: 07/3/08	Sheet:
--------------------	------------------	-------------	--------------------------	------------------	--------

Map created by:  

**Houston Engineering, Inc.**  
 6901 E. Fish Lake Rd., Suite 140  
 Maple Grove, MN 55369  
 Bus: (763) 493-4522  
 Fax: (763) 493-5572