



# US Fish & Wildlife Easements Phase I North

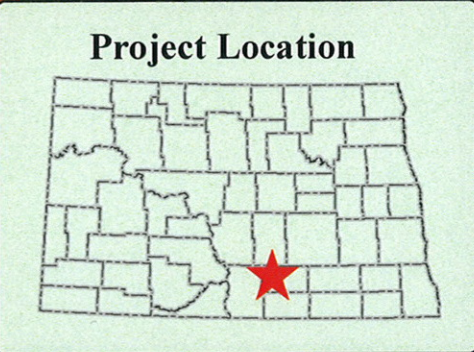
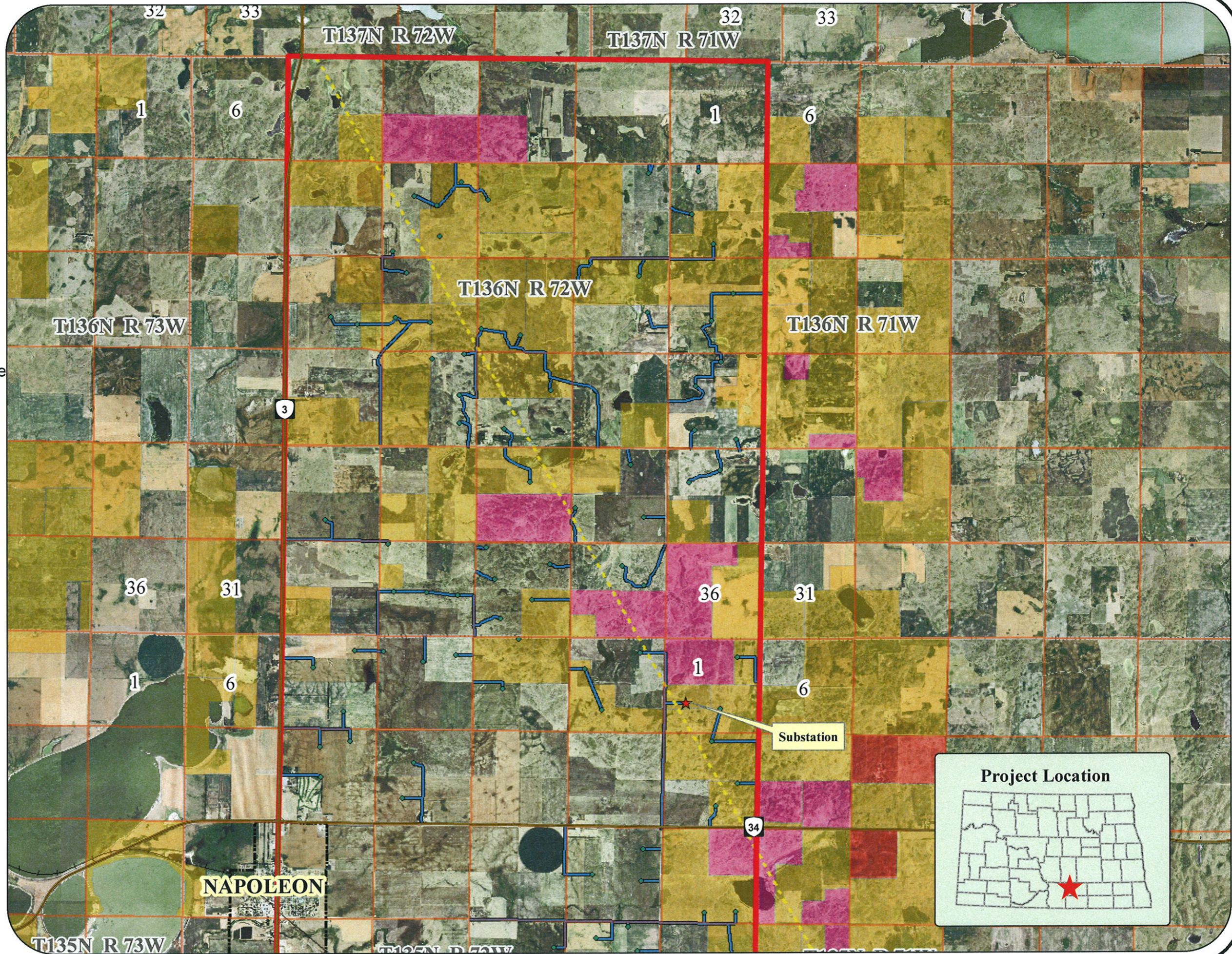
- ★ Substation
- Wind Turbines
- Phase I Project Boundary
- Section Line
- Existing 345kv Transmission Line
- Access Roads
- Conservation Easement
- Grassland Easement
- Wetland Easements
- Township Line
- Railroad
- Corporate Boundary



0 0.25 0.5 1 1.5 2 Miles

Data downloaded from the ND GIS Data Hub.  
Background is 2006 USDA-FSA Aerial Photography.

US Fish & Wildlife Easements - Phase I North					
Scale: AS SHOWN	Drawn by: KZS	Checked by:	Project No.: 5192-000	Date: 09/04/08	Sheet:
Map created by: <b>Houston Engineering, Inc.</b> 6901 E. Fish Lake Rd., Suite 140 Maple Grove, MN 55369 Bus: (763) 493-4522 Fax: (763) 493-5572					





# US Fish & Wildlife Easements Phase I South

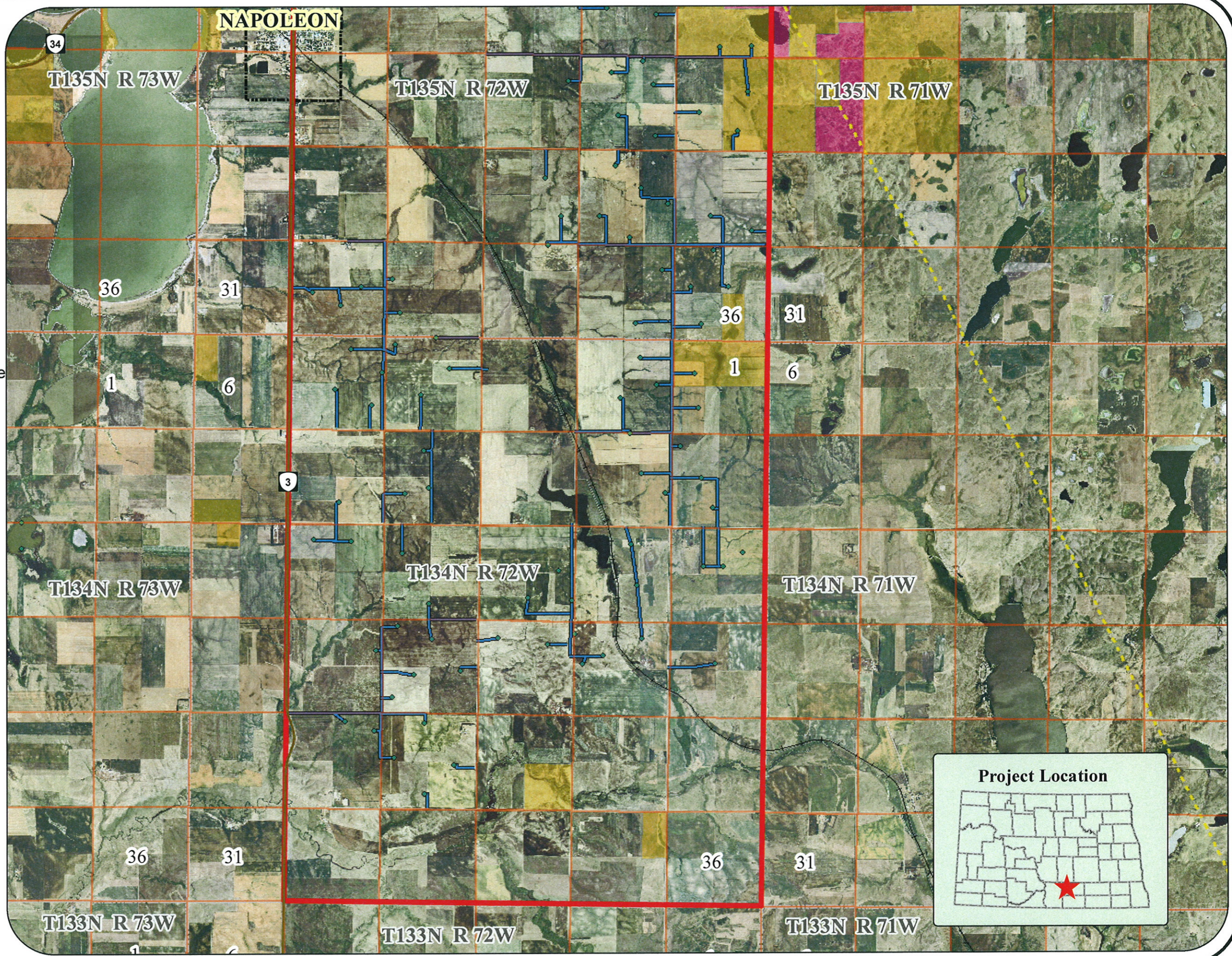
- ★ Substation
- Wind Turbines
- Phase I Project Boundary
- Section Line
- Existing 345kv Transmission Line
- Access Roads
- Conservation Easement
- Grassland Easement
- Wetland Easements
- Township Line
- Railroad
- Corporate Boundary



0 0.25 0.5 1 1.5 2 Miles

Data downloaded from the ND GIS Data Hub.  
Background is 2006 USDA-FSA Aerial Photography.

US Fish & Wildlife Easements - Phase I South					
Scale: AS SHOWN	Drawn by: KZS	Checked by:	Project No.: 5192-000	Date: 09/04/08	Sheet:
Map created by: <b>Houston Engineering, Inc.</b> 6901 E. Fish Lake Rd., Suite 140 Maple Grove, MN 55369 Bus: (763) 493-4522 Fax: (763) 493-5572					





# Avoidance Area Phase I North

- Phase I Project Boundary
- ★ Substation
- Wind Turbines
- Existing 345kv Transmission Line
- Cable Lines Lines
- Access Roads
- Cultural\_Res\_points\_12Mar08
- Cultural\_Res\_buffers\_12Mar08

### Q3 Zones

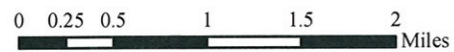
- ZONE**
- AE - Area within 100-year floodplain.
  - X - Area outside of 500-year floodplain.
  - X500 - Area within 500-year floodplain.

### Wetlands (NWI)

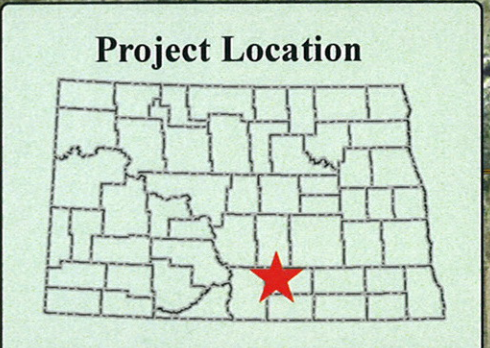
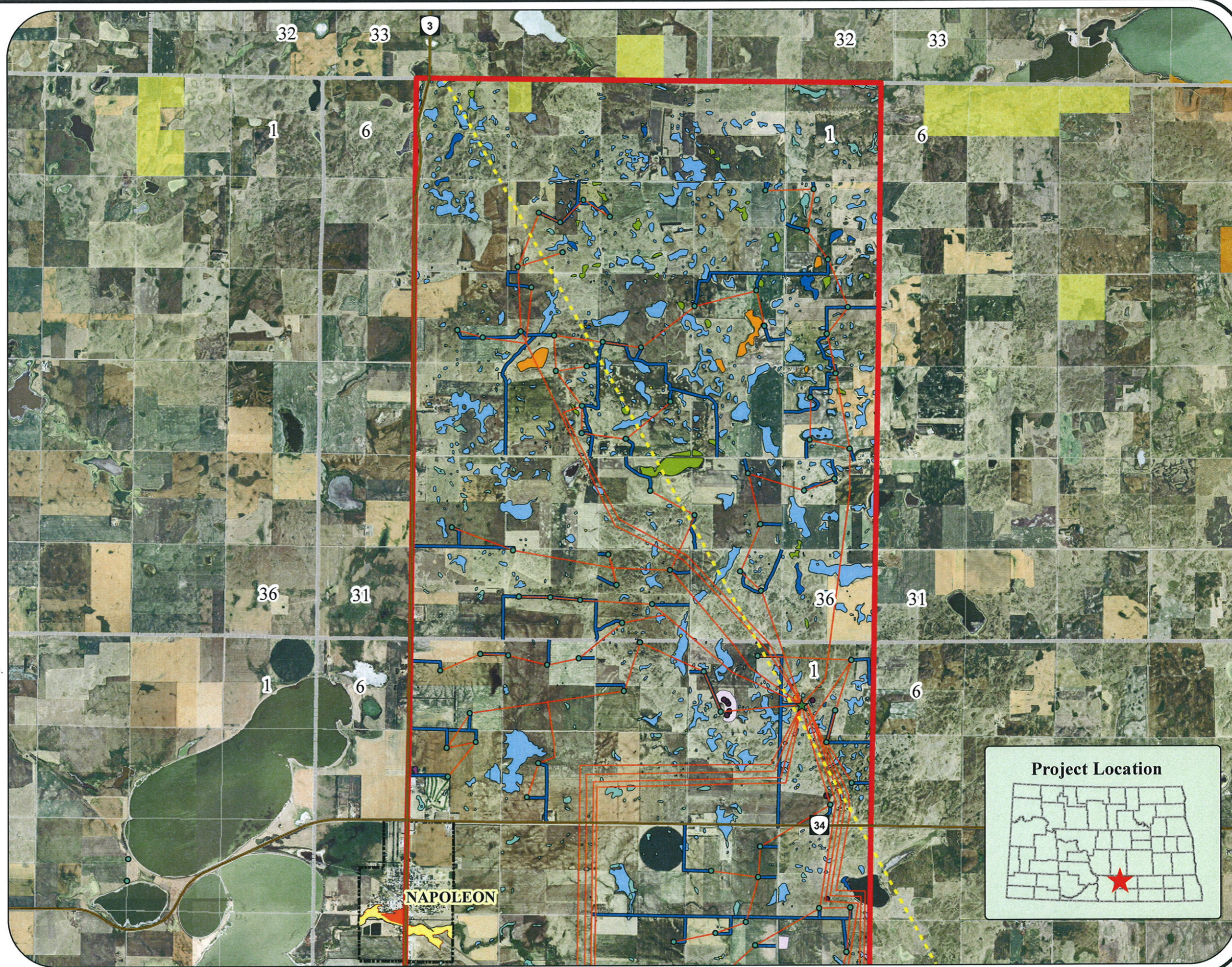
- P, PABF
- P, PABFX
- P, PEMABF
- P, PEMA
- P, PEMC
- P, PEMF
- P, PFO1A

- Township Line
- Section Line

Data downloaded from the ND GIS Data Hub. National Wetlands Inventory (NWI) data downloaded from the US Fish & Wildlife ftp site. Background is 2006 USDA-FSA Aerial Photography.



Avoidance Area - Phase I North					
Scale: AS SHOWN	Drawn by: KZS	Checked by:	Project No.: 5192-000	Date: 09/04/08	Sheet:
Map created by: <b>Houston Engineering, Inc.</b> 6901 E. Fish Lake Rd., Suite 140 Maple Grove, MN 55369 Bus: (763) 493-4522 Fax: (763) 493-5572					





# Avoidance Area Phase I South

- Phase I Project Boundary
- ★ Substation
- Wind Turbines
- Existing 345kv Transmission Line
- Cable Lines Lines
- Access Roads
- Cultural\_Res\_points\_12Mar08
- Cultural\_Res\_buffers\_12Mar08

### Q3 Zones

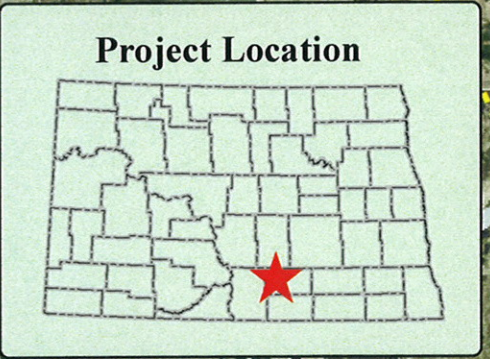
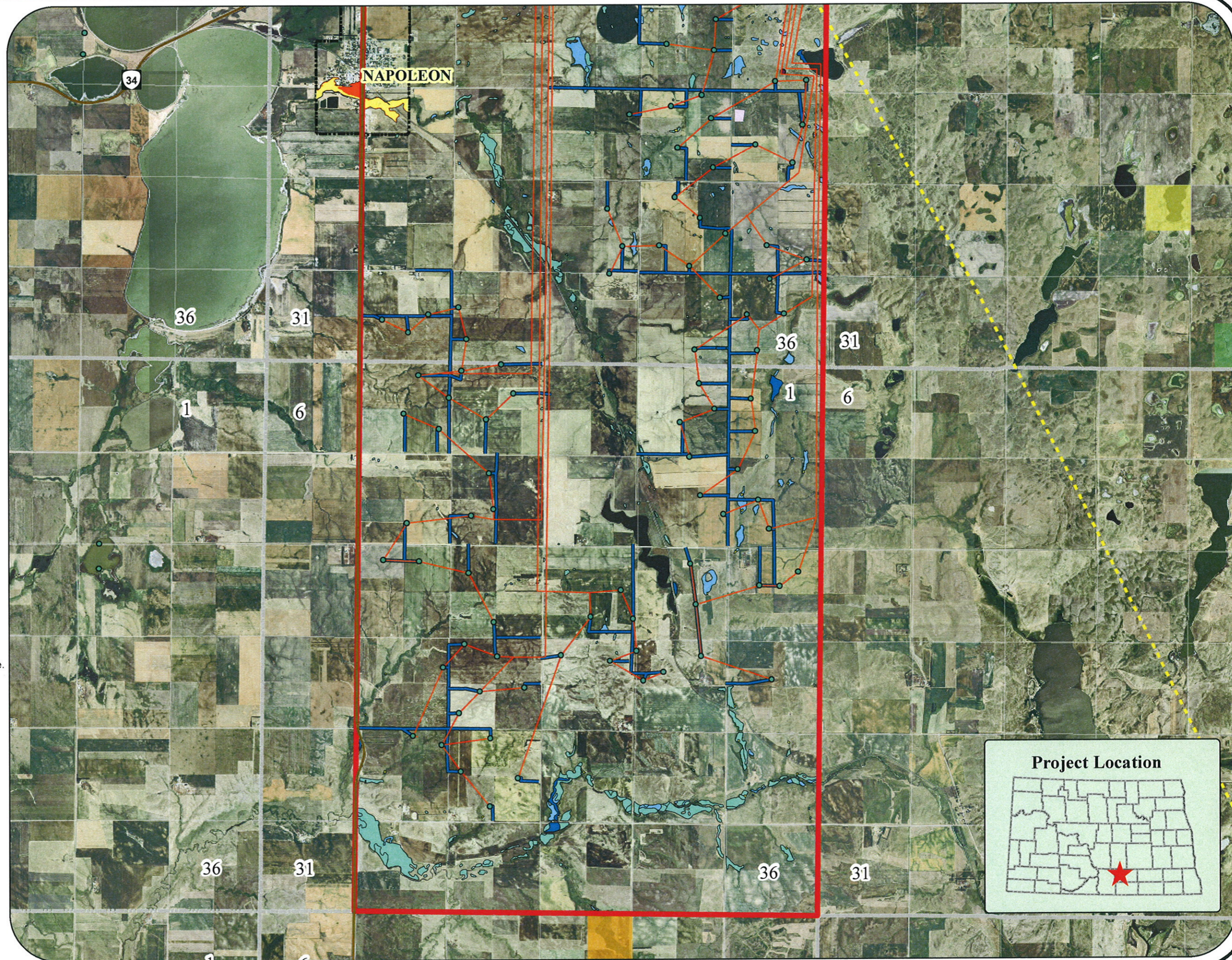
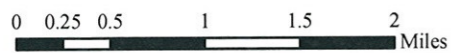
- ZONE**
- AE - Area within 100-year floodplain.
  - X - Area outside of 500-year floodplain.
  - X500 - Area within 500-year floodplain.

### Wetlands (NWI)

- P, PABF
- P, PABFX
- P, PEM/ABF
- P, PEMA
- P, PEMC
- P, PEMF
- P, PFO1A

- Township Line
- Section Line

Data downloaded from the ND GIS Data Hub. National Wetlands Inventory (NWI) data downloaded from the US Fish & Wildlife ftp site. Background is 2006 USDA-FSA Aerial Photography.



Avoidance Area - Phase I South					
Scale: AS SHOWN	Drawn by: KZS	Checked by:	Project No.: 5192-000	Date: 09/04/08	Sheet:
Map created by: <b>Houston Engineering, Inc.</b> 6901 E. Fish Lake Rd., Suite 140 Maple Grove, MN 55369 Bus: (763) 493-4522 Fax: (763) 493-5572					



# Avoidance Area Over All

- Phase I Project Boundary
- ★ Substation
- Existing 345kv Transmission Line
- Wind Turbines
- Cable Lines Lines
- Access Roads
- Cultural\_Res\_points\_12Mar08
- Cultural\_Res\_buffers\_12Mar08

### Q3 Zones

#### ZONE

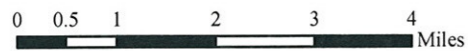
- AE - Area within 100-year floodplain.
- X - Area outside of 500-year floodplain.
- X500 - Area within 500-year floodplain.

#### Wetlands (NWI)

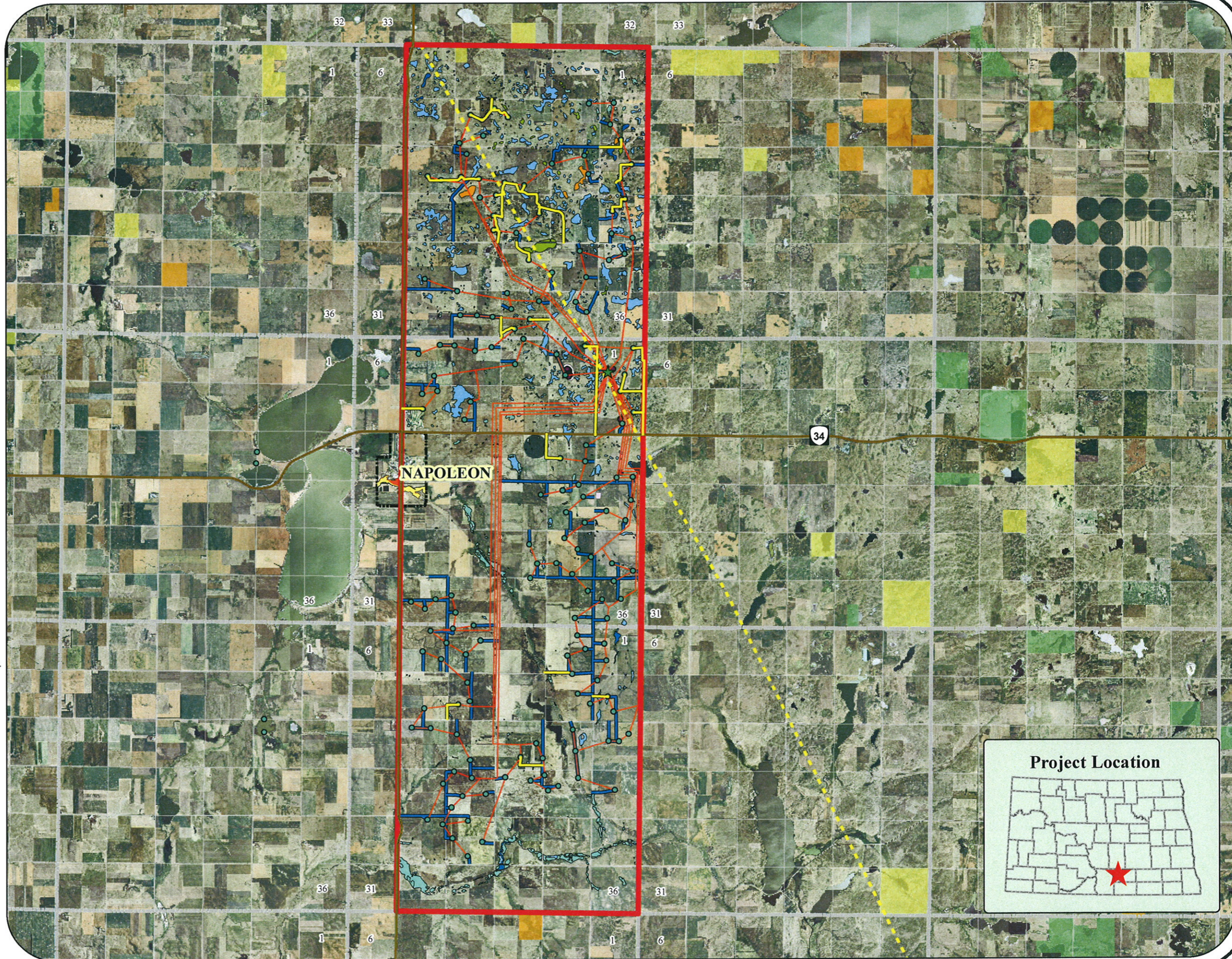
- P, PABF
- P, PABFX
- P, PEM/ABF
- P, PEMA
- P, PEMC
- P, PEMF
- P, PFO1A

- Township Line
- Section Line

Data downloaded from the ND GIS Data Hub. National Wetlands Inventory (NWI) data downloaded from the US Fish & Wildlife ftp site. Background is 2006 USDA-FSA Aerial Photography.



Avoidance Area - Over All					
Scale: AS SHOWN	Drawn by: KZS	Checked by:	Project No.: 5192-000	Date: 09/04/08	Sheet:
Map created by: <b>Houston Engineering, Inc.</b> 6901 E. Fish Lake Rd., Suite 140 Maple Grove, MN 55369 Bus: (763) 493-4522 Fax: (763) 493-5572					





# Exclusion Areas Phase I North

## Prime Farmland Classification

- Farmland of statewide importance
- Prime farmland if drained
- Not prime farmland
- Existing 345kv Transmission Line
- Cable Lines Lines
- Access Roads
- ★ Substation
- Wind Turbines

Data downloaded from the ND GIS Data Hub. SSURGO soil data downloaded from the NRCS Soil Data Mart. Prime farmland, as defined by the U.S. Department of Agriculture, is land that has the best combination of physical and chemical characteristics for producing food, feed, forage, fiber, and oilseed crops and is available for these uses. It could be cultivated land, pastureland, forestland, or other land, but it is not urban or built-up land or water areas. Farmland of statewide importance generally includes areas of soils that nearly meet the requirements for prime farmland and that economically produce high yields of crops when treated and managed according to acceptable farming methods. Some areas may produce as high a yield as prime farmland if conditions are favorable. Background is 2006 USDA-FSA Aerial Photography.

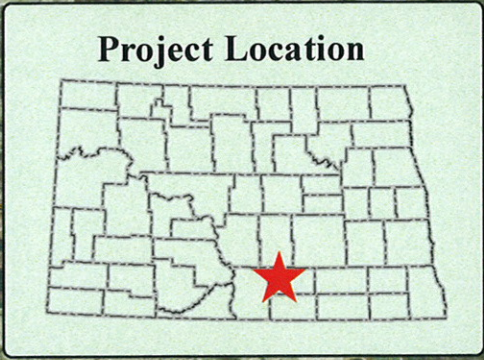
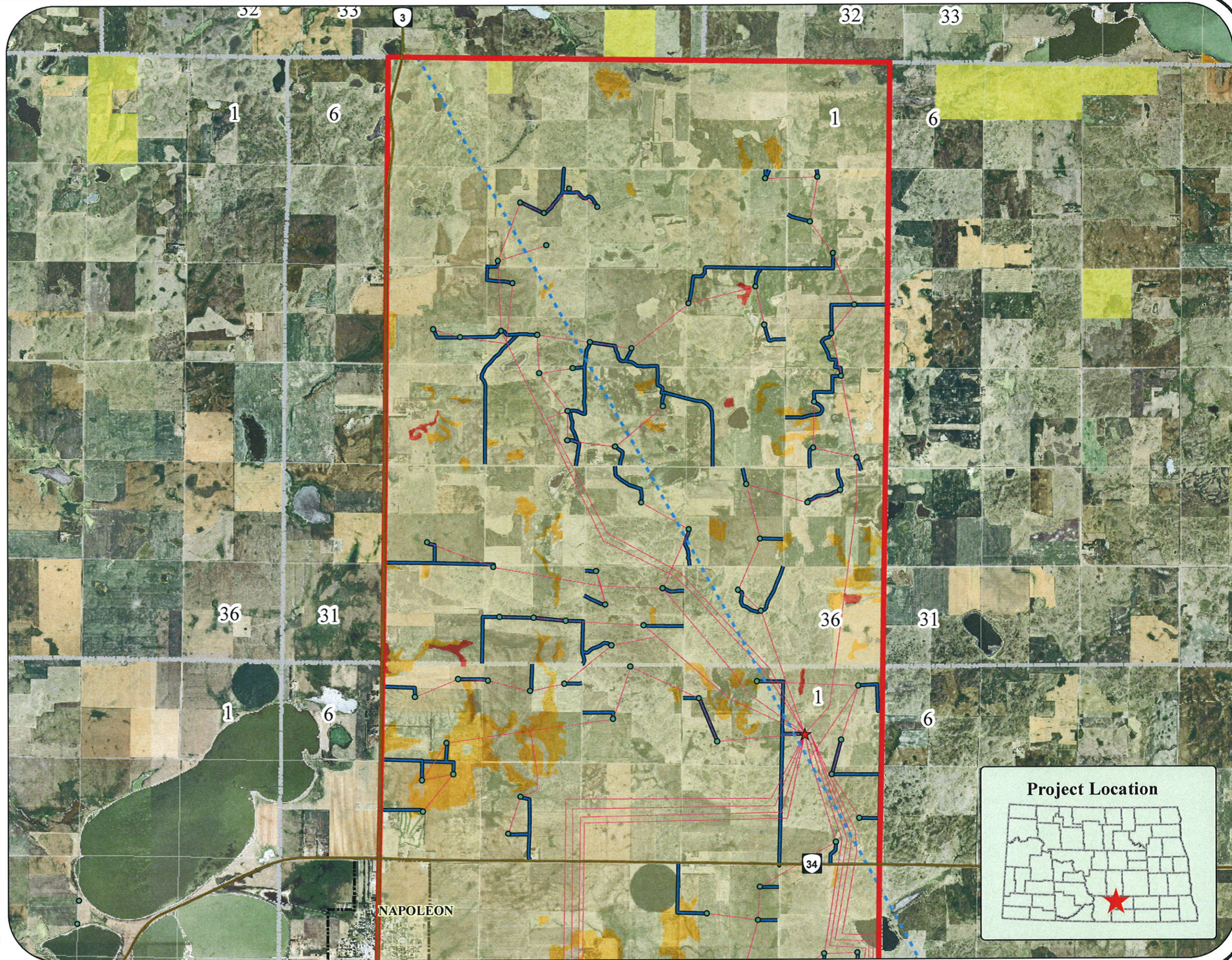


0 0.45 0.9 1.8 Miles

### Exclusion Areas - Phase I North

Scale: AS SHOWN	Drawn by: KZS	Checked by:	Project No.: 5192-000	Date: 09/04/08	Sheet:
--------------------	------------------	-------------	--------------------------	-------------------	--------

Map created by:  
**Houston Engineering, Inc.**  
 6901 E. Fish Lake Rd., Suite 140  
 Maple Grove, MN 55369  
 Bus: (763) 493-4522  
 Fax: (763) 493-5572





# Exclusion Areas Phase I South

## Prime Farmland Classification

- Farmland of statewide importance
- Prime farmland if drained
- Not prime farmland
- Existing 345kv Transmission Line
- Cable Lines Lines
- Access Roads
- Substation
- Wind Turbines

Data downloaded from the ND GIS Data Hub. SSURGO soil data downloaded from the NRCS Soil Data Mart. Prime farmland, as defined by the U.S. Department of Agriculture, is land that has the best combination of physical and chemical characteristics for producing food, feed, forage, fiber, and oilseed crops and is available for these uses. It could be cultivated land, pastureland, forestland, or other land, but it is not urban or built-up land or water areas. Farmland of statewide importance generally includes areas of soils that nearly meet the requirements for prime farmland and that economically produce high yields of crops when treated and managed according to acceptable farming methods. Some areas may produce as high a yield as prime farmland if conditions are favorable. Background is 2006 USDA-FSA Aerial Photography.

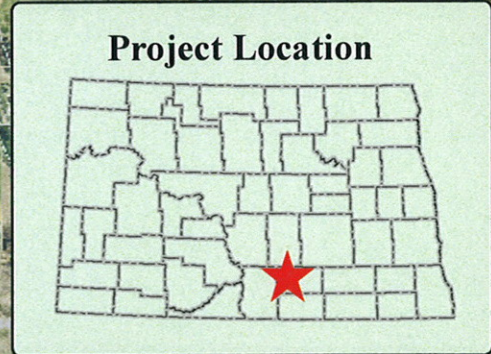
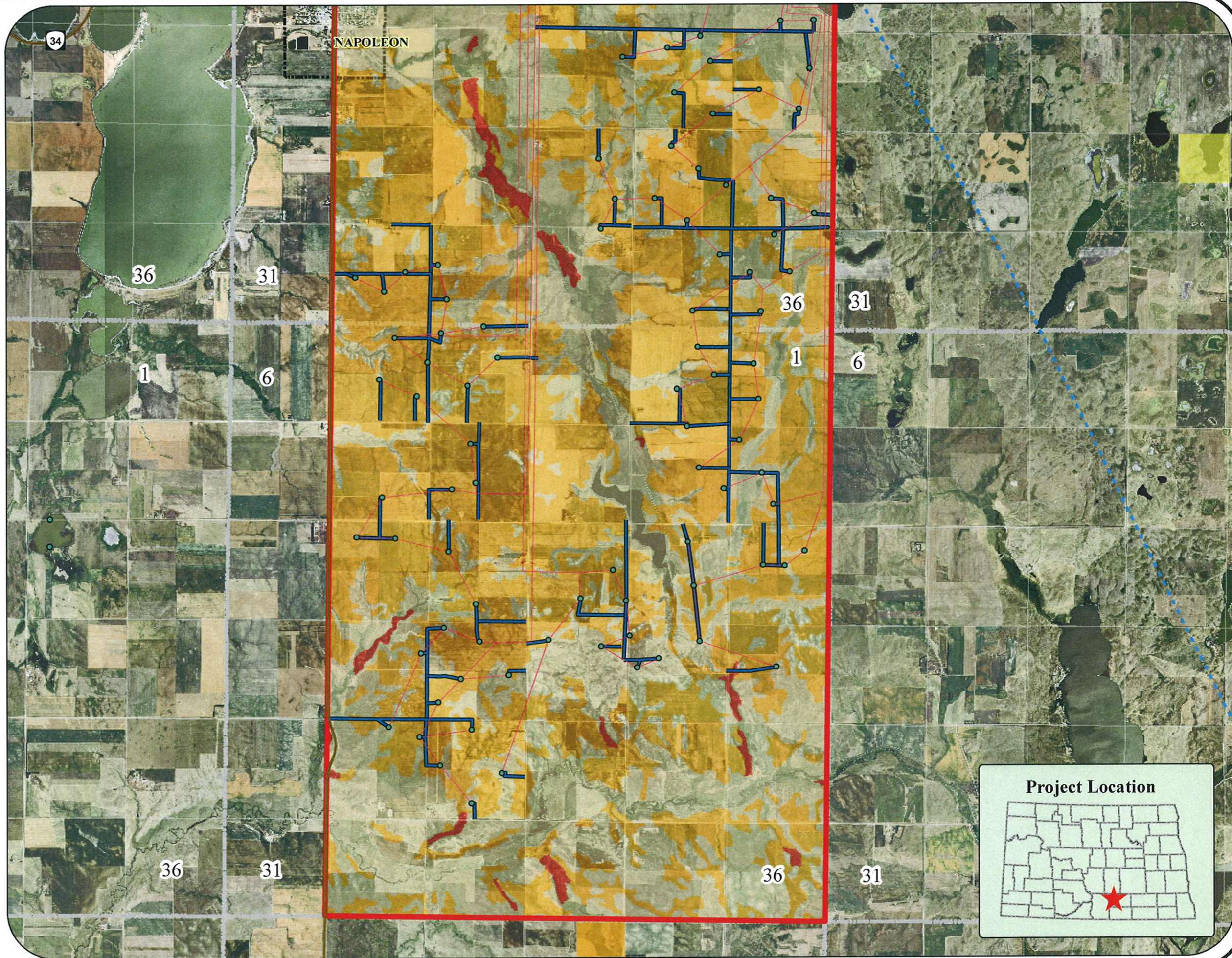


0 0.45 0.9 1.8 Miles

### Exclusion Areas - Phase I South

Scale: AS SHOWN	Drawn by: KZS	Checked by:	Project No.: 5192-000	Date: 09/04/08	Sheet:
--------------------	------------------	-------------	--------------------------	-------------------	--------

Map created by:  
**Houston Engineering, Inc.**  
 6901 E. Fish Lake Rd., Suite 140  
 Maple Grove, MN 55369  
 Bus: (763) 493-4522  
 Fax: (763) 493-5572





# Exclusion Areas Over All

## Prime Farmland Classification

- Farmland of statewide importance
- Prime farmland if drained
- Not prime farmland

- - - - Existing 345kv Transmission Line

— Cable Lines Lines

— Access Roads

★ Substation

● Wind Turbines

## Species of Concern

◆ Animal

★ Plant

Data downloaded from the ND GIS Data Hub. SSURGO soil data downloaded from the NRCS Soil Data Mart. Prime farmland, as defined by the U.S. Department of Agriculture, is land that has the best combination of physical and chemical characteristics for producing food, feed, forage, fiber, and oilseed crops and is available for these uses. It could be cultivated land, pastureland, forestland, or other land, but it is not urban or built-up land or water areas. Farmland of statewide importance generally includes areas of soils that nearly meet the requirements for prime farmland and that economically produce high yields of crops when treated and managed according to acceptable farming methods. Some areas may produce as high a yield as prime farmland if conditions are favorable. Background is 2006 USDA-FSA Aerial Photography.



0 1 2 4 Miles

Exclusion Areas Over All					
Scale: AS SHOWN	Drawn by: KZS	Checked by:	Project No.: 5192-000	Date: 09/04/08	Sheet:

Map created by:  
**Houston Engineering, Inc.**  
 6901 E. Fish Lake Rd., Suite 140  
 Maple Grove, MN 55369  
 Bus: (763) 493-4522  
 Fax: (763) 493-5572

