



January 21, 2009

Norman L. Jones III
Direct Dial: (612) 604-6605
njones@winthrop.com

Mr. Jerry Lein
Executive Director
North Dakota Public Service Commission
600 E. Boulevard, Dept. 408
Bismarck, ND 58505-0480

RE: Just Wind, LLC / Application for Certificate of Site Compatibility – Supplemental Late Filed Exhibits

Dear Mr. Lein:

This letter is written on behalf of our client Just Wind, LLC (“Applicant”) in satisfaction of its obligation to file certain additional exhibits and information requested at the October 21, 2008 PSC hearing on the above application. This supplements our letter dated January 7, 2008 and includes additional requested information and exhibits.

(1) Approval of Cultural Resources Report. Enclosed as Exhibit 6 is a copy of the final Class III Cultural Resources Inventory dated January 15, 2009.

(2) Substation Design. Enclosed as Exhibit 7 is are drawings for the substation which includes, on page 1, a representation of the interconnect. To clarify, there is only one substation planned. A second substation further south, called for in an earlier plan, has been determined not to be necessary.

(3) Turbine locations in relation to residences. Some additional information was requested about the distances of certain turbines to residences and how the residents feel about the locations. Currently there are 4 turbines proposed within 1000 feet of residences: T95, T102, T153 and T156. The distances of these turbines to residences ranges from approximately 825 feet to approximately 940 feet. Given the particular situations of these sites, the applicant believes that it may not be possible to increase the distance to these turbines any more and still be able to keep them on the applicable landowner’s property. Or in some cases, the turbine may have to be eliminated. As a reminder, the proposed distances meet local zoning requirements, acceptable noise requirements and safety requirements. Of course, the applicant will comply with whatever minimum residence distance the PSC mandates above these amounts, but wanted to take this opportunity to point out that that may end up defeating the wishes of the residents themselves. The applicant believes that the residents concerned have been informed of, and agree with, the proposed locations, primarily because of a desire to keep the turbines located on their property. The applicant would be willing to obtain written consents or other

Mr. Jerry Lein
January 21, 2009
Page 2

communications from these residents in whatever form the PSC feels necessary to demonstrate resident approval of these locations.

Thank you for your consideration of this material and for the PSC's kind consideration of this application. Please let us know if you will require any further information.

Very truly yours,

WINTHROP & WEINSTINE, P.A.

A handwritten signature in black ink, appearing to read "Norman L. Jones III". The signature is stylized with several horizontal strokes and a final flourish.

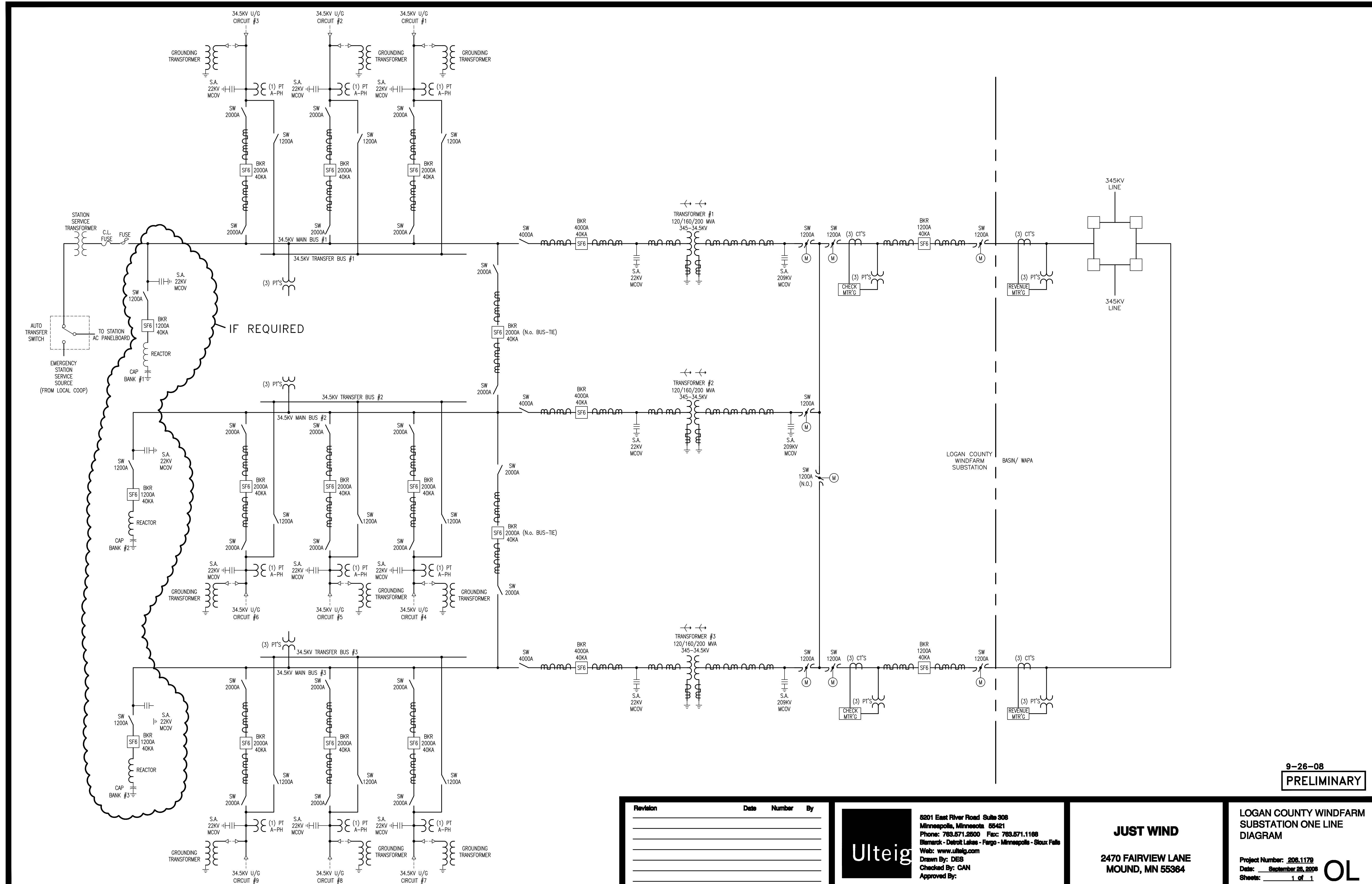
Norman L. Jones III

Enclosures

cc: Allen C. Hoberg
Annette Bendish
Jeff Metzger

EXHIBIT 6

Final Class III Cultural Resources Inventory



9-26-08
PRELIMINARY

Revision	Date	Number	By

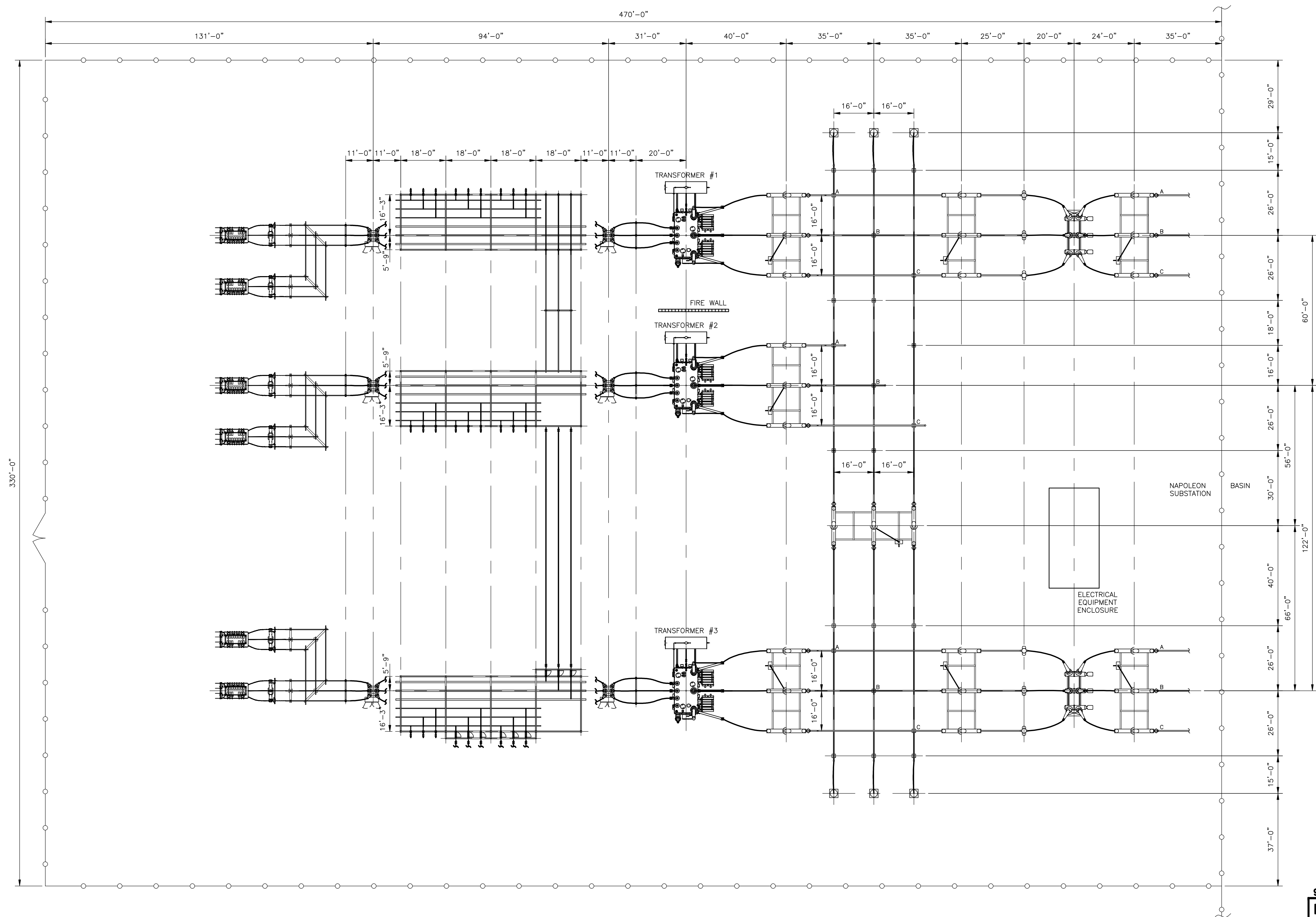
Ulteig
 6201 East River Road Suite 306
 Minneapolis, Minnesota 55421
 Phone: 763.571.2500 Fax: 763.571.1188
 Blamark - Detroit Lakes - Fargo - Minneapolis - Sioux Falls
 Web: www.ulteig.com
 Drawn By: DES
 Checked By: CAN
 Approved By:

JUST WIND
 2470 FAIRVIEW LANE
 MOUND, MN 55364

LOGAN COUNTY WINDFARM
 SUBSTATION ONE LINE
 DIAGRAM
 Project Number: 206.1179
 Date: September 26, 2008
 Sheets: 1 of 1

OL

PRESUMED
 SCALE: 1"=20'-0"
 0 5' 10' 20'



9-26-08
PRELIMINARY

Revision	Date	Number	By

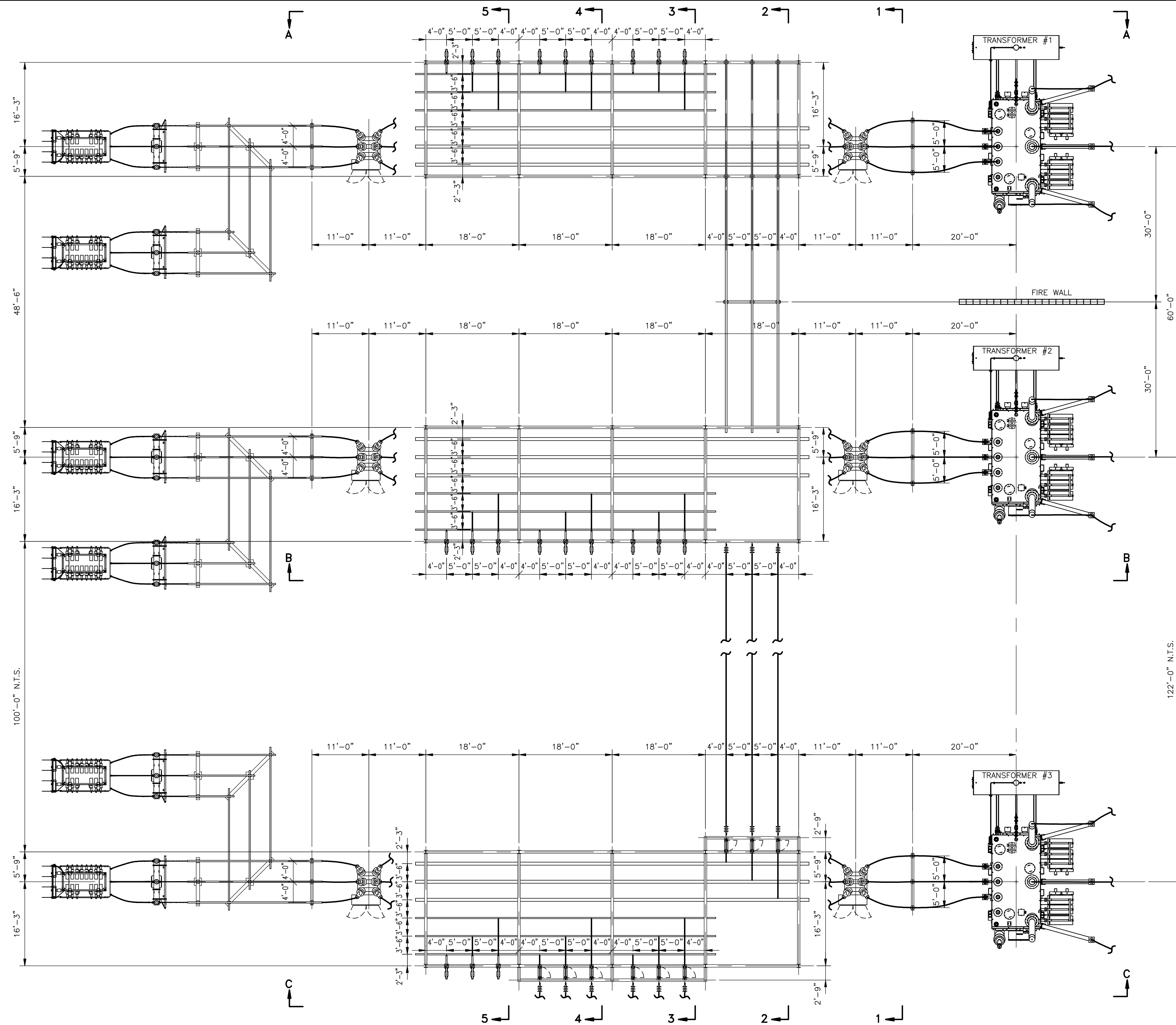
Ulteig
 8201 East River Road Suite 306
 Minneapolis, Minnesota 55421
 Phone: 763.571.2500 Fax: 763.571.1168
 Blamark - Detroit Lakes - Fargo - Minneapolis - Sioux Falls
 Web: www.ulteig.com
 Drawn By: DES
 Checked By: CAN
 Approved By:

JUST WIND
 2470 FAIRVIEW LANE
 MOUND, MN 55364

LOGAN COUNTY WINDFARM
 345/34.5KV ELECTRICAL
 LAYOUT
 PLAN
 Project Number: 208.1179
 Date: September 26, 2008
 Sheets: 1 of 2

EQ

PRESUMED
 SCALE: 3/32"=1'-0"
 0 2' 4' 6' 8' 10'



9-26-08
 PRELIMINARY

Revision	Date	Number	By

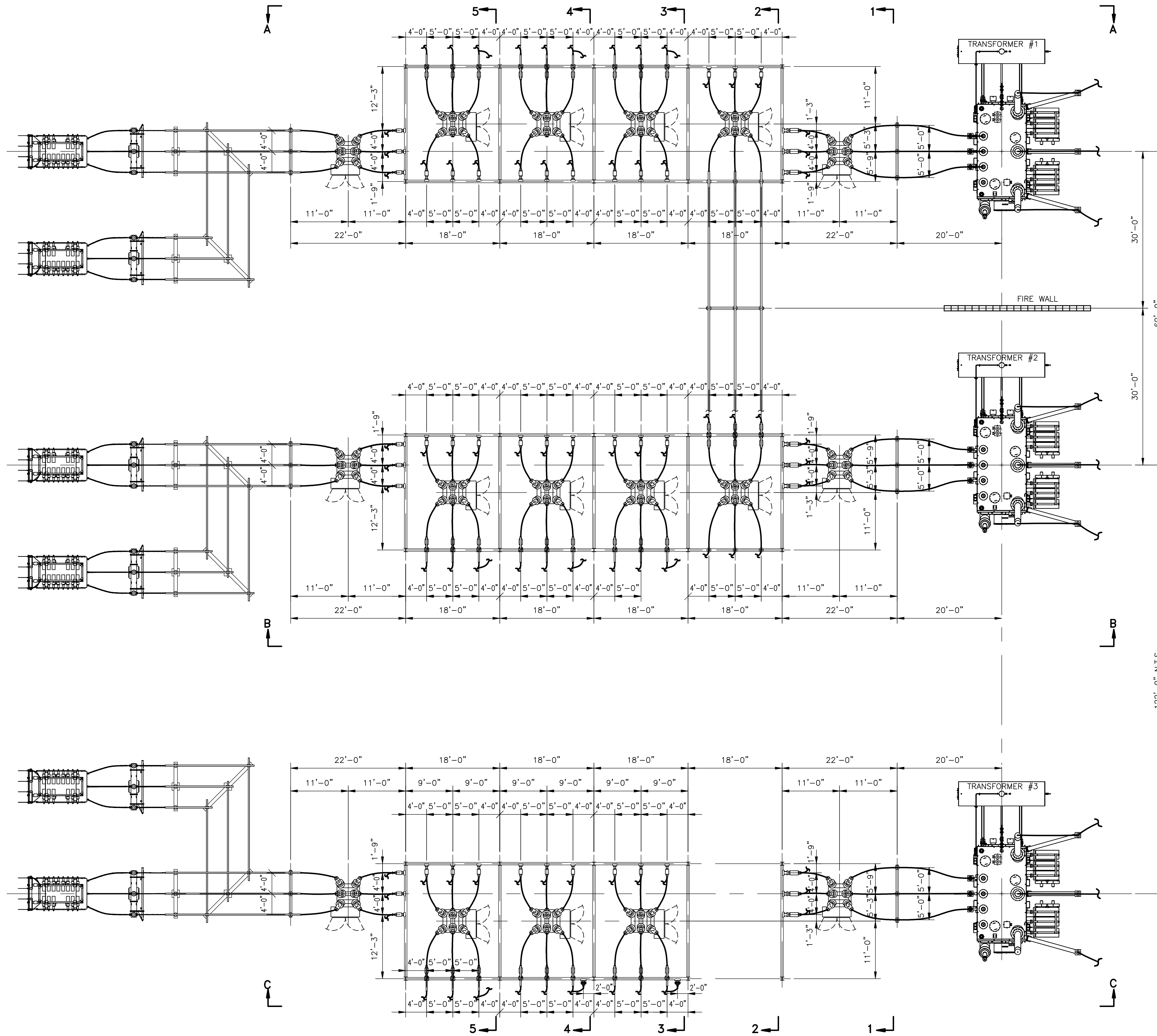
Ulteig
 6201 East River Road Suite 306
 Minneapolis, Minnesota 55421
 Phone: 763.571.2500 Fax: 763.571.1166
 Blamark - Detroit Lakes - Fargo - Minneapolis - St. Paul
 Web: www.ulteig.com
 Drawn By: DES
 Checked By: CAN
 Approved By:

JUST WIND
 2470 FAIRVIEW LANE
 MOUND, MN 55364

LOGAN COUNTY WINDFARM
 34.5KV ELECTRICAL LAYOUT
 PLAN
 Project Number: 206.1179
 Date: September 26, 2008
 Sheets: 2 of 2

EQ

PRESUMED
 SCALE: 3/32"=1'-0"
 0 2' 4' 6' 8' 10'



9-26-08
 PRELIMINARY

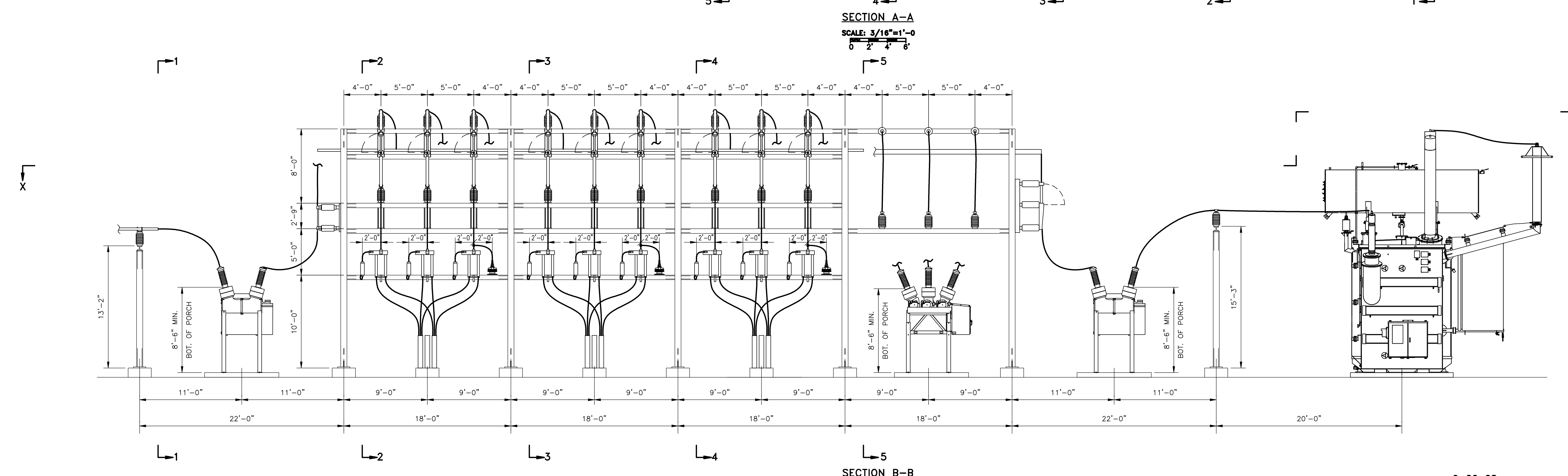
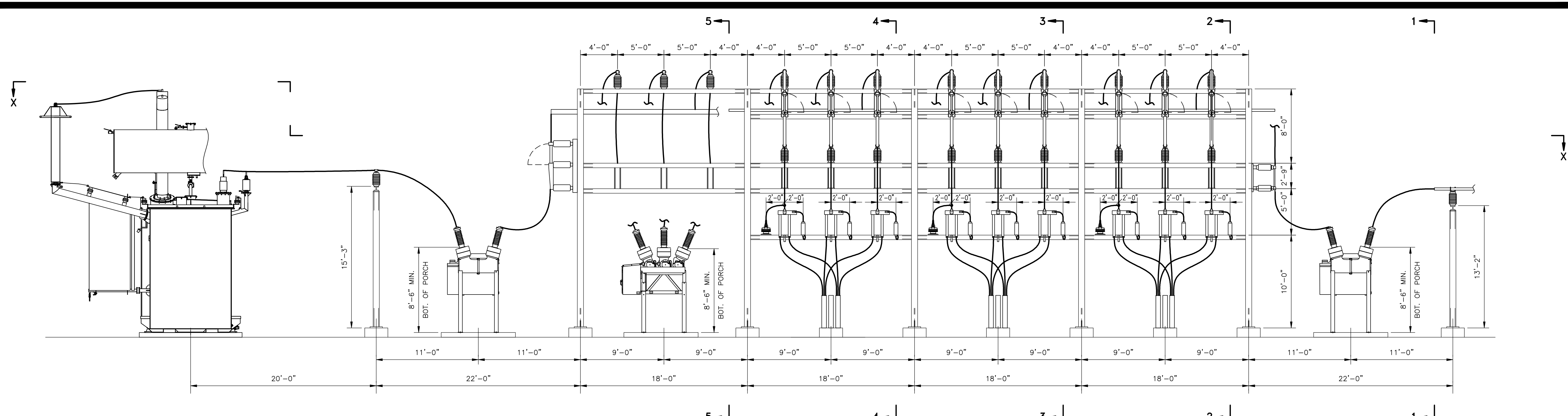
Revision	Date	Number	By

Ulteig
 6201 East River Road Suite 306
 Minneapolis, Minnesota 55421
 Phone: 763.571.2500 Fax: 763.571.1166
 Blamark - Detroit Lakes - Fargo - Minneapolis - Sioux Falls
 Web: www.ulteig.com
 Drawn By: DES
 Checked By: CAN
 Approved By:

JUST WIND
 2470 FAIRVIEW LANE
 MOUND, MN 55364

LOGAN COUNTY WINDFARM
 34.5KV ELECTRICAL LAYOUT
 SECTIONAL X-X
 Project Number: 206.1179
 Date: September 26, 2008
 Sheets: 3 of 7

EQ



9-26-08
PRELIMINARY

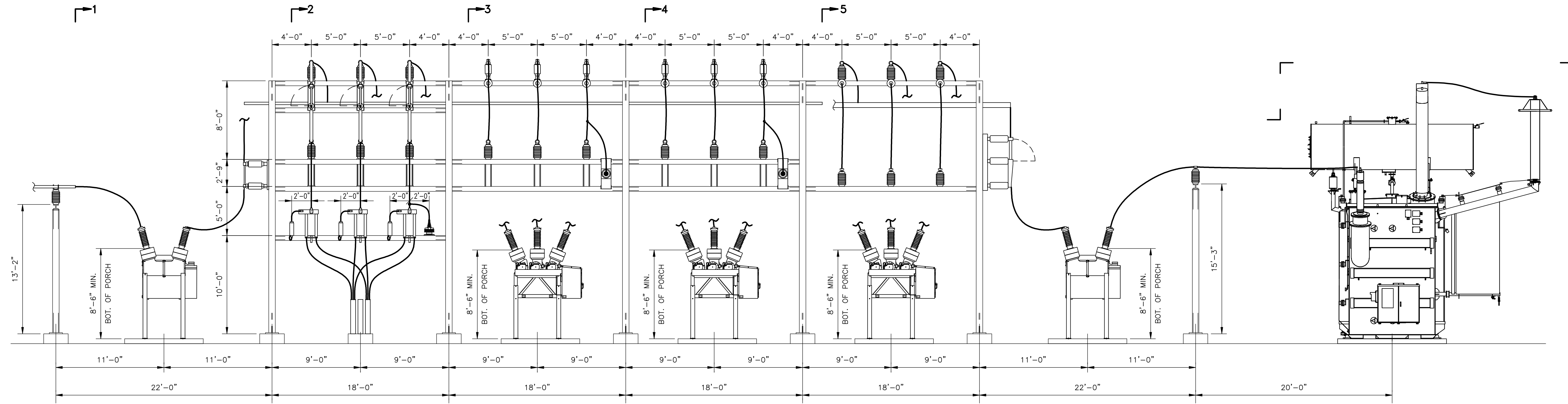
Revision	Date	Number	By

Ulteig
 6201 East River Road Suite 306
 Minneapolis, Minnesota 55421
 Phone: 763.571.2500 Fax: 763.571.1168
 Blamark - Detroit Lakes - Fargo - Minneapolis - Sioux Falls
 Web: www.ulteig.com
 Drawn By: DES
 Checked By: CAN
 Approved By:

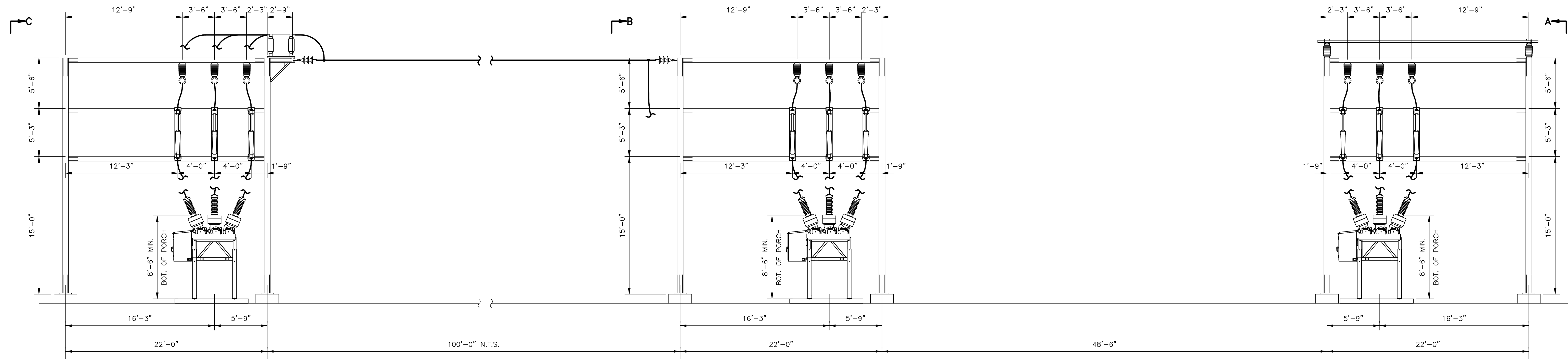
JUST WIND
 2470 FAIRVIEW LANE
 MOUND, MN 55364

LOGAN COUNTY WINDFARM
34.5KV ELECTRICAL LAYOUT
SECTION A-A & B-B
 Project Number: 206.1179
 Date: September 26, 2008
 Sheets: 4 of 7

EQ



SECTION C-C
SCALE: 3/16"=1'-0"
0 2' 4' 8'



SECTION 1-1
SCALE: 3/16"=1'-0"
0 2' 4' 8'

9-26-08
PRELIMINARY

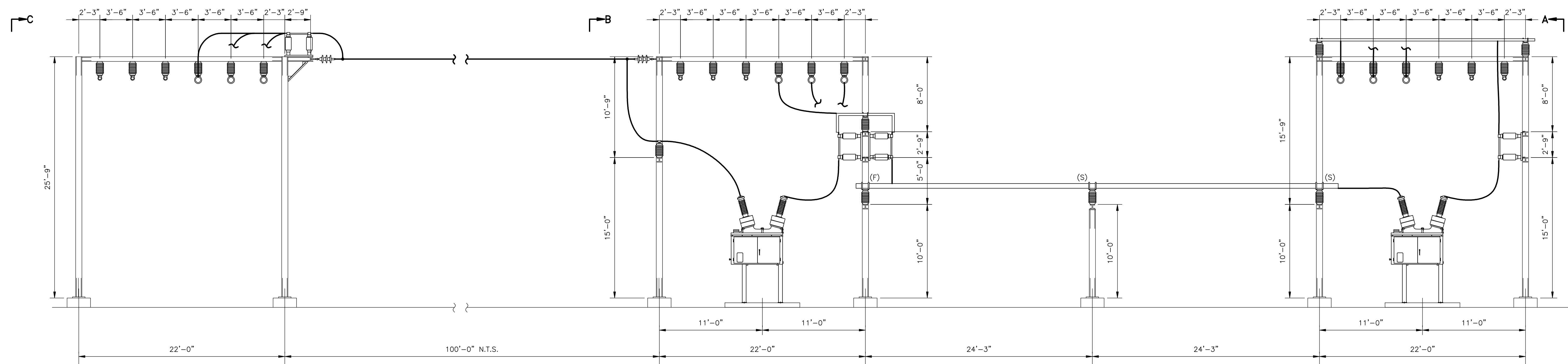
Revision	Date	Number	By

Ulteig
6201 East River Road Suite 306
Minneapolis, Minnesota 55421
Phone: 763.571.2500 Fax: 763.571.1168
Blamark - Detroit Lakes - Fargo - Minneapolis - St. Cloud
Web: www.ulteig.com
Drawn By: DES
Checked By: CAN
Approved By:

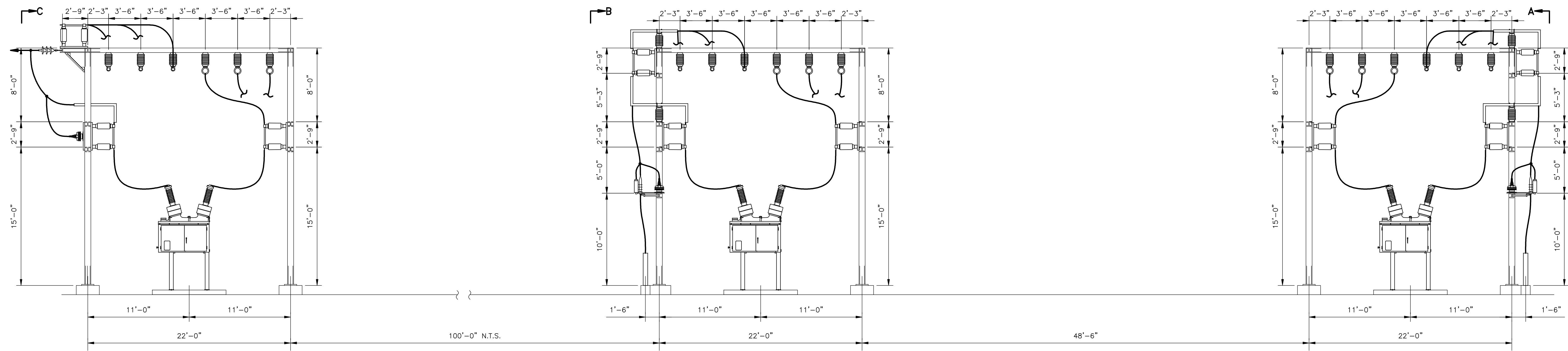
JUST WIND
2470 FAIRVIEW LANE
MOUND, MN 55364

LOGAN COUNTY WINDFARM
34.5KV ELECTRICAL LAYOUT
SECTION C-C & 1-1
Project Number: 208.1179
Date: September 26, 2008
Sheets: 5 of 7

EQ



SECTION 2-2
SCALE: 3/16"=1'-0"
 0 2' 4' 6'



SECTION 3-3
SECTION 4-4
SCALE: 3/16"=1'-0"
 0 2' 4' 6'

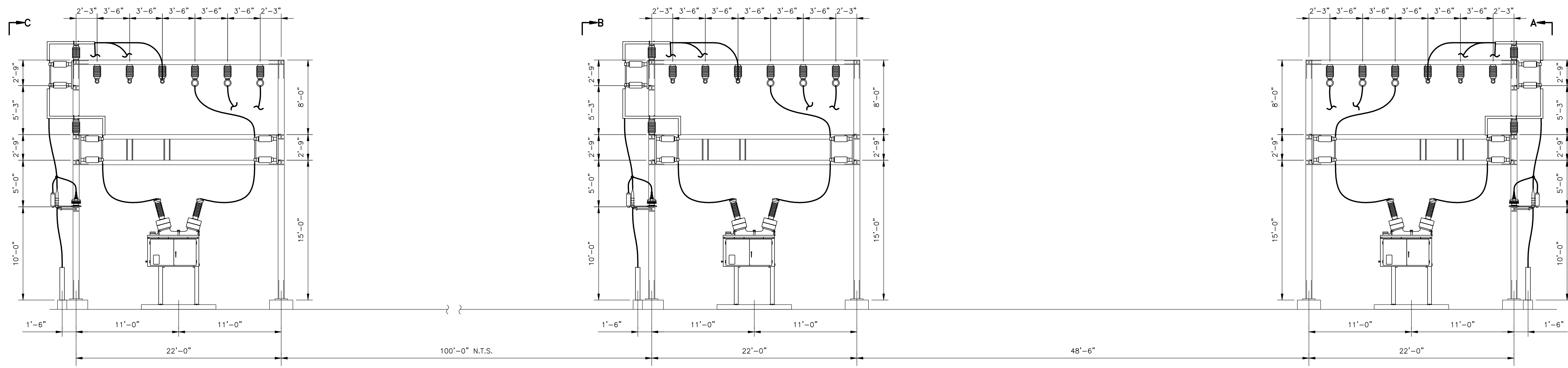
9-26-08
PRELIMINARY

Revision	Date	Number	By

Ulteig
 6201 East River Road Suite 306
 Minneapolis, Minnesota 55421
 Phone: 763.571.2500 Fax: 763.571.1168
 Blamark - Detroit Lakes - Fargo - Minneapolis - Sioux Falls
 Web: www.ulteig.com
 Drawn By: DES
 Checked By: CAN
 Approved By:

JUST WIND
 2470 FAIRVIEW LANE
 MOUND, MN 55364

LOGAN COUNTY WINDFARM
34.5KV ELECTRICAL LAYOUT
SECTION 2-2, 3-3 & 4-4
 Project Number: 206.1179
 Date: September 26, 2008
 Sheets: 6 of 7 **EQ**



SECTION 5-5
 SCALE: 3/16"=1'-0"
 0 2' 4' 6'

9-26-08
PRELIMINARY

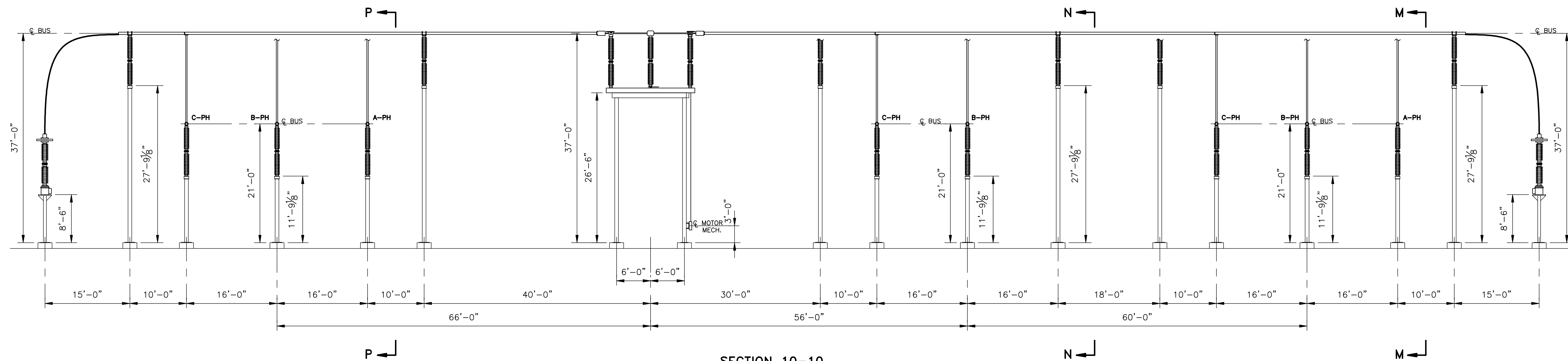
Revision	Date	Number	By

Ulteig
 6201 East River Road Suite 306
 Minneapolis, Minnesota 55421
 Phone: 763.571.2500 Fax: 763.571.1168
 Blamark - Detroit Lakes - Fargo - Minneapolis - StouxFalls
 Web: www.ulteig.com
 Drawn By: DES
 Checked By: CAN
 Approved By:

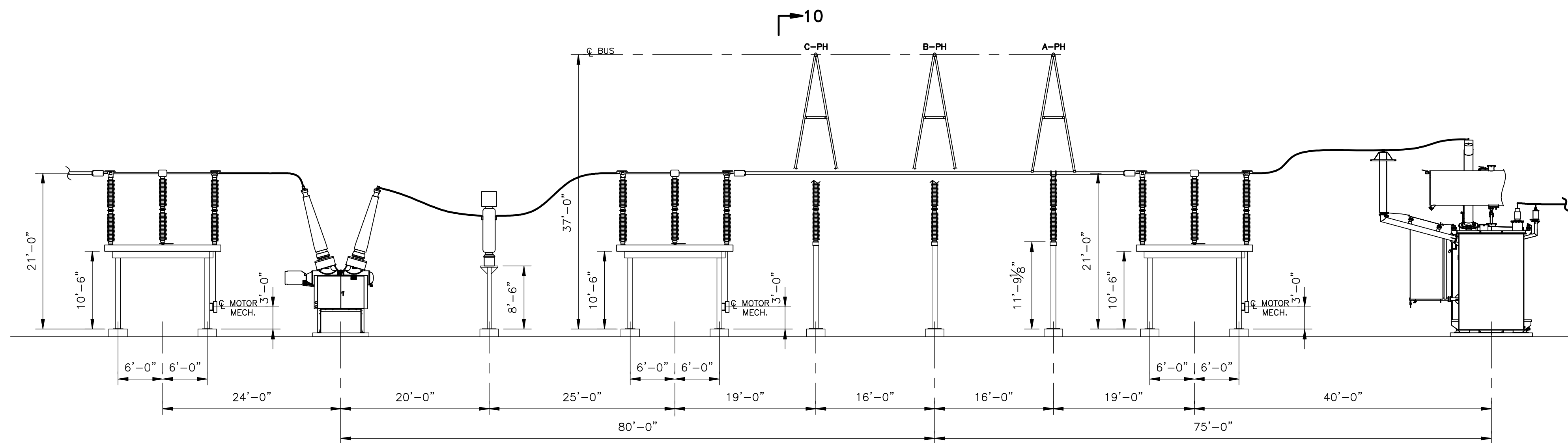
JUST WIND
 2470 FAIRVIEW LANE
 MOUND, MN 55364

LOGAN COUNTY WINDFARM
34.5KV ELECTRICAL LAYOUT
SECTION 5-5
 Project Number: 206.1179
 Date: September 26, 2008
 Sheets: 7 of ?

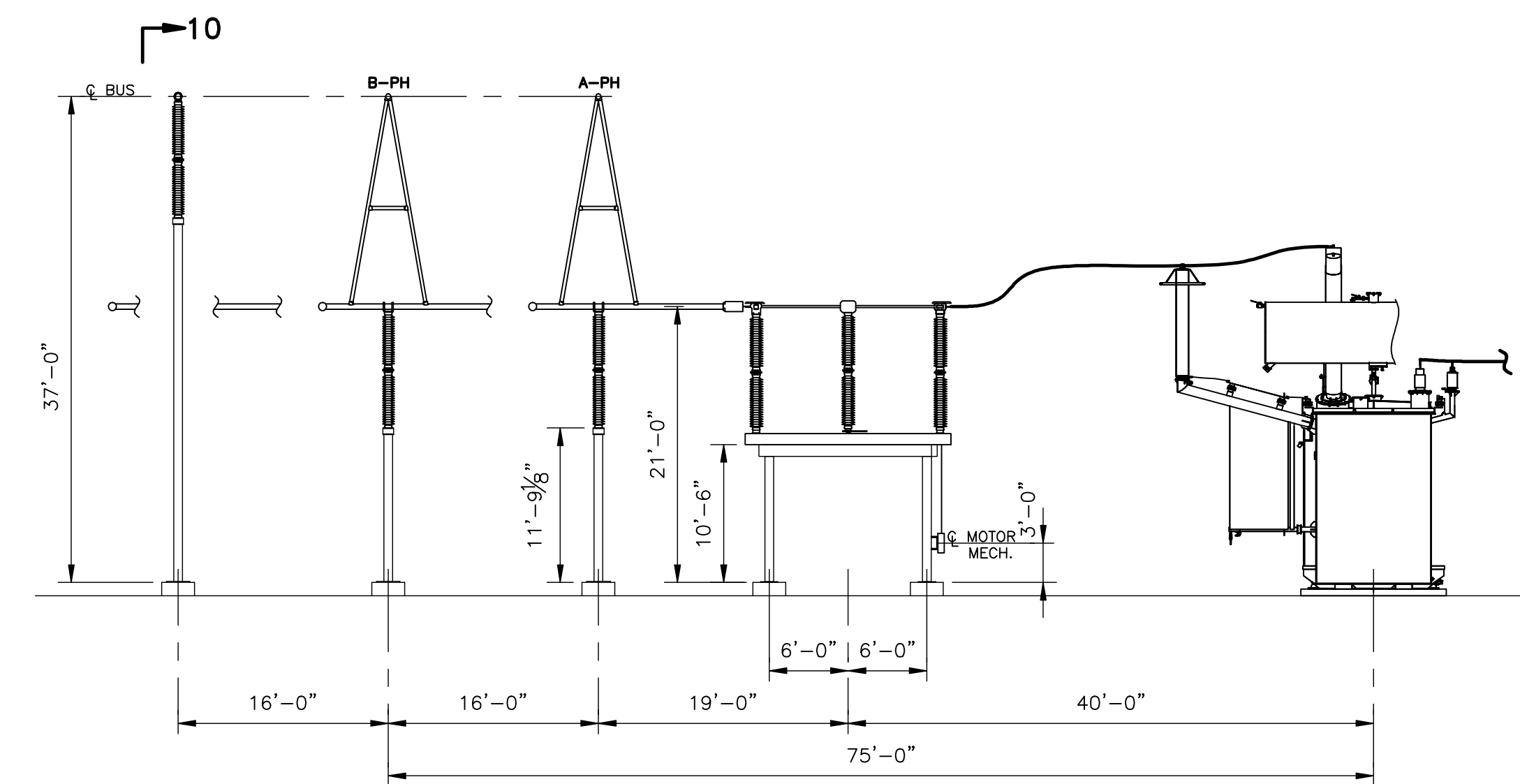
EQ



SECTION 10-10
 SCALE: 3/32"=1'-0"
 0 2' 4' 6' 8' 10'



SECTION M-M
SECTION P-P
 SCALE: 3/32"=1'-0"
 0 2' 4' 6' 8' 10'



SECTION N-N
 SCALE: 3/32"=1'-0"
 0 2' 4' 6' 8' 10'

9-26-08
PRELIMINARY

Revision	Date	Number	By

Ulteig
 5201 East River Road Suite 308
 Minneapolis, Minnesota 55421
 Phone: 763.571.2500 Fax: 763.571.1168
 Bemark - Detroit Lakes - Fargo - Minneapolis - St. Paul
 Web: www.ulteig.com
 Drawn By: DES
 Checked By: CAN
 Approved By:

JUST WIND
 2470 FAIRVIEW LANE
 MOUND, MN 55364

LOGAN COUNTY WINDFARM
345KV ELECTRICAL LAYOUT
SECTION 10-10, M-M, N-N
& P-P
 Project Number: 208.1179
 Date: September 26, 2008
 Sheets: 9 of ?

EQ