



From the desk
of
**Napoleon Public
School Superintendent**
Mr. ElRoy Burkle

New Year! I hope that ev-
had a relaxing and enjoy-
with family and friends
the holidays.

atulations to the boy's bas-
team on their third place
at the Linton tournament
holidays. Best wishes for
ed success. As one reviews
January and February calen-
ter activities are in full
Please take the time to sup-
r students in their various
s and continue to practice
portsmanship. Thanks in

glad that the first major
hit our area occurred dur-
Christmas break, for ob-
personal reasons of course.
er, the storm does provide
several reminders about
Please make sure that the
has been notified of all
ome arrangements. Also,
re in place to fully imple-
the Global Connect Alert
and parents are reminded
ide the school with cur-
ne numbers and email ad-
Attempts will be made to
weather related school an-
nouncements to the television and
ations listed in the student
book in a timely manner.

ief tour of the county roads
storm indicated the same
s in past years; snow drifts
w areas and unmowed ar-
ffits along sheltered areas
insteads. Parents are asked
nue the practice of clean-
farm yards and also inform
ty of any areas that need
lowed. Students must be
dressed for weather con-
when riding buses (regular
d/or extracurricular). Safe-
be the first priority, just as
past.

s can apply for free and
meals at anytime during
ol year. This federal pro-
primary goal is to assist
who qualify financially.
re students this program
however, the more funds

our school district will be eligible
to receive in other federal program
areas such as Title I and other Title
Programs. Please contact this of-
fice with any questions regarding
this program.

Miss Melissa Kary resigned as
K-12 music/band instructor ef-
fective December 31, 2009 due
to health reasons. I would like to
thank her for her brief time at Na-
poleon and wish her all the best.

Filling the K-12 music/band po-
sition was, shall I say, very lucky.
Miss Kristen Kuipers, who taught
at Napoleon several years ago,
agreed to return for the duration
of this school year. Thank you and
welcome aboard!

The 2008-09 School District
Profile is now available at the fol-
lowing website www.dpi.state.nd.us/dpi/reports/Profile/index.shtm. Information includes state-
wide school performance data and
statewide performance, in addition
to a school district's assessment,
demographics, plus other educa-
tional information. Please contact
this office if you would like a copy
sent to your home.

Until next time, take care.
Mr. ElRoy Burkle

Global Connect Activated At NPS

Global Connect informed the
Napoleon Public School on Janu-
ary 7, 2010 that their alert system
was operational and effective the
afternoon of January 7th.

A pre-recorded message was
sent to all parents and staff us-
ing the current phone numbers on
file. If any parent did not receive
this message, they are asked to
contact the school to update their
file. "This is a great system," Mr.
Burkle commented. "With the
click of a couple of keys, messag-
es can be sent to every parent and
staff member."

STATE OF NORTH DAKOTA
PUBLIC SERVICE COMMISSION
Just Wind - Wind Farm
Development
Wind Farm - Logan County
Siting Application
Case No. PU-07-54
**NOTICE OF REQUEST TO
AMEND CERTIFICATE AND
ORDER
AND NOTICE OF HEARING
December 10, 2009**

On April 29, 2009, the Commission
issued Findings of Fact, Conclusions
of Law and Order issuing Certificate
of Site Compatibility No. 11 to Just
Wind - Wind Farm Development
(Just Wind). The Certificate
authorized construction of all but
six proposed wind turbines in a
wind farm to be constructed in
Logan County, North Dakota. The
Commission was concerned with
the close proximity of those six
turbines to occupied residences
and found that more information
was needed before authorizing
those six turbine locations. On
November 10, 2009, Just Wind filed
a letter requesting reconsideration
of the six turbine locations.

A Public Hearing on reconsidering
the six turbine locations is
scheduled to begin January 26,
2010 at 11:00 a.m. CST in the
Logan County Courthouse, 301
Broadway, Napoleon, ND 58561.
The issues to be considered are:

1. Whether the Commission should
reconsider its April 29, 2009
Findings of Fact, Conclusions of
Law and Order.
2. Will the location, construction,
and operation of the proposed
facilities produce minimal adverse
effects on the environment and
upon the welfare of the citizens of
North Dakota?
3. Are the proposed facilities
compatible with the environmental
preservation and the efficient use of
resources?
4. Will the proposed facility
locations minimize adverse
human and environmental impact
while ensuring continuing system
reliability and integrity and ensuring
that energy needs are met and
fulfilled in an orderly and timely
fashion?

For more information contact the
Public Service Commission, State
Capitol, Bismarck, North Dakota
58505, 701-328-2400; or Relay
North Dakota 1-800-366-6888 TTY.
If you require any auxiliary aids or
services, such as readers, signers,
or Braille materials please notify
Daryl Nitschke, Executive Director,
at least 24 hours in advance.
PUBLIC SERVICE COMMISSION
Tony Clark, Commissioner
Kevin Cramer, Chairman
Brian P. Kalk, Commissioner

12-16-09
1-13-10

Worship At The Church Of Your Choice

St. Francis de Sales
Steele
Father Jerome Hunkler

SUNDAY-
9:00 a.m. 1st, 3rd, & 5th
11:00 a.m. 2nd & 4th

St. Paul's Church
Tappen

SATURDAY-
5:00 p.m. 1st, 4th, & 5th

SUNDAY-
9:00 a.m. 2nd
11:00 a.m. 3rd

St. Mary's Church
Medina

SATURDAY-
5:00 p.m. 2nd & 3rd

SUNDAY-
9:00 a.m. 4th
11:00 a.m. 1st & 5th

St. Philip Neri Catholic Church
Napoleon

Rev. Ross Laframboise
FRIDAY-Adoration Day
SATURDAY-
5:00 p.m. Mass

SUNDAY-
10:00 a.m. Mass

Napoleon Baptist Church
Pastor Bernie Jasken

SUNDAY-
11:00 a.m. morning Worship

St. Matthew's Lutheran Church
Rev. Thomas Marcis &
Rev. Douglas Berglin
Napoleon

SUNDAY-
2:00 p.m.

Seventh Day Adventist
Pastor Mathew Miller

SATURDAY-
9:30 a.m. Bible Study
11:00 a.m. Worship Service
combined with Lehr

Ebenezer United Methodist
Church

Rev. Darwin Kopfmann
Streeter
9:45 a.m. Sunday School
11:15 a.m. Worship

Medina
10:00 a.m. Worship
11:00 a.m. Sunday school

Tappen
8:45 a.m. Worship

10:00 a.m. Sunday school
St. Luke Lutheran
United Church of Christ
Streeter

Pastor Chris Hogstad
SUNDAY-
11:00 a.m. Worship Service

Nazareth Congregational
Fredonia

Pastor Bernie Jasken
SUNDAY-
9:00 a.m. Worship Service

Zion United Methodist Church
Pastor Marty Toepke-Floyd
Lehr

SUNDAY-
8:45 a.m. Worship
9:45 a.m. Sunday School

Salem United Methodist
Church

Pastor Marty Toepke-Floyd
Napoleon

SUNDAY-
10:30 a.m. Sunday School at
Trinity Lutheran Church
11:15 a.m. Worship

Trinity Lutheran Parish
Pastor Richard Hagestuen
Kintyre:

SUNDAY, Jan. 17-
10:00 a.m. Sunday school
11:00 a.m. Worship

Napoleon:
Wed., Jan. 13, 6:00 p.m. Con-
firmation class, 6:45 p.m. Pre-con-
firmation class

SUNDAY, Jan. 17-
9:30 a.m. Worship
10:30 a.m. Sunday school

Full Gospel Assembly
Napoleon

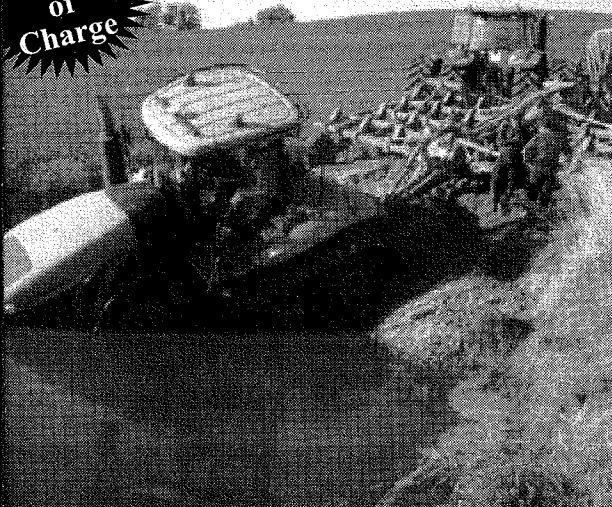
SUNDAY-
10:30 a.m. Worship Service

First United Church of Christ
Gackle

SUNDAY-
9:30 a.m. Worship Service

FARM SAFETY MEETING

Free
of
Charge



Wed., Jan. 20 • Starting at 11:30
The Downtowner - Napoleon, ND
Noon Lunch • Limited to First 60 • Must RSVP
Receive 5% Discount on Farm Insurance Up to a
\$250 Limit Good For 3 Years
Sponsored by
Weigel
754-2665 or
Free (877) 354-2665
Farmers Union
INSURANCE

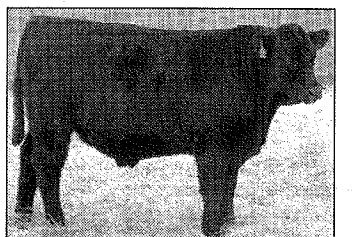
Weigel Angus Ranch Open House

New Sale
Date

BULL SALE

Wed., Jan. 27, 2010

Starting at 2:00



Bulls Like These Sell!

Lunch Served

Stop by anytime to view
the bulls prior to sale day

We are located 6 miles west of Napoleon on
Hwy. #34, 3 miles south, 1/2 mile east.

If you have any questions or need a catalog

Call Bob or Jodi @
(701) 332-6615 or 321-1515

or email: bnjweigel@yahoo.com

www.weigelangusranch.com

Offering Includes:

38-Outstanding Yearling Bulls

4-2-Year Olds

20-Open Replacement Heifers

Reference Sires:

Connealy Forward

Connealy All Around

Image Maker

BT Crossover

In Focus And Others