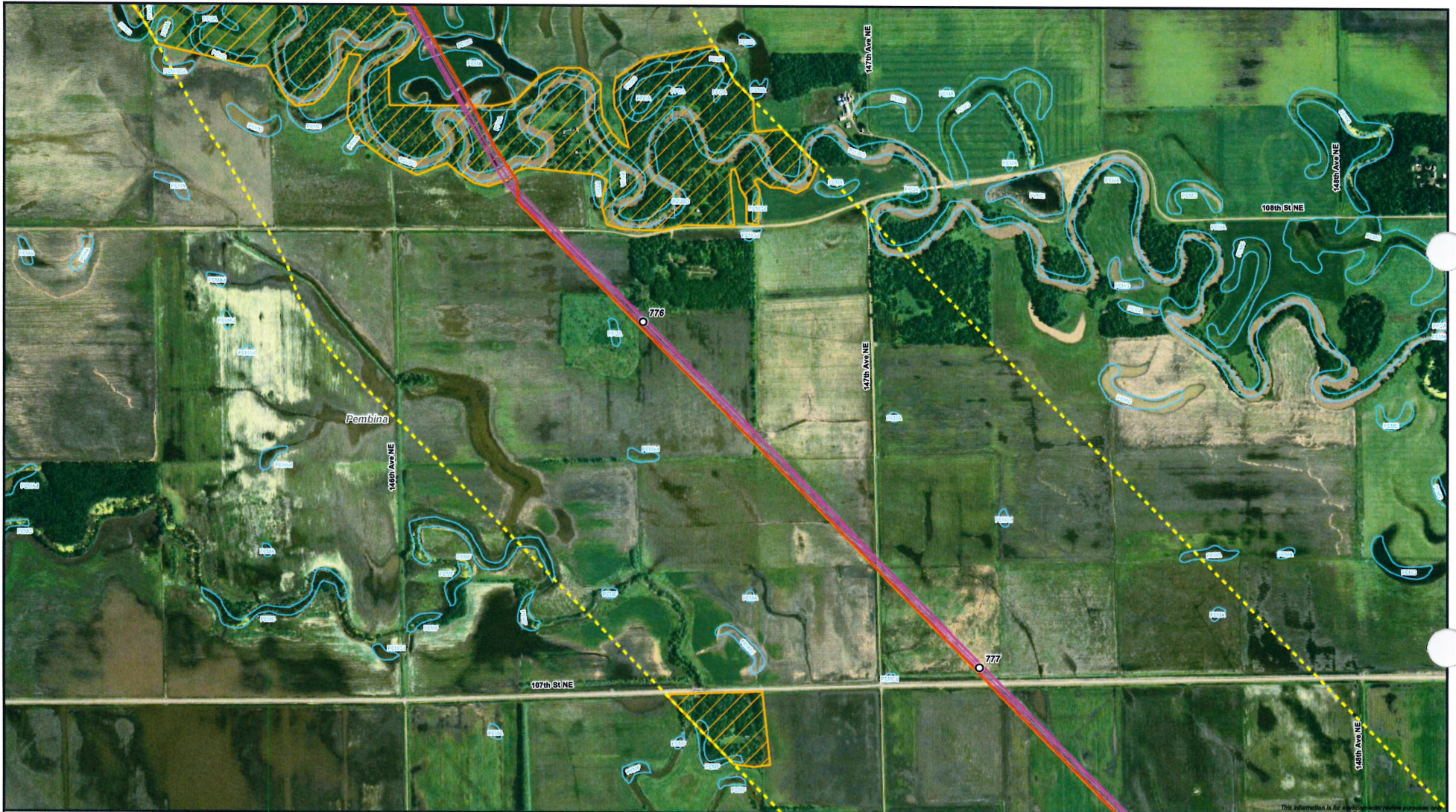


- Milepost
- Proposed LSr Oil Pipeline
- Existing Enbridge Lines
- ⊕ Mainline Valve
- ⋯ Half Mile Corridor
- ▨ Avoidance Area - Wooded
- ▨ Exclusion/Avoidance Area
- ▭ National Wetlands Inventory Data



Enbridge Pipelines (Southern Lights) L.L.C.
Southern Lights 20-Inch Crude Line
Environmental Features - North Dakota





- Milepost
- Proposed LSr Oil Pipeline
- Existing Enbridge Lines
- ⊕ Mainline Valve
- Half Mile Corridor
- ▨ Avoidance Area - Wooded
- ▨ Exclusion/Avoidance Area
- National Wetlands Inventory Data

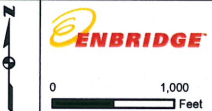
0 1,000 Feet

Enbridge Pipelines (Southern Lights) L.L.C.
Southern Lights 20-Inch Crude Line
Environmental Features - North Dakota



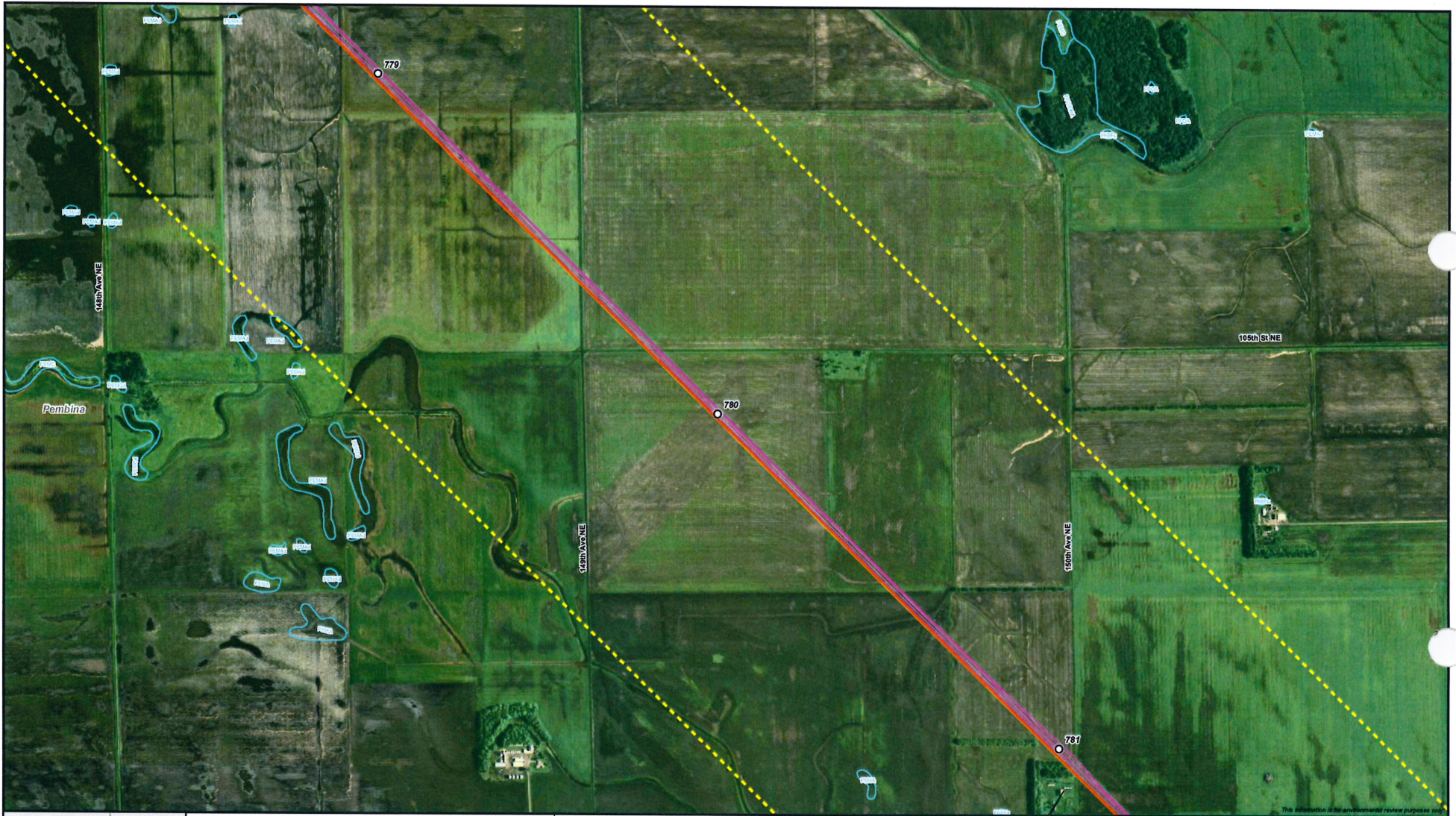


- Milepost
- Proposed LSr Oil Pipeline
- Existing Enbridge Lines
- ⊕ Mainline Valve
- Half Mile Corridor
- ▨ Avoidance Area - Wooded
- ▨ Exclusion/Avoidance Area
- National Wetlands Inventory Data

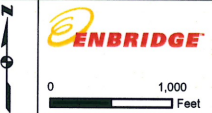


Enbridge Pipelines (Southern Lights) L.L.C.
Southern Lights 20-Inch Crude Line
Environmental Features - North Dakota



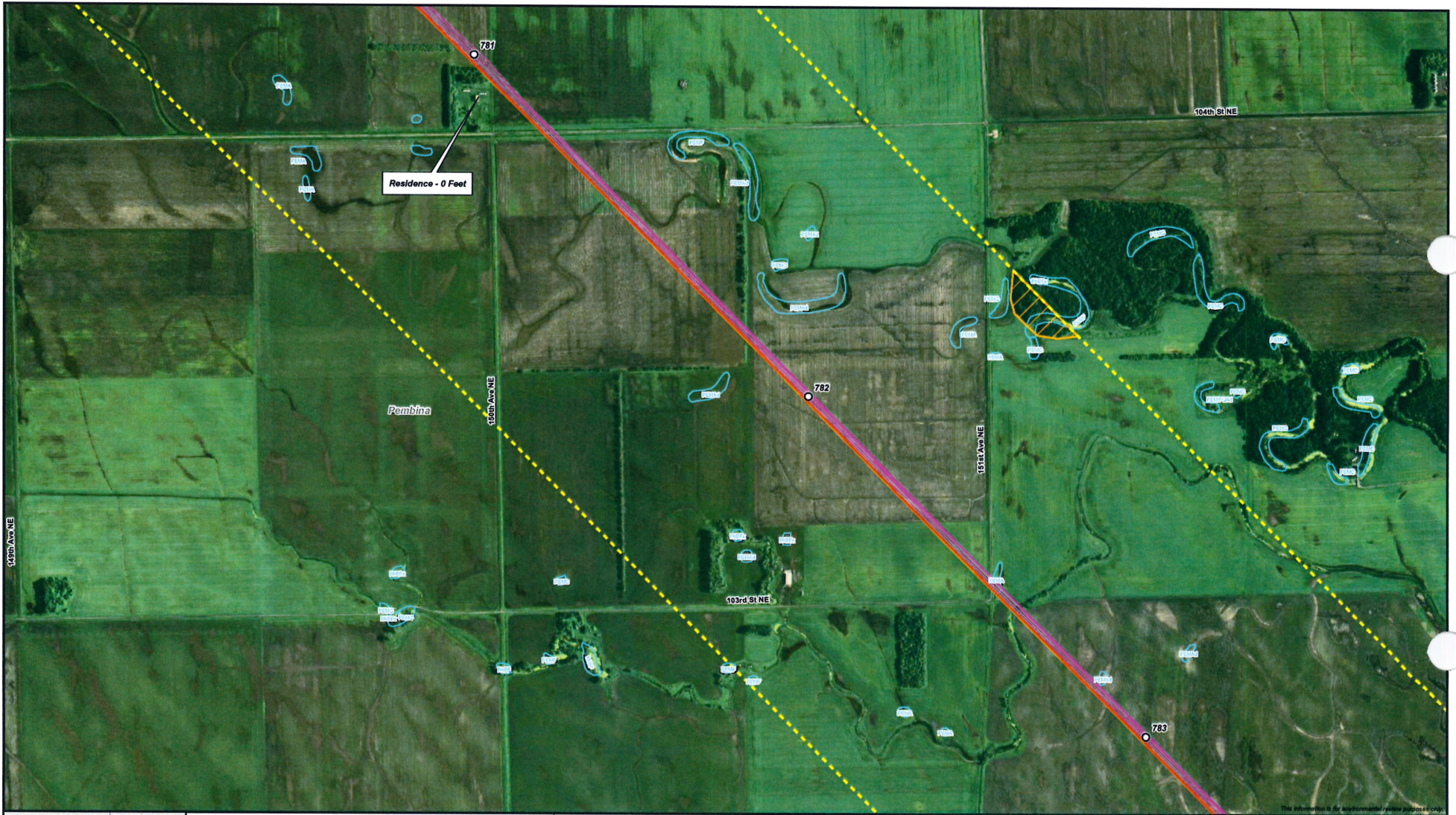


- Milepost
- Proposed LSr Oil Pipeline
- Existing Enbridge Lines
- ⊕ Mainline Valve
- ⋈ Half Mile Corridor
- ▨ Avoidance Area - Wooded
- ▨ Exclusion/Avoidance Area
- ▭ National Wetlands Inventory Data



Enbridge Pipelines (Southern Lights) L.L.C.
Southern Lights 20-Inch Crude Line
Environmental Features - North Dakota





The information is for environmental review purposes only.

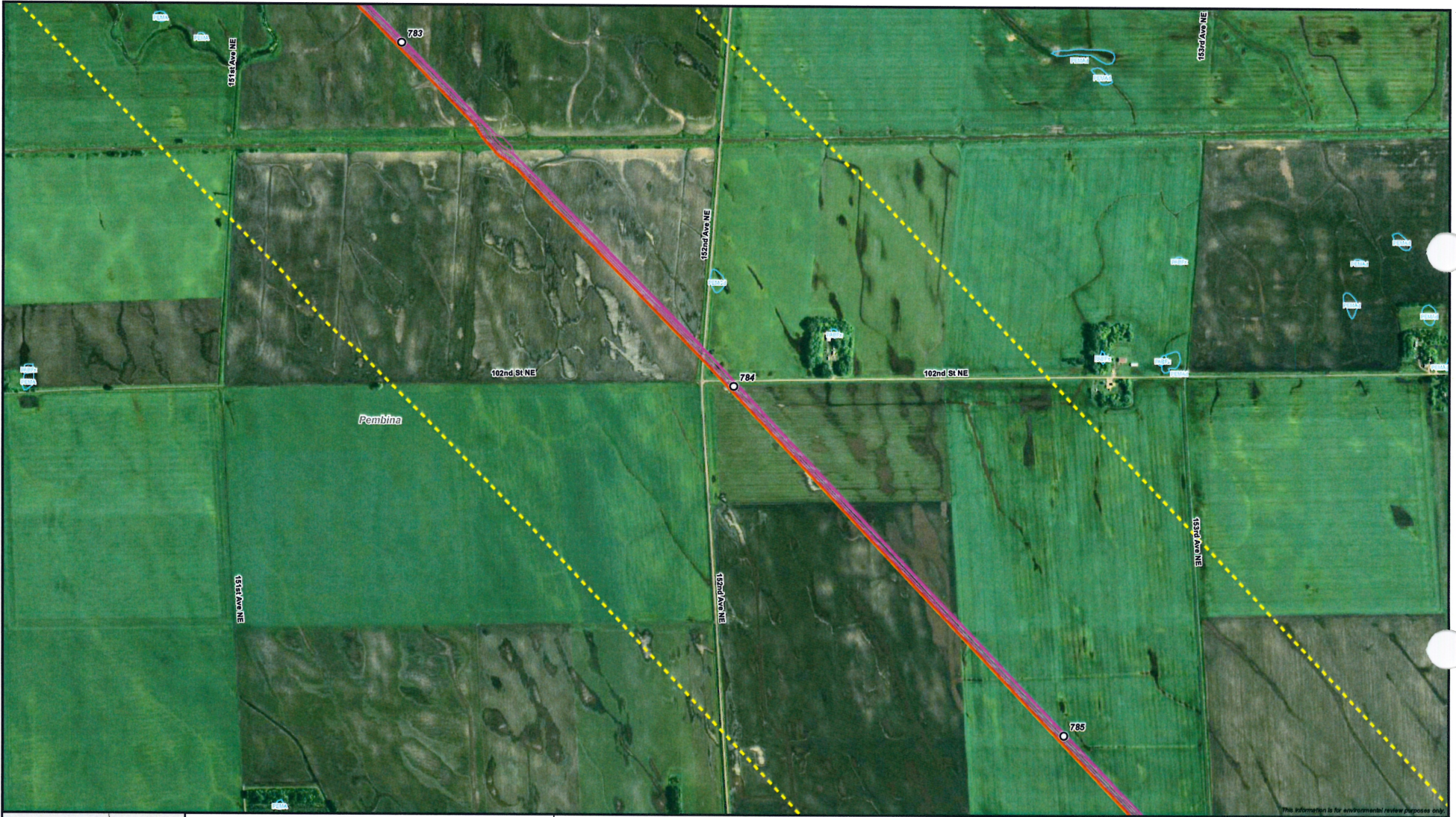


- Milepost
- Proposed LSr Oil Pipeline
- Existing Enbridge Lines
- ⊕ Mainline Valve
- Half Mile Corridor
- ▨ Avoidance Area - Wooded
- ▨ Exclusion/Avoidance Area
- National Wetlands Inventory Data

0 1,000 Feet

Enbridge Pipelines (Southern Lights) L.L.C.
Southern Lights 20-Inch Crude Line
Environmental Features - North Dakota



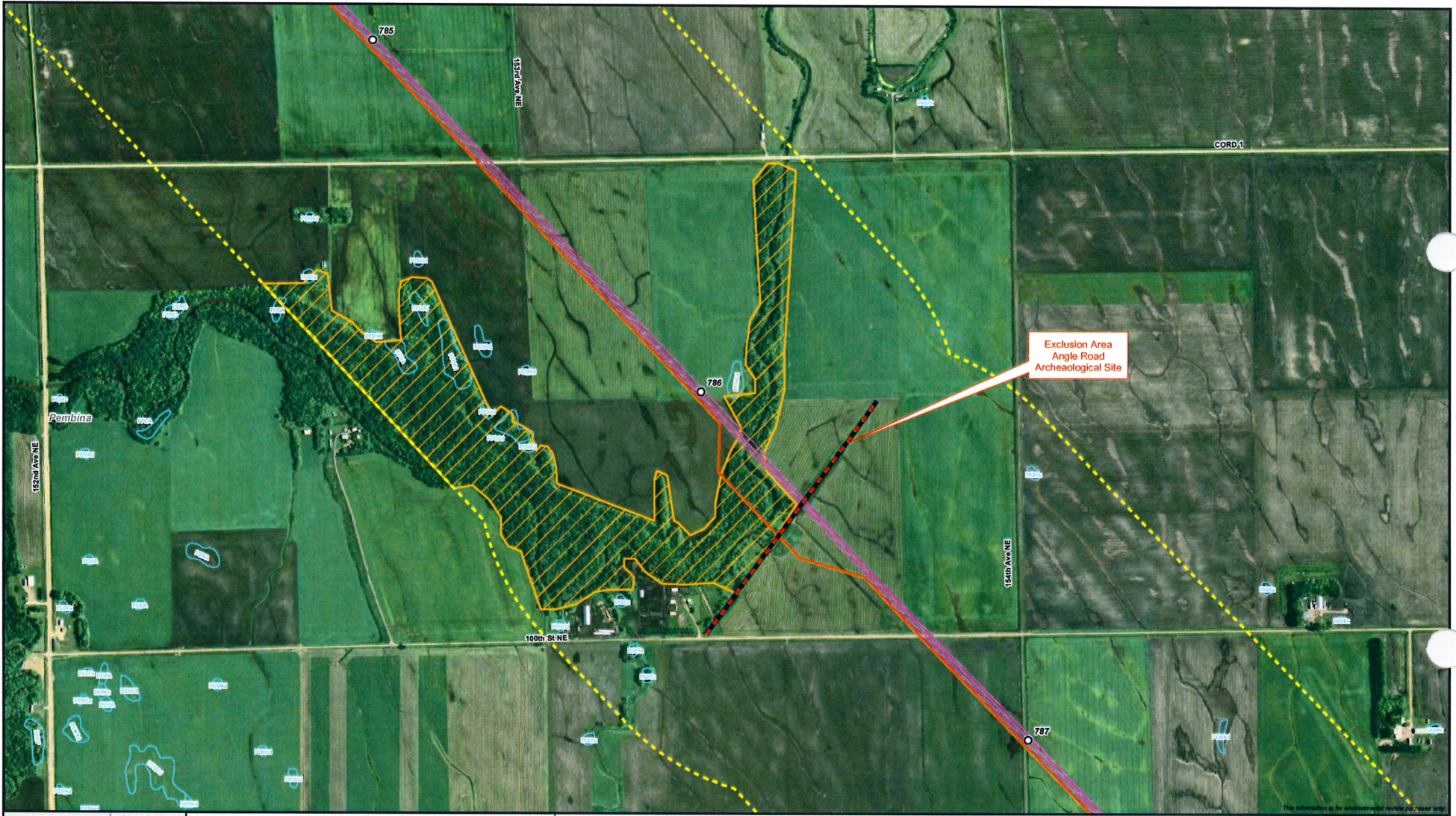


- Milepost
- Proposed LSR Oil Pipeline
- Existing Enbridge Lines
- ⊕ Mainline Valve
- Half Mile Corridor
- ▭ Avoidance Area - Wooded
- ▭ Exclusion/Avoidance Area
- ▭ National Wetlands Inventory Data



Enbridge Pipelines (Southern Lights) L.L.C.
Southern Lights 20-Inch Crude Line
Environmental Features - North Dakota



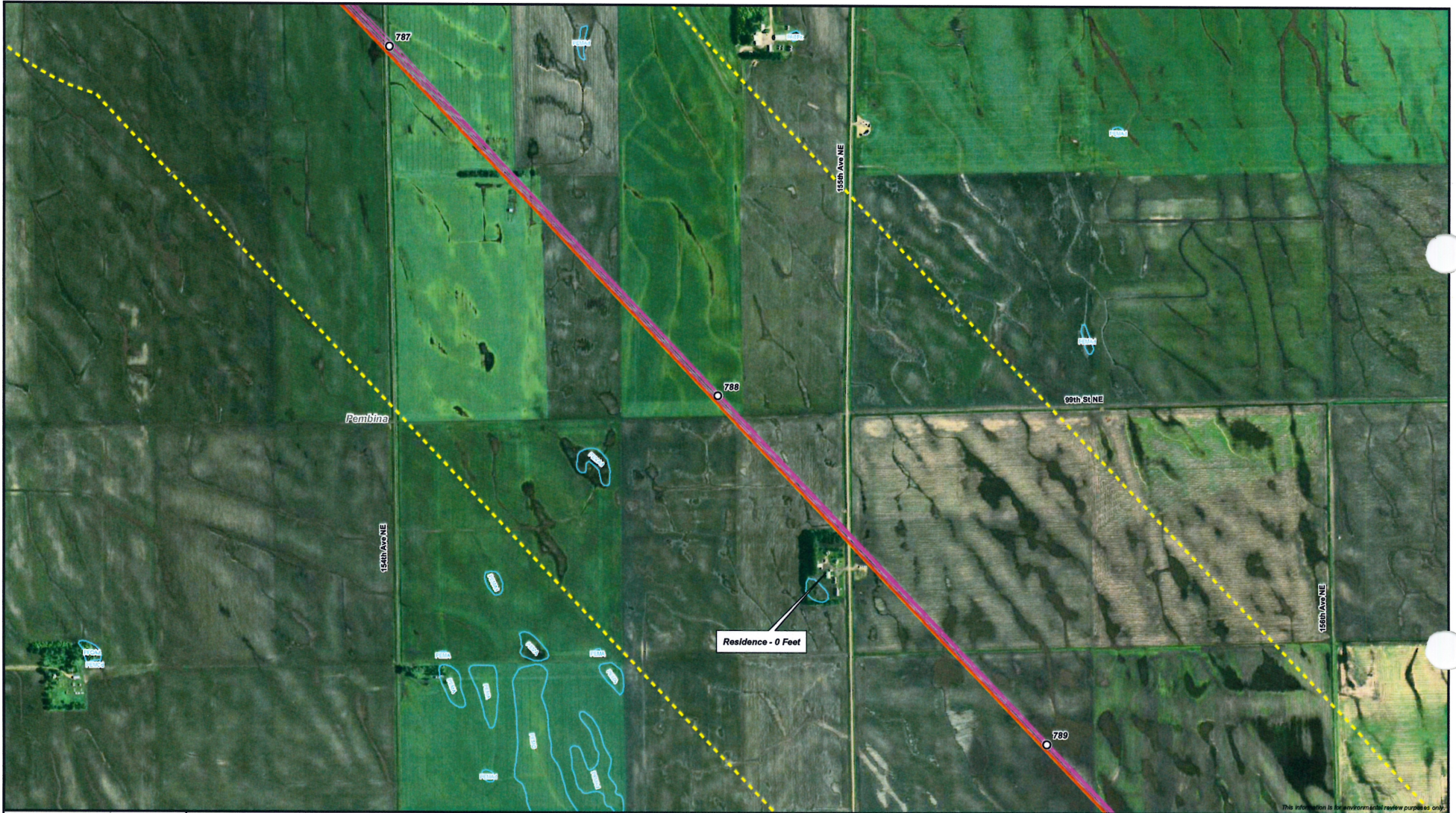


- Milepost
- Proposed LSr Oil Pipeline
- Existing Enbridge Lines
- ⊕ Mainline Valve
- Half Mile Corridor
- ▨ Avoidance Area - Wooded
- ▨ Exclusion/Avoidance Area
- National Wetlands Inventory Data



Enbridge Pipelines (Southern Lights) L.L.C.
Southern Lights 20-Inch Crude Line
Environmental Features - North Dakota





This information is for environmental review purposes only.

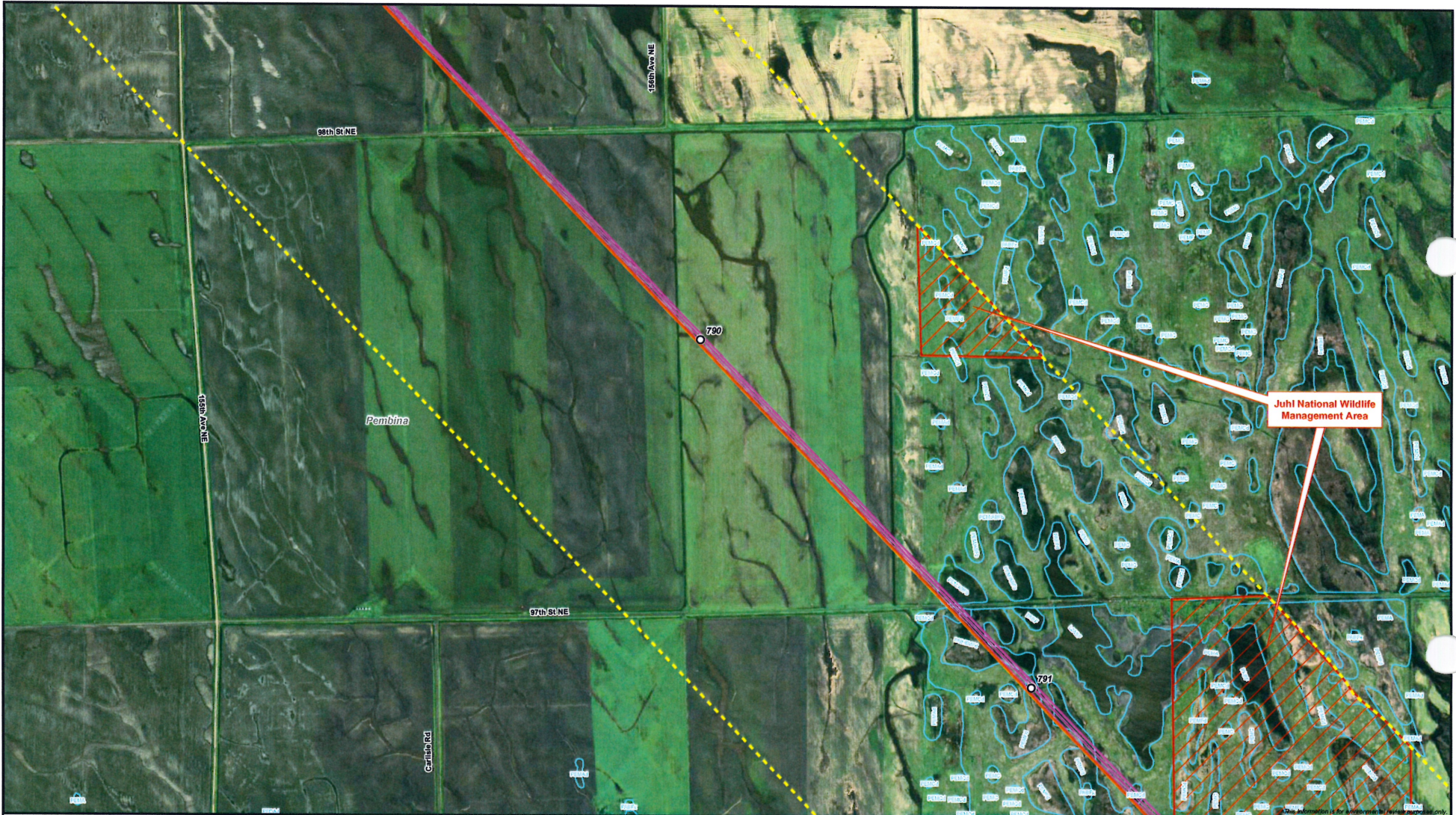


- Milepost
- Proposed L.Sr Oil Pipeline
- Existing Enbridge Lines
- ⊕ Mainline Valve
- Half Mile Corridor
- ▨ Avoidance Area - Wooded
- ▨ Exclusion/Avoidance Area
- ▨ National Wetlands Inventory Data

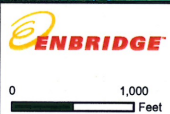
0 1,000 Feet

Enbridge Pipelines (Southern Lights) L.L.C.
Southern Lights 20-Inch Crude Line
 Environmental Features - North Dakota



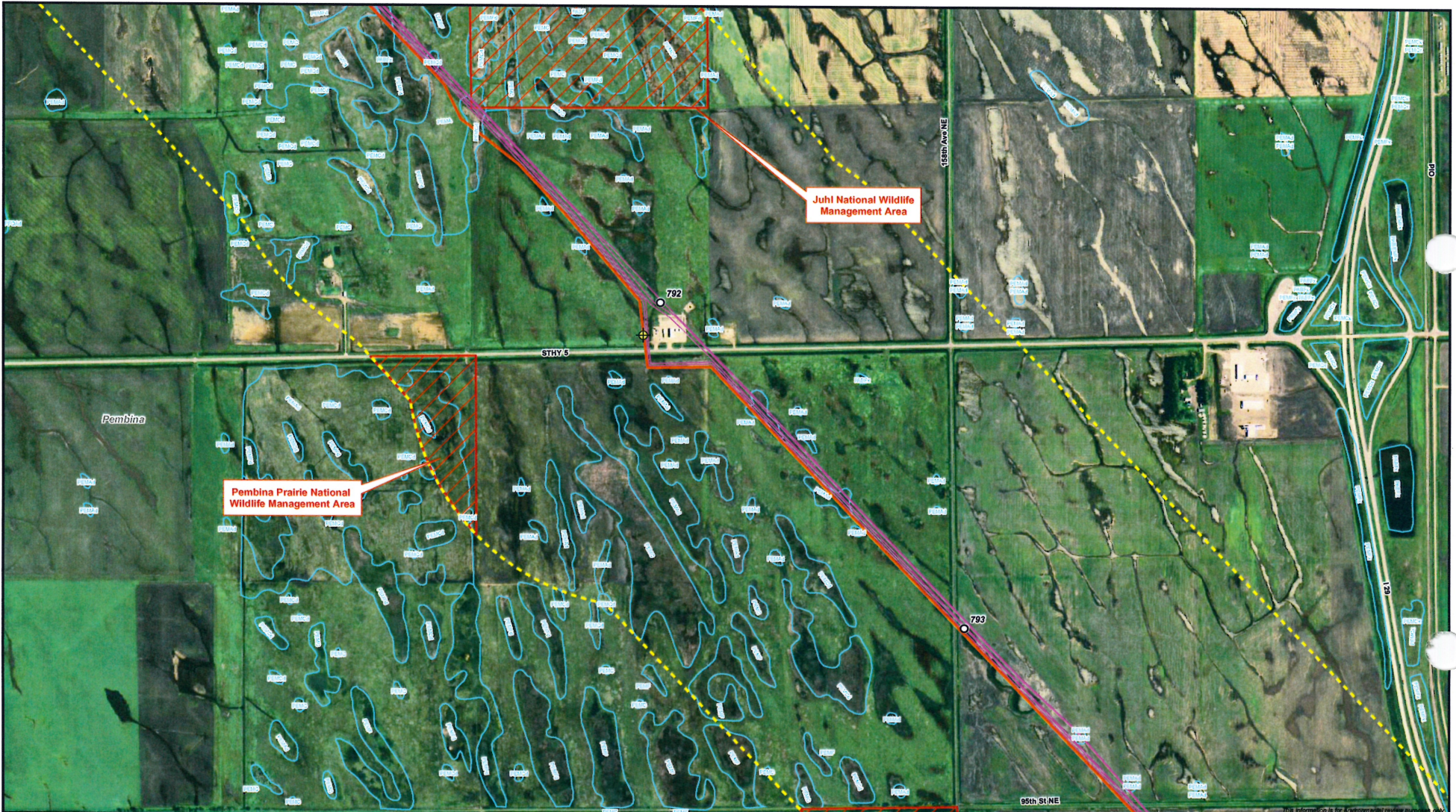


- Milepost
- Proposed LSR Oil Pipeline
- Existing Enbridge Lines
- ⊕ Mainline Valve
- Half Mile Corridor
- ▨ Avoidance Area - Wooded
- ▨ Exclusion/Avoidance Area
- National Wetlands Inventory Data



Enbridge Pipelines (Southern Lights) L.L.C.
Southern Lights 20-Inch Crude Line
 Environmental Features - North Dakota



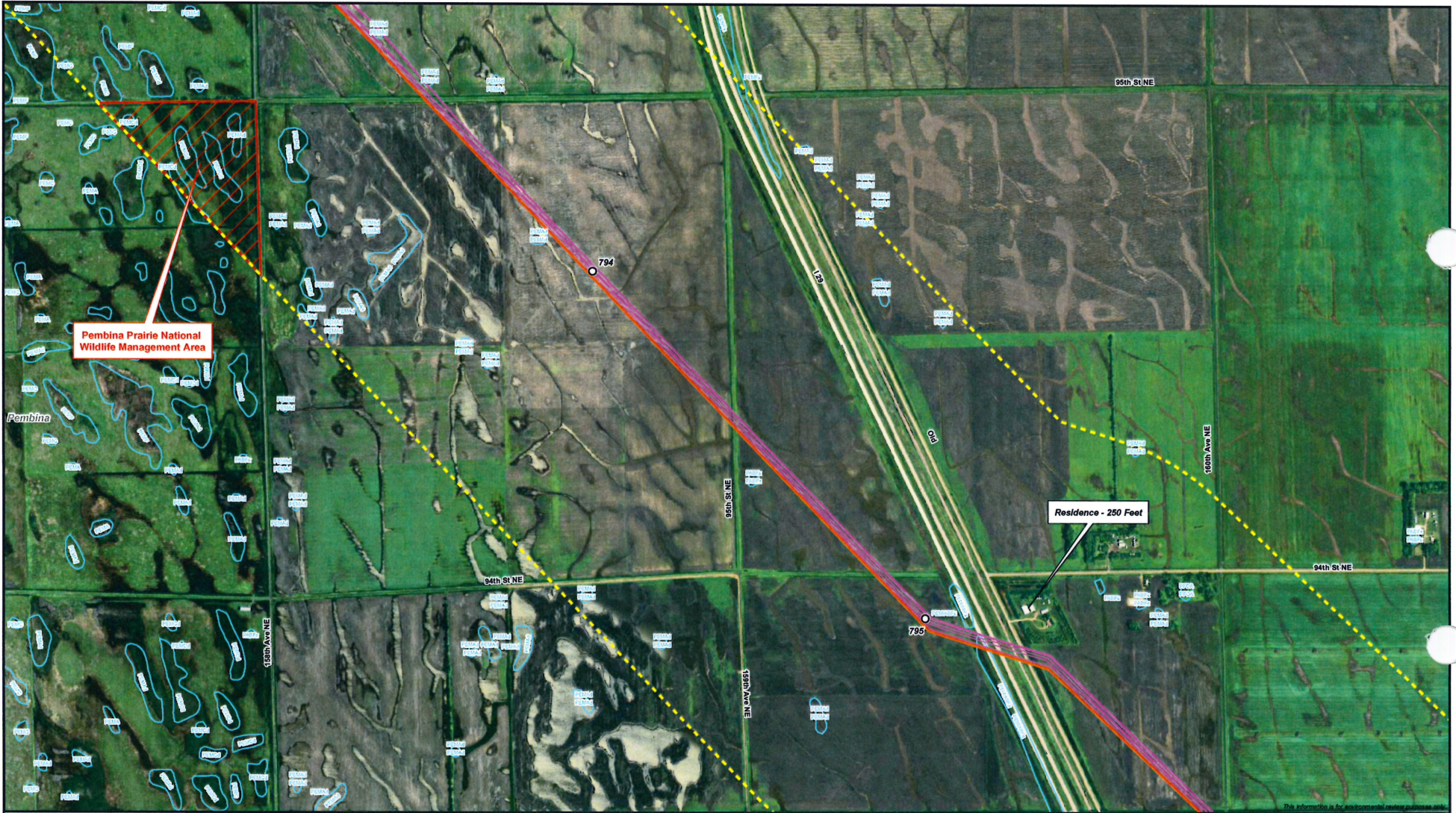


- Milepost
- Proposed LSR Oil Pipeline
- Existing Enbridge Lines
- ⊕ Mainline Valve
- Half Mile Corridor
- ▨ Avoidance Area - Wooded
- ▨ Exclusion/Avoidance Area
- National Wetlands Inventory Data

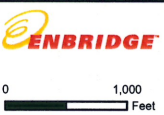


Enbridge Pipelines (Southern Lights) L.L.C.
Southern Lights 20-Inch Crude Line
 Environmental Features - North Dakota





- Milepost
- Proposed LSr Oil Pipeline
- Existing Enbridge Lines
- ⊕ Mainline Valve
- ⋯ Half Mile Corridor
- ▨ Avoidance Area - Wooded
- ▨ Exclusion/Avoidance Area
- ▭ National Wetlands Inventory Data



Enbridge Pipelines (Southern Lights) L.L.C.
Southern Lights 20-Inch Crude Line
Environmental Features - North Dakota





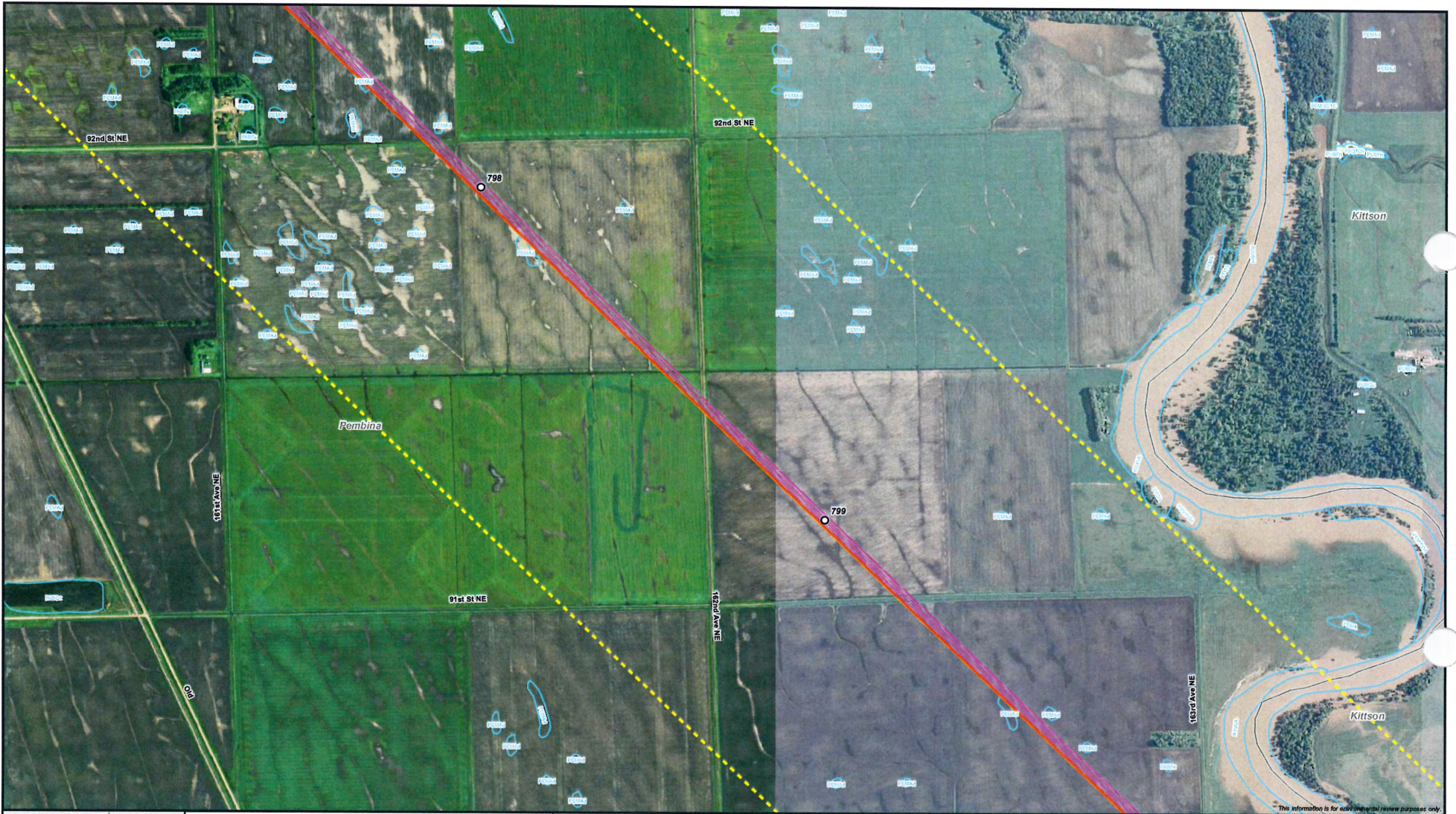
- Milepost
- Proposed LSr Oil Pipeline
- Existing Enbridge Lines
- Mainline Valve
- Half Mile Corridor
- Avoidance Area - Wooded
- Exclusion/Avoidance Area
- National Wetlands Inventory Data



Enbridge Pipelines (Southern Lights) L.L.C.
Southern Lights 20-Inch Crude Line
Environmental Features - North Dakota



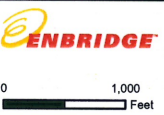
This information is for environmental review purposes only.



This information is for environmental review purposes only.

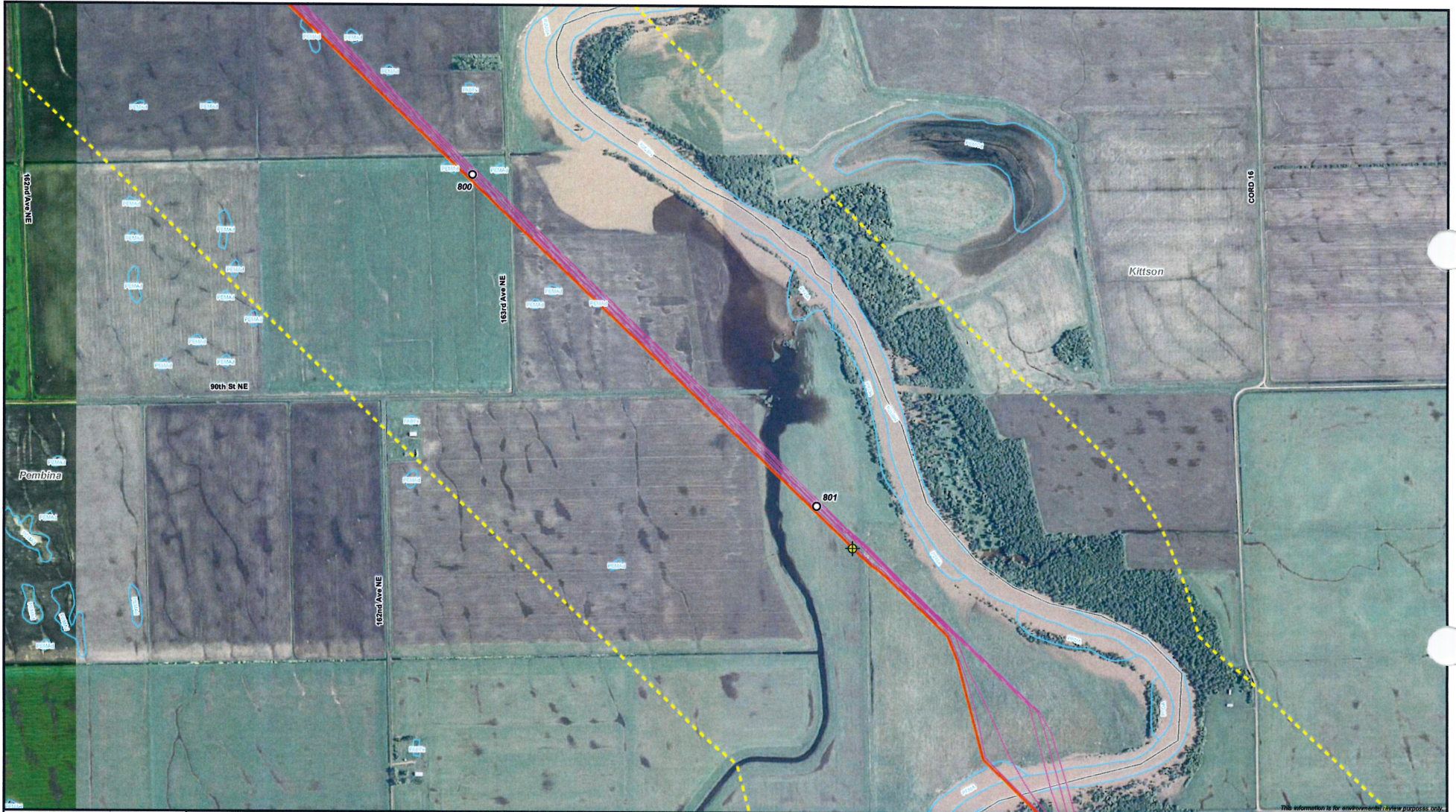


- Milepost
- Proposed LSR Oil Pipeline
- Existing Enbridge Lines
- ⊕ Mainline Valve
- Half Mile Corridor
- ▨ Avoidance Area - Wooded
- ▨ Exclusion/Avoidance Area
- National Wetlands Inventory Data



Enbridge Pipelines (Southern Lights) L.L.C.
Southern Lights 20-Inch Crude Line
Environmental Features - North Dakota



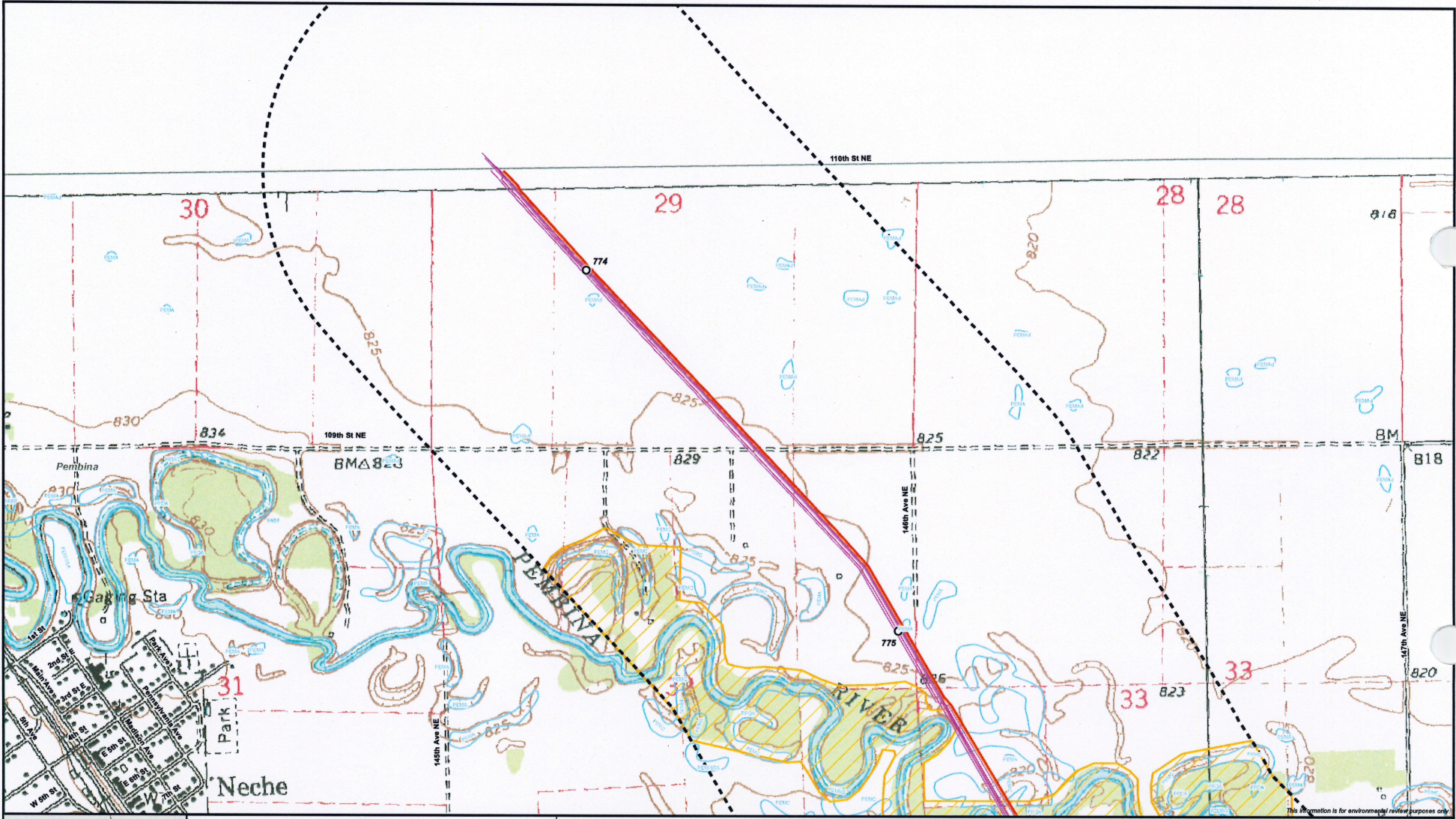


- Milepost
- Proposed LSr Oil Pipeline
- Existing Enbridge Lines
- ⊕ Mainline Valve
- Half Mile Corridor
- Avoidance Area - Wooded
- Exclusion/Avoidance Area
- National Wetlands Inventory Data

0 1,000 Feet

Enbridge Pipelines (Southern Lights) L.L.C.
Southern Lights 20-Inch Crude Line
Environmental Features - North Dakota



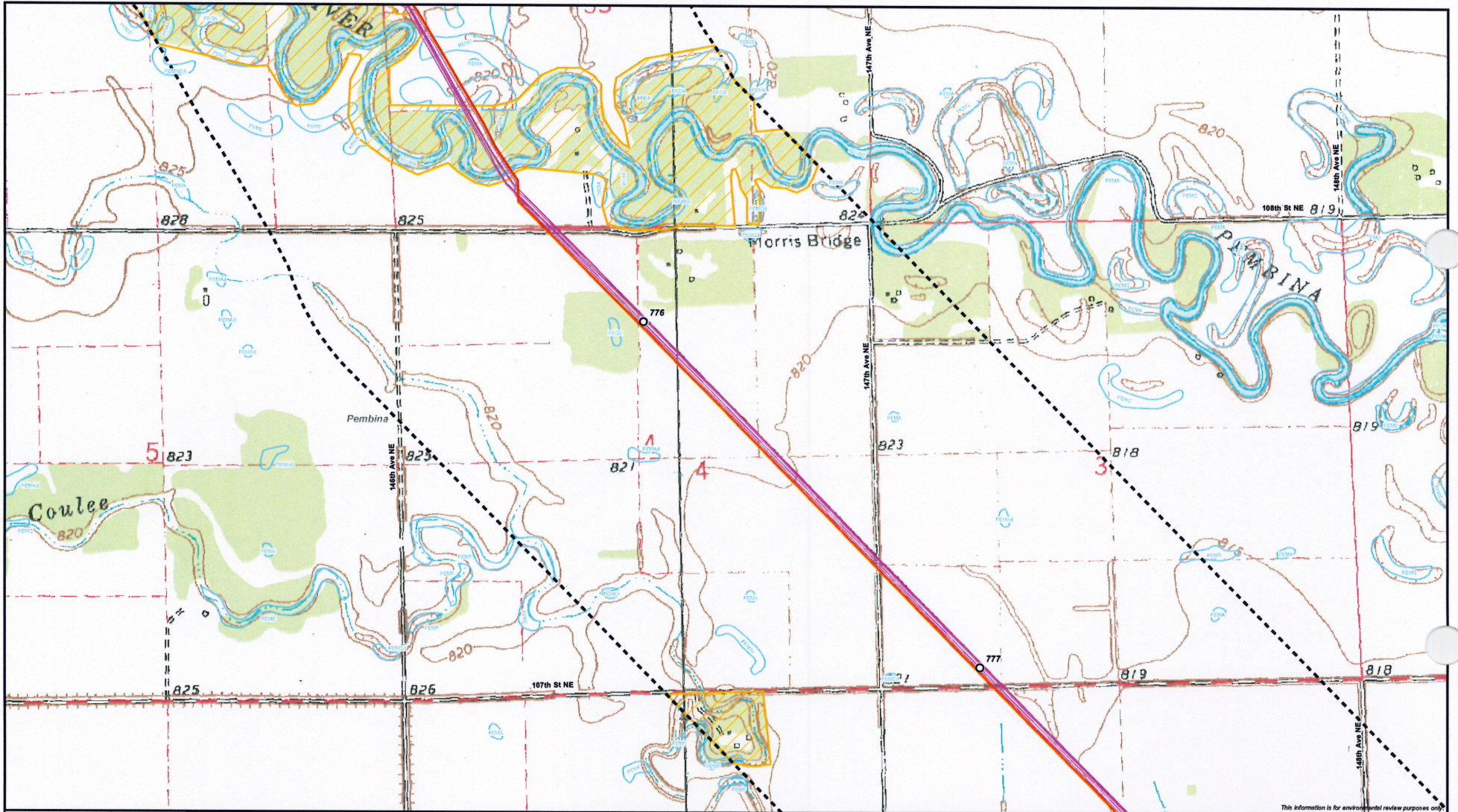


- Milepost
- Mainline Valve
- Proposed Lsr Oil Pipeline
- Existing Enbridge Lines
- Half Mile Corridor
- Avoidance Area - Wooded
- Exclusion/Avoidance Area
- National Wetlands Inventory Data



Enbridge Pipelines (Southern Lights) L.L.C.
Southern Lights 20-Inch Crude Line
 Environmental Features - North Dakota





This information is for environmental review purposes only.

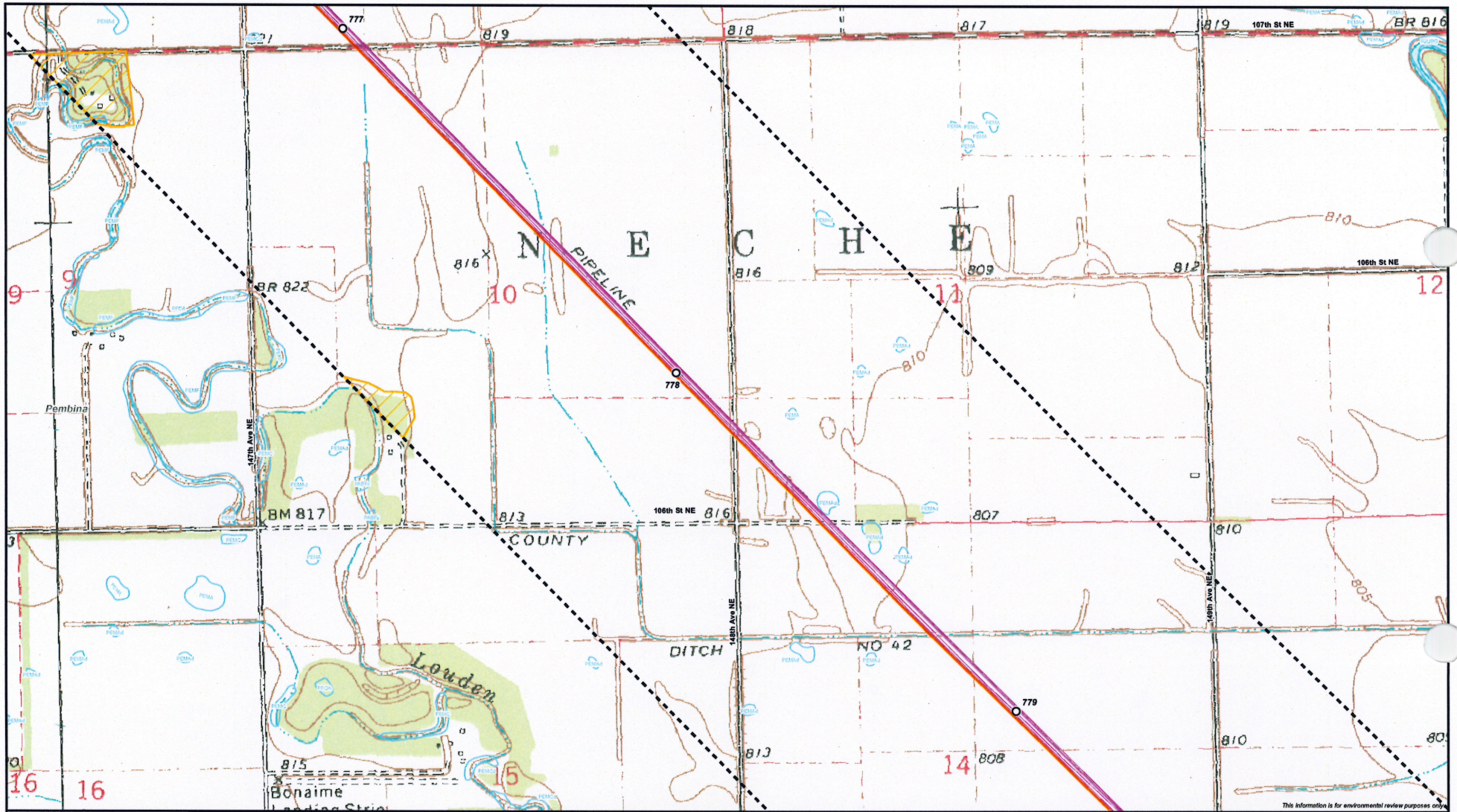


- Milepost
- ⊕ Mainline Valve
- Proposed LSr Oil Pipeline
- Existing Enbridge Lines
- ⋮ Half Mile Corridor
- ▨ Avoidance Area - Wooded
- ▨ Exclusion/Avoidance Area
- ▨ National Wetlands Inventory Data

0 1,000 Feet

Enbridge Pipelines (Southern Lights) L.L.C.
Southern Lights 20-Inch Crude Line
Environmental Features - North Dakota



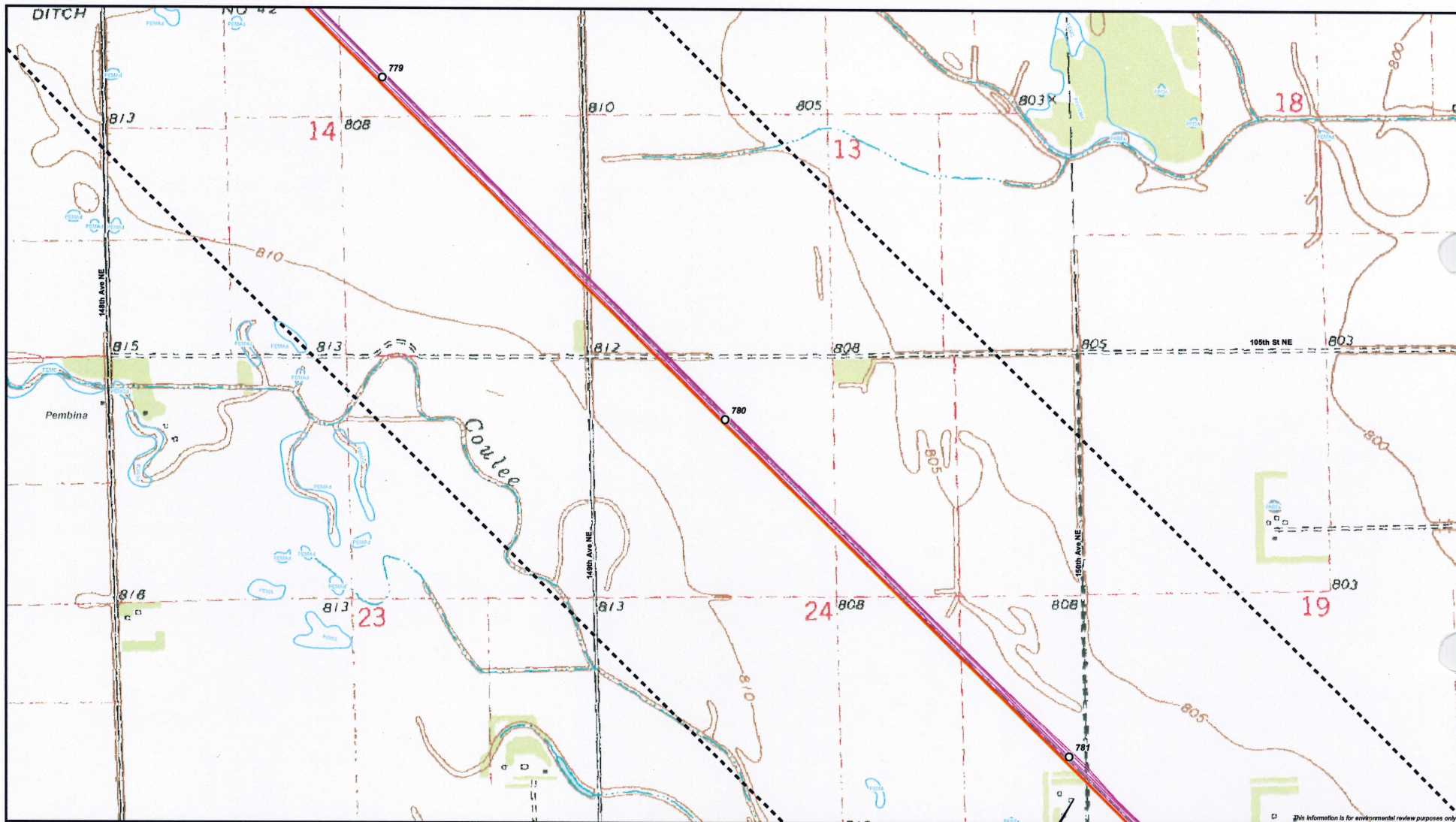


- Milepost
- Mainline Valve
- Proposed L&R Oil Pipeline
- Existing Enbridge Lines
- Half Mile Corridor
- Avoidance Area - Wooded
- Exclusion/Avoidance Area
- National Wetlands Inventory Data



Enbridge Pipelines (Southern Lights) L.L.C.
Southern Lights 20-Inch Crude Line
Environmental Features - North Dakota





This information is for environmental review purposes only.

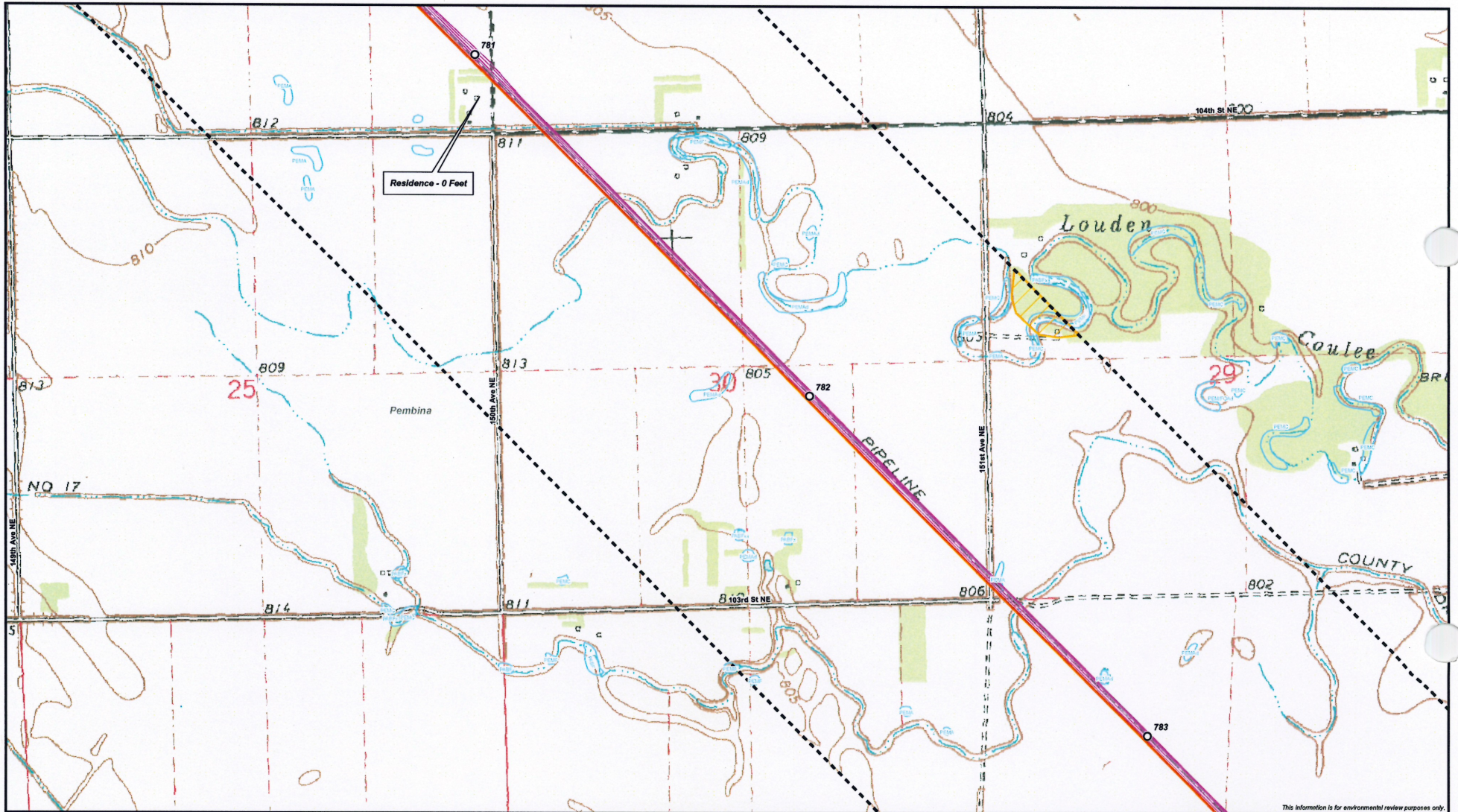


- Milepost
- Mainline Valve
- Proposed LSr Oil Pipeline
- Existing Enbridge Lines
- Half Mile Corridor
- Avoidance Area - Wooded
- Exclusion/Avoidance Area
- National Wetlands Inventory Data

0 1,000 Feet

Enbridge Pipelines (Southern Lights) L.L.C.
Southern Lights 20-Inch Crude Line
Environmental Features - North Dakota





This information is for environmental review purposes only.



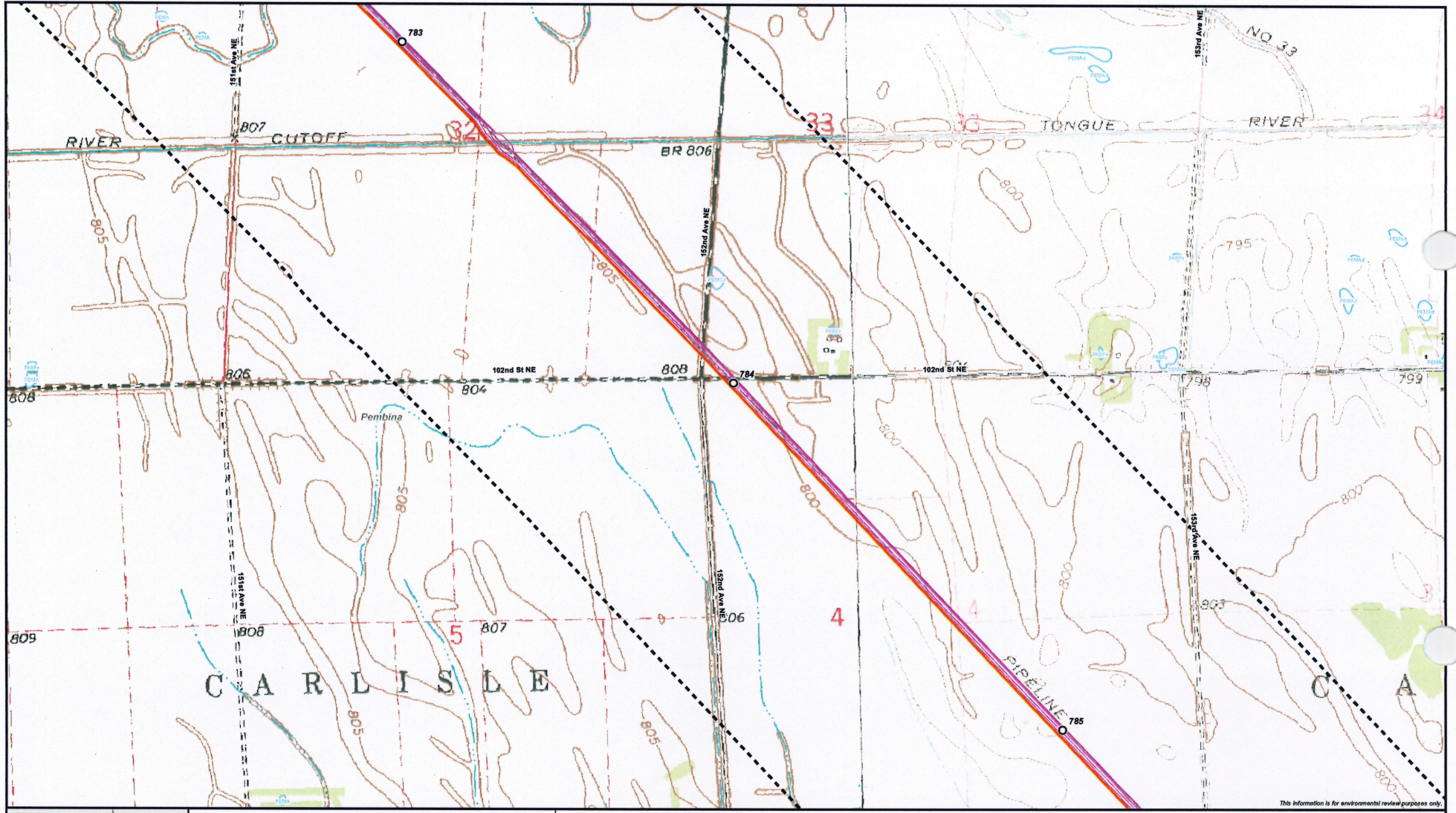
- Milepost
- Mainline Valve
- Proposed Lsr Oil Pipeline
- Existing Enbridge Lines
- Half Mile Corridor
- Avoidance Area - Wooded
- Exclusion/Avoidance Area
- National Wetlands Inventory Data



Enbridge Pipelines (Southern Lights) L.L.C.
Southern Lights 20-Inch Crude Line
Environmental Features - North Dakota



Sheet 5f 14



This information is for environmental review purposes only.

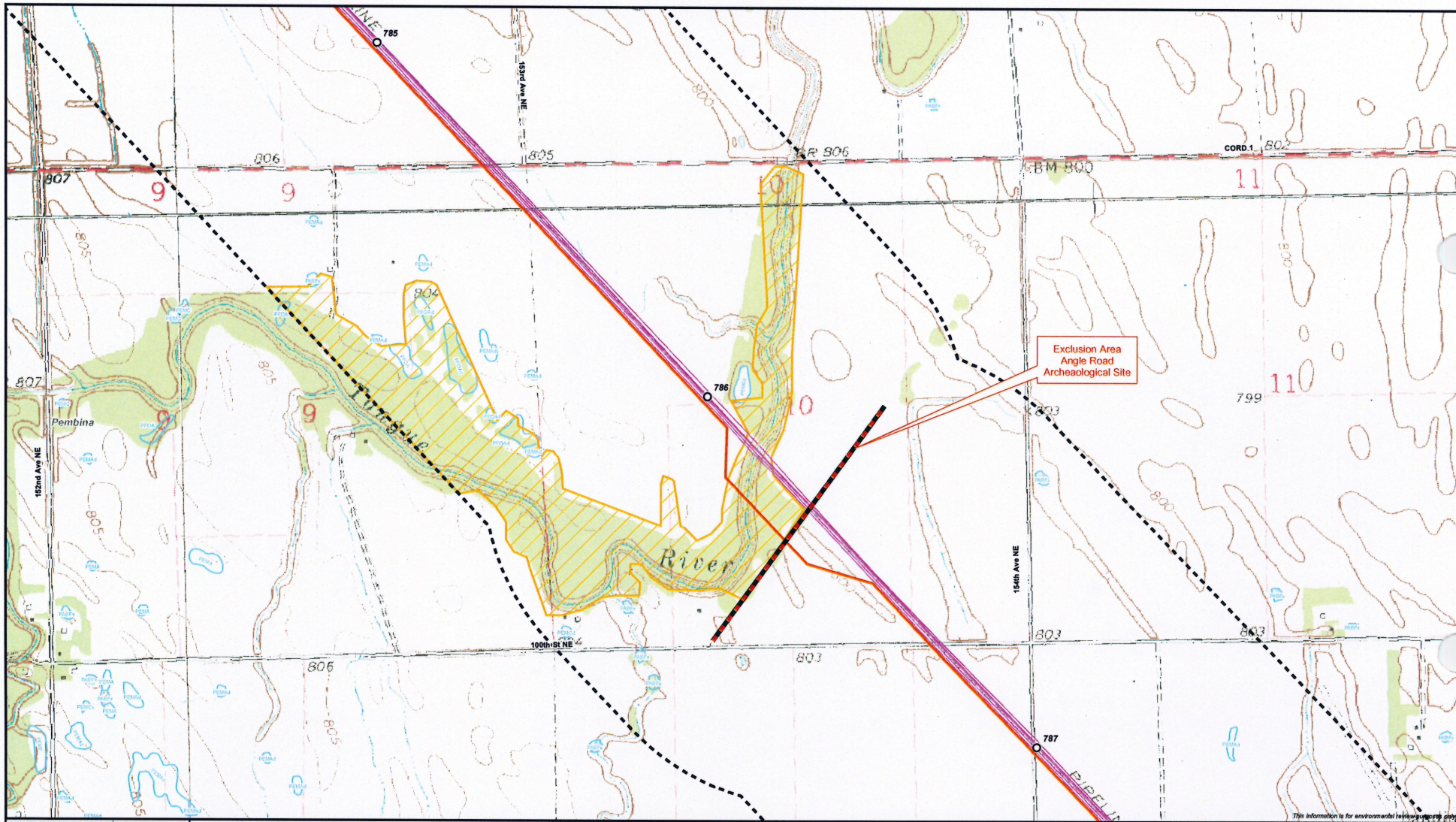


- Milepost
- Mainline Valve
- Proposed LSr Oil Pipeline
- Existing Enbridge Lines
- Half Mile Corridor
- Avoidance Area - Wooded
- Exclusion/Avoidance Area
- National Wetlands Inventory Data

0 1,000 Feet

Enbridge Pipelines (Southern Lights) L.L.C.
Southern Lights 20-Inch Crude Line
Environmental Features - North Dakota



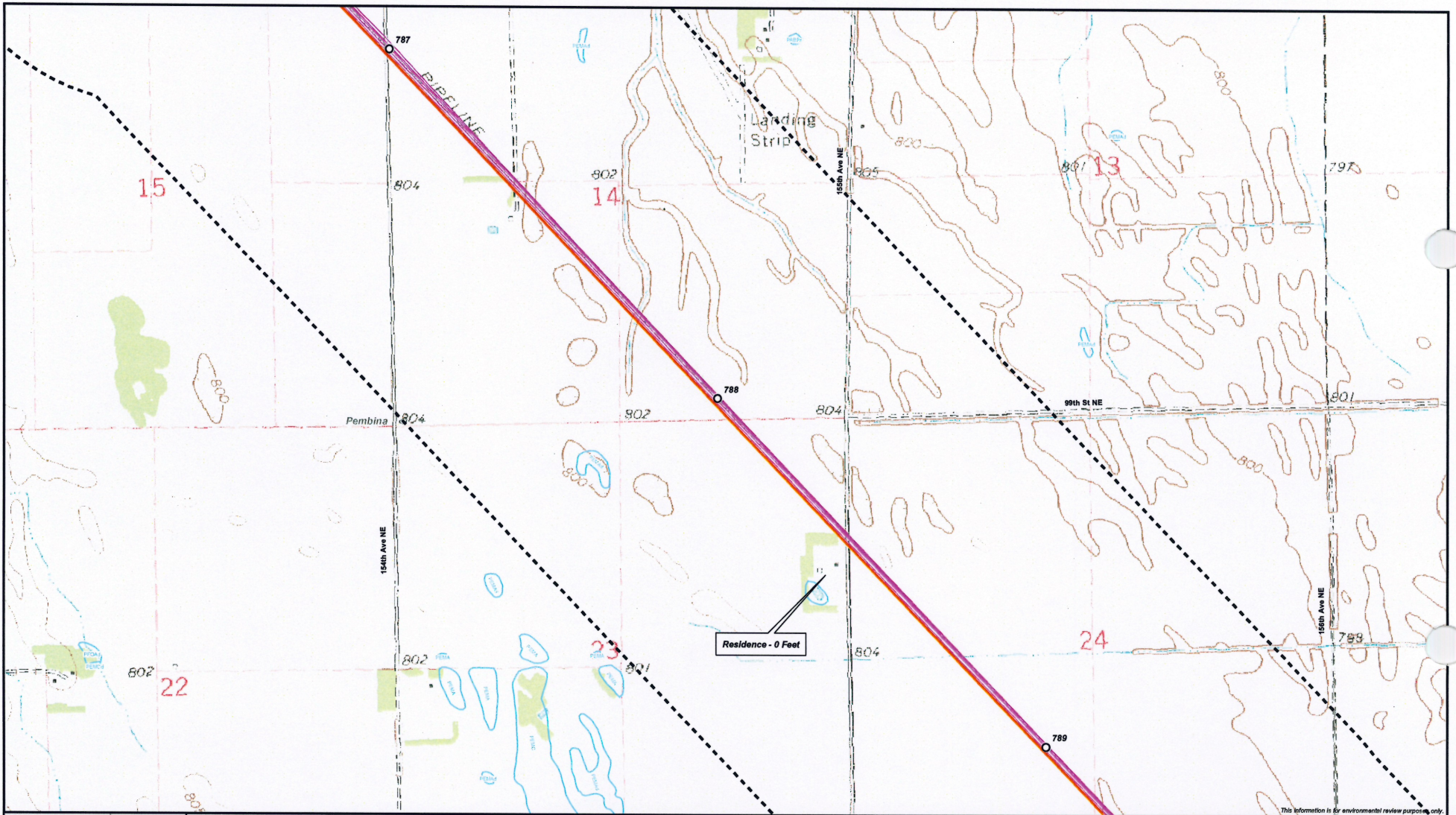


- Milepost
- Mainline Valve
- Proposed LSr Oil Pipeline
- Existing Enbridge Lines
- Half Mile Corridor
- Avoidance Area - Wooded
- Exclusion/Avoidance Area
- National Wetlands Inventory Data



Enbridge Pipelines (Southern Lights) L.L.C.
Southern Lights 20-Inch Crude Line
Environmental Features - North Dakota





This information is for environmental review purposes only.

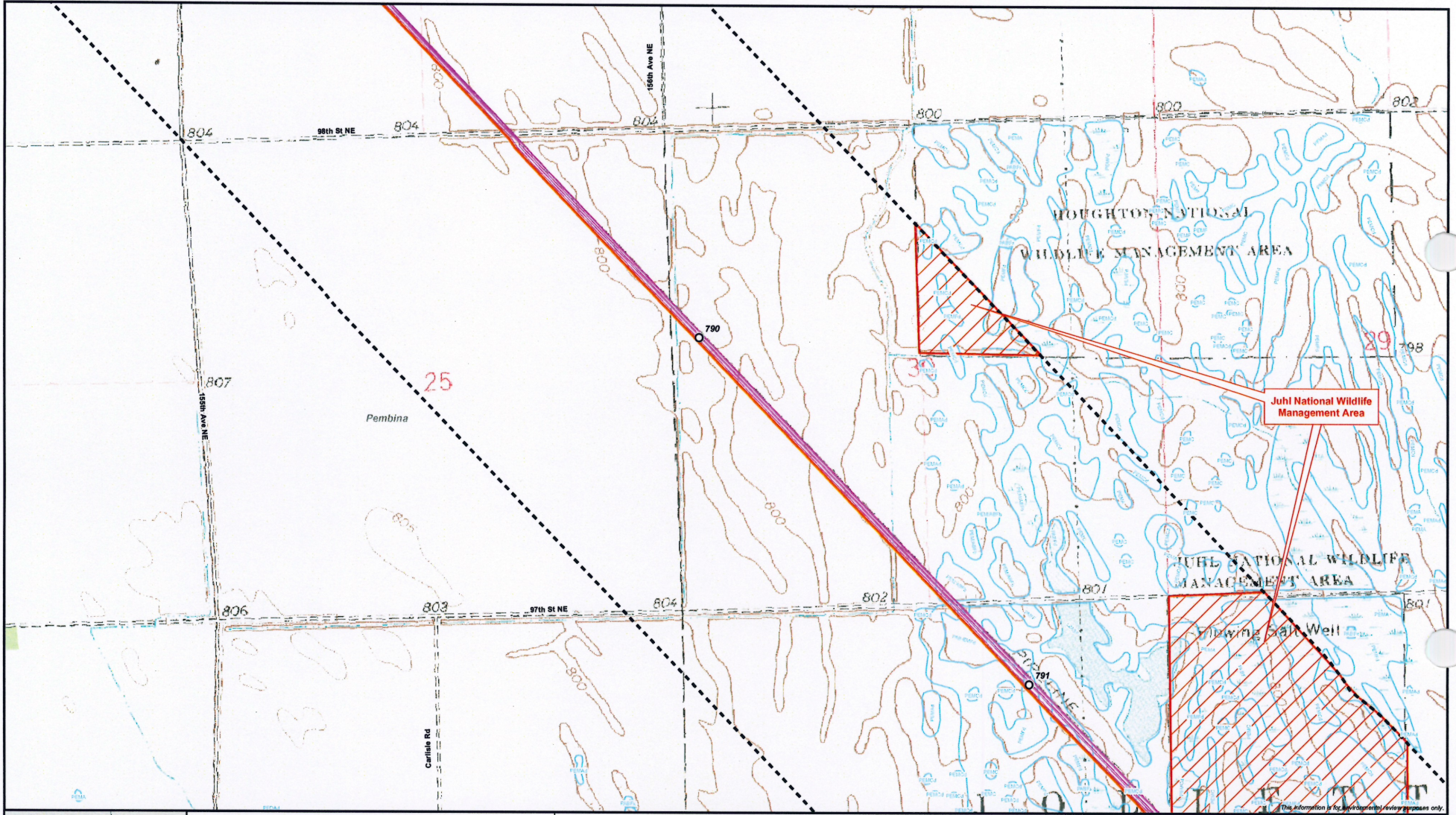


- Milepost
- ⊕ Mainline Valve
- Proposed Lsr Oil Pipeline
- Existing Enbridge Lines
- ⊞ Half Mile Corridor
- ▭ Avoidance Area - Wooded
- ▭ Exclusion/Avoidance Area
- ▭ National Wetlands Inventory Data

0 1,000 Feet

Enbridge Pipelines (Southern Lights) L.L.C.
Southern Lights 20-Inch Crude Line
Environmental Features - North Dakota





- Milepost
- Mainline Valve
- Proposed LSr Oil Pipeline
- Existing Enbridge Lines
- Half Mile Corridor
- Avoidance Area - Wooded
- Exclusion/Avoidance Area
- National Wetlands Inventory Data

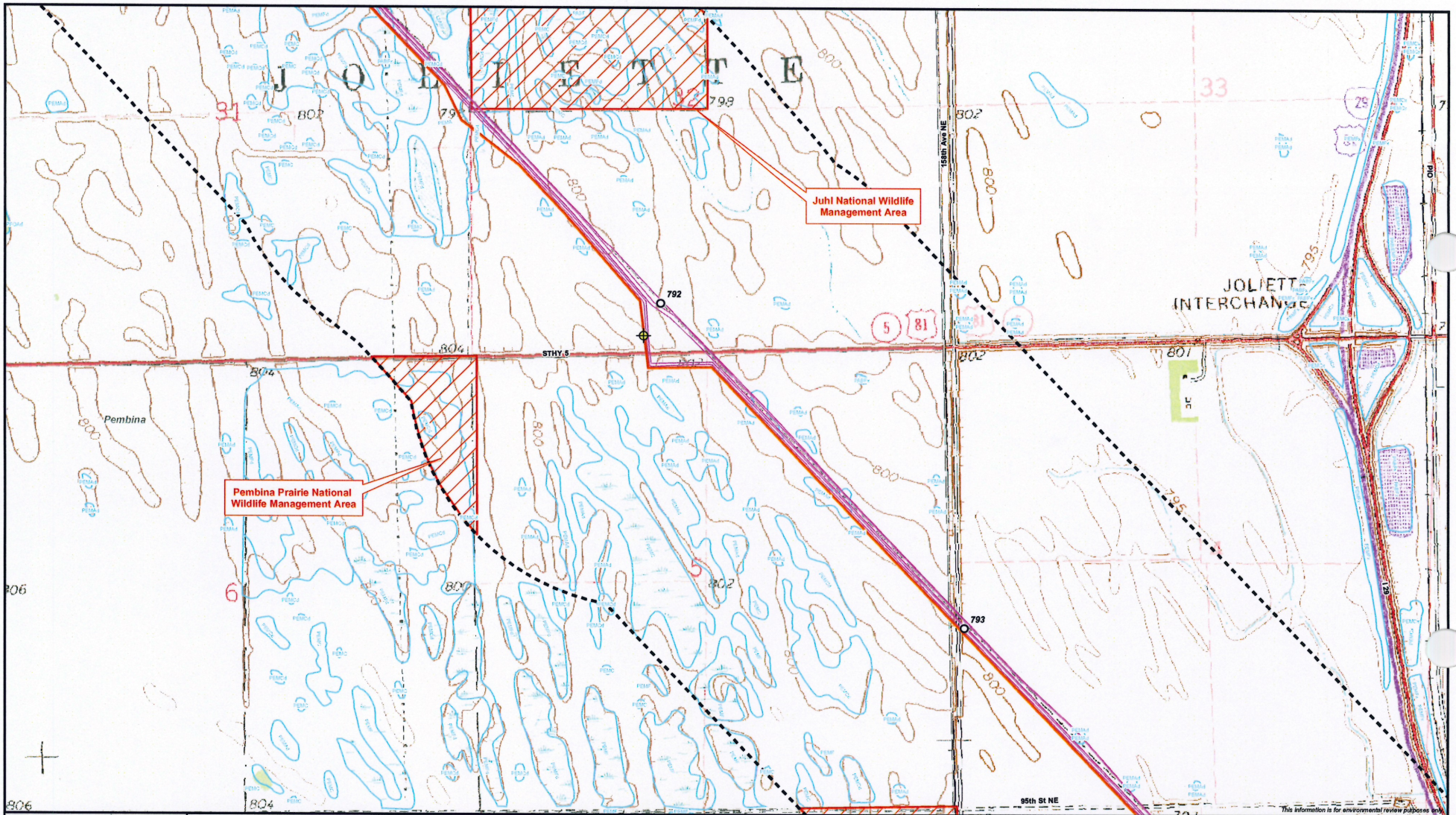
ENBRIDGE

0 1,000
Feet

Enbridge Pipelines (Southern Lights) L.L.C.
Southern Lights 20-Inch Crude Line
Environmental Features - North Dakota

This information is for informational review purposes only.



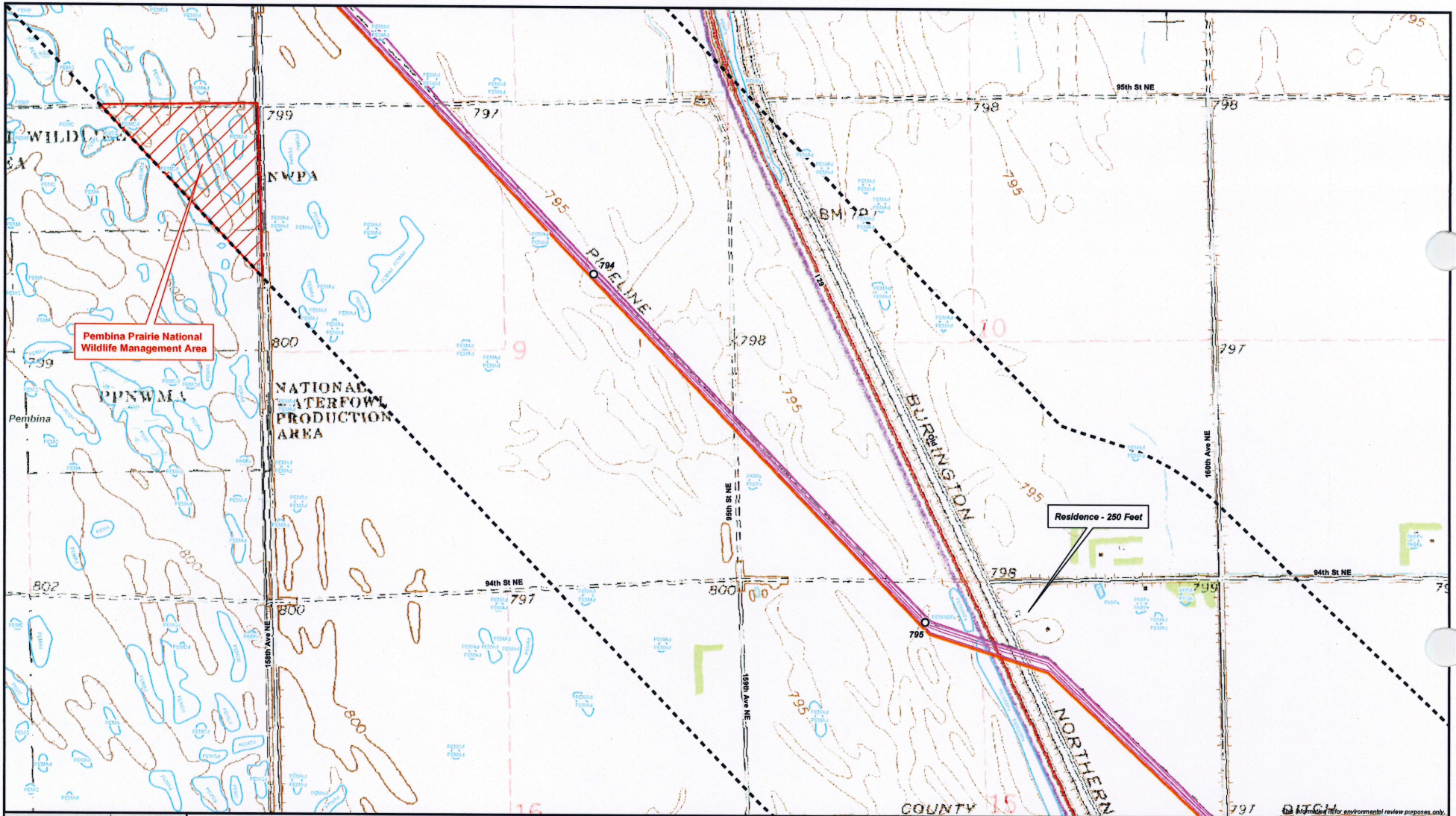


- Milepost
- ⊕ Mainline Valve
- Proposed LSr Oil Pipeline
- Existing Enbridge Lines
- ⊞ Half Mile Corridor
- ▨ Avoidance Area - Wooded
- ▨ Exclusion/Avoidance Area
- ▨ National Wetlands Inventory Data

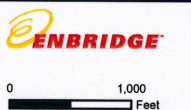


Enbridge Pipelines (Southern Lights) L.L.C.
Southern Lights 20-Inch Crude Line
Environmental Features - North Dakota



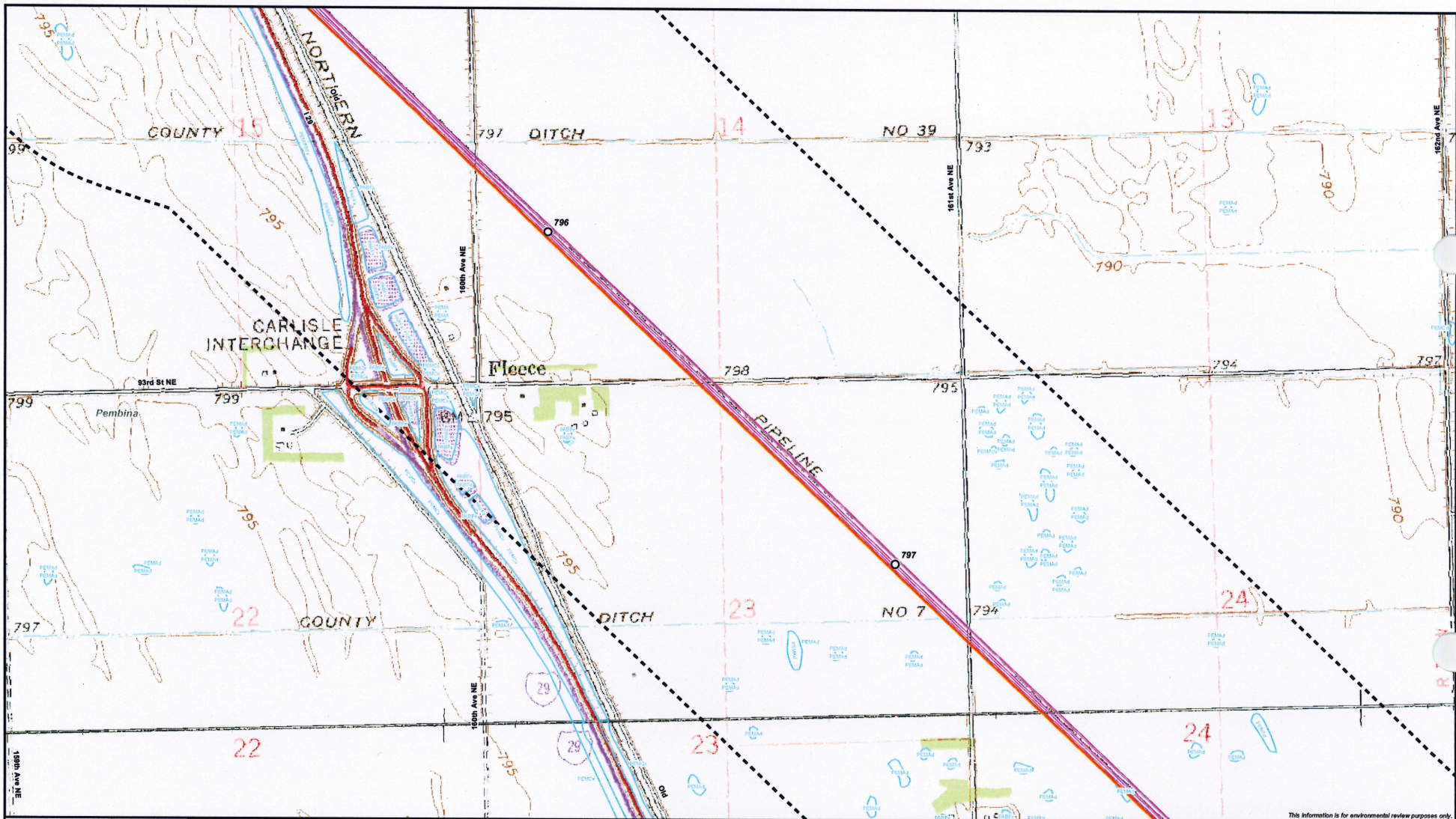


- Milepost
- ⊕ Mainline Valve
- Proposed Lsr Oil Pipeline
- Existing Enbridge Lines
- Half Mile Corridor
- ▭ Avoidance Area - Wooded
- ▭ Exclusion/Avoidance Area
- ▭ National Wetlands Inventory Data



Enbridge Pipelines (Southern Lights) L.L.C.
Southern Lights 20-Inch Crude Line
Environmental Features - North Dakota

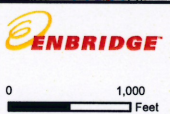




This information is for environmental review purposes only.

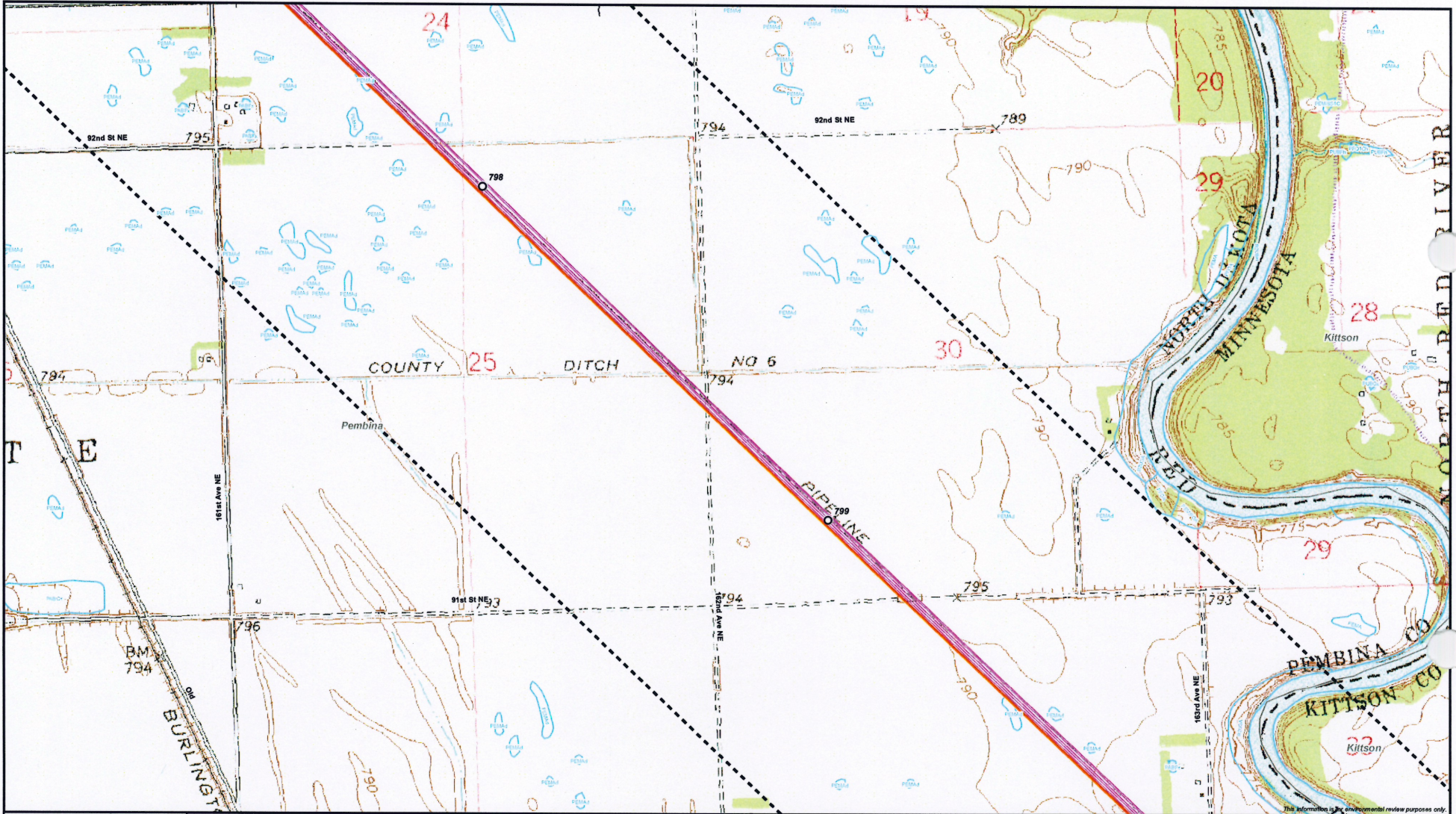


- Milepost
- ⊕ Mainline Valve
- Proposed Lsr Oil Pipeline
- Existing Enbridge Lines
- ⊞ Half Mile Corridor
- ▨ Avoidance Area - Wooded
- ▨ Exclusion/Avoidance Area
- ▭ National Wetlands Inventory Data



Enbridge Pipelines (Southern Lights) L.L.C.
Southern Lights 20-Inch Crude Line
Environmental Features - North Dakota



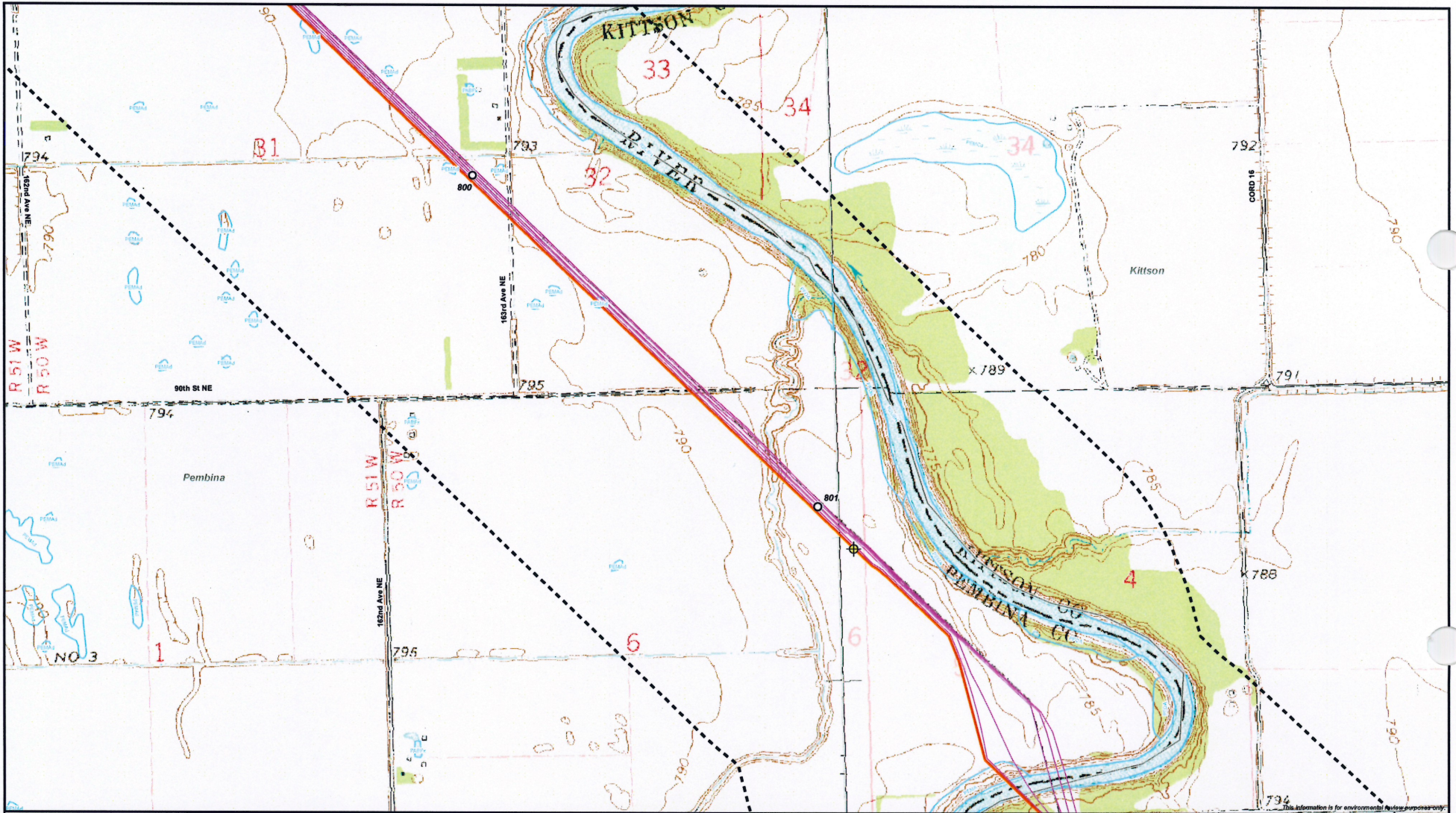


- Milepost
- Mainline Valve
- Proposed Lsr Oil Pipeline
- Existing Enbridge Lines
- Half Mile Corridor
- Avoidance Area - Wooded
- Exclusion/Avoidance Area
- National Wetlands Inventory Data



Enbridge Pipelines (Southern Lights) L.L.C.
Southern Lights 20-Inch Crude Line
Environmental Features - North Dakota





- Milepost
- ⊕ Mainline Valve
- Proposed L.Sr Oil Pipeline
- Existing Enbridge Lines
- ⊞ Half Mile Corridor
- ▨ Avoidance Area - Wooded
- ▨ Exclusion/Avoidance Area
- ▭ National Wetlands Inventory Data

0 1,000 Feet

Enbridge Pipelines (Southern Lights) L.L.C.
Southern Lights 20-Inch Crude Line
Environmental Features - North Dakota

