









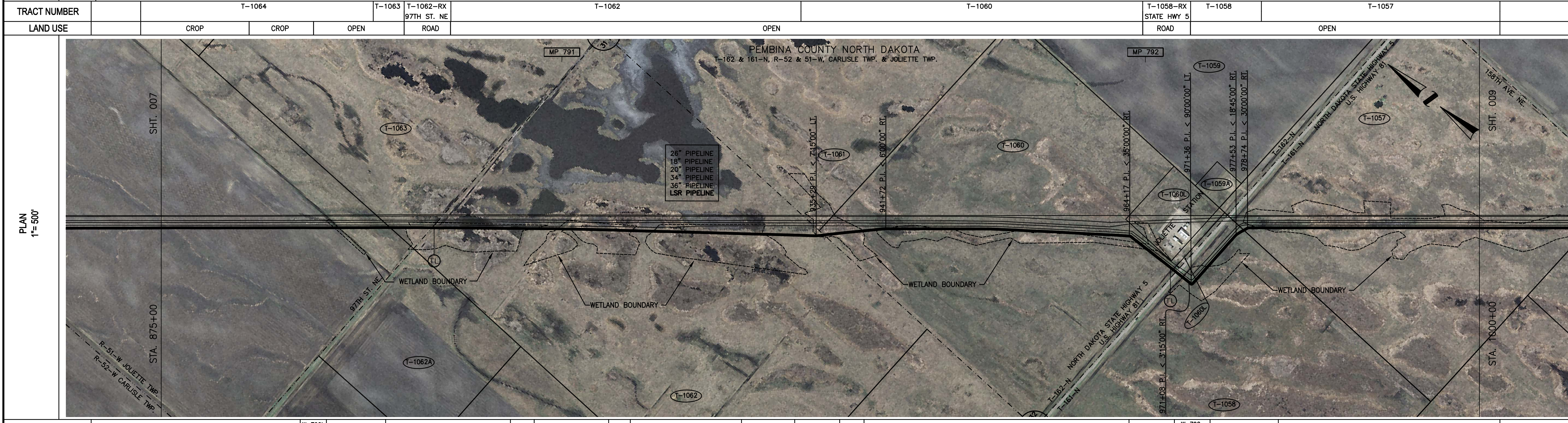






CROSSING INFORMATION														
	XX" LINE MATERIALS ALL PIPE IS XX" O.D. PIPE GRADE COATING													
TRACT NUMBER	T-1064			T-1063	T-1062-RX 97TH ST. NE		T-1062			T-1060	T-1058-RX STATE HWY 5	T-1058	T-1057	
LAND USE	CROP		CROP	OPEN	ROAD			OPEN			ROAD	OPEN		

LEGEND	
	INTERSTATE HIGHWAY
	US HIGHWAY
	STATE HIGHWAY
	CO. STATE AID HIGHWAYS
	COUNTY ROAD
	REPAIR SLEEVE
	RECTIFIER
	WELD PLUS
	TEST LEAD
	XXXX M. P. MARKER
	XXXX AERIAL M.P. MARKER
	ROCK SHIELD
	SET ON WEIGHTS
	CONCRETE COATING
	CASING
	MOTOR OPERATED VALVE
	GATE VALVE
	TEE
	STOPPLE TEE

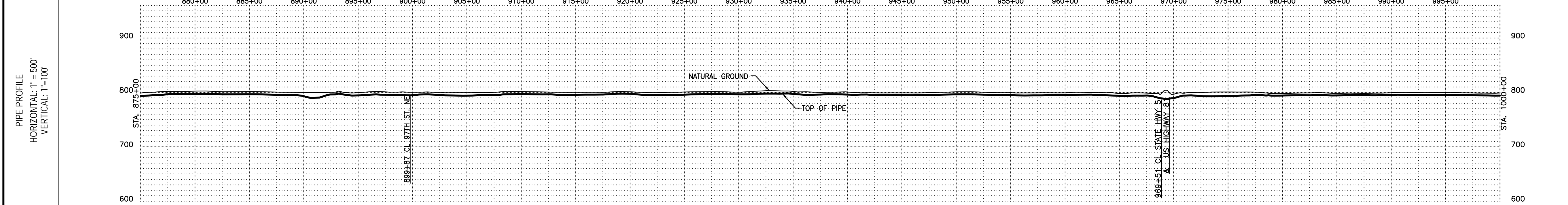
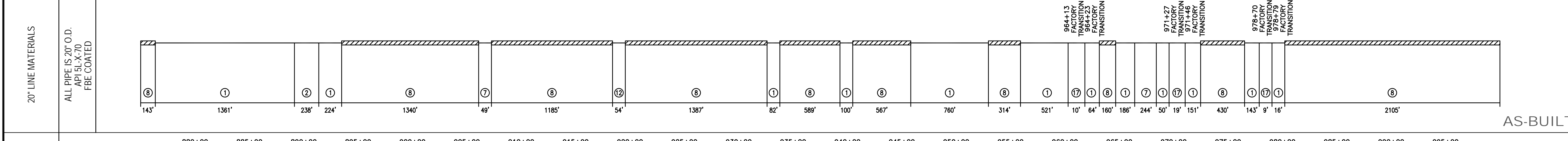


	CIVIL TOWNSHIP LINE
	FOREIGN PIPELINE
	SECTION LINES
	ROADS
	BURIED PHONE LINE
	BURIED POWER LINE
	OVERHEAD POWER LINE
	WATER LINE
	GAS LINE
	FIBER OPTIC CABLE LINE
	SEWER
	PROPERTY LINE
	RAILROADS
	RIVERS, STREAMS, CREEKS, DITCHES

MATERIAL SUMMARY		
ITEM	DESCRIPTION	QTY
1	20.00" O.D. x 0.250" W.T. x API-5L X-70, ERW, 16 MILS FBE	3658
12	20.00" O.D. x 0.312" W.T. x API-5L X-70, ERW, 20 MILS RC	54
17	20.00" O.D. x 0.500" W.T. x API-5L X-70, ERW, 40 MILS FBE	38
2	20.00" O.D. x 0.250" W.T. x API-5L X-70, ERW, 16 MILS/20 MILS FBE/SC	238
7	20.00" O.D. x 0.312" W.T. x API-5L X-70, ERW, 40 MILS ABR	292
8	20.00" O.D. x 0.312" W.T. x API-5L X-70, ERW, 20 MILS/3.5 IN. RC/CC	8220

ABBREVIATIONS		
(L.C.)	LAND CONTRACT	
RRX	RAILROAD CROSSING	
WX	WATER CROSSING	
RX	ROAD CROSSING	
LWA	LOW WET AREA	
WL	WETLAND (SEE WETLAND DELINEATION DRAWINGS REPORT)	
ABR	ABRASION RESISTANT COATING - 40 MILS FBE	
CC	CONCRETE COATING	
FBE	FIBER BOND EPOXY	
RC	ROUGH COATING - 20 MILS FBE	
SC	SACRIFICIAL COATING - 20 MILS SP-2888	

ENVIRONMENTAL	W-790b S-790a	W-790a	W-791d	W-791c	W-791a	W-791b	W-792a S-792a	W-792b
CROSSING INFORMATION	<p>885+99 CROP LINE</p> <p>890+84 CROP LINE</p> <p>896+04 PROPERTY LINE</p> <p>898+46 ROAD R-O-W</p> <p>898+71 TOP OF BANK</p> <p>898+87 SECTION LINE NE</p> <p>898+97 SECTION LINE NE</p> <p>900+05 TOP OF BANK</p> <p>900+17 ROAD LEAD</p> <p>900+33 ROAD R-O-W</p> <p>911+88 6L POWER LINE</p> <p>922+27 OH POWER LINE</p> <p>922+57 OH POWER LINE</p> <p>935+29 P.I. &lt; 7'15.00" LI</p> <p>935+96 SECTION LINE, PROPERTY LINE</p> <p>941+72 P.I. &lt; 6'00.00" RL</p> <p>964+17 P.I. &lt; 35'00.00" RL</p> <p>965+52 BURIED TELEPHONE LINE</p> <p>965+72 BURIED TELEPHONE LINE</p> <p>965+86 TEST LEAD</p> <p>965+97 BURIED TELEPHONE LINE</p> <p>969+46 BURIED TELEPHONE LINE</p> <p>969+51 SECTION LINE S, U.S. HWY 81</p> <p>970+46 ROAD R-O-W</p> <p>971+08 P.I. &lt; 3'15.00" RL</p> <p>971+36 P.I. &lt; 9'00.00" LI</p> <p>974+39 WATER LINE</p> <p>977+53 P.I. &lt; 18'45.00" RL</p> <p>978+30 PROPERTY LINE</p> <p>978+32 OH POWER LINE</p> <p>978+74 P.I. &lt; 30'00.00" RL</p>							



FIELD BOOK	FIELD BOOK	FIELD BOOK
NO.	REFERENCE DRAWINGS	
X	XXXXX	XXX X-XX-XX
NO	REVISION	BY DATE
SCALE	DATE	DRAWN
APPROVED	APPROVED	APPROVED
1" = 500'	5-26-09	RVB
		CMC
		JA
SCALE IN FEET		
<b>GRETNA TO CLEARBROOK</b> 20" LINE 65 STA. 875+00 TO STA. 1000+00 MP 790.3 TO MP 792.7 PEMBINA COUNTY, ND		
DRAWING NUMBER		ROUTE SHEET
D-65-5.92-16457-00-90		008



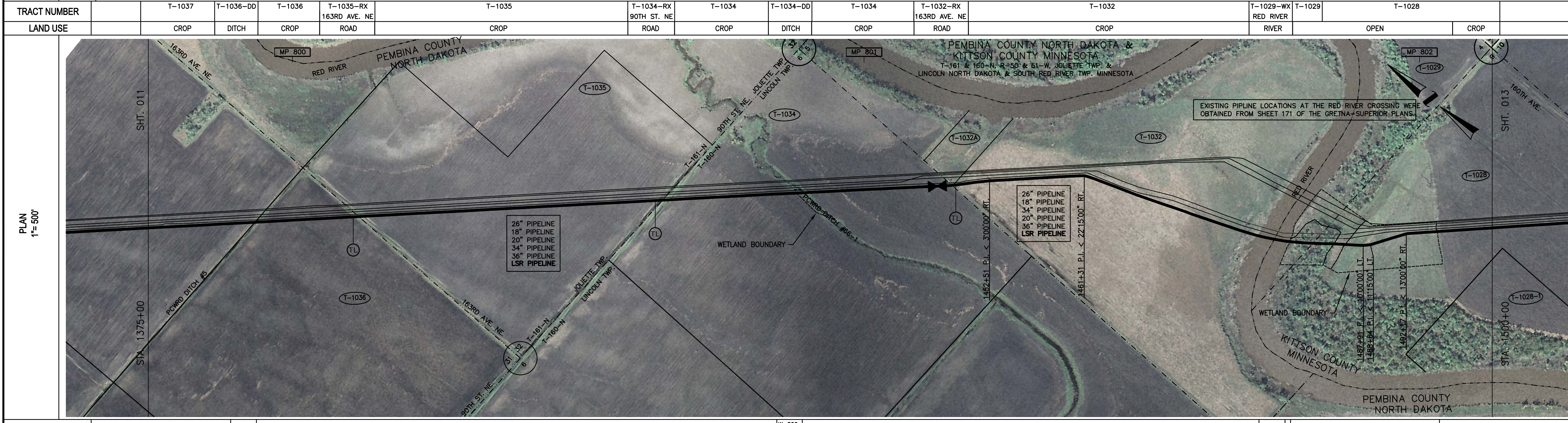




CROSSING INFORMATION	XX" LINE MATERIALS													ALL PIPE IS XX" O.D. "PIPE GRADE" "COATING"		
	TRACT NUMBER	T-1037	T-1036-DD	T-1036	T-1035-RX 163RD AVE. NE	T-1035	T-1034-RX 90TH ST. NE	T-1034	T-1034-DD	T-1034	T-1032-RX 163RD AVE. NE	T-1032	T-1029-WX RED RIVER	T-1029	T-1028	
LAND USE	CROP	DITCH	CROP	ROAD	CROP	ROAD	CROP	DITCH	CROP	ROAD	CROP	RIVER		OPEN	CROP	

**LEGEND**

	INTERSTATE HIGHWAY		M. P. MARKER
	US HIGHWAY		AERIAL M.P. MARKER
	STATE HIGHWAY		ROCK SHIELD
	CO. STATE AID HIGHWAYS		SET ON WEIGHTS
	COUNTY ROAD		CONCRETE COATING
	REPAIR SLEEVE		CASING
	RECTIFIER		MOTOR OPERATED VALVE
	WELD PLUS		GATE VALVE
	TEST LEAD		TEE
			STOPPLE TEE



**MATERIAL SUMMARY**

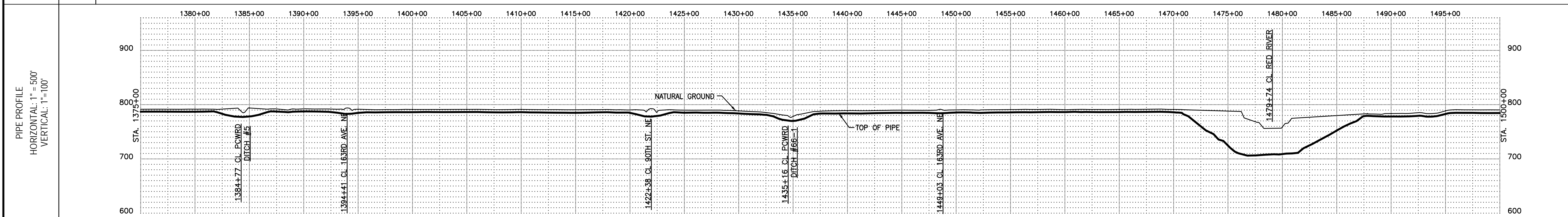
ITEM	DESCRIPTION	QTY
1	20.00" O.D. x 0.250" W.T. x API-5L X-70, ERW, 16 MILS FBE	9308
7	20.00" O.D. x 0.312" W.T. x API-5L X-70, ERW, 40 MILS ABR	597
21	GATE VALVE	1
11	20.00" O.D. x 0.312" W.T. x API-5L X-70, ERW, 16 MILS FBE	40
12	20.00" O.D. x 0.312" W.T. x API-5L X-70, ERW, 20 MILS RC	10
13	20.00" O.D. x 0.375" W.T. x API-5L X-70, ERW, 40 MILS ABR	10
14	20.00" O.D. x 0.375" W.T. x API-5L X-70, N/A, 25-80 MILS PNT-330	9
15	20.00" O.D. x 0.410" W.T. x API-5L X-70, ERW, 40 MILS BARE/SC	11
16	20.00" O.D. x 0.500" W.T. x API-5L X-70, ERW, 40 MILS ABR	1739
2	20.00" O.D. x 0.250" W.T. x API-5L X-70, ERW, 16 MILS/20 MILS FBE/SC	777

**ABBREVIATIONS**

(L.C.) - LAND CONTRACT  
 RRX - RAILROAD CROSSING  
 WX - WATER CROSSING  
 RX - ROAD CROSSING  
 LWA - LOW WET AREA  
 WL - WETLAND (SEE WETLAND DELINEATION DRAWINGS REPORT)  
 ABR - ABRASION RESISTANT COATING - 40 MILS FBE  
 CC - CONCRETE COATING  
 FBE - FIBER BOND EPOXY  
 RC - ROUGH COATING - 20 MILS FBE  
 SC - SACRIFICIAL COATING - 20 MILS SP-2888

ENVIRONMENTAL	S-799a	W-800 S-800c	S-801a	W-801a
---------------	--------	-----------------	--------	--------

CROSSING INFORMATION	20" LINE MATERIALS
<p>1382+82 CROP LINE</p> <p>1384+84 CROP LINE</p> <p>1384+84 TOP OF BANK</p> <p>1384+74 EDGE OF WATER</p> <p>1384+81 PROPERTY LINE</p> <p>1384+80 EDGE OF WATER</p> <p>1385+23 CROP LINE</p> <p>1393+87 TEST LEAD</p> <p>1394+19 CROP LINE</p> <p>1394+19 TOP OF BANK</p> <p>1394+21 CL. 163RD AVE. NE</p> <p>1394+62 TOP OF BANK</p> <p>1394+85 CROP LINE</p> <p>1421+65 OIL POWER LINE</p> <p>1421+68 TEST LEAD</p> <p>1421+70 ROAD R.O.-W</p> <p>1422+37 SECTION LINE</p> <p>1422+36 CL. 90TH ST. NE</p> <p>1422+00 ROAD R.O.-W</p> <p>1423+01 TOP OF BANK</p> <p>1423+08 CROP LINE</p> <p>1434+35 CROP LINE</p> <p>1434+86 TOP OF BANK</p> <p>1435+16 CL. 163RD AVE. NE</p> <p>1435+22 EDGE OF WATER</p> <p>1435+25 OIL POWER DITCH #66-1</p> <p>1435+17 CROP LINE</p> <p>1447+67 MAINLINE VALVE</p> <p>1448+85 CROP LINE</p> <p>1448+89 BURIED TELEPHONE LINE</p> <p>1448+92 SECTION LINE</p> <p>1448+03 CL. 163RD AVE. NE</p> <p>1448+16 TOP OF BANK</p> <p>1448+37 TEST LEAD</p> <p>1448+45 ROAD R.O.-W</p> <p>1450+46 BURIED POWER LINE</p> <p>1452+51 P.I.L. &lt; 3300.00" RT.</p> <p>1461+31 P.I.L. &lt; 2215.00" RT.</p> <p>1478+29 TOP OF BANK</p> <p>1478+75 EDGE OF WATER</p> <p>1479+74 RED RIVER, STATE LINE</p> <p>1480+35 EDGE OF WATER</p> <p>1480+68 TOP OF BANK</p> <p>1481+29 TOP OF BANK</p> <p>1483+32 SECTION LINE, PROPERTY LINE</p> <p>1487+81 P.I.L. &lt; 1000.00" LT.</p> <p>1488+64 P.I.L. &lt; 1115.00" LT.</p> <p>1492+17 P.I.L. &lt; 1300.00" RT.</p> <p>1495+13 CROP LINE</p>	<p>ALL PIPE IS 20" O.D. API 5L-X-70 FBE COATED</p>



FIELD BOOK	FIELD BOOK	FIELD BOOK
NO.	REFERENCE DRAWINGS	
X	xxxxx	xxx X-XX-XX
NO	REVISION	BY DATE
SCALE	DATE	DRAWN
APPROVED	APPROVED	APPROVED

**ENBRIDGE**

**GRETNA TO CLEARBROOK**

20" LINE 65  
 STA. 1375+00 TO STA. 1500+00  
 MP 799.8 TO MP 802.1  
 PEMBINA COUNTY, ND

DRAWING NUMBER: **D-65-5.92-16461-00-92**      ROUTE SHEET: **012**