



**STATE
HISTORICAL
SOCIETY
OF NORTH DAKOTA**

RECEIVED

JUN 23 2008

PUBLIC SERVICE COMMISSION

John Hoeven
Governor of North Dakota

June 19, 2008

North Dakota
State Historical Board

Albert I. Berger
Grand Forks - President

Chester E. Nelson, Jr.
Bismarck - Vice President

Gerold Gerntholz
Valley City - Secretary

A. Ruric Todd III
Jamestown

Diane K. Larson
Bismarck

Marvin L. Kaiser
Williston

Richard Kloubec
Fargo

Sara Otte Coleman
Director
Tourism Division

Kelly Schmidt
State Treasurer

Alvin A. Jaeger
Secretary of State

Douglass Prchal
Director
Parks and Recreation
Department

Francis Ziegler
Director
Department of Transportation

Merlan E. Paaverud, Jr.
Director

Ms. Elizabeth Orlando, Esq.
OES/ENV
Room 2657A
U.S. Department of State
Washington, ND 20520

**ND SHPO REF: 06-1063i Department of State (DOS)/ND PSC
Enbridge Pipelines proposed: Alberta Clipper Petroleum Pipeline EIS
[Pembina County, North Dakota] and Delineation of APE**

Dear Ms. Orlando:

We have received and reviewed DOS correspondence and map coverage of June 18 regarding **06-1063i: Department of State (DOS)/ND PSC Enbridge Pipelines proposed: Alberta Clipper Petroleum Pipeline EIS [Pembina County, North Dakota] and Delineation of APE (140 ft) and other expanded work spaces as delineated in the consultation letter and find them acceptable.**

Thank you for the opportunity to review this project and we accept the invitation to participate in the consultation process. We look forward to reviewing forthcoming documents that treat cultural resources with respect to the project.

Please include the **ND SHPO Ref.: 06-1063** in future correspondence for this project. If you have any questions please contact either Paul Picha at (701) 328-3574 or Susan Quinnell, Review and Compliance Coordinator at (701)328-3576 or squinnell@nd.gov

Sincerely,

Merlan E. Paaverud, Jr.
State Historic Preservation Officer (North Dakota)
and
Director, State Historical Society of North Dakota

54 PU-07-108 Filed: 6/23/2008 Pages: 2
Letter re. June DOS Correspondence and Map Coverage

State Historical Society of North Dakota

Merle Paaverud, SHPO

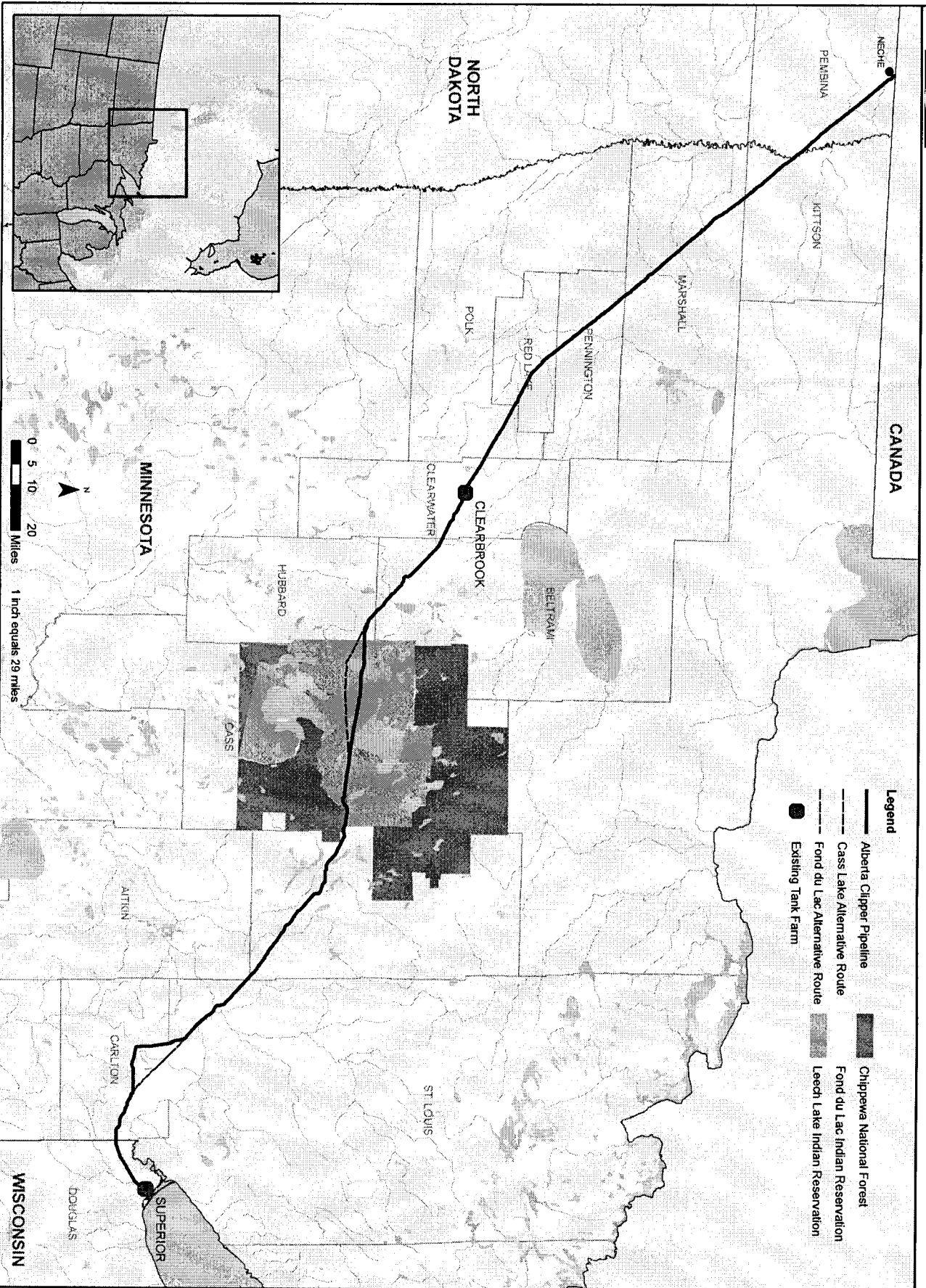
✓ c: Susan E. Wefald, President, Commissioner, ND PSC with map enclosure

Accredited by the
American Association
of Museums



AREA OF POTENTIAL EFFECT FOR THE ENBRIDGE ALBERTA CLIPPER PIPELINE PROJECT

EXHIBIT



PRIVILEGED AND CONFIDENTIAL