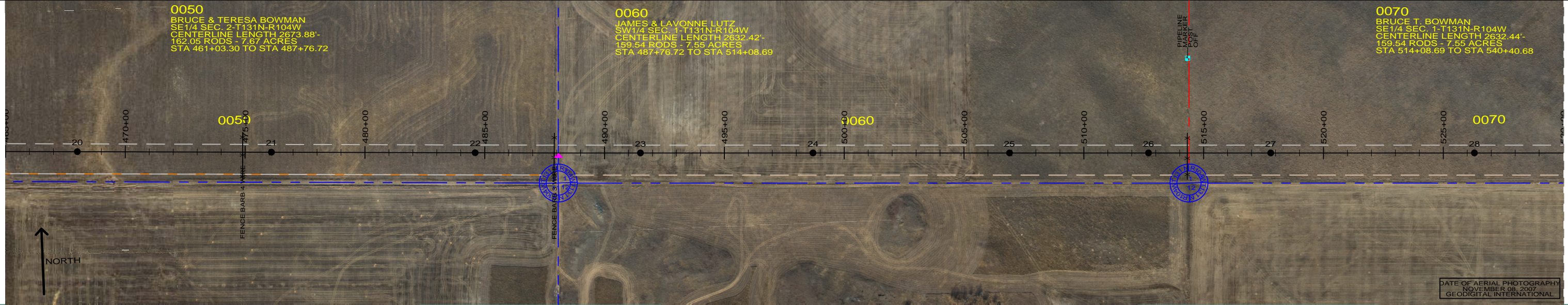


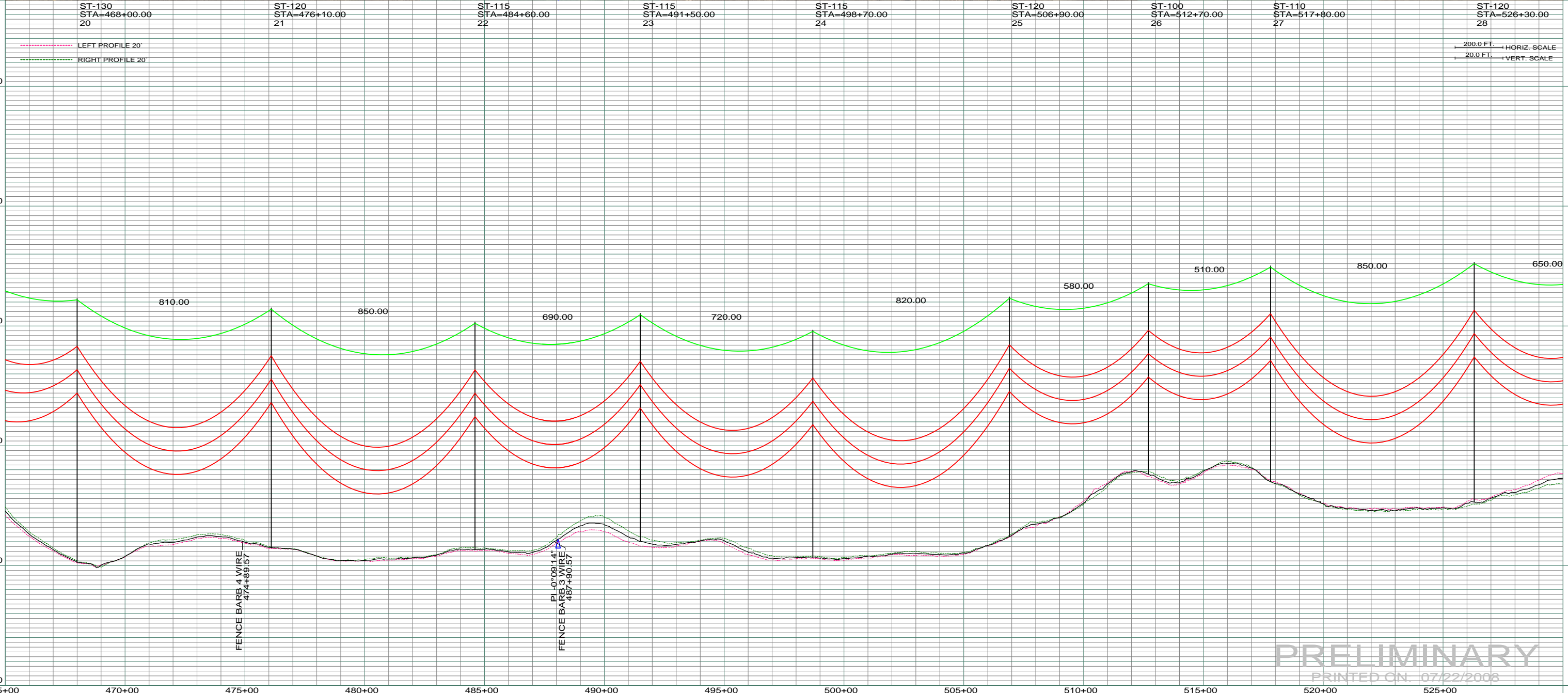
0050
 BRUCE & TERESA BOWMAN
 SE 1/4 SEC. 2-T131N-R104W
 CENTERLINE LENGTH 2673.88'-
 162.05 RODS - 7.67 ACRES
 STA 461+03.30 TO STA 487+76.72

0060
 JAMES & LAVONNE LUTZ
 SW 1/4 SEC. 1-T131N-R104W
 CENTERLINE LENGTH 2632.42'-
 159.54 RODS - 7.55 ACRES
 STA 487+76.72 TO STA 514+08.69

0070
 BRUCE T. BOWMAN
 SE 1/4 SEC. 1-T131N-R104W
 CENTERLINE LENGTH 2632.44'-
 159.54 RODS - 7.55 ACRES
 STA 514+08.69 TO STA 540+40.68



DATE OF AERIAL PHOTOGRAPHY
 NOVEMBER 08, 2007
 GEODIGITAL INTERNATIONAL



PRELIMINARY
 PRINTED ON: 07/22/2008

REV	DESCRIPTION	DRWN	DSGN	APPD	DATE	REV	DESCRIPTION	DRWN	DSGN	APPD	DATE
1	-	-	-	-	-	5					
2	-	-	-	-	-						
3	-	-	-	-	-						
4	-	-	-	-	-						

STATE NAME:	NORTH DAKOTA	ZONE:	3302 SOUTH
DESIGN INFORMATION			
DESIGN BY:	DAM/CDB	DATE:	04/03/08
DRAWN BY:	CDB	DATE:	07/22/2008
DESIGN CHK:	-		
DRAFT CHK:			
APPROVED:			

CONDUCTOR	1272 MCM ACSR <th>STRINGING TENSION</th> <td></td> <th>NESC TENSION</th> <td></td> <th>DESIGN RULING SPAN</th> <td></td> <th>ACTUAL RULING SPAN</th> <td></td>	STRINGING TENSION		NESC TENSION		DESIGN RULING SPAN		ACTUAL RULING SPAN	
OHGW	7/16" E.H.S. STEEL								
OPGW	AC 86/596								

FACILITY:	TRANSMISSION SYSTEM MAINTENANCE
LOCATION UNIT:	181 - RHAME SUB TO BELFIELD SUB - 230 KV LINE
RHAME TO BELFIELD TRANSMISSION PROJECT	
PLAN AND PROFILE	
MILE 4 & 5	

	BASIN ELECTRIC POWER COOPERATIVE 1717 EAST INTERSTATE AVENUE BISMARCK, NORTH DAKOTA PHONE 701-223-0441
	SCALE: AS SHOWN COUNTY NAME: BOWMAN BASIN DRAWING NO. 181-090-T3-005 REV. 0