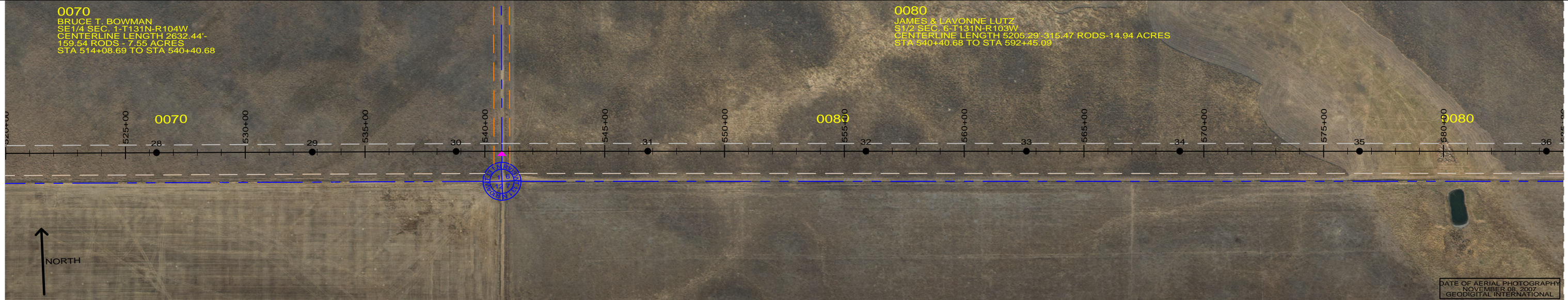


0070
 BRUCE T. BOWMAN
 SE 1/4 SEC. 1-T131N-R104W
 CENTERLINE LENGTH 2632.44'-
 159.54 RODS - 7.55 ACRES
 STA 514+08.69 TO STA 540+40.68

0080
 JAMES & LAVONNE LUTZ
 S 1/2 SEC. 6-T131N-R103W
 CENTERLINE LENGTH 5205.29 - 315.47 RODS - 14.94 ACRES
 STA 540+40.68 TO STA 592+45.09

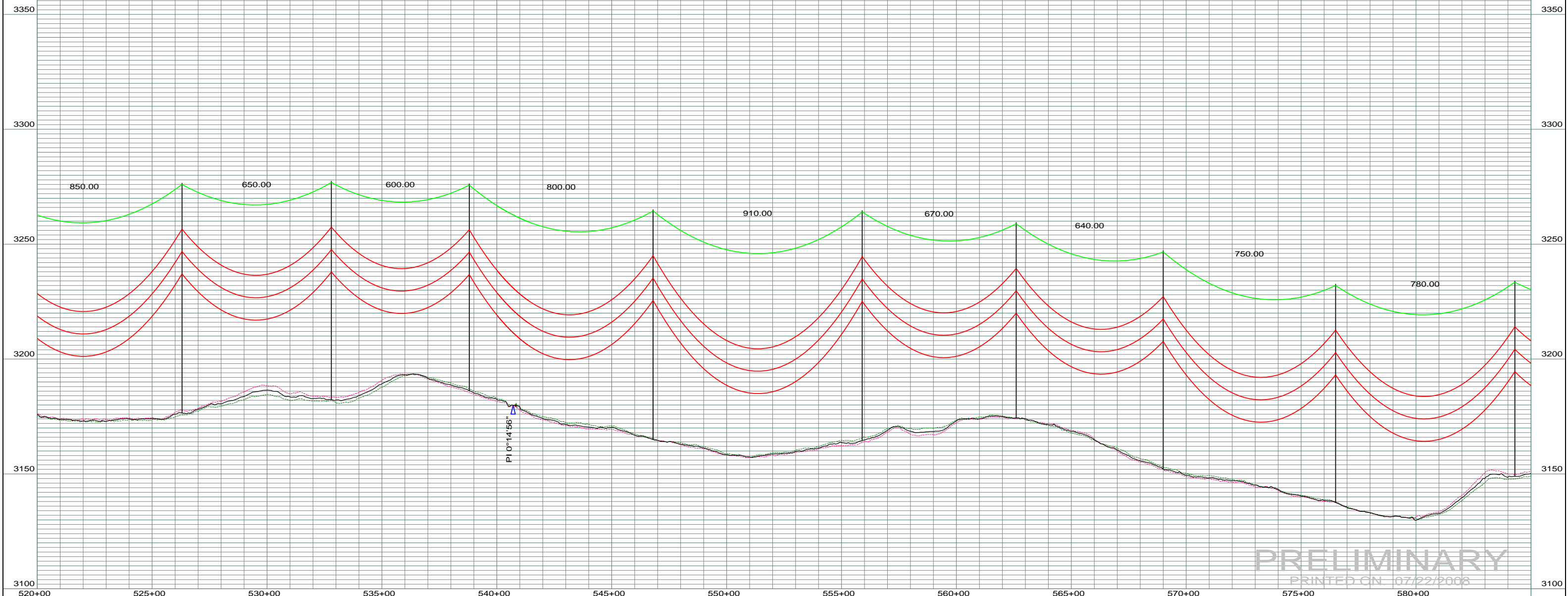


DATE OF AERIAL PHOTOGRAPHY
 NOVEMBER 08, 2007
 GEODIGITAL INTERNATIONAL

ST-120 STA=526+30.00 28	ST-115 STA=532+80.00 29	ST-110 STA=538+80.00 30	ST-120 STA=546+80.00 31	ST-120 STA=555+90.00 32	ST-105 STA=562+60.00 33	ST-115 STA=569+00.00 34	ST-115 STA=576+50.00 35	ST-105 STA=584+30.00 36
-------------------------------	-------------------------------	-------------------------------	-------------------------------	-------------------------------	-------------------------------	-------------------------------	-------------------------------	-------------------------------

--- LEFT PROFILE 20'
 --- RIGHT PROFILE 20'

200.0 FT. HORIZ. SCALE
 20.0 FT. VERT. SCALE



PRELIMINARY
 PRINTED ON 07/22/2008

REV	DESCRIPTION	DRWN	DSGN	APPD	DATE	REV	DESCRIPTION	DRWN	DSGN	APPD	DATE	STATE NAME: NORTH DAKOTA	ZONE: 3302 SOUTH	DESIGN BY: DAM/CDB	04/03/08	FACILITY: TRANSMISSION SYSTEM MAINTENANCE	BASIN ELECTRIC POWER COOPERATIVE 1717 EAST INTERSTATE AVENUE BISMARCK, NORTH DAKOTA PHONE 701-223-0441	
1	-	-	-	-	-	5						DESIGN INFORMATION SIZE STRINGING TENSION NESC TENSION DESIGN RULING SPAN ACTUAL RULING SPAN		DRAWN BY: CDB	07/22/2008	LOCATION UNIT: 181 - RHAME SUB TO BELFIELD SUB - 230 KV LINE		
2	-	-	-	-	-							CONDUCTOR	1272 MCM ACSR	DESIGN CHK: -		RHAME TO BELFIELD TRANSMISSION PROJECT PLAN AND PROFILE MILE 5 & 6		
3	-	-	-	-	-							OHGW	7/16" E.H.S. STEEL	DRAFT CHK:				
4	-	-	-	-	-							OPGW	AC 86/596	APPROVED:		SCALE: AS SHOWN	COUNTY NAME: BOWMAN	
																	BASIN DRAWING NO. 181-090-T3-006	REV. 0