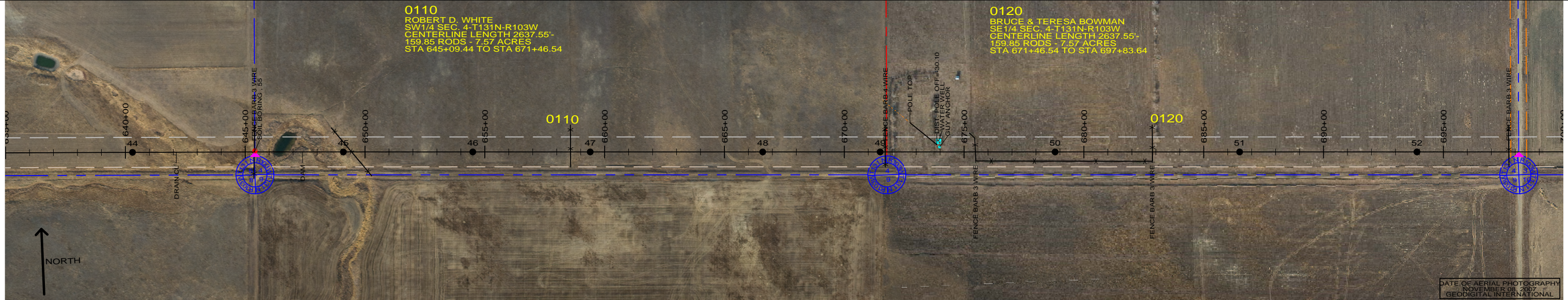
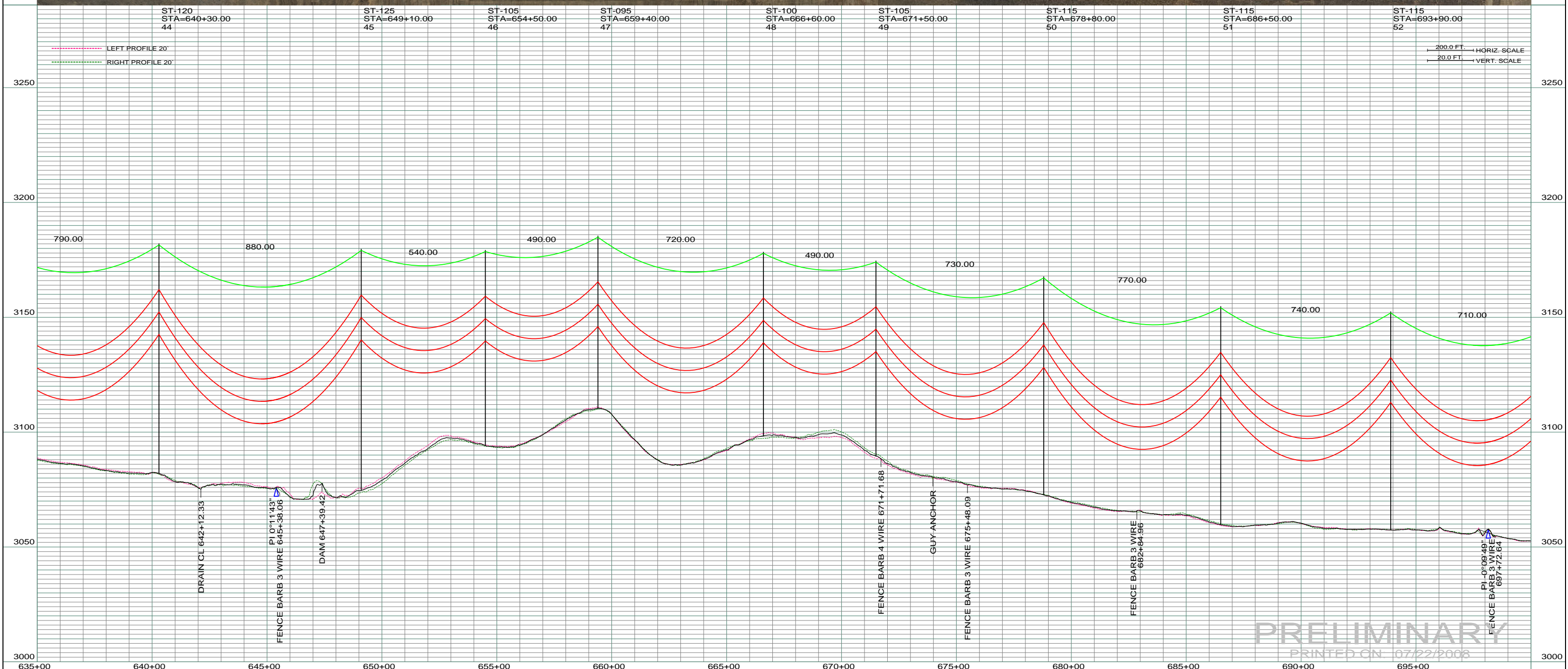


**0110**  
 ROBERT D. WHITE  
 SW 1/4 SEC. 4-T131N-R103W  
 CENTERLINE LENGTH 2637.55'-  
 159.85 RODS - 7.57 ACRES  
 STA 645+09.44 TO STA 671+46.54

**0120**  
 BRUCE & TERESA BOWMAN  
 SE 1/4 SEC. 4-T131N-R103W  
 CENTERLINE LENGTH 2637.55'-  
 159.85 RODS - 7.57 ACRES  
 STA 671+46.54 TO STA 697+83.64



DATE OF AERIAL PHOTOGRAPHY  
 NOVEMBER 08, 2007  
 GEODIGITAL INTERNATIONAL



**PRELIMINARY**  
 PRINTED ON 07/22/2008

REV	DESCRIPTION	DRWN	DSGN	APPD	DATE	REV	DESCRIPTION	DRWN	DSGN	APPD	DATE
1	-	-	-	-	-	5					
2	-	-	-	-	-						
3	-	-	-	-	-						
4	-	-	-	-	-						

STATE NAME:	NORTH DAKOTA	ZONE:	3302 SOUTH
<b>DESIGN INFORMATION</b>			
CONDUCTOR	1272 MCM ACSR	STRINGING TENSION	NESC TENSION
OHGW	7/16" E.H.S. STEEL	DESIGN RULING SPAN	ACTUAL RULING SPAN
OPGW	AC 86/596		

DESIGN BY:	DAM/CDB	04/03/08	FACILITY:	TRANSMISSION SYSTEM MAINTENANCE
DRAWN BY:	CDB	07/22/2008	LOCATION UNIT:	181 - RHAME SUB TO BELFIELD SUB - 230 KV LINE
DESIGN CHK:	-		<b>RHAME TO BELFIELD TRANSMISSION PROJECT</b>	
DRAFT CHK:				
APPROVED:				

SCALE:	AS SHOWN	COUNTY NAME:	BOWMAN
BASIN DRAWING NO.	181-090-T3-008	REV.	0