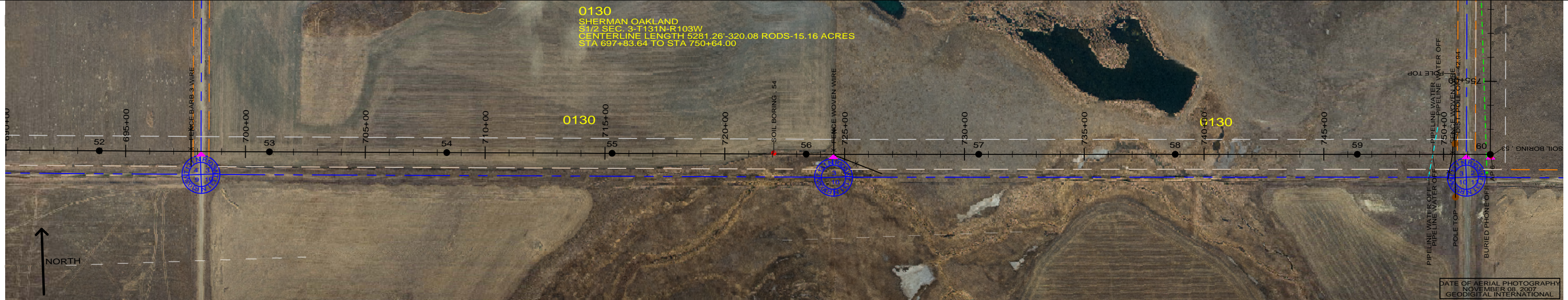
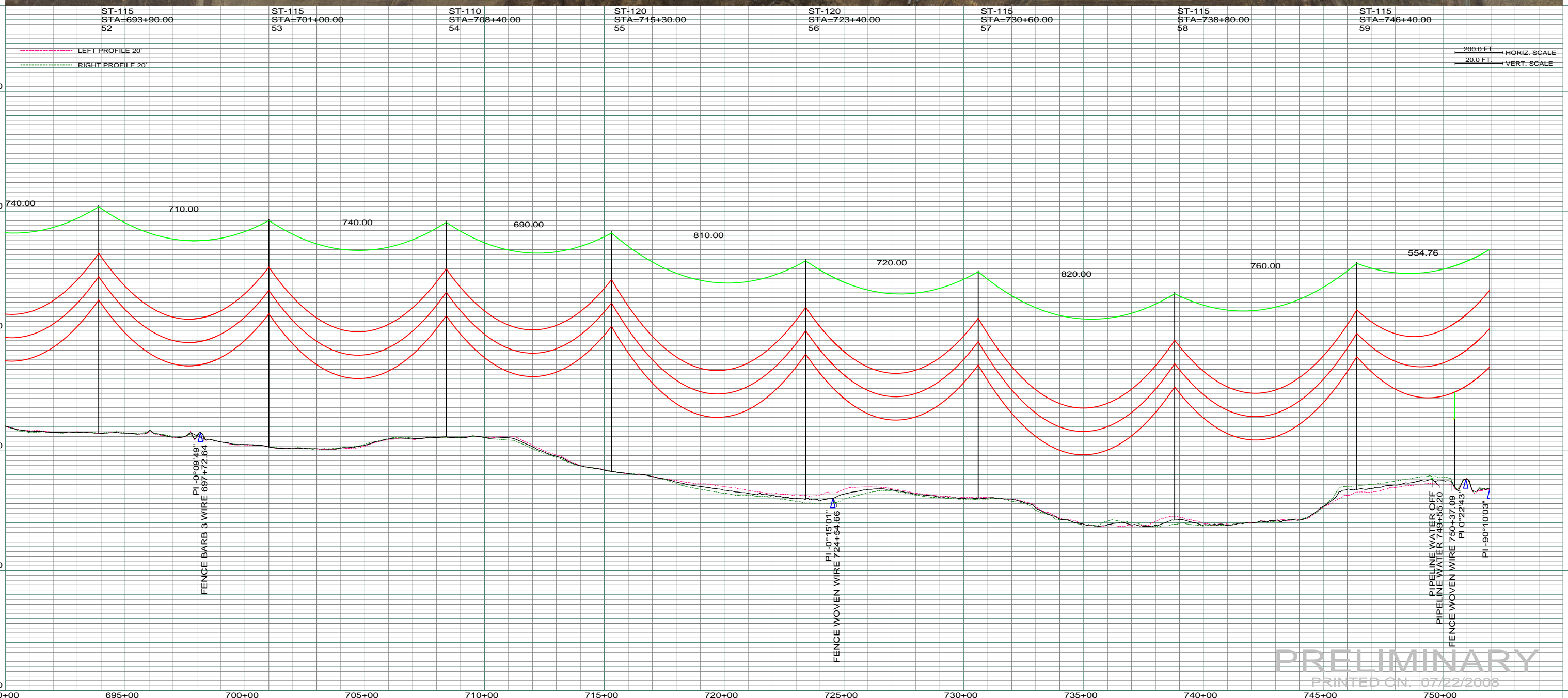


0130  
 SHERMAN OAKLAND  
 S1/2 SEC. 3-T131N-R103W  
 CENTERLINE LENGTH 5281.26'-320.08 RODS-15.16 ACRES  
 STA 697+83.64 TO STA 750+64.00



DATE OF AERIAL PHOTOGRAPHY  
 NOVEMBER 08, 2007  
 GEODIGITAL INTERNATIONAL



**PRELIMINARY**  
 PRINTED ON: 07/22/2008

REV	DESCRIPTION	DRWN	DSGN	APPD	DATE	REV	DESCRIPTION	DRWN	DSGN	APPD	DATE
1	-	-	-	-	-	5	-	-	-	-	-
2	-	-	-	-	-	-	-	-	-	-	-
3	-	-	-	-	-	-	-	-	-	-	-
4	-	-	-	-	-	-	-	-	-	-	-

STATE NAME:	ZONE:	DESIGN BY:	DATE:	FACILITY:	
NORTH DAKOTA	3302 SOUTH	DAM/CDB	04/03/08	TRANSMISSION SYSTEM MAINTENANCE	
DESIGN INFORMATION					
CONDUCTOR	SIZE	STRINGING TENSION	NESC TENSION	DESIGN RULING SPAN	ACTUAL RULING SPAN
	1272 MCM ACSR				
OHGW	7/16" E.H.S. STEEL				
OPGW	AC 86/596				

DRAWN BY:	DATE:	DESIGN CHK:	DRAFT CHK:	APPROVED:
CDB	07/22/2008	-	-	-

LOCATION UNIT:	SCALE:	COUNTY NAME:
181 - RHAME SUB TO BELFIELD SUB - 230 KV LINE	AS SHOWN	BOWMAN
RHAME TO BELFIELD TRANSMISSION PROJECT		
PLAN AND PROFILE		
MILE 8 & 9		

BASIN DRAWING NO.	REV.
181-090-T3-009	0