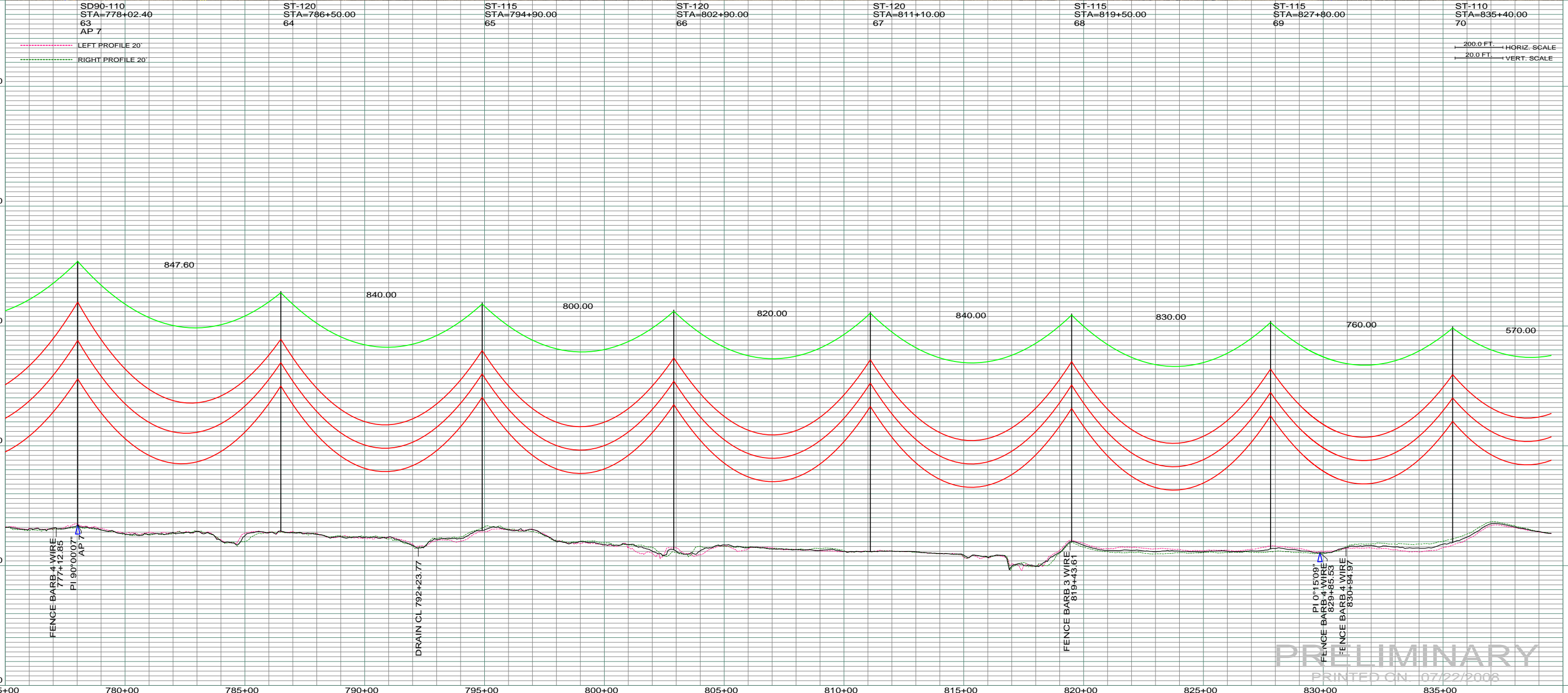


0150
 RONALD & ORPHA BOWMAN
 S1/2N1/2 SEC. 2, T131N, R103W
 CENTERLINE LENGTH 5247.22 - 318.01 RODS - 15.06 ACRES
 STA 777+09.13 TO STA 829+55.46



DATE OF AERIAL PHOTOGRAPHY
 NOVEMBER 08, 2007
 GEODIGITAL INTERNATIONAL



200.0 FT. HORIZ. SCALE
 20.0 FT. VERT. SCALE

PRELIMINARY
 PRINTED ON 07/22/2008

REV	DESCRIPTION	DRWN	DSGN	APPD	DATE	REV	DESCRIPTION	DRWN	DSGN	APPD	DATE	STATE NAME: NORTH DAKOTA ZONE: 3302 SOUTH		DESIGN BY: DAM/CDB	04/03/08	FACILITY: TRANSMISSION SYSTEM MAINTENANCE		BASIN ELECTRIC POWER COOPERATIVE 1717 EAST INTERSTATE AVENUE BISMARCK, NORTH DAKOTA PHONE 701-223-0441	
1	-	-	-	-	-	5							DESIGN INFORMATION		LOCATION UNIT: 181 - RHAME SUB TO BELFIELD SUB - 230 KV LINE		SCALE: AS SHOWN COUNTY NAME: BOWMAN		
2	-	-	-	-	-							CONDUCTOR	1272 MCM ACSR	STRINGING TENSION	NESC TENSION	DESIGN RULING SPAN			ACTUAL RULING SPAN
3	-	-	-	-	-							OHGW	7/16" E.H.S. STEEL						BASIN DRAWING NO. 181-090-T3-011 REV. 0
4	-	-	-	-	-							OPGW	AC 86/596						