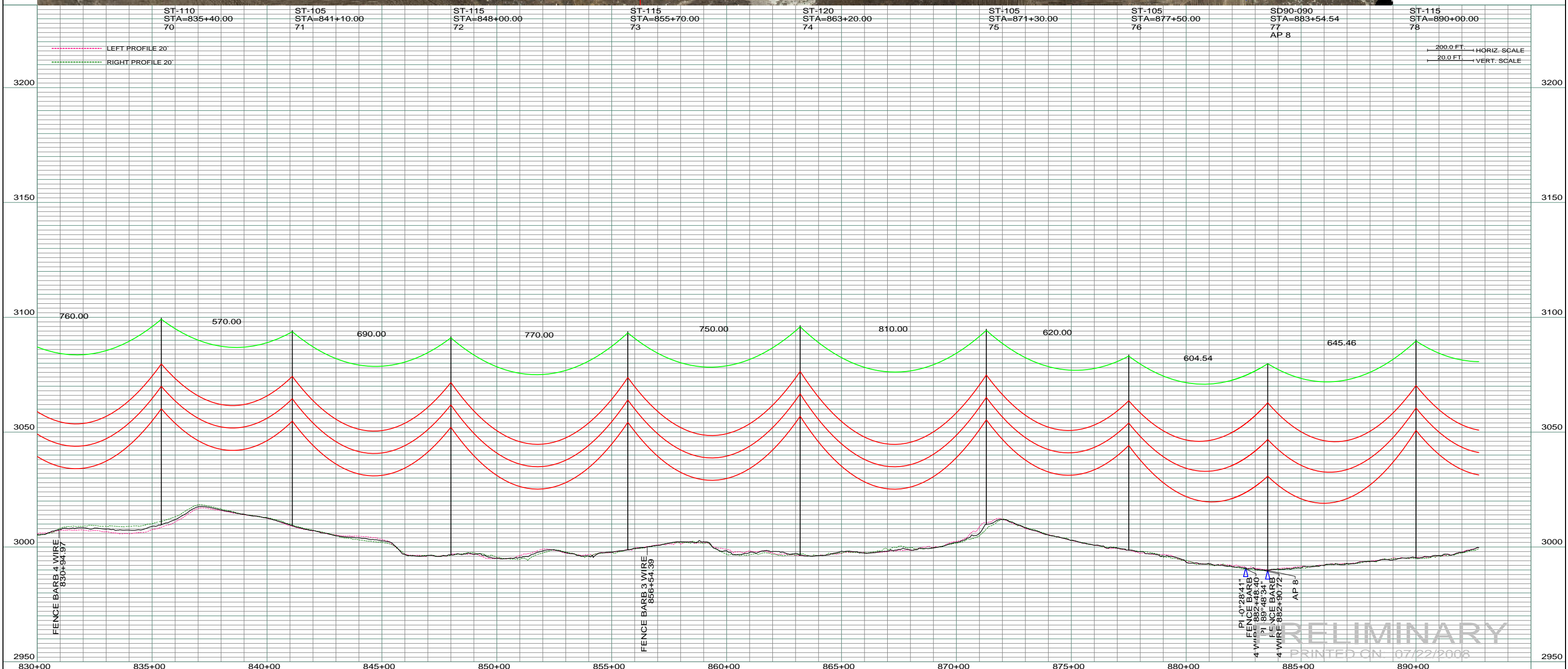
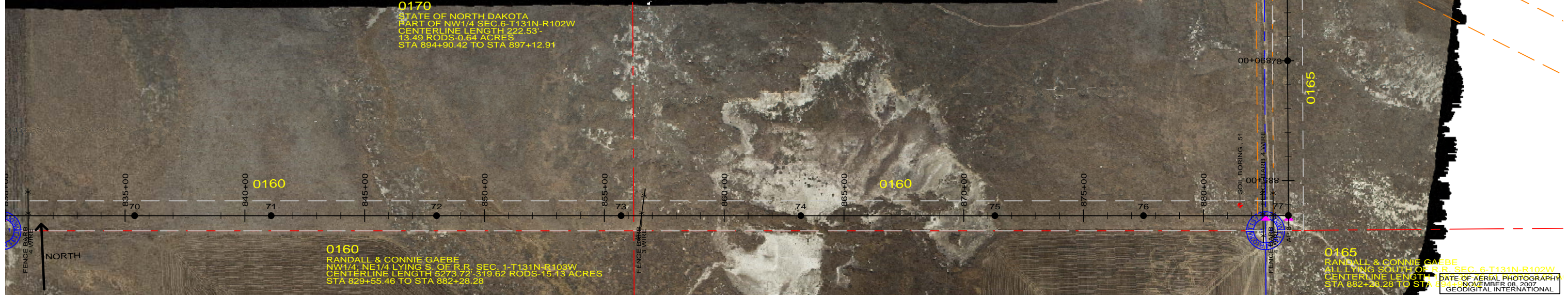


0170
 STATE OF NORTH DAKOTA
 PART OF NW1/4 SEC. 6-T131N-R102W
 CENTERLINE LENGTH 222.53'-
 13.49 RODS-0.64 ACRES
 STA 894+90.42 TO STA 897+12.91

0160
 RANDALL & CONNIE GAEBE
 NW1/4, NE1/4 LYING S. OF R.R. SEC. 1-T131N-R103W
 CENTERLINE LENGTH 5273.72-319.62 RODS-15.13 ACRES
 STA 829+55.46 TO STA 882+28.28

0165
 RANDALL & CONNIE GAEBE
 ALL LYING SOUTH OF R.R. SEC. 6-T131N-R102W
 CENTERLINE LENGTH 1346.90-1346.90 RODS-0.61 ACRES
 STA 894+90.42 TO STA 897+12.91
 DATE OF AERIAL PHOTOGRAPHY
 NOVEMBER 08, 2007
 GEODIGITAL INTERNATIONAL



REV	DESCRIPTION	DRWN	DSGN	APPD	DATE	REV	DESCRIPTION	DRWN	DSGN	APPD	DATE
1		-	-	-	-	5					
2		-	-	-	-						
3		-	-	-	-						
4		-	-	-	-						

STATE NAME: NORTH DAKOTA	ZONE: 3302 SOUTH	DESIGN BY: DAM/CDB	04/03/08	FACILITY: TRANSMISSION SYSTEM MAINTENANCE
DESIGN INFORMATION		DRAWN BY: CDB	07/22/2008	LOCATION UNIT: 181 - RHAME SUB TO BELFIELD SUB - 230 KV LINE
CONDUCTOR	SIZE: 1272 MCM ACSR	STRINGING TENSION	DESIGN RULING SPAN	ACTUAL RULING SPAN
OHGW	7/16" E.H.S. STEEL	NEST TENSION		
OPGW	AC 86/596			
DESIGN CHECK: -		RHHAME TO BELFIELD TRANSMISSION PROJECT		
DRAFT CHECK: -		SCALE: AS SHOWN COUNTY NAME: BOWMAN		
APPROVED: -		BASIN DRAWING NO. 181-090-T3-012 REV. 0		