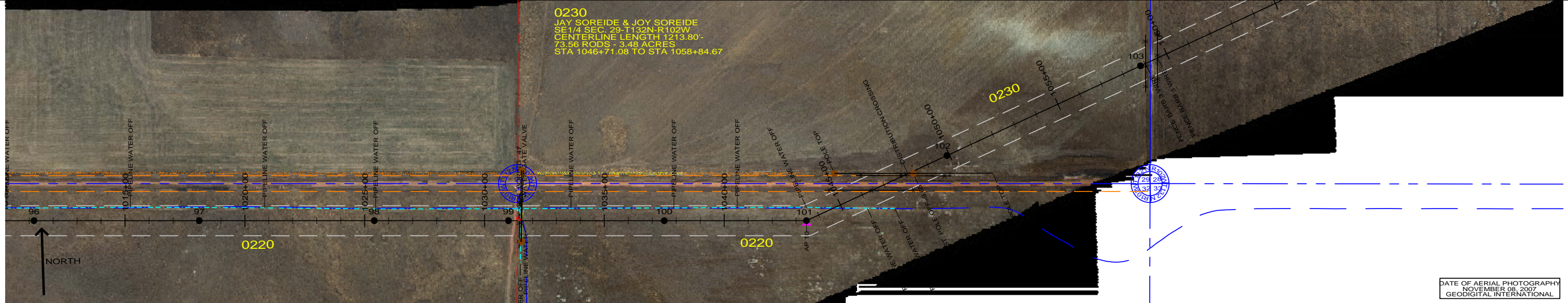


0230
 JAY SOREIDE & JOY SOREIDE
 SE1/4 SEC. 29-T132N-R102W
 CENTERLINE LENGTH 1213.80'
 73.56 RODS - 3.48 ACRES
 STA 1046+71.08 TO STA 1058+84.67

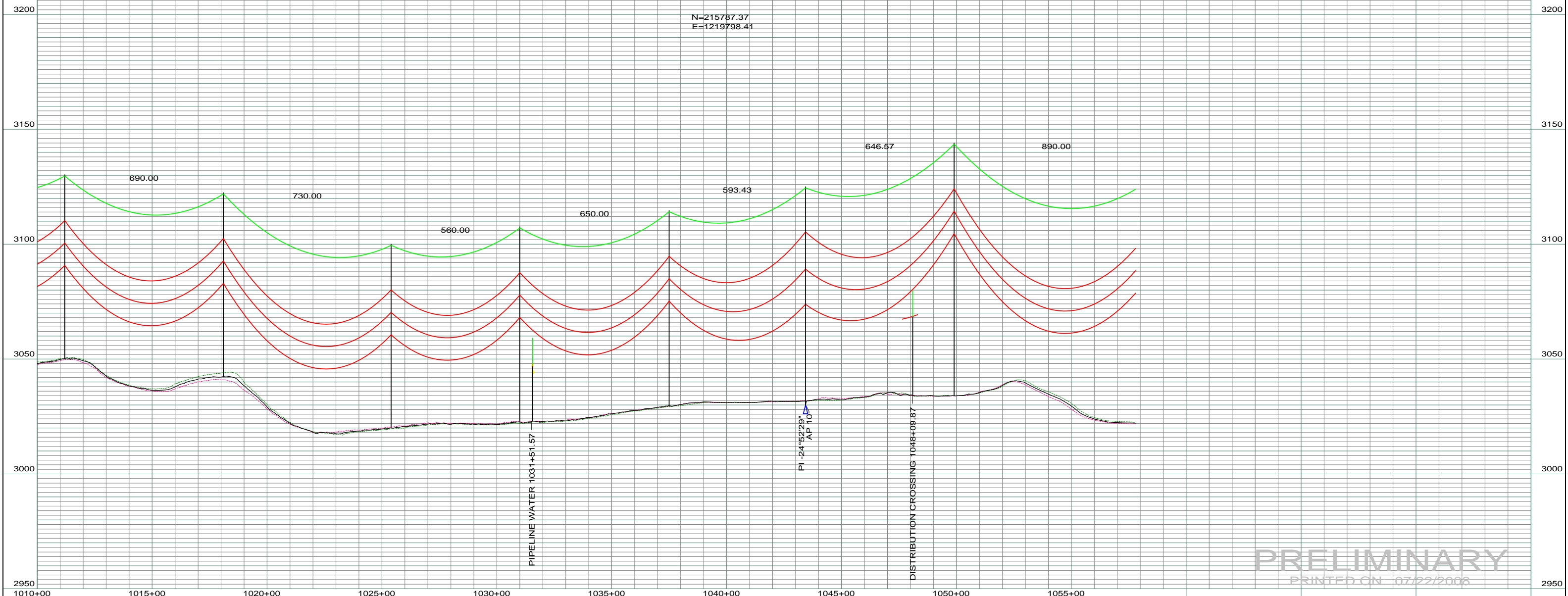


DATE OF AERIAL PHOTOGRAPHY
 NOVEMBER 08, 2007
 GEODIGITAL INTERNATIONAL

ST-100 STA=1011+20.00 96	ST-100 STA=1018+10.00 97	ST-100 STA=1025+40.00 98	ST-105 STA=1031+00.00 99	ST-105 STA=1037+50.00 100	SA28-095 STA=1043+43.43 101 AP 10	ST-130 STA=1049+90.00 102
--------------------------------	--------------------------------	--------------------------------	--------------------------------	---------------------------------	--	---------------------------------

--- LEFT PROFILE 20'
 --- RIGHT PROFILE 20'

200.0 FT. HORIZ. SCALE
 20.0 FT. VERT. SCALE



N=215787.37
 E=1219798.41

PRELIMINARY
 PRINTED ON 07/22/2008

REV	DESCRIPTION	DRWN	DSGN	APPD	DATE	REV	DESCRIPTION	DRWN	DSGN	APPD	DATE	STATE NAME: NORTH DAKOTA	ZONE: 3302 SOUTH	DESIGN BY: DAM/CDB	04/03/08	FACILITY: TRANSMISSION SYSTEM MAINTENANCE	1717 EAST INTERSTATE AVENUE BISMARCK, NORTH DAKOTA PHONE 701-223-0441	SCALE: AS SHOWN	COUNTY NAME: BOWMAN
1	-	-	-	-	-	5						CONDUCTOR	1272 MCM ACSR	STRINGING TENSION	NESC TENSION	DESIGN RULING SPAN	ACTUAL RULING SPAN	DESIGN CHK: -	
2	-	-	-	-	-							OHGW	7/16" E.H.S. STEEL					DRAFT CHK:	
3	-	-	-	-	-							OPGW	AC 86/596					APPROVED:	
4	-	-	-	-	-														

181 - RHAME SUB TO BELFIELD SUB - 230 KV LINE
 RHAME TO BELFIELD TRANSMISSION PROJECT
 PLAN AND PROFILE
 MILE 15 & 16

SCALE: AS SHOWN
 BASIN DRAWING NO. 181-090-T3-016
 COUNTY NAME: BOWMAN
 REV. 0