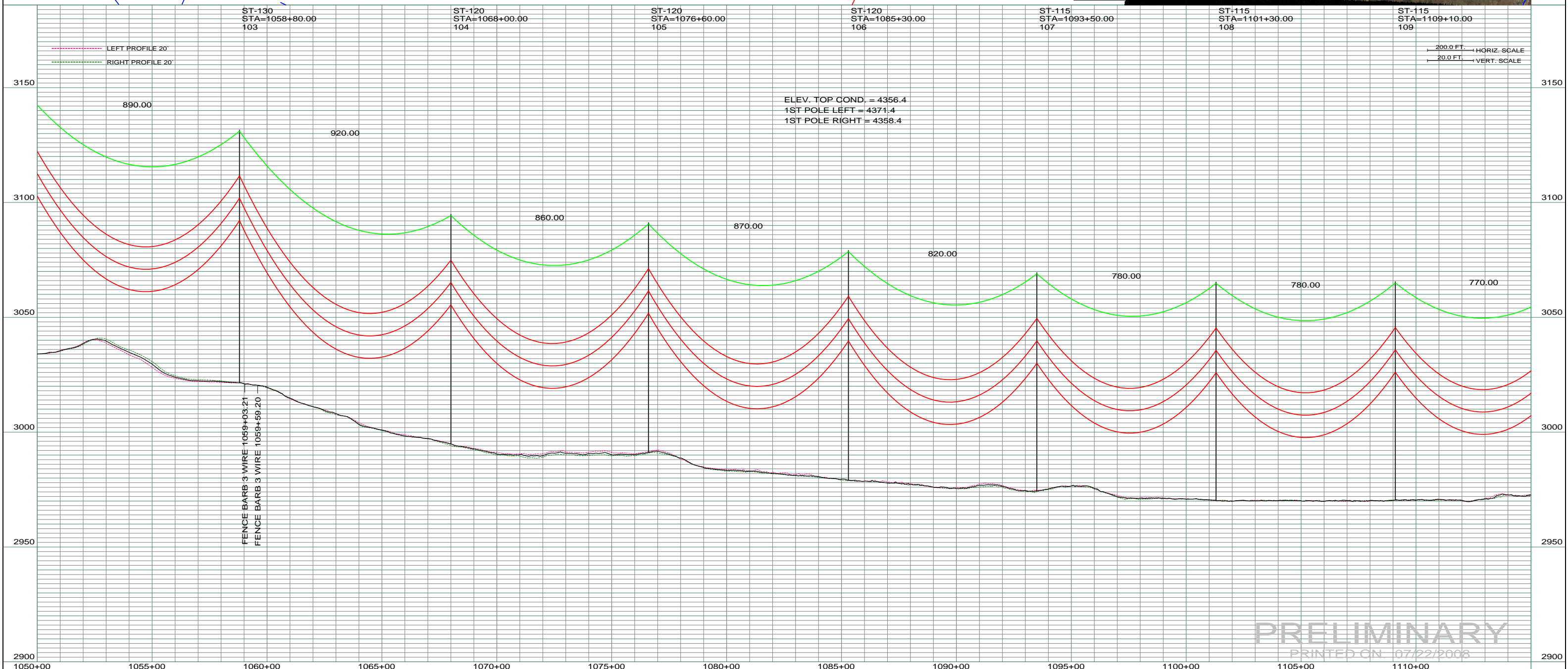
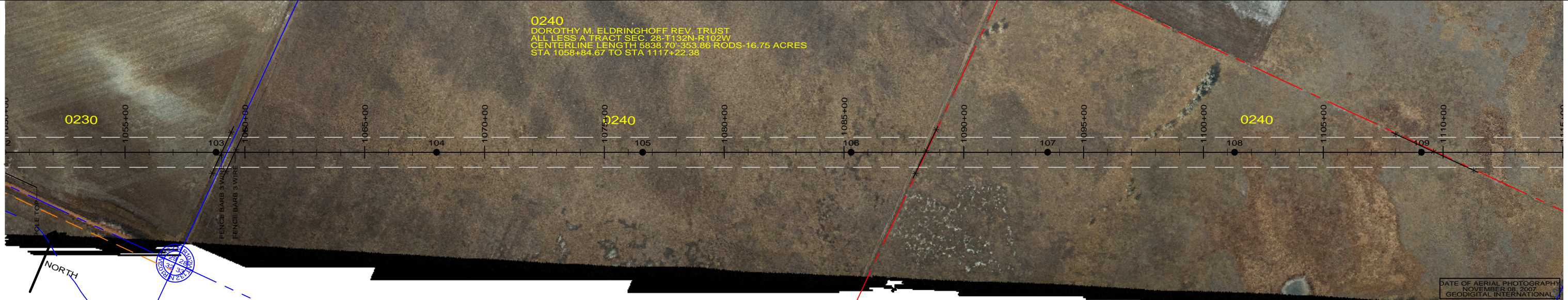


0240
 DOROTHY M. ELDRINGHOFF REV. TRUST
 ALL LESS A TRACT SEC. 28-T132N-R102W
 CENTERLINE LENGTH 5838.70'-353.86 RODS-16.75 ACRES
 STA 1058+84.67 TO STA 1117+22.38



PRELIMINARY
 PRINTED ON: 07/22/2008

REV	DESCRIPTION	DRWN	DSGN	APPD	DATE	REV	DESCRIPTION	DRWN	DSGN	APPD	DATE	STATE NAME: NORTH DAKOTA	ZONE: 3302 SOUTH	DESIGN BY: DAM/CDB	04/03/08	FACILITY: TRANSMISSION SYSTEM MAINTENANCE	LOCATION UNIT: 181 - RHAME SUB TO BELFIELD SUB - 230 KV LINE	BASIN ELECTRIC POWER COOPERATIVE 1717 EAST INTERSTATE AVENUE BISMARCK, NORTH DAKOTA PHONE 701-223-0441		
1	-	-	-	-	-	5						DESIGN INFORMATION			DRAWN BY: CDB 07/22/2008		RHAME TO BELFIELD TRANSMISSION PROJECT PLAN AND PROFILE MILE 16 & 17	SCALE: AS SHOWN	COUNTY NAME: BOWMAN	
2	-	-	-	-	-							CONDUCTOR	1272 MCM ACSR	STRINGING TENSION	NESC TENSION	DESIGN RULING SPAN		ACTUAL RULING SPAN	DESIGN CHK: -	REV.
3	-	-	-	-	-							OHGW	7/16" E.H.S. STEEL						DRAFT CHK:	181-090-T3-017
4	-	-	-	-	-							OPGW	AC 86/596						APPROVED:	0