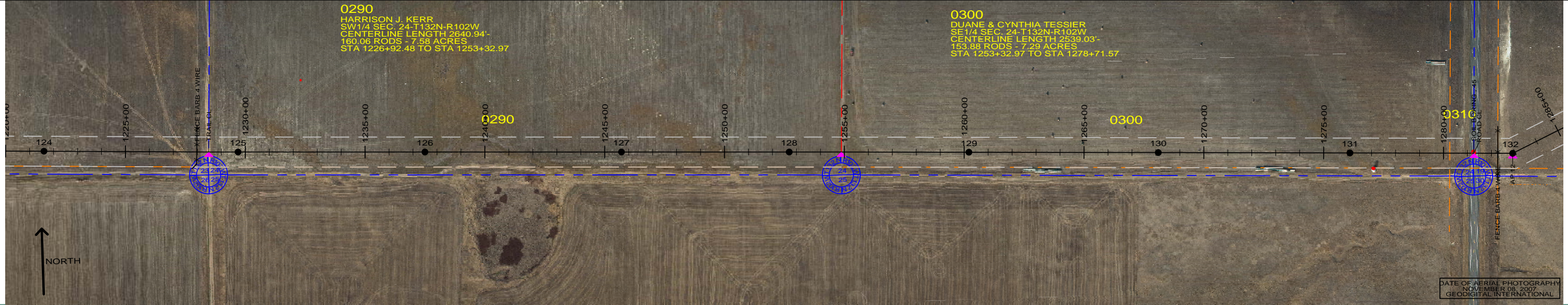


0290
 HARRISON J. KERR
 SW 1/4 SEC. 24-T132N-R102W
 CENTERLINE LENGTH 2640.94'-
 160.06 RODS - 7.58 ACRES
 STA 1226+92.48 TO STA 1253+32.97

0300
 DUANE & CYNTHIA TESSIER
 SE 1/4 SEC. 24-T132N-R102W
 CENTERLINE LENGTH 2539.03'-
 153.88 RODS - 7.29 ACRES
 STA 1253+32.97 TO STA 1278+71.57

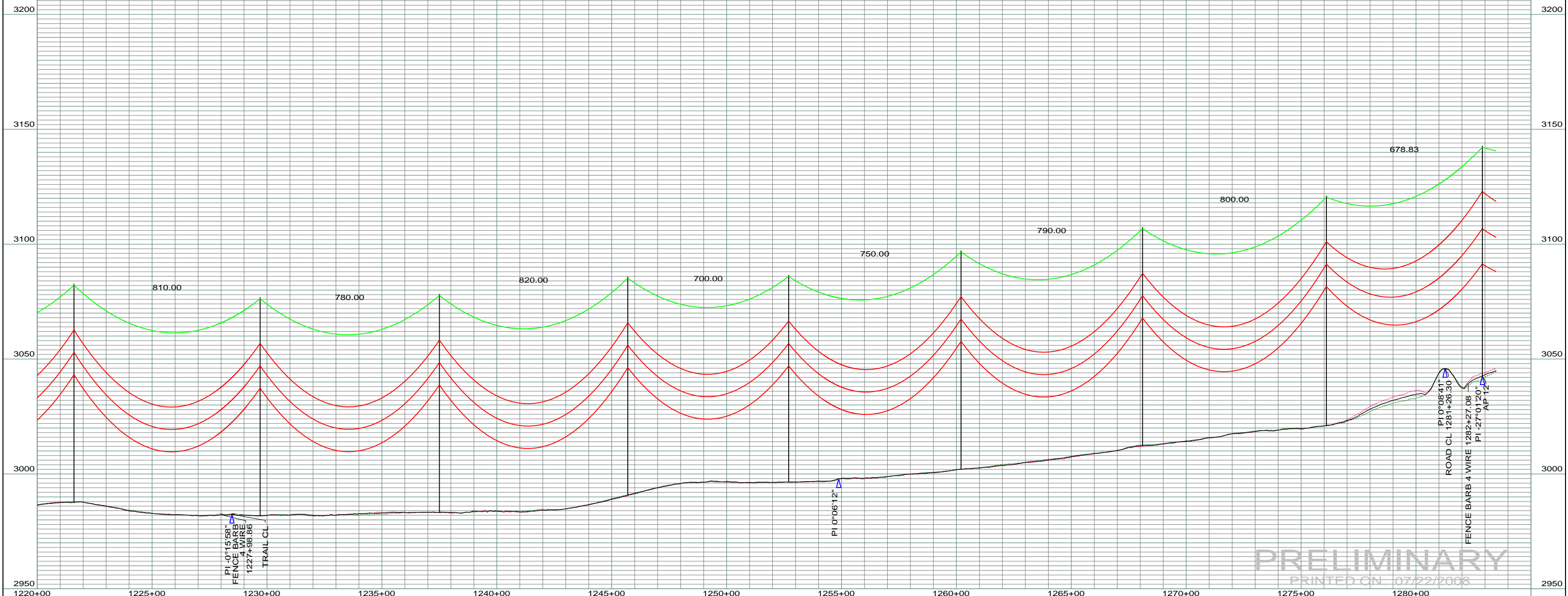


DATE OF AERIAL PHOTOGRAPHY
 NOVEMBER 08, 2007
 GEODIGITAL INTERNATIONAL

ST-115 STA=1221+60.00 124	ST-115 STA=1229+70.00 125	ST-115 STA=1237+50.00 126	ST-115 STA=1245+70.00 127	ST-110 STA=1252+70.00 128	ST-115 STA=1260+20.00 129	ST-115 STA=1268+10.00 130	ST-120 STA=1276+10.00 131	SA28-100 STA=1282+88.83 132 AP 12
---------------------------------	---------------------------------	---------------------------------	---------------------------------	---------------------------------	---------------------------------	---------------------------------	---------------------------------	--

--- LEFT PROFILE 20'
 --- RIGHT PROFILE 20'

200.0 FT. --- HORIZ. SCALE
 20.0 FT. --- VERT. SCALE



PRELIMINARY
 PRINTED ON 07/22/2008

REV	DESCRIPTION	DRWN	DSGN	APPD	DATE	REV	DESCRIPTION	DRWN	DSGN	APPD	DATE
1	-	-	-	-	-	5					
2	-	-	-	-	-						
3	-	-	-	-	-						
4	-	-	-	-	-						

STATE NAME: NORTH DAKOTA		ZONE: 3302 SOUTH		DESIGN BY: DAM/CDB	04/03/08	FACILITY: TRANSMISSION SYSTEM MAINTENANCE	
DESIGN INFORMATION				DRAWN BY: CDB	07/22/2008	LOCATION UNIT: 181 - RHAME SUB TO BELFIELD SUB - 230 KV LINE	
CONDUCTOR	SIZE	STRINGING TENSION	NESC TENSION	DESIGN RULING SPAN	ACTUAL RULING SPAN	RHAME TO BELFIELD TRANSMISSION PROJECT	
	1272 MCM ACSR					SCALE: AS SHOWN	
	OHGW 7/16" E.H.S. STEEL					COUNTY NAME: BOWMAN	
	OPGW AC 86/596					BASIN DRAWING NO. 181-90-T3-020	
APPROVED:						REV. 0	