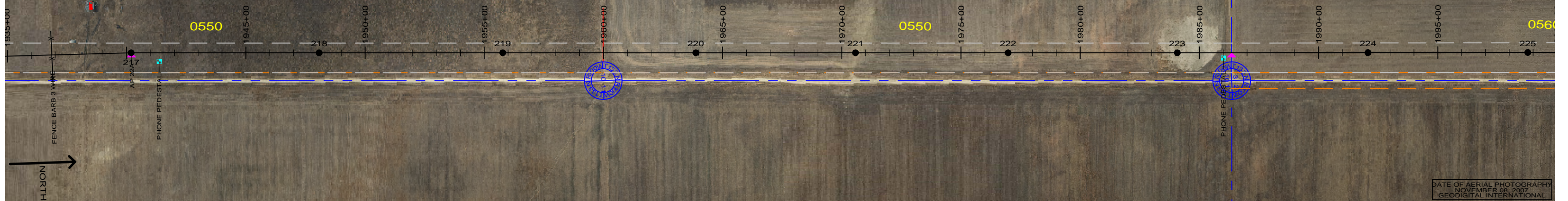


0550
 DAVID SONSALLA
 E 1/2 SEC - 10-T-133N-R100W
 CENTERLINE LENGTH 5273.51'-
 319.61 RODS-15.13 ACRES
 STA 1916+14.84 TO STA 1968+87.45

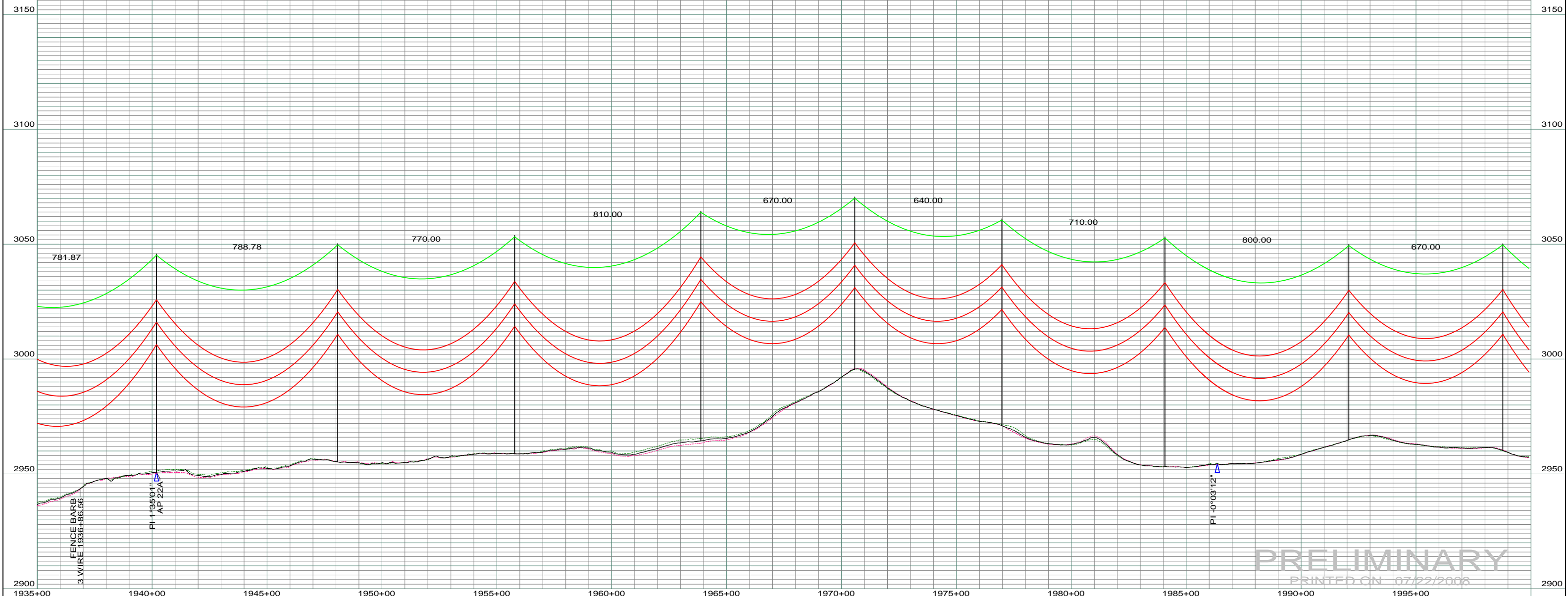


DATE OF AERIAL PHOTOGRAPH
 NOVEMBER 08, 2007
 GEODIGITAL INTERNATIONAL

ST-115 STA=1940+18.86 217	ST-115 STA=1948+07.64 218	ST-115 STA=1955+77.64 219	ST-120 STA=1963+87.64 220	ST-095 STA=1970+57.64 221	ST-110 STA=1976+97.64 222	ST-120 STA=1984+07.64 223	ST-105 STA=1992+07.64 224	ST-110 STA=1998+77.64 225
---------------------------------	---------------------------------	---------------------------------	---------------------------------	---------------------------------	---------------------------------	---------------------------------	---------------------------------	---------------------------------

LEFT PROFILE 20'
 RIGHT PROFILE 20'

200.0 FT. HORIZ. SCALE
 20.0 FT. VERT. SCALE



PRELIMINARY
 PRINTED ON 07/22/2008

REV	DESCRIPTION	DRWN	DSGN	APPD	DATE	REV	DESCRIPTION	DRWN	DSGN	APPD	DATE	STATE NAME: NORTH DAKOTA	ZONE: 3302 SOUTH	DESIGN BY: DAM/CDB	04/03/08	FACILITY: TRANSMISSION SYSTEM MAINTENANCE	BASIN ELECTRIC POWER COOPERATIVE 1717 EAST INTERSTATE AVENUE BISMARCK, NORTH DAKOTA PHONE 701-223-0441	COUNTY NAME: SLOPE SCALE: AS SHOWN BASIN DRAWING NO. 181-90-T3-035 REV. 0
1	-	-	-	-	5							DESIGN INFORMATION		LOCATION UNIT: 181 - RHAME SUB TO BELFIELD SUB - 230 KV LINE				
2	-	-	-	-	-							CONDUCTOR	SIZE: 1272 MCM ACSR	STRINGING TENSION	DESIGN RULING SPAN	ACTUAL RULING SPAN		
3	-	-	-	-	-							OHGW	7/16" E.H.S. STEEL	OPGW	AC 86/596	DESIGN CHK: -		
4	-	-	-	-	-									APPROVED:		RHAME TO BELFIELD TRANSMISSION PROJECT		PLAN AND PROFILE