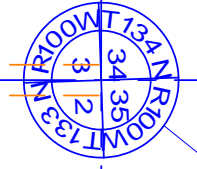


0560
 ROCKY W. BURK
 FRED & RENE BURK
 SE 1/4 SEC. 3-T133N-R100W
 CENTERLINE LENGTH 2644.56'-
 160.28 RODS-7.59 ACRES
 STA 1988+87.45 TO STA 1995+31.55

0565
 CHARLES & JANICE BURK
 NE 1/4 SEC. 3-T133N-R100W
 5.59 RODS-0.26 ACRES
 STA 1995+31.55 TO STA 1996+23.82



SEC COR
 N 267157.95
 E 1282711.0

0580
 ROCKY W. BURK
 FRED & RENE BURK
 NW 1/4 SEC. 2-T133N-R100W
 CENTERLINE LENGTH 2931.75'-
 177.68 RODS-8.39 ACRES
 STA 1996+23.82 TO STA 2025+55.07

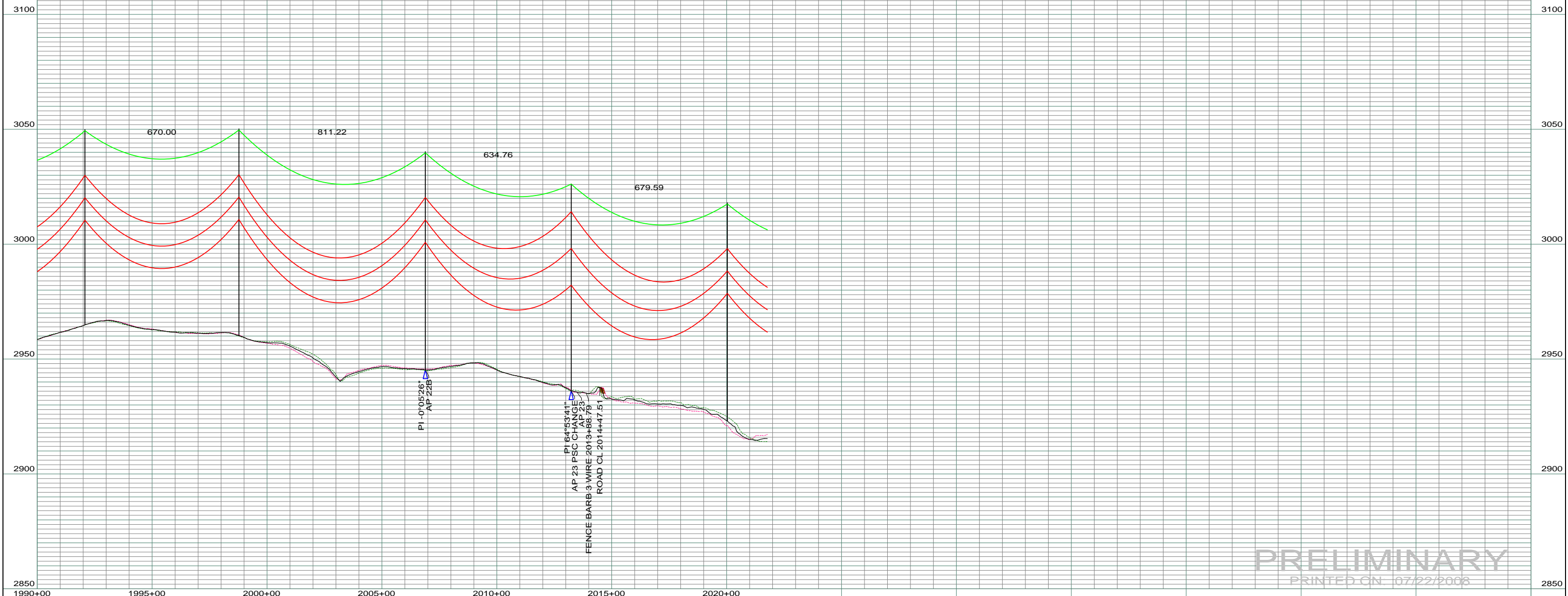
0570
 CHARLES & JANICE BURK
 SW 1/4 SEC. 2-T133N-R100W
 0.02 ACRES

DATE OF AERIAL PHOTOGRAPHY
 NOVEMBER 08, 2007
 GEODIGITAL INTERNATIONAL

ST-105 STA=1992+07.64 224
 ST-110 STA=1998+77.64 225
 ST-115 STA=2006+88.86 226
 SD65-090 STA=2013+23.62 227 AP 23
 ST-115 STA=2020+03.21 228

LEFT PROFILE 20'
 RIGHT PROFILE 20'

200.0 FT. HORIZ. SCALE
 20.0 FT. VERT. SCALE



PRELIMINARY
 PRINTED ON 07/22/2008

REV	DESCRIPTION	DRWN	DSGN	APPD	DATE	REV	DESCRIPTION	DRWN	DSGN	APPD	DATE
1	-	-	-	-	-	5	-	-	-	-	-
2	-	-	-	-	-	-	-	-	-	-	-
3	-	-	-	-	-	-	-	-	-	-	-
4	-	-	-	-	-	-	-	-	-	-	-

STATE NAME: NORTH DAKOTA		ZONE: 3302 SOUTH		DESIGN BY: DAM/CDB	04/03/08	FACILITY: TRANSMISSION SYSTEM MAINTENANCE	
DESIGN INFORMATION		DRAWN BY: CDB		07/22/2008		LOCATION UNIT: 181 - RHAME SUB TO BELFIELD SUB - 230 KV LINE	
CONDUCTOR	SIZE	STRINGING TENSION	NESC TENSION	DESIGN RULING SPAN	ACTUAL RULING SPAN	RHAME TO BELFIELD TRANSMISSION PROJECT	
	1272 MCM ACSR					SCALE: AS SHOWN COUNTY NAME: SLOPE	
	OHGW 7/16" E.H.S. STEEL					BASIN DRAWING NO. 181-90-T3-036 REV. 0	
	OPGW AC 86/596					DATE OF AERIAL PHOTOGRAPHY NOVEMBER 08, 2007 GEODIGITAL INTERNATIONAL	