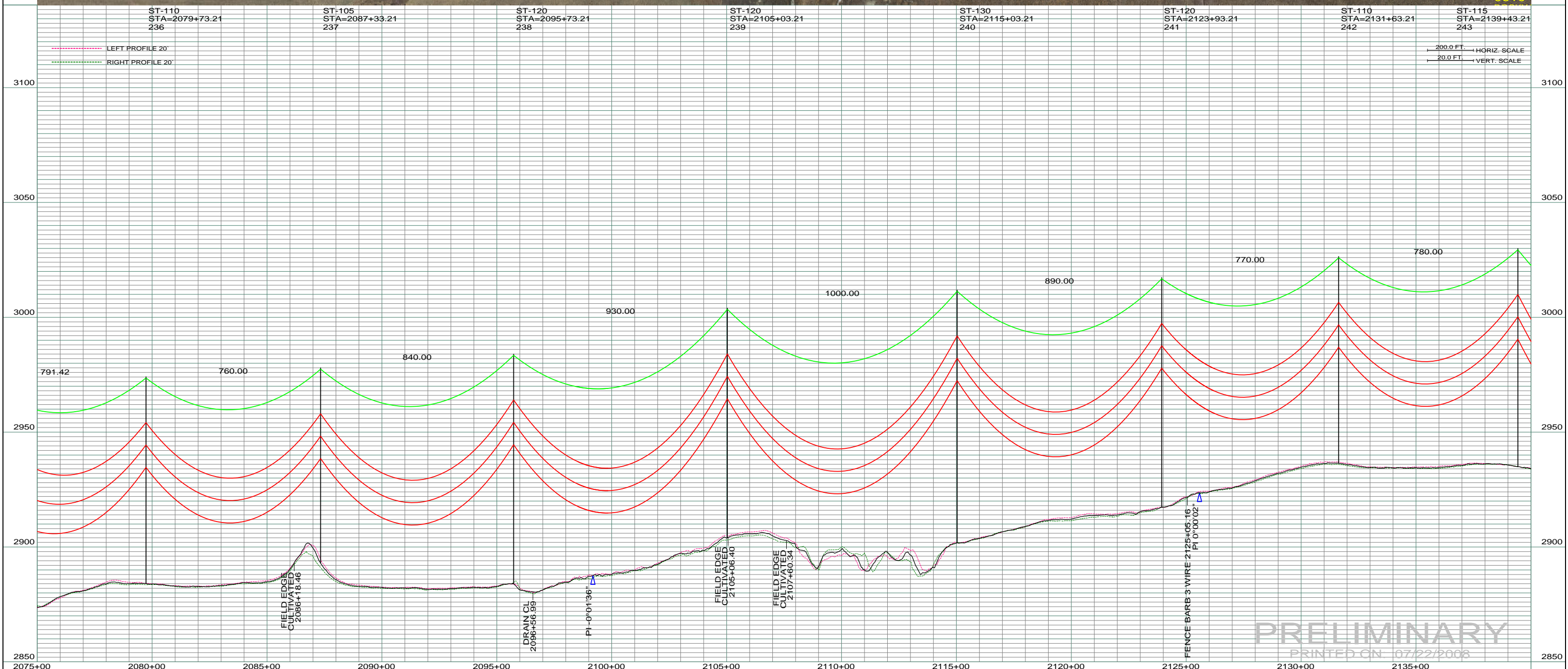




DATE OF AERIAL PHOTOGRAPH: NOVEMBER 08, 2007
 GEODIGITAL INTERNATIONAL



PRELIMINARY
 PRINTED ON: 07/22/2008

REV	DESCRIPTION	DRWN	DSGN	APPD	DATE	REV
1	-	-	-	-	-	5
2	-	-	-	-	-	-
3	-	-	-	-	-	-
4	-	-	-	-	-	-

DESCRIPTION	DRWN	DSGN	APPD	DATE
STATE NAME: NORTH DAKOTA				
ZONE: 3302 SOUTH				
DESIGN BY: DAM/CDB				
DRAWN BY: CDB				
DESIGN CHK: -				
DRAFT CHK: -				
APPROVED: -				

DESIGN INFORMATION				
CONDUCTOR	SIZE	STRINGING TENSION	NESC TENSION	DESIGN RULING SPAN
	1272 MCM ACSR			
	OHGW	7/16" E.H.S. STEEL		
	OPGW	AC 86/596		

DESIGN BY:	DATE	FACILITY:
DAM/CDB	04/03/08	TRANSMISSION SYSTEM MAINTENANCE
DRAWN BY:	07/22/2008	181 - RHAME SUB TO BELFIELD SUB - 230 KV LINE
DESIGN CHK:	-	
DRAFT CHK:	-	
APPROVED:	-	

SCALE:	COUNTY NAME:
AS SHOWN	SLOPE
BASIN DRAWING NO. 181-90-T3-038	REV. 0

BASIN ELECTRIC POWER COOPERATIVE
 1717 EAST INTERSTATE AVENUE
 BISMARCK, NORTH DAKOTA
 PHONE 701-223-0441