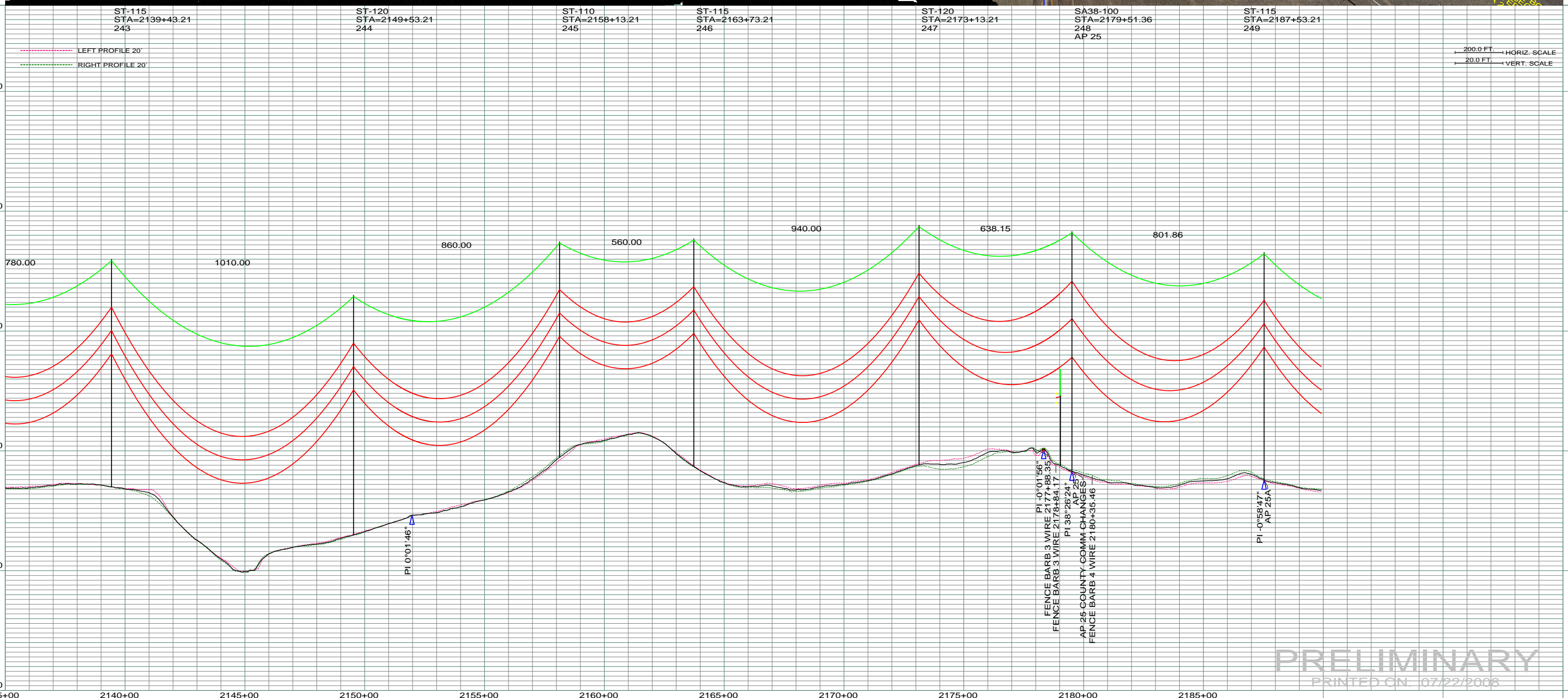


DATE OF AERIAL PHOTOGRAPHY: NOVEMBER 09, 2007
 GEODIGITAL INTERNATIONAL



PRELIMINARY
 PRINTED ON: 07/22/2008

REV	DESCRIPTION	DRWN	DSGN	APPD	DATE	REV	DESCRIPTION	DRWN	DSGN	APPD	DATE	STATE NAME: NORTH DAKOTA	ZONE: 3302 SOUTH	DESIGN BY: DAM/CDB	04/03/08	FACILITY: TRANSMISSION SYSTEM MAINTENANCE	LOCATION UNIT: 181 - RHAME SUB TO BELFIELD SUB - 230 KV LINE	BASIN ELECTRIC POWER COOPERATIVE	1717 EAST INTERSTATE AVENUE BISMARCK, NORTH DAKOTA PHONE 701-223-0441	
1	-	-	-	-	-	5								DRAWN BY: CDB	07/22/2008			SCALE: AS SHOWN	COUNTY NAME: SLOPE	
2	-	-	-	-	-									DESIGN CHK: -						
3	-	-	-	-	-									DRAFT CHK: -						
4	-	-	-	-	-									APPROVED: -						
												DESIGN INFORMATION		RHHAME TO BELFIELD TRANSMISSION PROJECT		SCALE: AS SHOWN		COUNTY NAME: SLOPE		
												CONDUCTOR	1272 MCM ACSR	STRINGING TENSION	NESC TENSION	DESIGN RULING SPAN	ACTUAL RULING SPAN	BASIN DRAWING NO. 181-90-T3-039		REV. 0
												OHGW	7/16" E.H.S. STEEL							
												OPGW	AC 86/596							