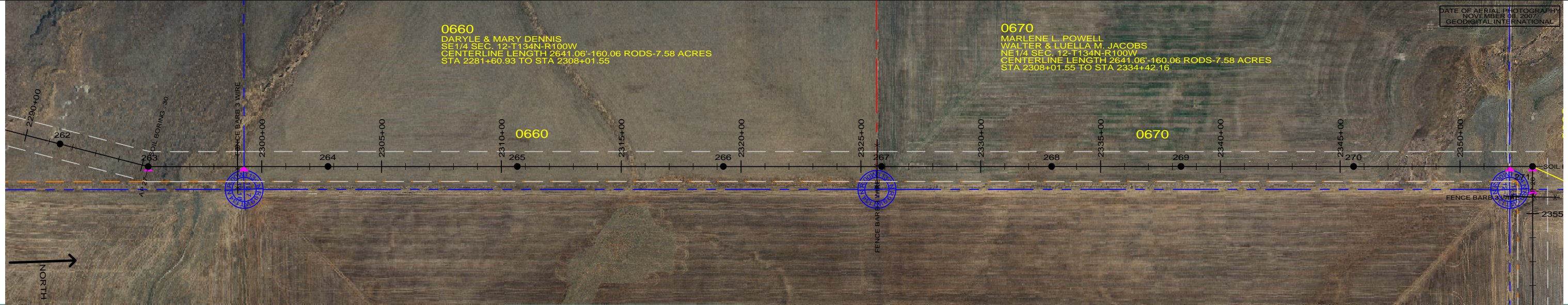


0660
DARYLE & MARY DENNIS
SE 1/4 SEC. 12-T134N-R100W
CENTERLINE LENGTH 2641.06'-160.06 RODS-7.58 ACRES
STA 2281+60.93 TO STA 2308+01.55

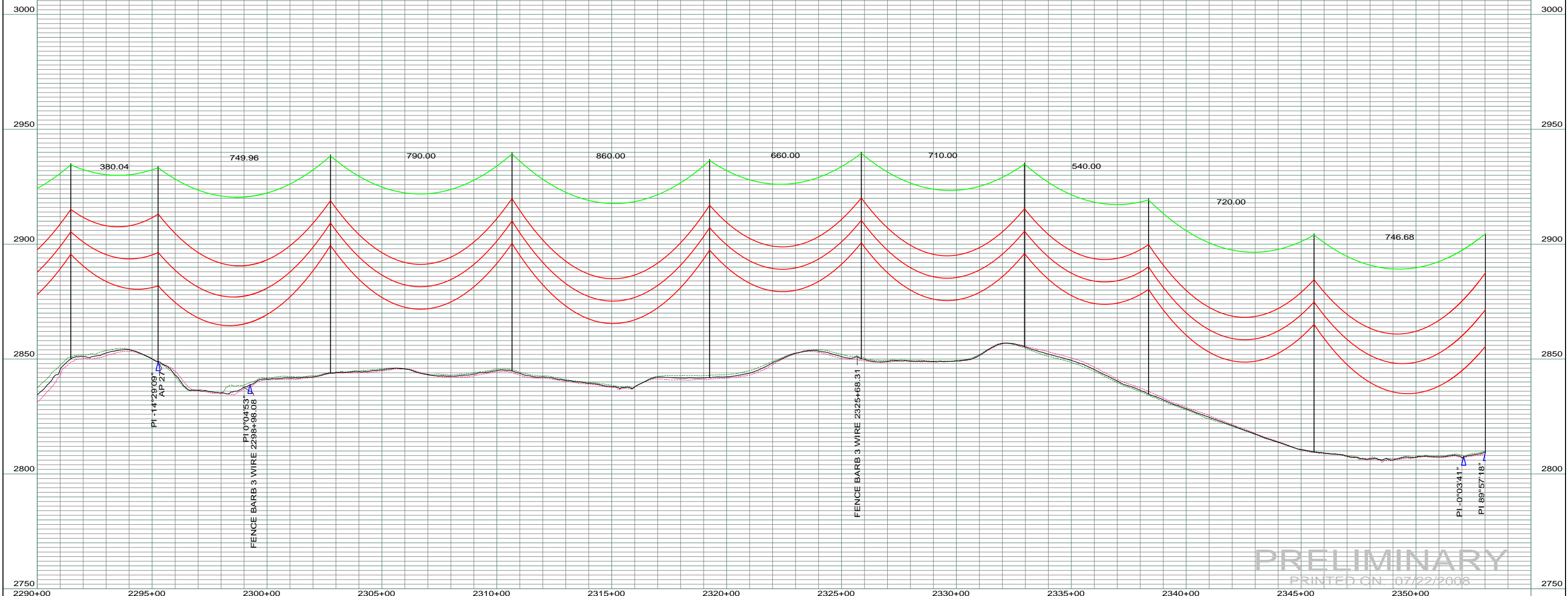
0670
MARLENE L. POWELL
WALTER & LUELLA M. JACOBS
NE 1/4 SEC. 12-T134N-R100W
CENTERLINE LENGTH 2641.06'-160.06 RODS-7.58 ACRES
STA 2308+01.55 TO STA 2334+42.16



ST-105 STA=2291+46.15 262	SA16-085 STA=2295+26.20 263 AP 27	ST-115 STA=2302+76.16 264	ST-115 STA=2310+66.16 265	ST-115 STA=2319+26.16 266	ST-110 STA=2325+86.16 267	ST-100 STA=2332+96.16 268	ST-105 STA=2338+36.16 269	ST-115 STA=2345+56.16 270	SD90-095 STA=2353+02.84 271 AP 28
---------------------------------	--	---------------------------------	---------------------------------	---------------------------------	---------------------------------	---------------------------------	---------------------------------	---------------------------------	--

--- LEFT PROFILE 20'
--- RIGHT PROFILE 20'

200.0 FT. --- HORIZ. SCALE
20.0 FT. --- VERT. SCALE



PRELIMINARY
PRINTED ON 07/22/2008

REV	DESCRIPTION	DRWN	DSGN	APPD	DATE	REV	DESCRIPTION	DRWN	DSGN	APPD	DATE	STATE NAME: NORTH DAKOTA	ZONE: 3302 SOUTH	DESIGN BY: DAM/CDB	04/03/08	FACILITY: TRANSMISSION SYSTEM MAINTENANCE	<p>BASIN ELECTRIC POWER COOPERATIVE 1717 EAST INTERSTATE AVENUE BISMARCK, NORTH DAKOTA PHONE 701-223-0441</p>			
1	-	-	-	-	-	5						DESIGN INFORMATION		DRAWN BY: CDB	07/22/2008	LOCATION UNIT: 181 - RHAME SUB TO BELFIELD SUB - 230 KV LINE		SCALE: AS SHOWN	COUNTY NAME: SLOPE	
2	-	-	-	-	-							CONDUCTOR	1272 MCM ACSR	STRINGING TENSION	NESC TENSION	DESIGN RULING SPAN		ACTUAL RULING SPAN	DESIGN CHK: -	
3	-	-	-	-	-							OHGW	7/16" E.H.S. STEEL						DRAFT CHK:	
4	-	-	-	-	-							OPGW	AC 86/596					APPROVED:		

BASIN DRAWING NO. **181-90-T3-042** REV. **0**