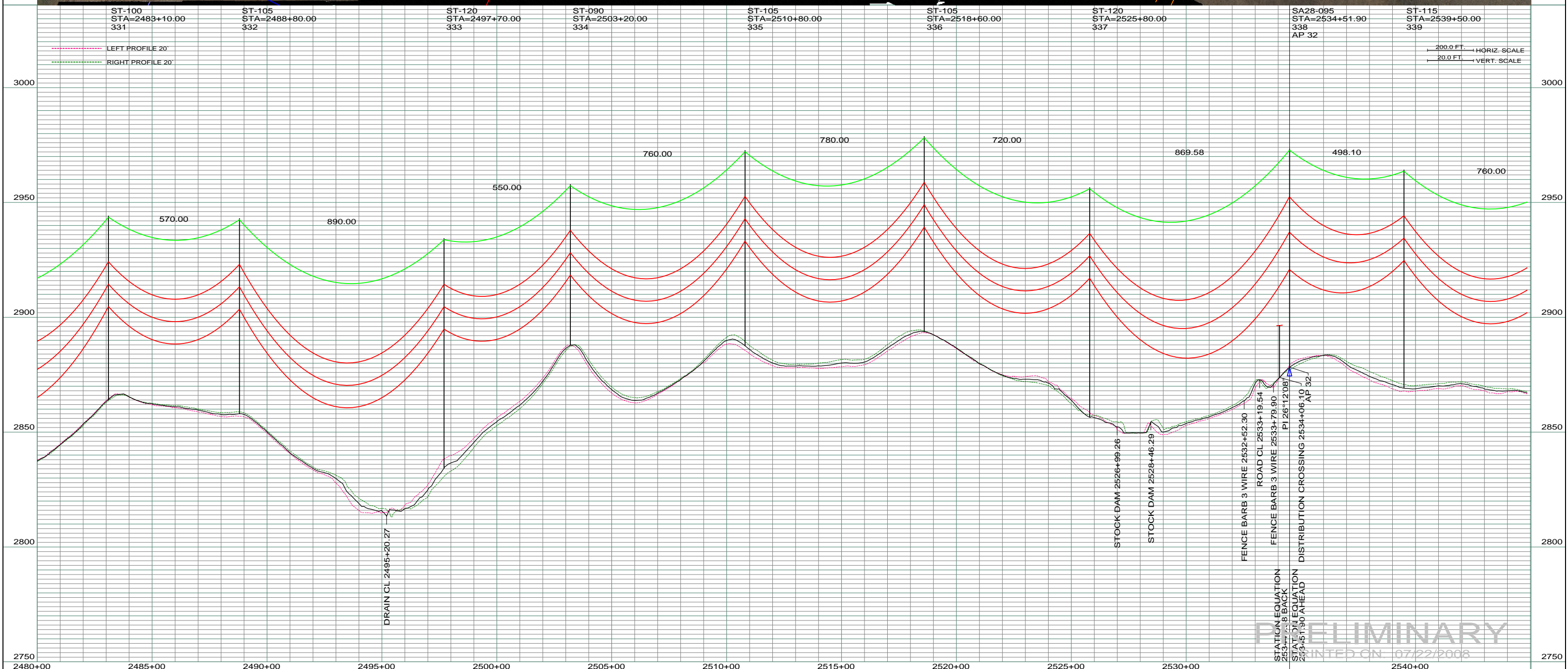


0830
 WARREN & KATHLEEN BOCK
 S1/2, SE 1/4 NE 1/4, SEC. 11, T135N-R99W
 CENTERLINE LENGTH 5880.97-356.42 RODS-16.88 ACRES
 STA 2788+13.24 TO STA 2846+93.21

DATE OF AERIAL PHOTOGRAPHY
 NOVEMBER 08, 2007
 GEODIGITAL INTERNATIONAL



REV	DESCRIPTION	DRWN	DSGN	APPD	DATE	REV	DESCRIPTION	DRWN	DSGN	APPD	DATE
1	-	-	-	-	-	5	-	-	-	-	-
2	-	-	-	-	-	-	-	-	-	-	-
3	-	-	-	-	-	-	-	-	-	-	-
4	-	-	-	-	-	-	-	-	-	-	-

STATION	DESCRIPTION
ST-100 STA=2483+10.00 331	
ST-105 STA=2488+80.00 332	
ST-120 STA=2497+70.00 333	
ST-090 STA=2503+20.00 334	
ST-105 STA=2510+80.00 335	
ST-105 STA=2518+60.00 336	
ST-120 STA=2525+80.00 337	
SA28-095 STA=2534+51.90 338 AP 32	
ST-115 STA=2539+50.00 339	

DESIGN INFORMATION	
CONDUCTOR	1272 MCM ACSR
OHGW	7/16" E.H.S. STEEL
OPGW	AC 86/596

DESIGN INFORMATION	
STRINGING TENSION	
NESC TENSION	
DESIGN RULING SPAN	
ACTUAL RULING SPAN	

DESIGN INFORMATION	
DESIGN BY:	DAM
DATE:	07/22/2008
DRAWN BY:	CDB
DATE:	07/22/2008
DESIGN CHK:	-
DRAFT CHK:	-
APPROVED:	-

DESIGN INFORMATION	
STATE NAME:	NORTH DAKOTA
ZONE:	3302 SOUTH
FACILITY:	TRANSMISSION SYSTEM MAINTENANCE
LOCATION UNIT:	181 - RHAME SUB TO BELFIELD SUB - 230 KV LINE
RHAME TO BELFIELD TRANSMISSION PROJECT	
PLAN AND PROFILE	
MILE 8 & 9	
SCALE:	AS SHOWN
COUNTY NAME:	BOWMAN
BASIN DRAWING NO.	181-090-T3-051
REV.	0

PRELIMINARY
 PRINTED ON 07/22/2008