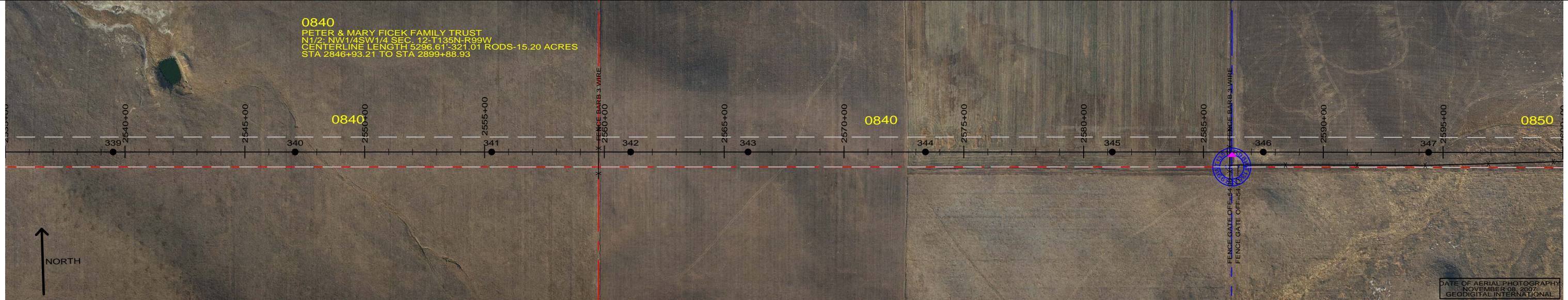
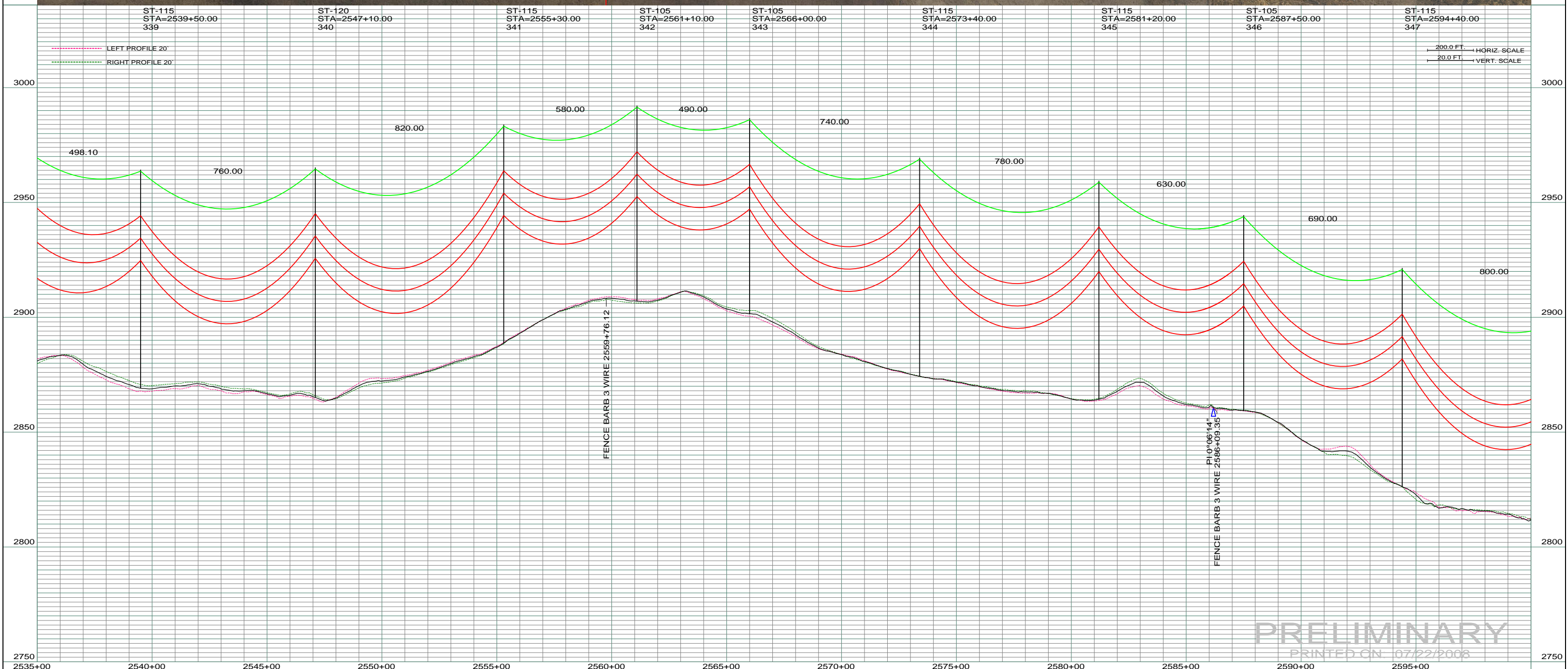


0840
 PETER & MARY FICEK FAMILY TRUST
 N1/2, NW1/4SW1/4 SEC. 12, T135N, R99W
 CENTERLINE LENGTH 5296.61'-321.01 RODS-15.20 ACRES
 STA 2846+93.21 TO STA 2899+88.93



DATE OF AERIAL PHOTOGRAPH
 NOVEMBER 08, 2007
 GEODIGITAL INTERNATIONAL



PRELIMINARY
 PRINTED ON 07/22/2008

REV	DESCRIPTION	DRWN	DSGN	APPD	DATE	REV	DESCRIPTION	DRWN	DSGN	APPD	DATE	STATE NAME: NORTH DAKOTA ZONE: 3302 SOUTH		DESIGN BY: DAM	07/22/2008	FACILITY: TRANSMISSION SYSTEM MAINTENANCE	BASIN ELECTRIC POWER COOPERATIVE 1717 EAST INTERSTATE AVENUE BISMARCK, NORTH DAKOTA PHONE 701-223-0441		
1	-	-	-	-	-	5							DESIGN INFORMATION		DESIGN BY: CDB	07/22/2008		RHHAME TO BELFIELD TRANSMISSION PROJECT BASIN DRAWING NO. 181-090-T3-052 COUNTY NAME: BOWMAN SCALE: AS SHOWN REV. 0	
2	-	-	-	-	-							CONDUCTOR	SIZE	STRINGING TENSION	NESC TENSION	DESIGN RULING SPAN			ACTUAL RULING SPAN
3	-	-	-	-	-							OHGW	7/16" E.H.S. STEEL						
4	-	-	-	-	-							OPGW	AC 86/596						