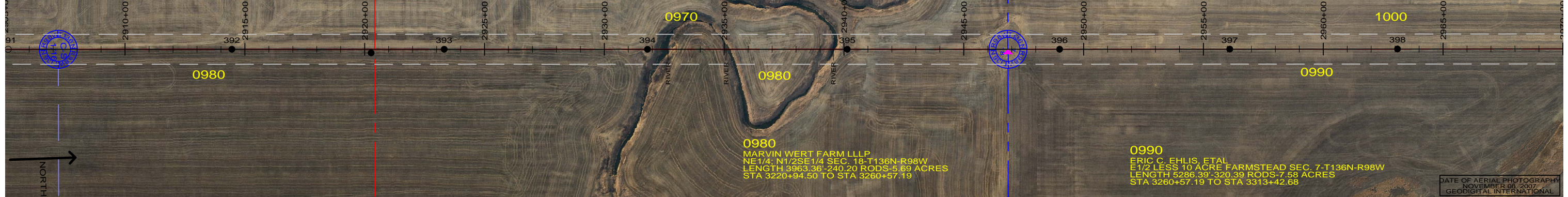


**0970**  
 DAKOTA WEST FARMS PARTNERSHIP  
 W1/2 LESS W1/2SW1/4SW1/4 SEC. 18-T136N-R98W  
 LENGTH 5284.49-320.27 RODS-7.58 ACRES  
 STA 3207+73.60 TO STA 3260+57.19

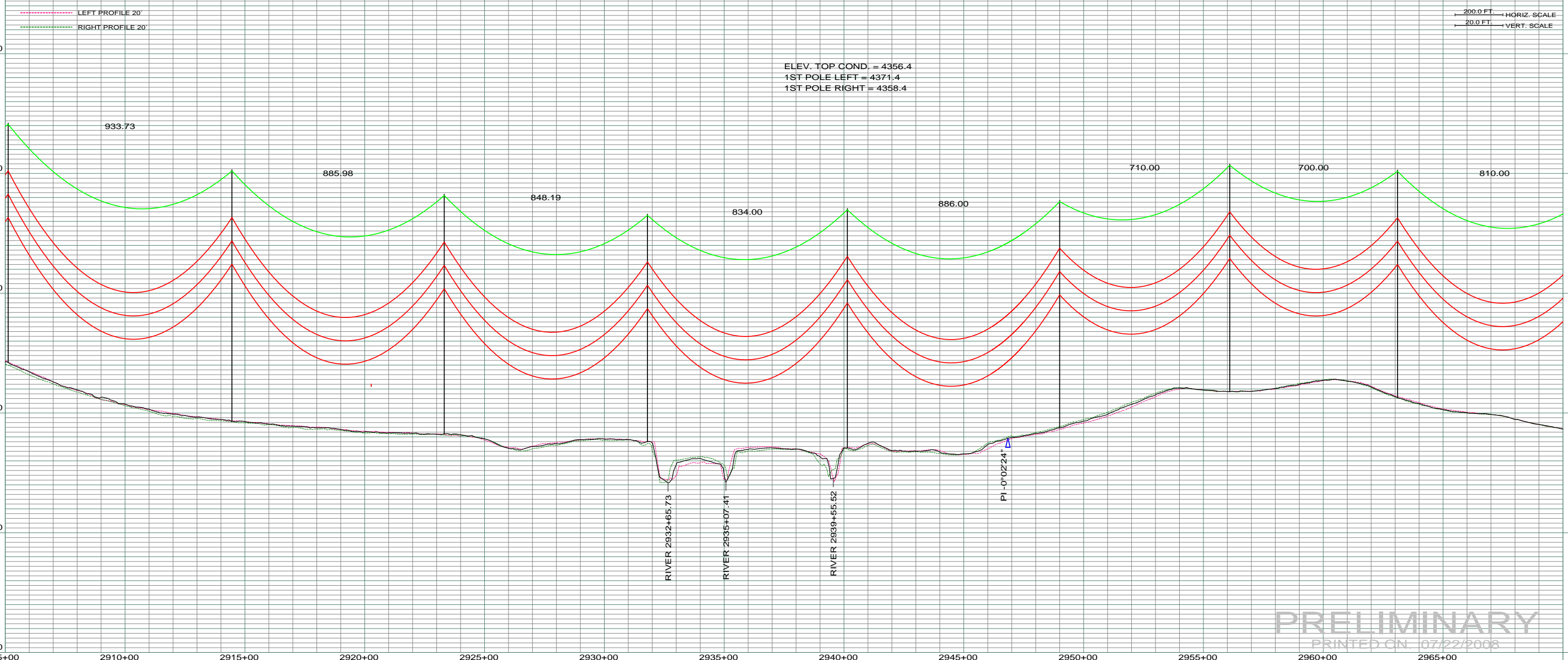
**0980**  
 MARVIN WERT FARM LLLP  
 NE1/4; N1/2SE1/4 SEC. 18-T136N-R98W  
 LENGTH 3963.36-240.20 RODS-5.69 ACRES  
 STA 3220+94.50 TO STA 3260+57.19

**0990**  
 ERIC C. EHLIS, ETAL  
 E1/2 LESS 10 ACRE FARMSTEAD SEC. 7-T136N-R98W  
 LENGTH 5286.39-320.39 RODS-7.58 ACRES  
 STA 3260+57.19 TO STA 3313+42.68

DATE OF AERIAL PHOTOGRAPH  
 NOVEMBER 08, 2007  
 GEODIGITAL INTERNATIONAL



ST-120 STA=2905+12.10 391	ST-125 STA=2914+45.83 392	ST-120 STA=2923+31.81 393	ST-115 STA=2931+80.00 394	ST-120 STA=2940+14.00 395	ST-115 STA=2949+00.00 396	ST-115 STA=2956+10.00 397	ST-115 STA=2963+10.00 398
---------------------------------	---------------------------------	---------------------------------	---------------------------------	---------------------------------	---------------------------------	---------------------------------	---------------------------------



**PRELIMINARY**  
 PRINTED ON 07/22/2008

REV	DESCRIPTION	DRWN	DSGN	APPD	DATE	REV	DESCRIPTION	DRWN	DSGN	APPD	DATE	STATE NAME: NORTH DAKOTA	ZONE: 3302 SOUTH	DESIGN BY: DAM	07/22/2008	FACILITY: TRANSMISSION SYSTEM MAINTENANCE	<b>BASIN ELECTRIC POWER COOPERATIVE</b> 1717 EAST INTERSTATE AVENUE BISMARCK, NORTH DAKOTA PHONE 701-223-0441		
1	-	-	-	-	-	5						DESIGN INFORMATION		DRAWN BY: CDB	07/22/2008	LOCATION UNIT: 181 - RHAME SUB TO BELFIELD SUB - 230 KV LINE			
2	-	-	-	-	-							CONDUCTOR	1272 MCM ACSR	STRINGING TENSION		DESIGN RULING SPAN			ACTUAL RULING SPAN
3	-	-	-	-	-							OHGW	7/16" E.H.S. STEEL	DESIGN RULING SPAN		DESIGN CHK: -			
4	-	-	-	-	-							OPGW	AC 86/596	DESIGN RULING SPAN		DRAFT CHK: -			
												APPROVED:		<b>RHAME TO BELFIELD TRANSMISSION PROJECT</b> <b>PLAN AND PROFILE</b> <b>MILE 16 &amp; 17</b>		SCALE: AS SHOWN	COUNTY NAME: BOWMAN		
																BASIN DRAWING NO. 181-090-T3-059	REV. 0		