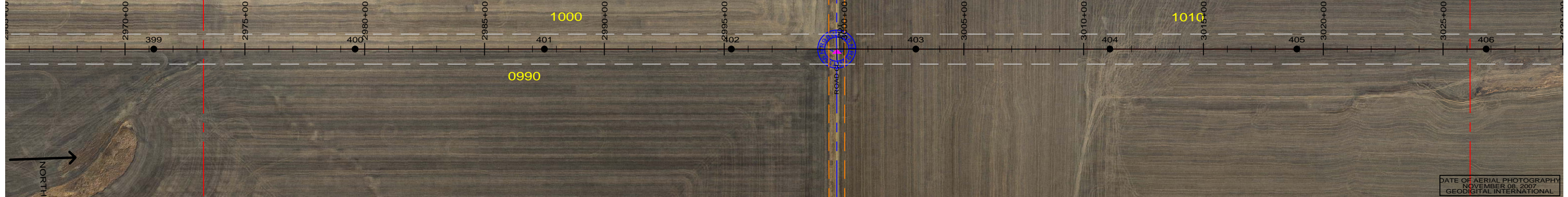


1000
 DAKOTA WEST FARMS PARTNERSHIP
 W1/2 SEC. 7-T136N-R98W
 LENGTH 5286.39-320.39 RODS-7.58 ACRES
 STA 3260+57.19 TO STA 3313+42.68

1010
 IDA BUTLER FAMILY SURFACE TRUST
 S1/2 GOVT LOTS 10,11 SEC. 6-T136N-R98W
 CENTERLINE LENGTH 3964.48'-
 240.27 RODS-11.38 ACRES
 STA 3313+42.68 TO STA 3353+06.50

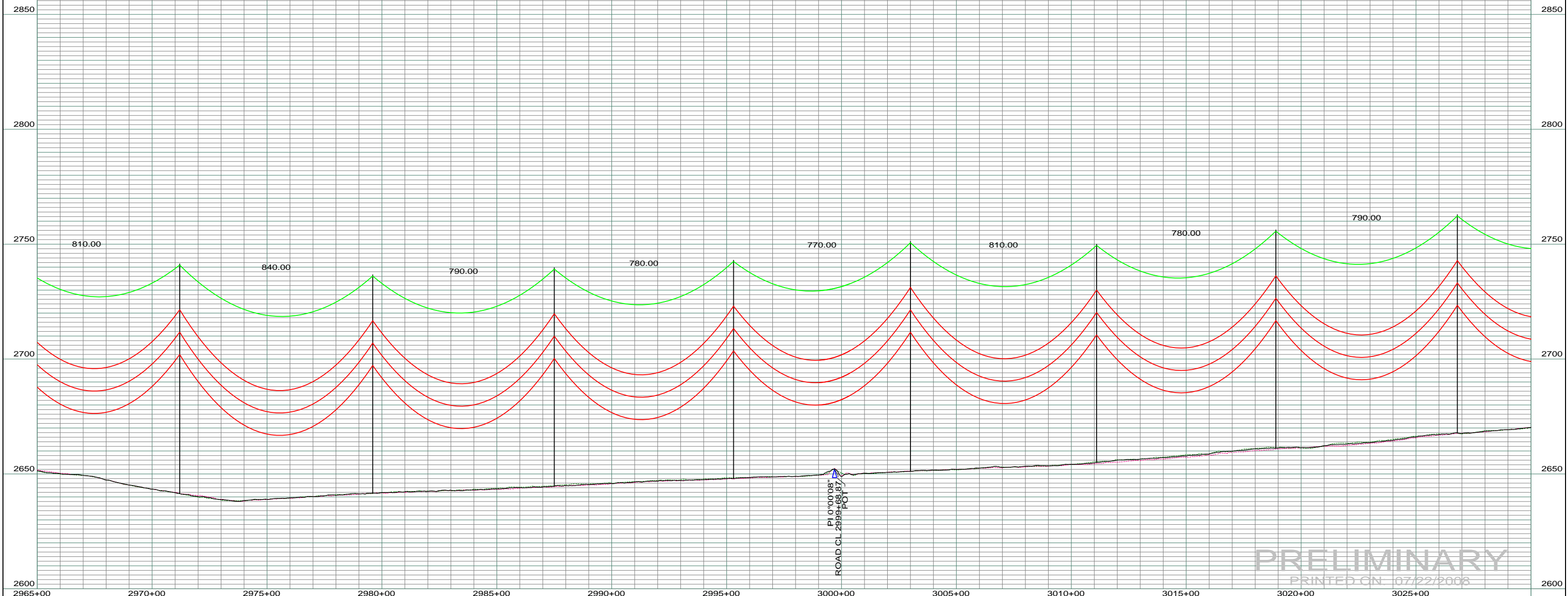


DATE OF AERIAL PHOTOGRAPHY
 NOVEMBER 08, 2007
 GEODIGITAL INTERNATIONAL

ST-120 STA=2971+20.00 399 ST-115 STA=2979+60.00 400 ST-115 STA=2987+50.00 401 ST-115 STA=2995+30.00 402 ST-120 STA=3003+00.00 403 ST-115 STA=3011+10.00 404 ST-115 STA=3018+90.00 405 ST-115 STA=3026+80.00 406

--- LEFT PROFILE 20'
 --- RIGHT PROFILE 20'

200.0 FT. HORIZ. SCALE
 20.0 FT. VERT. SCALE



REV	DESCRIPTION	DRWN	DSGN	APPD	DATE	REV	DESCRIPTION	DRWN	DSGN	APPD	DATE
1		-	-	-	-	5					
2		-	-	-	-						
3		-	-	-	-						
4		-	-	-	-						

DESIGN INFORMATION		DESIGN BY:	DATE
CONDUCTOR	1272 MCM ACSR	DAM	07/22/2008
OHGW	7/16" E.H.S. STEEL	DRAWN BY:	CDB
OPGW	AC 86/596	DESIGN CHK:	-
		DRAFT CHK:	
		APPROVED:	

FACILITY:		LOCATION UNIT:	
TRANSMISSION SYSTEM MAINTENANCE		181 - RHAME SUB TO BELFIELD SUB - 230 KV LINE	
RHAME TO BELFIELD TRANSMISSION PROJECT			
PLAN AND PROFILE			

SCALE: AS SHOWN	COUNTY NAME: BOWMAN
BASIN DRAWING NO. 181-090-T3-060	REV. 0

BASIN ELECTRIC
 POWER COOPERATIVE
 1717 EAST INTERSTATE AVENUE
 BISMARCK, NORTH DAKOTA
 PHONE 701-223-0441