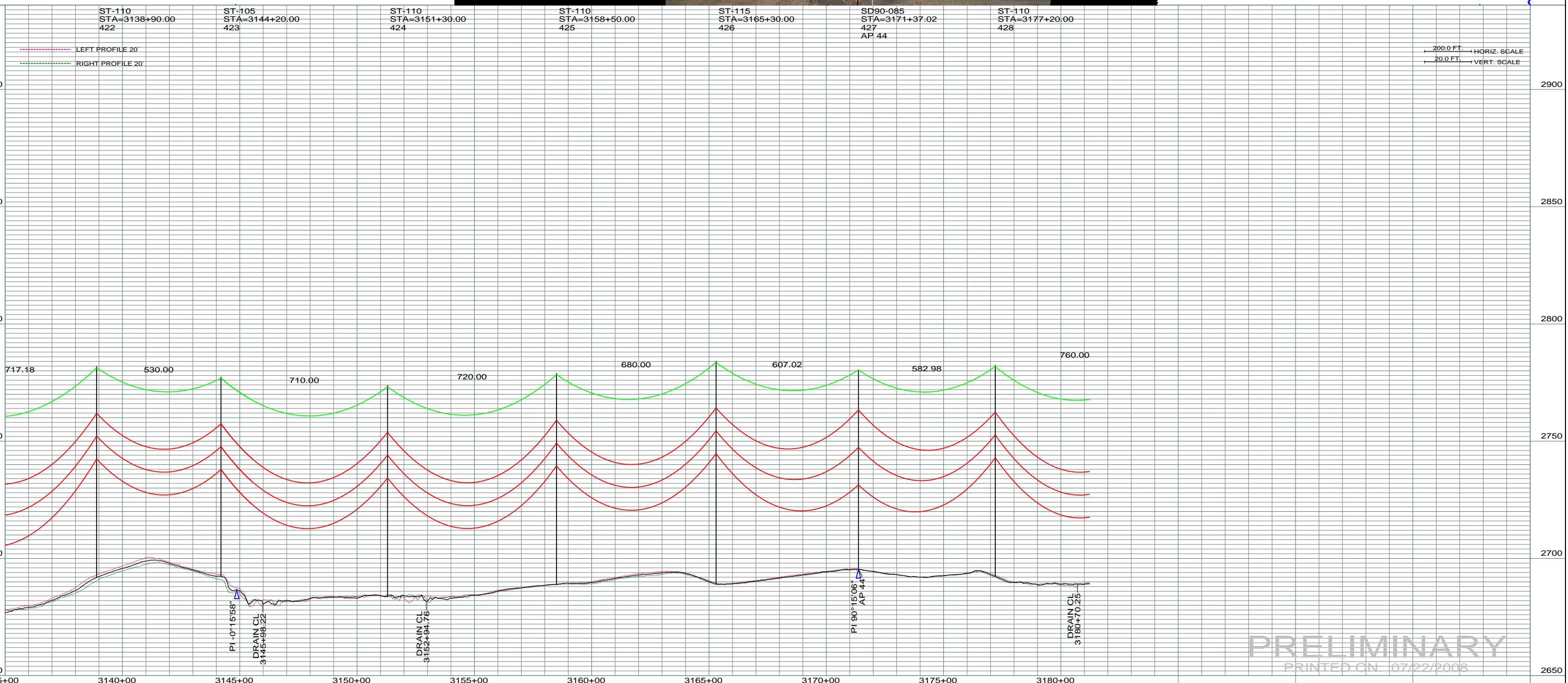


1070
WAGNER FARMS, A LIMITED PARTNERSHIP
W1/2NW1/2 SEC. 28-T137N-R98W
CENTERLINE LENGTH 1320.06'-80.00 RODS-3.79 ACRES
STA 3445+40.12 TO STA 3458+59.97

DATE OF AERIAL PHOTOGRAPHY:
NOVEMBER 08, 2007
GEODIGITAL INTERNATIONAL



PRELIMINARY
PRINTED ON 07/22/2008

REV	DESCRIPTION	DRWN	DSGN	APPD	DATE	REV	DESCRIPTION	DRWN	DSGN	APPD	DATE	STATE NAME: NORTH DAKOTA ZONE: 3302 SOUTH		DESIGN BY: DAM	07/22/2008	FACILITY: TRANSMISSION SYSTEM MAINTENANCE	
1	-	-	-	-	-	5	-	-	-	-	-	DESIGN INFORMATION		DRAWN BY: CDB	07/22/2008	LOCATION UNIT: 181 - RHAME SUB TO BELFIELD SUB - 230 KV LINE	
2	-	-	-	-	-	-	-	-	-	-	-	CONDUCTOR	1272 MCM ACSR	STRINGING TENSION	NEST TENSION	DESIGN RULING SPAN	ACTUAL RULING SPAN
3	-	-	-	-	-	-	-	-	-	-	-	OHGW	7/16" E.H.S. STEEL				
4	-	-	-	-	-	-	-	-	-	-	-	OPGW	AC 86/596				
												DESIGN CHK: -		RHAME TO BELFIELD TRANSMISSION PROJECT		SCALE: AS SHOWN	COUNTY NAME: BOWMAN
												DRAFT CHK:		PLAN AND PROFILE		BASIN DRAWING NO. 181-90-T3-063	REV. 0
												APPROVED:					



BASIN ELECTRIC
POWER COOPERATIVE
1717 EAST INTERSTATE AVENUE
BISMARCK, NORTH DAKOTA
PHONE 701-223-0441