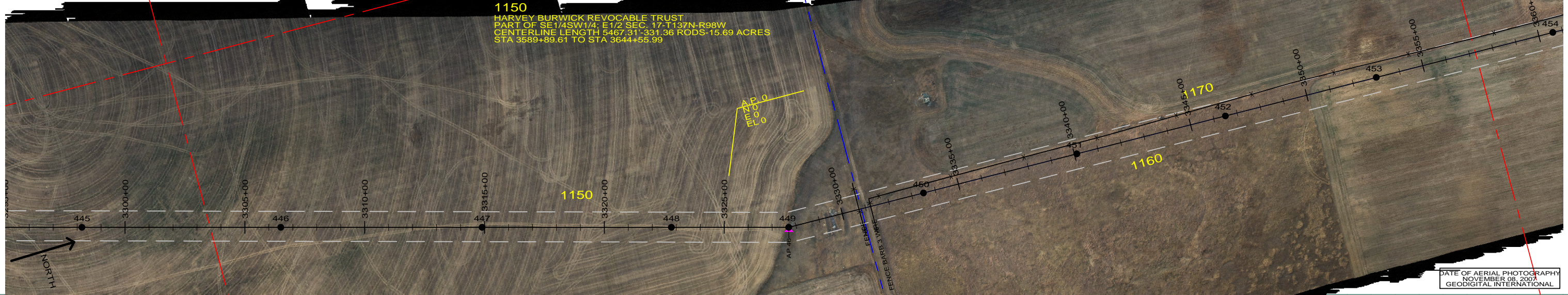
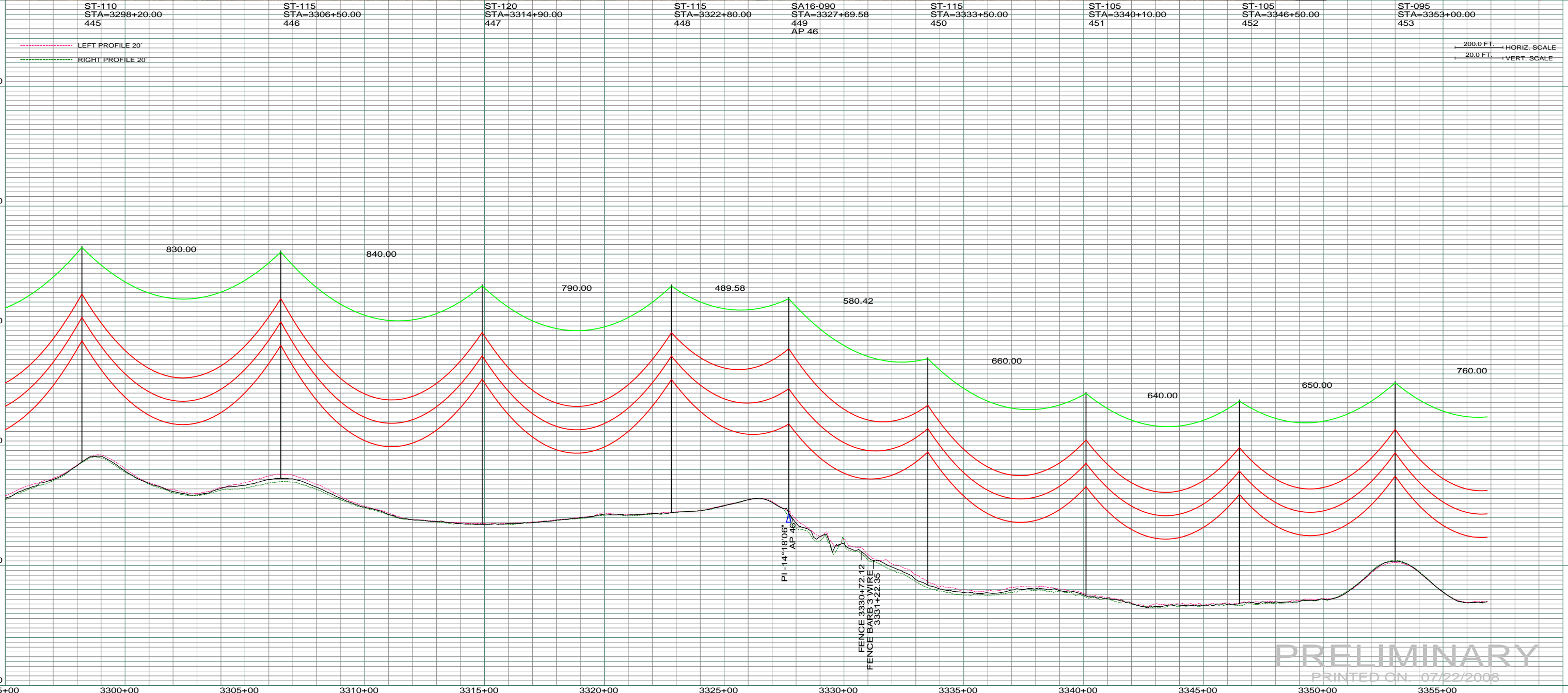


1150
 HARVEY BURWICK REVOCABLE TRUST
 PART OF SE1/4SW1/4, E1/2 SEC. 17-T137N-R98W
 CENTERLINE LENGTH 5467.31-331.36 RODS-15.69 ACRES
 STA 3589+89.61 TO STA 3644+55.99



DATE OF AERIAL PHOTOGRAPHY
 NOVEMBER 08, 2007
 GEODIGITAL INTERNATIONAL



PRELIMINARY
 PRINTED ON 07/22/2008

REV	DESCRIPTION	DRWN	DSGN	APPD	DATE	REV	DESCRIPTION	DRWN	DSGN	APPD	DATE	STATE NAME: NORTH DAKOTA	ZONE: 3302 SOUTH	DESIGN BY: DAM	07/22/2008	FACILITY: TRANSMISSION SYSTEM MAINTENANCE	LOCATION UNIT: 181 - RHAME SUB TO BELFIELD SUB - 230 KV LINE	BASIN ELECTRIC POWER COOPERATIVE	1717 EAST INTERSTATE AVENUE	BISMARCK, NORTH DAKOTA	PHONE 701-223-0441	SCALE: AS SHOWN	COUNTY NAME: BOWMAN	REV. 0	
1		-	-	-	-	5								DRAWN BY: CDB	07/22/2008										
2		-	-	-	-									DESIGN CHK: -											
3		-	-	-	-									DRAFT CHK:											
4		-	-	-	-									APPROVED:											
												DESIGN INFORMATION				RHAME TO BELFIELD TRANSMISSION PROJECT				PLAN AND PROFILE		181-90-T3-066		0	
												CONDUCTOR	1272 MCM ACSR	STRINGING TENSION	NECS TENSION	DESIGN RULING SPAN	ACTUAL RULING SPAN								
												OHGW	7/16" E.H.S. STEEL												
												OPGW	AC 86/596												