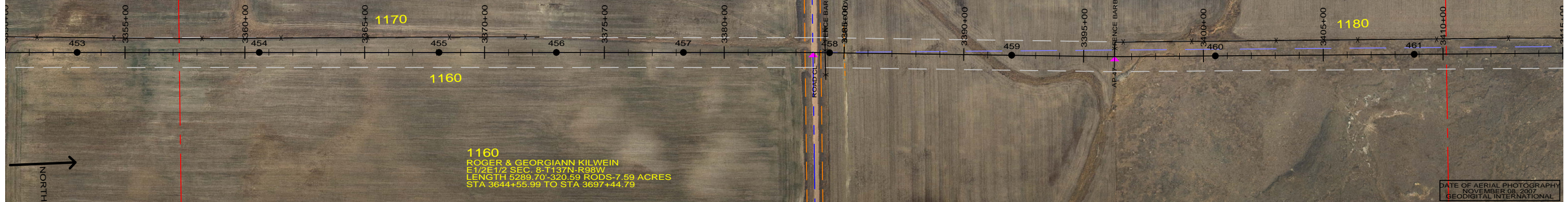


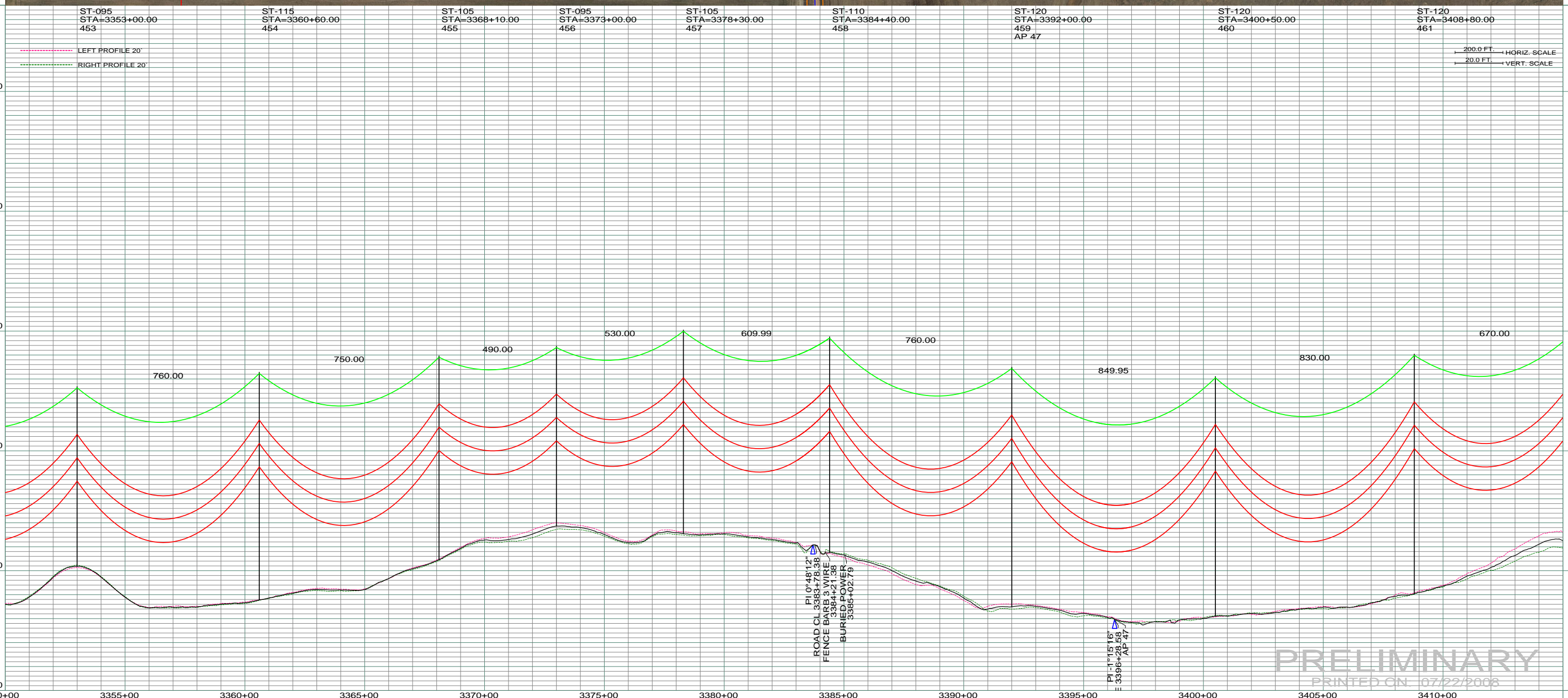
1170
 MYRON & NANCY EBERTS
 W/2E 1/2 SEC. 8-T137N-R98W
 LENGTH 5289.70'-320.59 RODS-7.59 ACRES
 STA 3644+55.99 TO STA 3697+44.79

1180
 MARVIN & MARIE LANTZ
 THERESA C. LANTZ (LIFE ESTATE)
 PART OF NE 1/4NW 1/4 E 1/2 SEC. 5-T137N-R98W
 CENTERLINE LENGTH 5841.65'-354.04 RODS-16.76 ACRES
 STA 3697+44.79 TO STA 3755+85.46

1160
 ROGER & GEORGIANN KILWEIN
 E 1/2 E 1/2 SEC. 8-T137N-R98W
 LENGTH 5289.70'-320.59 RODS-7.59 ACRES
 STA 3644+55.99 TO STA 3697+44.79



DATE OF AERIAL PHOTOGRAPHY
 NOVEMBER 08, 2007
 GEODIGITAL INTERNATIONAL



200.0 FT. HORIZ. SCALE
 20.0 FT. VERT. SCALE

STATION	ST-095 STA=3353+00.00 453	ST-115 STA=3360+60.00 454	ST-105 STA=3368+10.00 455	ST-095 STA=3373+00.00 456	ST-105 STA=3378+30.00 457	ST-110 STA=3384+40.00 458	ST-120 STA=3392+00.00 459 AP 47	ST-120 STA=3400+50.00 460	ST-120 STA=3408+80.00 461
3350+00									
3355+00									
3360+00									
3365+00									
3370+00									
3375+00									
3380+00									
3385+00									
3390+00									
3395+00									
3400+00									
3405+00									
3410+00									

PRELIMINARY
 PRINTED ON 07/22/2008

REV	DESCRIPTION	DRWN	DSGN	APPD	DATE	REV	DESCRIPTION	DRWN	DSGN	APPD	DATE
1		-	-	-	-	5					
2		-	-	-	-						
3		-	-	-	-						
4		-	-	-	-						

STATE NAME: NORTH DAKOTA	ZONE: 3302 SOUTH	DESIGN BY: DAM	07/22/2008	FACILITY: TRANSMISSION SYSTEM MAINTENANCE
DESIGN INFORMATION		DRAWN BY: CDB	07/22/2008	LOCATION UNIT: 181 - RHAME SUB TO BELFIELD SUB - 230 KV LINE
CONDUCTOR	SIZE: 1272 MCM ACSR	STRINGING TENSION	NESC TENSION	DESIGN RULING SPAN
OHGW	7/16" E.H.S. STEEL			ACTUAL RULING SPAN
OPGW	AC 86/596			
APPROVED:		RHHAME TO BELFIELD TRANSMISSION PROJECT		
		PLAN AND PROFILE		

SCALE: AS SHOWN	COUNTY NAME: BOWMAN
BASIN DRAWING NO. 181-90-T3-067	REV. 0