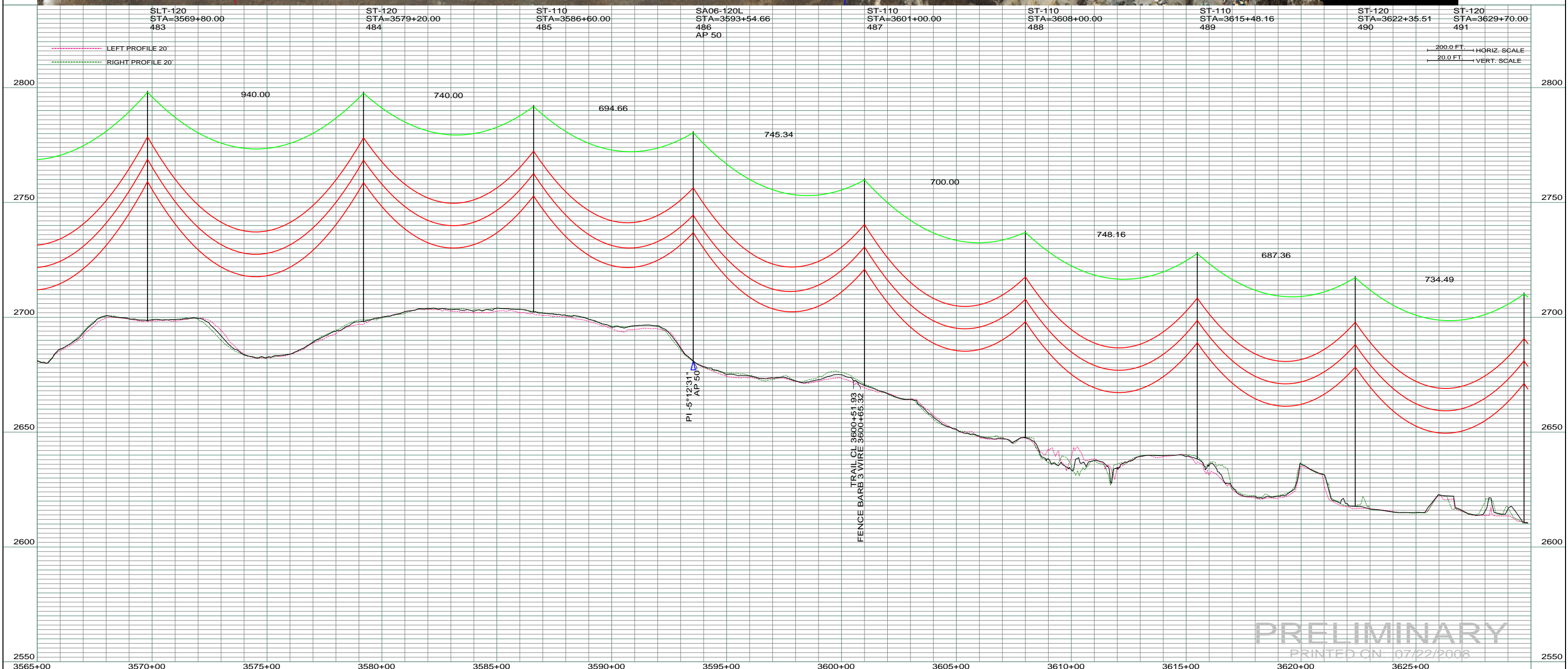
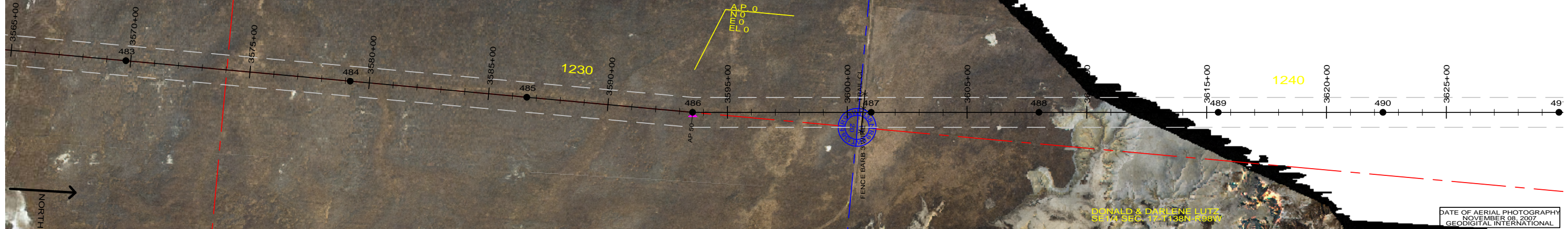


1230
 GEORGE C. & REGINA M. SCHMIDT
 (LIFE ESTATE)
 NE 1/4, E1/2NW1/4, S1/2 SEC. 20-T138N-R98W
 CENTERLINE LENGTH 5285.79'
 320.35 RODS = 15.17 ACRES
 STA 3861+36.43 TO STA 3914+21.32

DONALD & DARLENE LUTZ
 SE 1/4 SEC. 17, T138N R98W

DATE OF AERIAL PHOTOGRAPHY
 NOVEMBER 08, 2007
 GEODIGITAL INTERNATIONAL



PRELIMINARY
 PRINTED ON 07/22/2008

REV	DESCRIPTION	DRWN	DSGN	APPD	DATE	REV	DESCRIPTION	DRWN	DSGN	APPD	DATE
1		-	-	-	-	5					
2		-	-	-	-						
3		-	-	-	-						
4		-	-	-	-						

DESIGN INFORMATION				
CONDUCTOR	SIZE	STRINGING TENSION	NESC TENSION	DESIGN RULING SPAN
	1272 MCM ACSR			
	OHGW	7/16" E.H.S. STEEL		
	OPGW	AC 86/596		

DESIGN INFORMATION	
DESIGN BY:	ACTUAL RULING SPAN
DAM	
7/22/2008	
DRAWN BY: CDB	
7/22/2008	
DESIGN CHK: -	
DRAFT CHK: -	
APPROVED:	

FACILITY:		COUNTY NAME:	
LOCATION UNIT:	SCALE:	BASIN DRAWING NO.	REV.
TRANSMISSION SYSTEM MAINTENANCE	AS SHOWN	181-90-T3-072	0
181 - RHAME SUB TO BELFIELD SUB - 230 KV LINE	SLOPE		
RHAME TO BELFIELD TRANSMISSION PROJECT		BASIN ELECTRIC POWER COOPERATIVE	
PLAN AND PROFILE		1717 EAST INTERSTATE AVENUE BISMARCK, NORTH DAKOTA PHONE 701-223-0441	