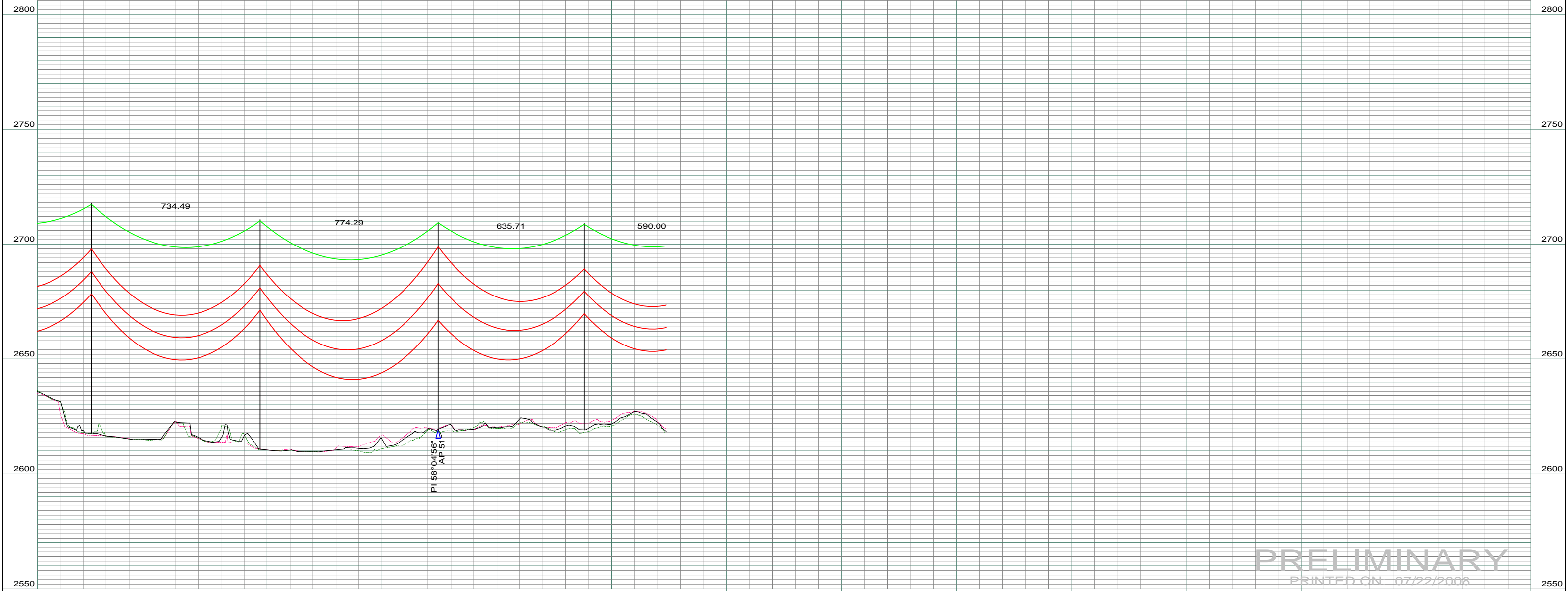


DATE OF AERIAL PHOTOGRAPHY  
NOVEMBER 08, 2007  
GEODIGITAL INTERNATIONAL

ST-120 STA=3622+35.51 490  
ST-120 STA=3629+70.00 491  
SD58-090 STA=3637+44.29 492 AP 51  
ST-110 STA=3643+80.00 493

LEFT PROFILE 20'  
RIGHT PROFILE 20'

200.0 FT. HORIZ. SCALE  
20.0 FT. VERT. SCALE



**PRELIMINARY**  
PRINTED ON 07/22/2008

REV	DESCRIPTION	DRWN	DSGN	APPD	DATE	REV	DESCRIPTION	DRWN	DSGN	APPD	DATE
1	-	-	-	-	-	5					
2	-	-	-	-	-						
3	-	-	-	-	-						
4	-	-	-	-	-						

DESIGN INFORMATION		DESIGN BY:	DATE
CONDUCTOR	1272 MCM ACSR	DAM	07/22/2008
OHGW	7/16" E.H.S. STEEL	CDB	07/22/2008
OPGW	AC 86/596		

STATE NAME:	NORTH DAKOTA	ZONE:	3302 SOUTH
FACILITY: TRANSMISSION SYSTEM MAINTENANCE			
LOCATION UNIT: 181 - RHAME SUB TO BELFIELD SUB - 230 KV LINE			
RHAME TO BELFIELD TRANSMISSION PROJECT			
PLAN AND PROFILE			

**BASIN ELECTRIC POWER COOPERATIVE**  
1717 EAST INTERSTATE AVENUE  
BISMARCK, NORTH DAKOTA  
PHONE 701-223-0441

SCALE: AS SHOWN COUNTY NAME: SLOPE  
BASIN DRAWING NO. 181-90-T3-073 REV. 0