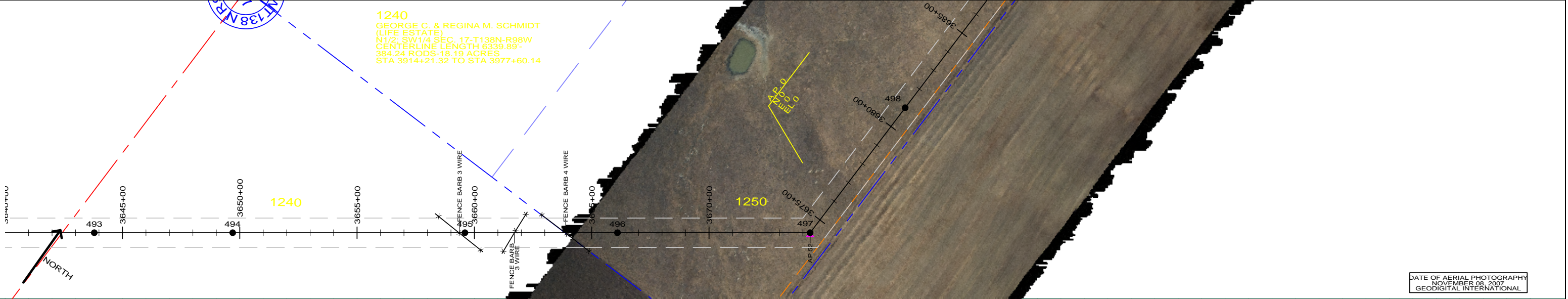
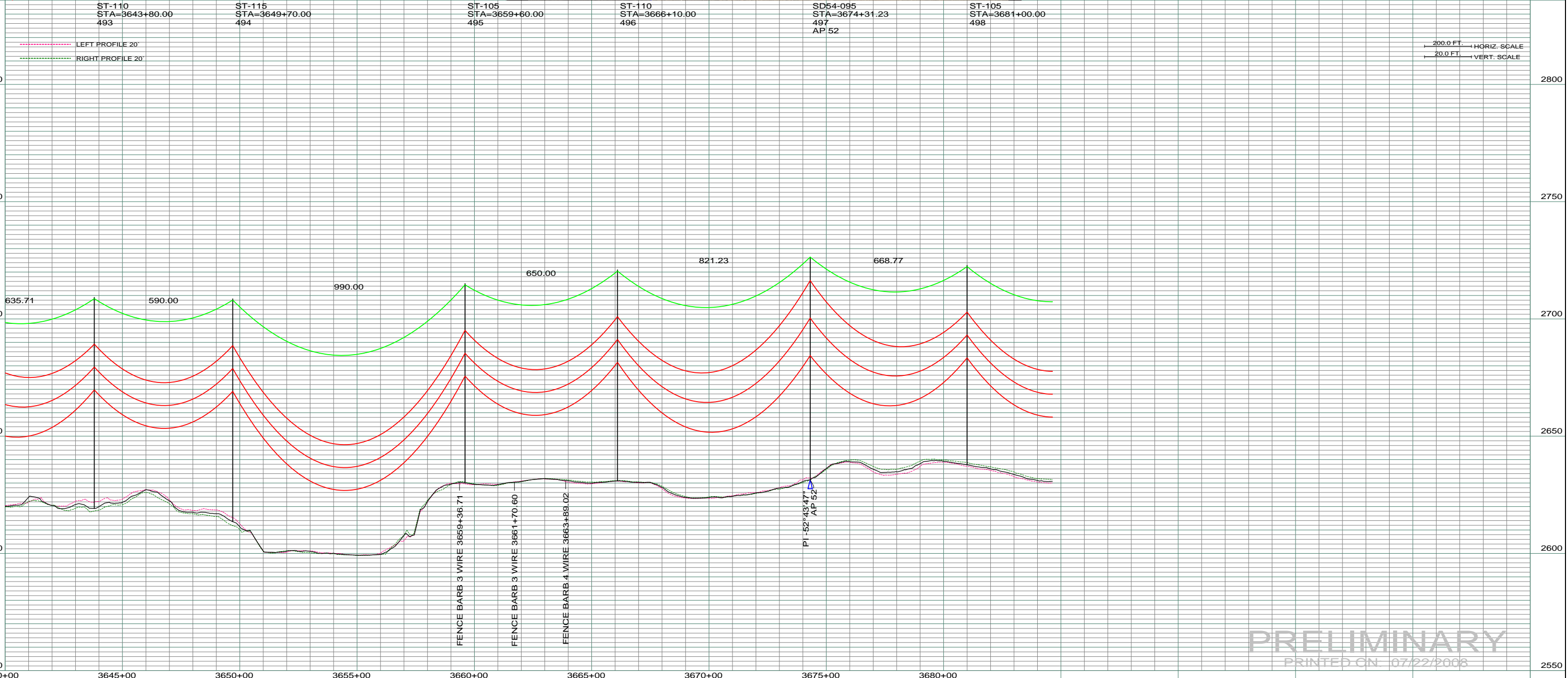


1240  
 GEORGE C. & REGINA M. SCHMIDT  
 (LIFE ESTATE)  
 N1/2, SW1/4 SEC. 17-T138N-R98W  
 CENTERLINE LENGTH 6339.89'-  
 384.24 RODS-18.19 ACRES  
 STA 3914+21.32 TO STA 3977+60.14



DATE OF AERIAL PHOTOGRAPHY  
 NOVEMBER 08, 2007  
 GEODIGITAL INTERNATIONAL



**PRELIMINARY**  
 PRINTED ON 07/22/2008

REV	DESCRIPTION	DRWN	DSGN	APPD	DATE	REV	DESCRIPTION	DRWN	DSGN	APPD	DATE	DESIGN INFORMATION		DESIGN BY:	DATE	FACILITY:	LOCATION UNIT:	SCALE:	COUNTY NAME:		
1		-	-	-	-	5						STATE NAME: NORTH DAKOTA	ZONE: 3302 SOUTH	DAM	07/22/2008	TRANSMISSION SYSTEM MAINTENANCE	181 - RHAME SUB TO BELFIELD SUB - 230 KV LINE	AS SHOWN	SLOPE		
2		-	-	-	-							CONDUCTOR	1272 MCM ACSR								
3		-	-	-	-							OHGW	7/16" E.H.S. STEEL								
4		-	-	-	-							OPGW	AC 86/596								
														DRAWN BY:	CDB						
														DESIGN CHK:	-						
														DRAFT CHK:							
														APPROVED:							
RHAME TO BELFIELD TRANSMISSION PROJECT																		BASIN DRAWING NO.	181-90-T3-074	REV.	0