

Hamre, John G.

From: Bauske, Shelly A.
Sent: Monday, July 12, 2010 10:20 AM
To: Hamre, John G.
Subject: FW: Rhame/Belfield weekly progress report 071010
Attachments: wr071010.pdf

RECEIVED

JUL 12 2010

PUBLIC SERVICE COMMISSION

From: Rick Mucha [mailto:RMucha@bepc.com]
Sent: Monday, July 12, 2010 9:49 AM
To: Alan Burgard; Cory Bauer; Deborah Levchak; Duey Marthaller; Gary Bindert (addison3@q.com); Gary Stoddard; Lein, Jerry R.; Joseph Volk; Kelly Schafer; Kevin Solie; Mark Nygard; Megan Milbradt; Mike Murray; Pius Fischer; -Info-Public Service Commission; Rob McAdoo; Shad Erdmann; Shane Vasbinder
Subject: Rhame/Belfield weekly progress report 071010

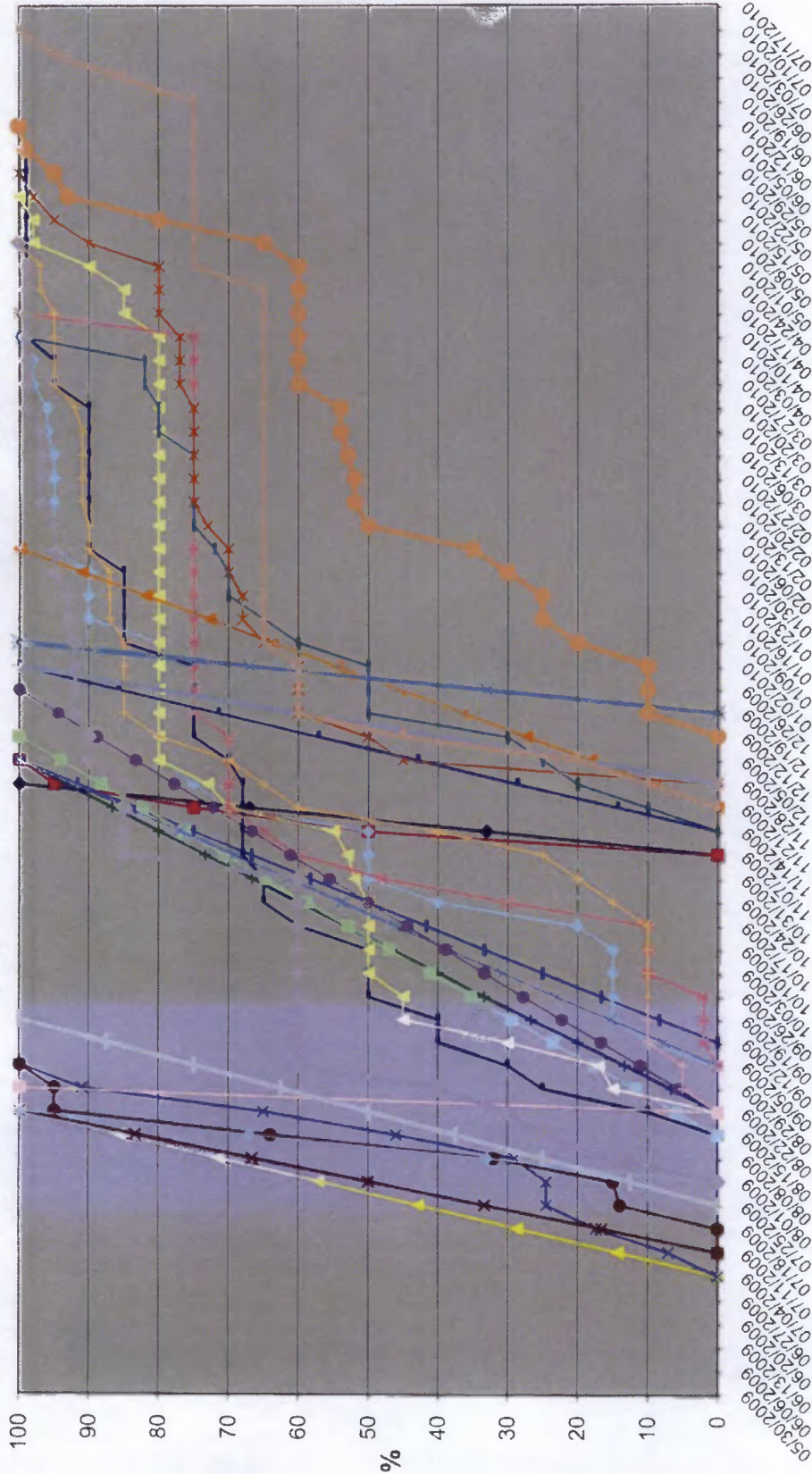
Progress report attached.

Consider this the last progress report for this project as only punch list items remain at this time.

RJM

107 **PU-07-169** Filed: 7/12/2010 Pages: 2
**Rhame to Belfield Basin Electric T-line Progress
report week ending 7-10-2010**

Rhame Substation Construction Rev. #2



- Fencing Completed
- Fencing Scheduled
- Control Building Completed
- Control Building Scheduled
- Ground Grid Completed
- Ground Grid Scheduled
- CB Equipment Completed
- CB Equipment Scheduled
- Yard surfacing Completed
- Yard surfacing Scheduled
- Formed Concrete Completed
- Formed Concrete Scheduled
- Trench & Conduit Completed
- Trench & Conduit Scheduled
- Buswork Completed
- Buswork Scheduled
- Suprv & Comm Completed
- Suprv & Comm Scheduled
- Drilled Piers Completed
- Drilled Piers Scheduled
- Structure Erection Completed
- Structure Erection Scheduled
- Yard Equipment Completed
- Yard Equipment Scheduled
- Cable Installation Completed
- Cable Installation Scheduled
- Microwave installation Completed
- Microwave installation Scheduled