

NW 1/4
SEC. 14 T131N R104W
BOWMAN CO., NORTH DAKOTA

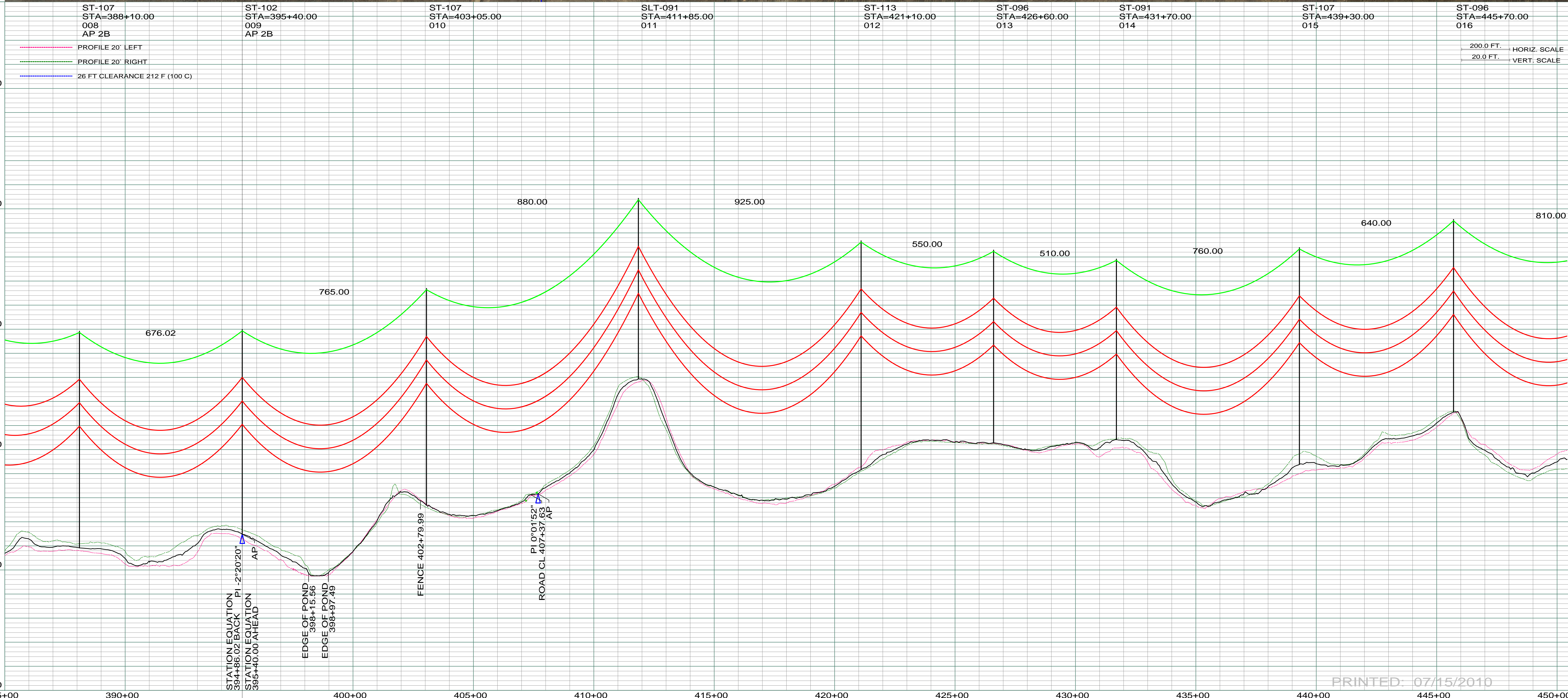
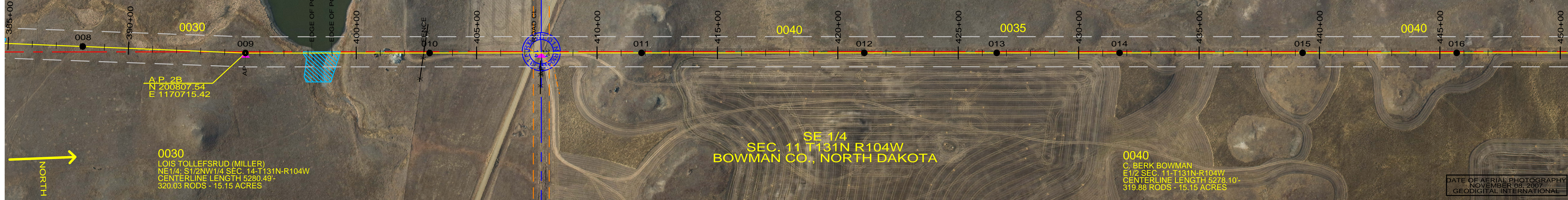
0035
ROBERT & CONNIE OSENDORF
W1/2 SEC. 11-T131N-R104W
LENGTH 5278.20-319.89 RODS-7.57 ACRES
STA 407+63.61 TO STA 460+40.92

SE 1/4
SEC. 11 T131N R104W
BOWMAN CO., NORTH DAKOTA

0040
C. BERK BOWMAN
E1/2 SEC. 11-T131N-R104W
CENTERLINE LENGTH 5278.10-
319.88 RODS - 15.15 ACRES

0030
LOIS TOLLEFSRUD (MILLER)
NE1/4, S1/2NW1/4 SEC. 14-T131N-R104W
CENTERLINE LENGTH 5280.49-
320.03 RODS - 15.15 ACRES

DATE OF AERIAL PHOTOGRAPHY
NOVEMBER 09, 2007
GEODIGITAL INTERNATIONAL



PRINTED: 07/15/2010

REV	DESCRIPTION	DRWN	DSGN	APPD	DATE	REV	DESCRIPTION	DRWN	DSGN	APPD	DATE
1	ISSUE TO PUBLIC SERVICE COMMISSION	CDB	CDB	DAM	09-05-08						
2	CREATED AP 2B FOR RE-ROUTE OF AP 2A, UPDATED R-O-W, RELEASED FOR BID	CDB	CDB	DAM	01-15-09						
3	ISSUED FOR CONSTRUCTION	CDB	CDB	DAM	03-30-09						
4	AS-BUILT	CDB	CDB	DAM	07-16-10						

DESIGN INFORMATION		DESIGN BY:		FACILITY:	
CONDUCTOR	1272 MCM 45/7 ACSR	DAM/CDB	08-08-08	TRANSMISSION SYSTEM MAINTENANCE	
OPGW	AC-71/571	DRAWN BY:	CDB	181-230KV LINE-RHAME SUBSTATION TO BELFIELD SUBSTATION	
		DESIGN CHK:	SW/ULTEIG	RHAME TO BELFIELD 230KV TRANSMISSION LINE	
		DRAFT CHK:		SCALE: AS SHOWN	
		APPROVED:	DAM	COUNTY NAME: BOWMAN	
				BASIN DRAWING NO. 181-090-T3-003	
				REV. 4	