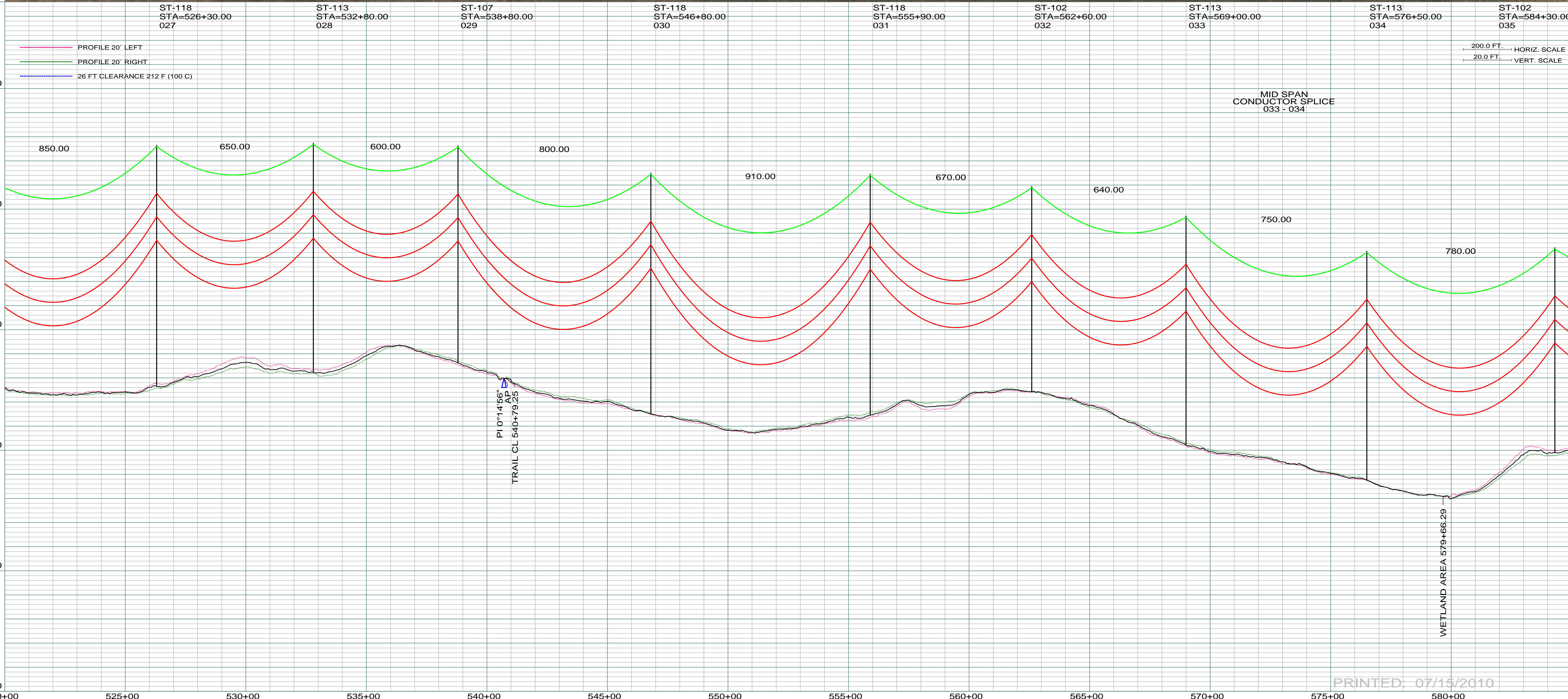
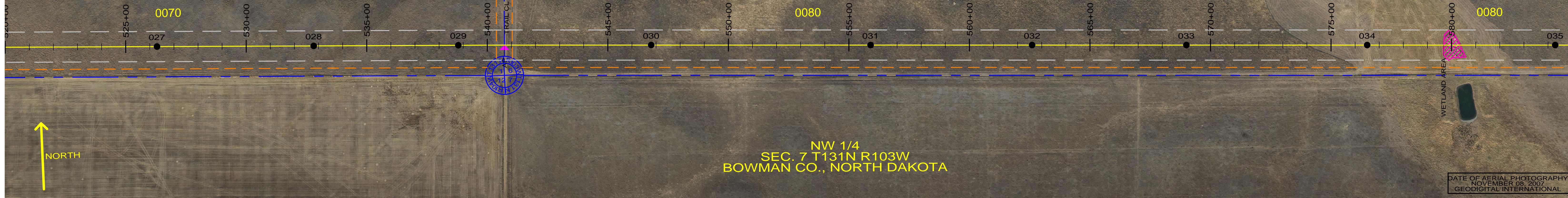


0070
 BRUCE T. BOWMAN
 SE 1/4 SEC. 1-T131N-R104W
 CENTERLINE LENGTH 2632.44'
 159.54 RODS - 7.55 ACRES

0080
 JAMES & LAVONNE LUTZ
 S 1/2 SEC. 6-T131N-R103W
 CENTERLINE LENGTH 5205.29-315.47 RODS-14.94 ACRES

NW 1/4
 SEC. 7 T131N R103W
 BOWMAN CO., NORTH DAKOTA

DATE OF AERIAL PHOTOGRAPHY
 NOVEMBER 08, 2007
 GEODIGITAL INTERNATIONAL



PRINTED: 07/15/2010

REV	DESCRIPTION	DRWN	DSGN	APPD	DATE	REV	DESCRIPTION	DRWN	DSGN	APPD	DATE
1	ISSUE TO PUBLIC SERVICE COMMISSION	CDB	CDB	DAM	09-05-08						
2	UPDATED RIGHT-OF-WAY, RELEASED FOR BID	CDB	CDB	DAM	01-15-09						
3	ISSUED FOR CONSTRUCTION	CDB	CDB	DAM	03-30-09						
4	AS-BUILT	CDB	CDB	DAM	07-16-10						

DESIGN INFORMATION		DESIGN BY:	DATE
CONDUCTOR	1272 MCM 45/7 ACSR	DAM/CDB	08-08-08
OPGW	AC-71/571	CDB	08-08-08
STRINGING TENSION		DESIGN CHK:	08-08-08
NESC TENSION	0	DRAFT CHK:	
DESIGN RULING SPAN	800	APPROVED:	09-05-08
ACTUAL RULING SPAN	0		

STATE NAME: NORTH DAKOTA		NAD83 NDSPCS INTL FT SOUTH ZONE	
FACILITY:	TRANSMISSION SYSTEM MAINTENANCE	SCALE:	COUNTY NAME:
LOCATION UNIT:	181-230KV LINE-RHAME SUBSTATION TO BELFIELD SUBSTATION	AS SHOWN	BOWMAN
RHAME TO BELFIELD 230KV TRANSMISSION LINE		BASIN DRAWING NO.	REV.
PLAN AND PROFILE		181-090-T3-006	4
MILE 3 & 4			