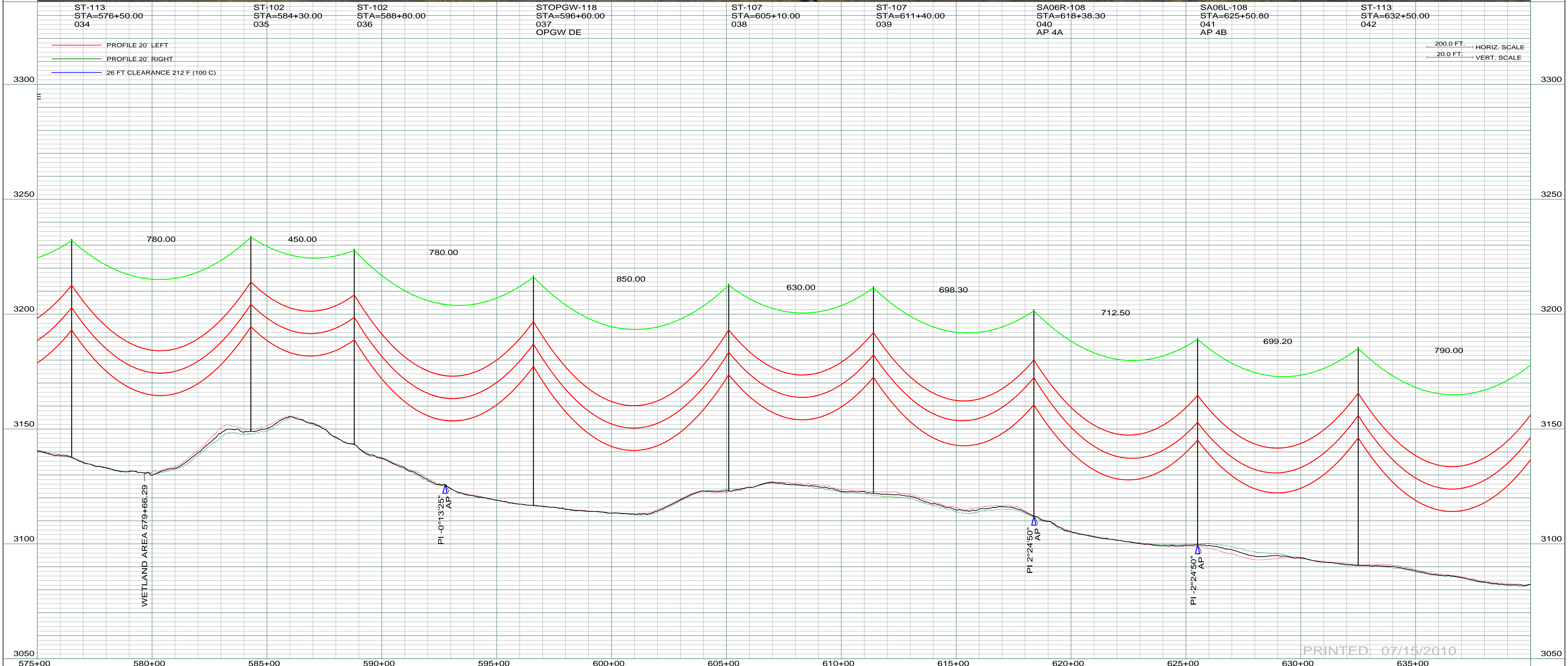


NW 1/4
SEC. 8 T131N R103W
BOWMAN CO., NORTH DAKOTA

DATE OF AERIAL PHOTOGRAPHY
NOVEMBER 09, 2007
GEODIGITAL INTERNATIONAL



200.0 FT. - HORIZ. SCALE
20.0 FT. - VERT. SCALE

PRINTED: 07/15/2010

REV	DESCRIPTION	DRWN	DSGN	APPD	DATE	REV	DESCRIPTION	DRWN	DSGN	APPD	DATE
1	ISSUE TO PUBLIC SERVICE COMMISSION	CDB	CDB	DAM	09-05-08						
2	UPDATED RIGHT-OF-WAY, RELEASED FOR BID	CDB	CDB	DAM	01-15-09						
3	ISSUED FOR CONSTRUCTION	CDB	CDB	DAM	03-30-09						
4	AS-BUILT	CDB	CDB	DAM	07-16-10						

DESIGN INFORMATION		DESIGN BY:	DATE
CONDUCTOR	1272 MCM 45/7 ACSR	DAM/CDB	08-08-08
OPGW	AC-71/571	CDB	08-08-08
		DESIGN CHK:	08-08-08
		DRAFT CHK:	
		APPROVED:	09-05-08

DESIGN INFORMATION		FACILITY:	
STATE NAME:	NORTH DAKOTA	TRANSMISSION SYSTEM MAINTENANCE	
NAD83 NDSPCS INTL FT SOUTH ZONE		LOCATION UNIT:	
		181-230KV LINE-RHAME SUBSTATION TO BELFIELD SUBSTATION	
		RHAME TO BELFIELD 230KV TRANSMISSION LINE	
		SCALE: AS SHOWN	
		COUNTY NAME: BOWMAN	
		BASIN DRAWING NO. 181-090-T3-007	
		REV. 4	