

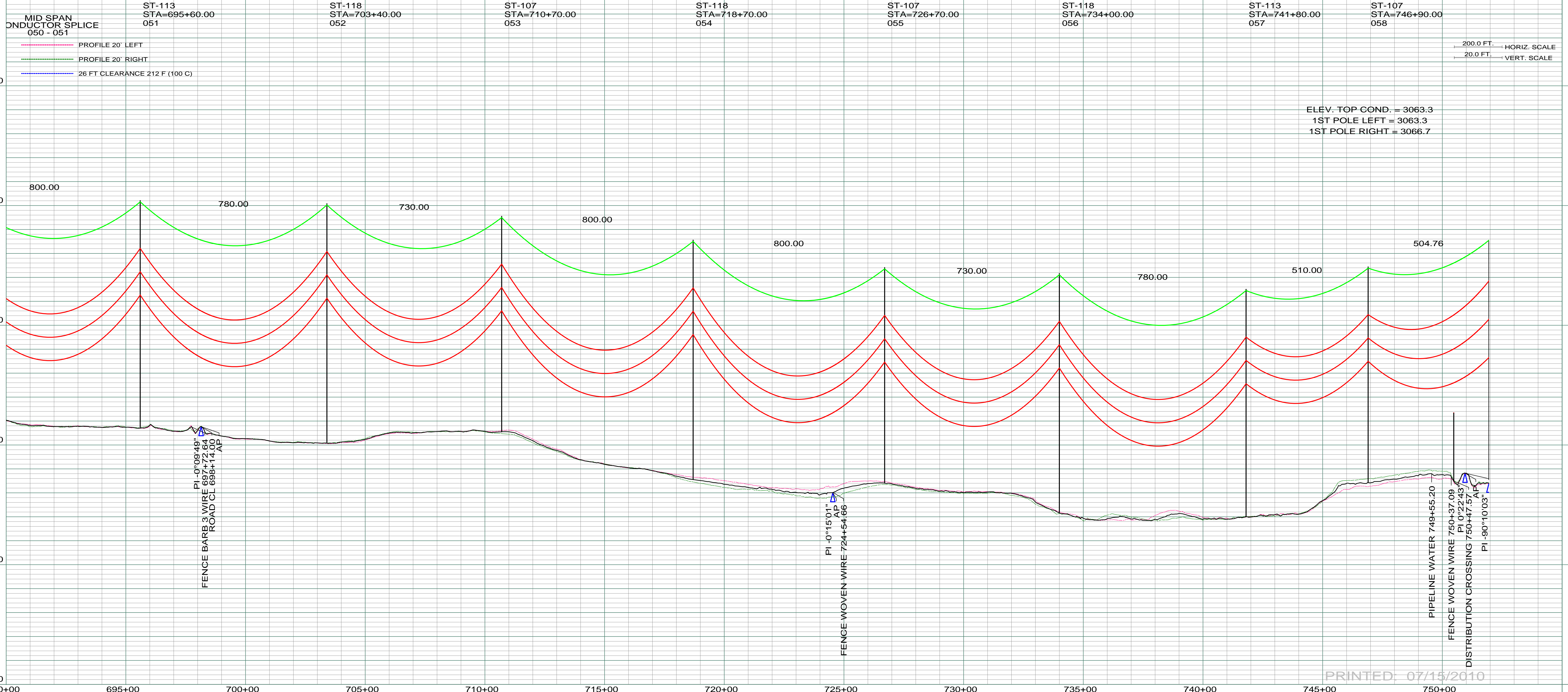
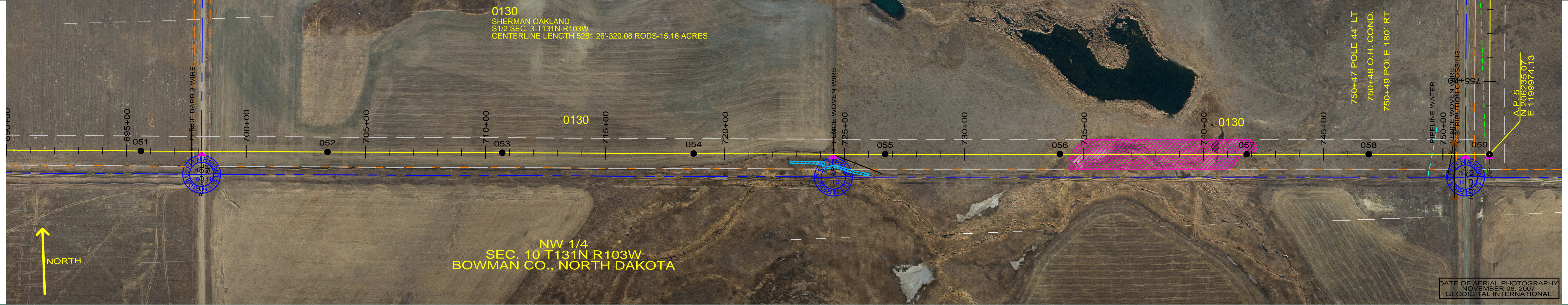
0130
 SHERMAN OAKLAND
 S1/2 SEC. 3-T131N-R103W
 CENTERLINE LENGTH 5281.26'-320.08 RODS-15.16 ACRES

NW 1/4
 SEC. 10 T131N R103W
 BOWMAN CO., NORTH DAKOTA

750+47 POLE 44' LT
 750+48 O.H. COND.
 750+49 POLE 180' RT

AP 5
 205335.07
 E 1199974.13

DATE OF AERIAL PHOTOGRAPHY
 NOVEMBER 09, 2007
 GEODIGITAL INTERNATIONAL



ELEV. TOP COND. = 3063.3
 1ST POLE LEFT = 3063.3
 1ST POLE RIGHT = 3066.7

200.0 FT. - HORIZ. SCALE
 20.0 FT. - VERT. SCALE

PRINTED: 07/15/2010

REV	DESCRIPTION	DRWN	DSGN	APPD	DATE	REV	DESCRIPTION	DRWN	DSGN	APPD	DATE
1	ISSUE TO PUBLIC SERVICE COMMISSION	CDB	CDB	DAM	09-05-08						
2	RELEASED FOR BID	CDB	CDB	DAM	01-15-09						
3	ISSUED FOR CONSTRUCTION	CDB	CDB	DAM	03-30-09						
4	AS-BUILT	CDB	CDB	DAM	07-16-10						

STATE NAME	NAD83 NDSPCS INTL FT SOUTH ZONE	DESIGN BY:	DATE:
NORTH DAKOTA		DAM/CDB	08-08-08
DESIGN INFORMATION			
CONDUCTOR	SIZE	STRINGING TENSION	NESC TENSION
1272 MCM 45/7 ACSR			0
OPGW	AC-71/571	DESIGN RULING SPAN	ACTUAL RULING SPAN
		800	0

DESIGN BY:	DATE:	DESIGN CHECK:	DATE:	DRAFT CHECK:	DATE:	APPROVED:	DATE:
DAM/CDB	08-08-08	SW/ULTEIG	08-08-08			DAM	09-05-08

FACILITY:	LOCATION UNIT:	SCALE:	COUNTY NAME:
TRANSMISSION SYSTEM MAINTENANCE	181-230KV LINE-RHAME SUBSTATION TO BELFIELD SUBSTATION	AS SHOWN	BOWMAN
RHAME TO BELFIELD 230KV TRANSMISSION LINE		PLAN AND PROFILE	
MILE 6 & 7		BASIN DRAWING NO. 181-090-T3-009	

REV.	DESCRIPTION
4	