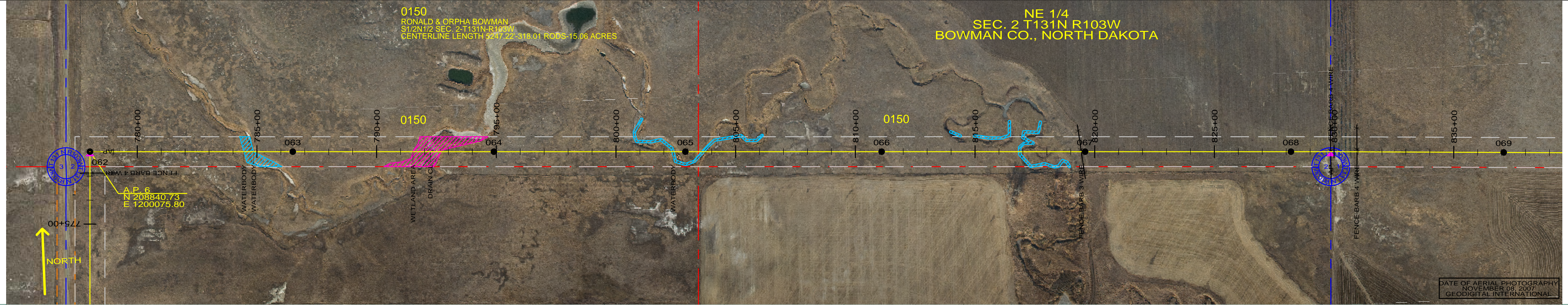
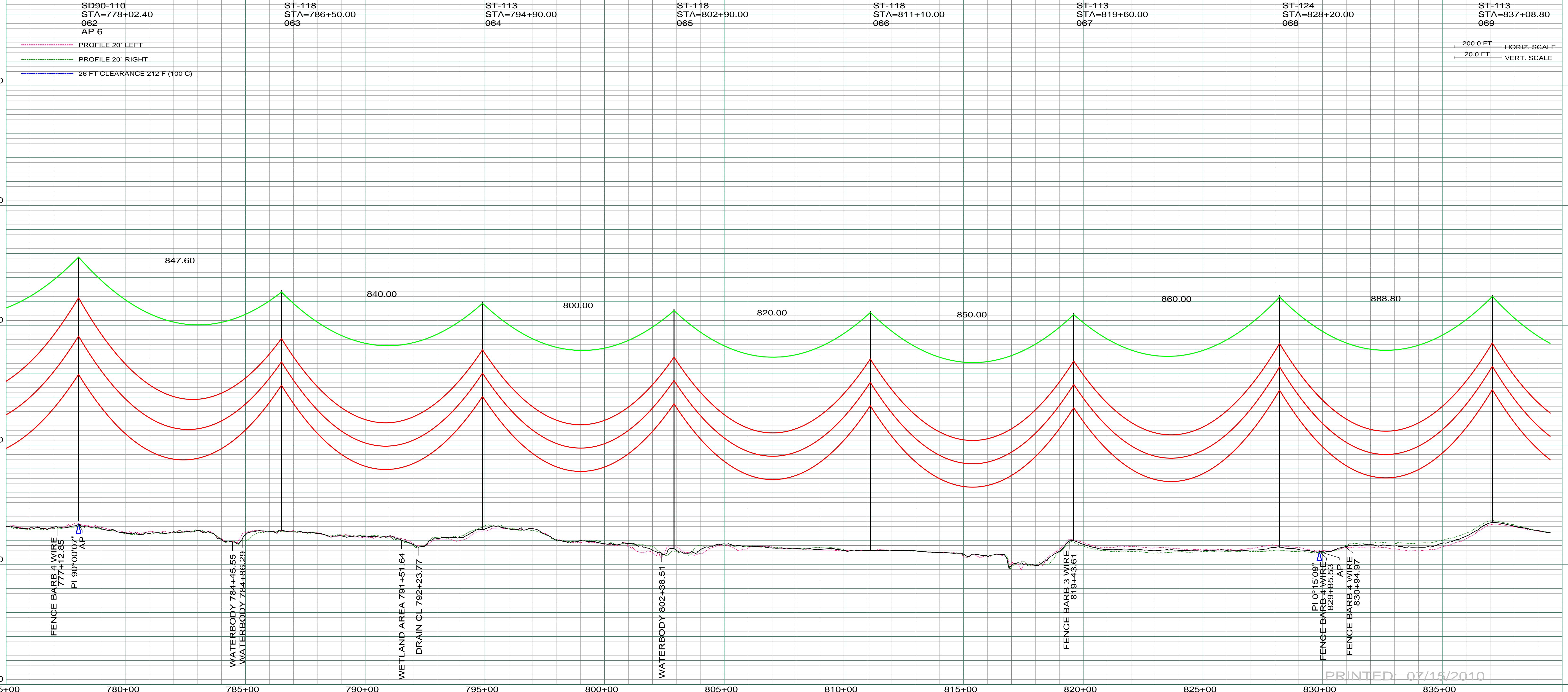


RONALD & ORPHA BOWMAN  
S1/2N1/2 SEC. 2-T131N-R103W  
CENTERLINE LENGTH 5247.22-318.01 RODS-15.06 ACRES

NE 1/4  
SEC. 2 T131N R103W  
BOWMAN CO., NORTH DAKOTA



DATE OF AERIAL PHOTOGRAPHY  
NOVEMBER 09, 2007  
GEODIGITAL INTERNATIONAL



REV	DESCRIPTION	DRWN	DSGN	APPD	DATE
1	ISSUE TO PUBLIC SERVICE COMMISSION	CDB	CDB	DAM	09-05-08
2	RELEASED FOR BID	CDB	CDB	DAM	01-15-09
3	ISSUED FOR CONSTRUCTION	CDB	CDB	DAM	03-30-09
4	AS-BUILT	CDB	CDB	DAM	07-16-10

REV	DESCRIPTION	DRWN	DSGN	APPD	DATE
1	ST-118 STA=778+02.40 062 AP 6				
2	ST-118 STA=786+50.00 063				
3	ST-113 STA=794+90.00 064				
4	ST-118 STA=802+90.00 065				
5	ST-118 STA=811+10.00 066				
6	ST-113 STA=819+60.00 067				
7	ST-124 STA=828+20.00 068				
8	ST-113 STA=837+08.80 069				

DESIGN INFORMATION	
CONDUCTOR	SIZE
1272 MCM 45/7 ACSR	1272 MCM 45/7 ACSR
OPGW	AC-71/571

DESIGN INFORMATION	
STRINGING TENSION	NESC TENSION
0	0
DESIGN RULING SPAN	ACTUAL RULING SPAN
800	0

DESIGN INFORMATION	
DESIGN BY:	DATE
DAM/CDB	08-08-08
DRAWN BY:	DATE
CDB	08-08-08
DESIGN CHK:	DATE
SW/ULTEIG	08-08-08
DRAFT CHK:	DATE
APPROVED:	DATE
DAM	09-05-08

DESIGN INFORMATION	
STATE NAME:	NAD83 NDCPCS INTL FT SOUTH ZONE
NORTH DAKOTA	NAD83 NDCPCS INTL FT SOUTH ZONE
DESIGN INFORMATION	
DESIGN BY:	DATE
DAM/CDB	08-08-08
DRAWN BY:	DATE
CDB	08-08-08
DESIGN CHK:	DATE
SW/ULTEIG	08-08-08
DRAFT CHK:	DATE
APPROVED:	DATE
DAM	09-05-08

FACILITY: TRANSMISSION SYSTEM MAINTENANCE  
 LOCATION UNIT: 181-230KV LINE-RHAME SUBSTATION TO BELFIELD SUBSTATION  
**RHAME TO BELFIELD 230KV TRANSMISSION LINE**  
 SCALE: AS SHOWN COUNTY NAME: BOWMAN  
 BASIN DRAWING NO. 181-090-T3-011 REV. 4  
 MILE 8 & 9

PRINTED: 07/15/2010