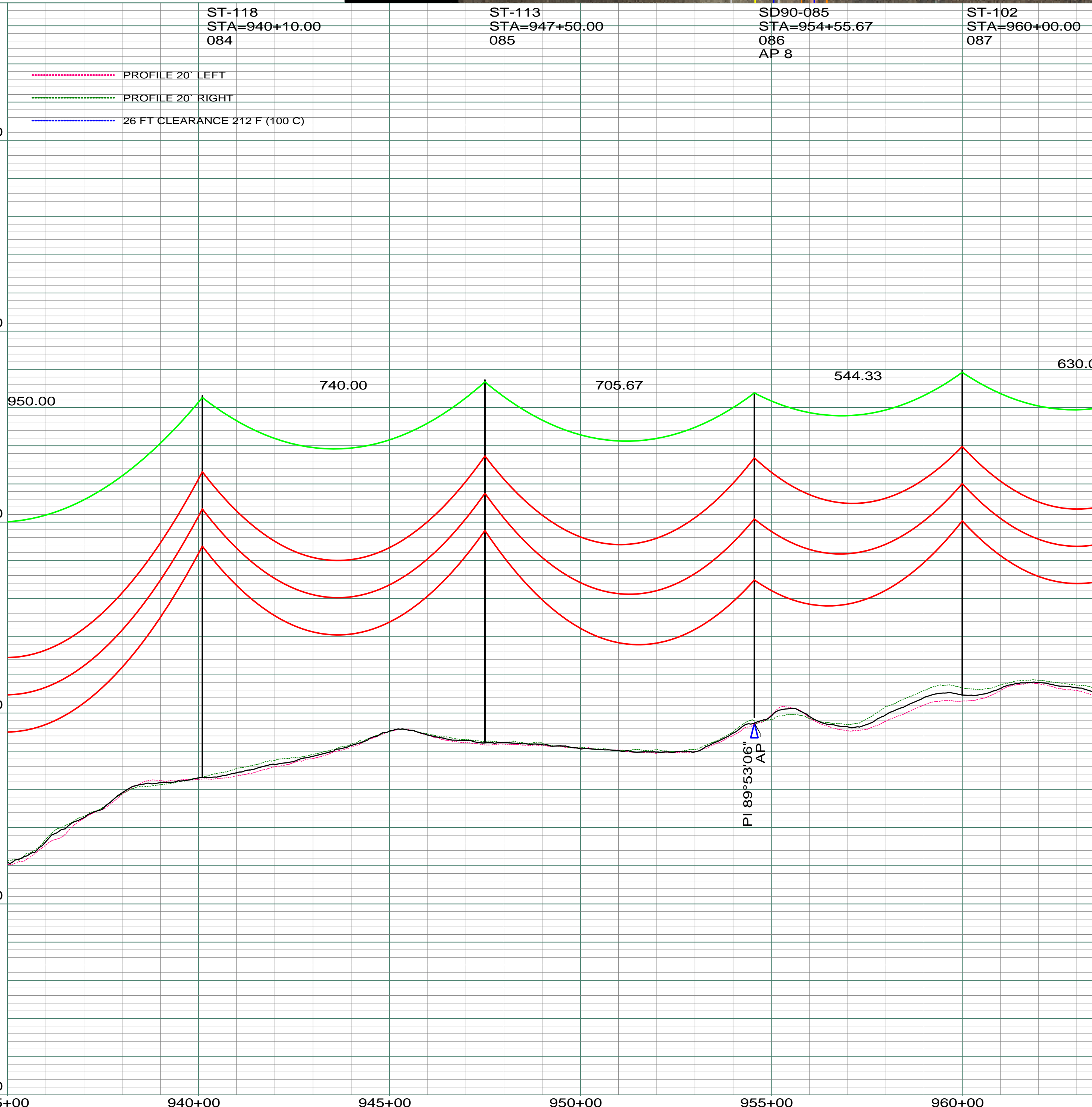


DATE OF AERIAL PHOTOGRAPHY  
NOVEMBER 08, 2007  
GEODIGITAL INTERNATIONAL



200.0 FT. ———— HORIZ. SCALE  
20.0 FT. ———— VERT. SCALE

PRINTED: 07/15/2010

REV	DESCRIPTION	DRWN	DSGN	APPD	DATE	REV	DESCRIPTION	DRWN	DSGN	APPD	DATE
1	ISSUE TO PUBLIC SERVICE COMMISSION	CDB	CDB	DAM	09-05-08						
2	RELEASED FOR BID	CDB	CDB	DAM	01-15-09						
3	ISSUED FOR CONSTRUCTION	CDB	CDB	DAM	03-30-09						
4	AS-BUILT	CDB	CDB	DAM	07-16-10						

DESIGN INFORMATION		DESIGN BY:	DATE
CONDUCTOR	1272 MCM 45/7 ACSR	DAM/CDB	08-08-08
OPGW	AC-71/571	CDB	08-08-08
		SW/ULTEIG	08-08-08
		DAM	09-05-08

FACILITY:	TRANSMISSION SYSTEM MAINTENANCE
LOCATION UNIT:	181-230KV LINE-RHAME SUBSTATION TO BELFIELD SUBSTATION
RHAME TO BELFIELD 230KV TRANSMISSION LINE	
PLAN AND PROFILE	
MILE 11	

 BASIN ELECTRIC POWER COOPERATIVE 1717 EAST INTERSTATE AVENUE BISMARCK, NORTH DAKOTA PHONE 701-223-0441	SCALE:	COUNTY NAME:
	AS SHOWN	BOWMAN
BASIN DRAWING NO.	REV.	
181-090-T3-014	4	