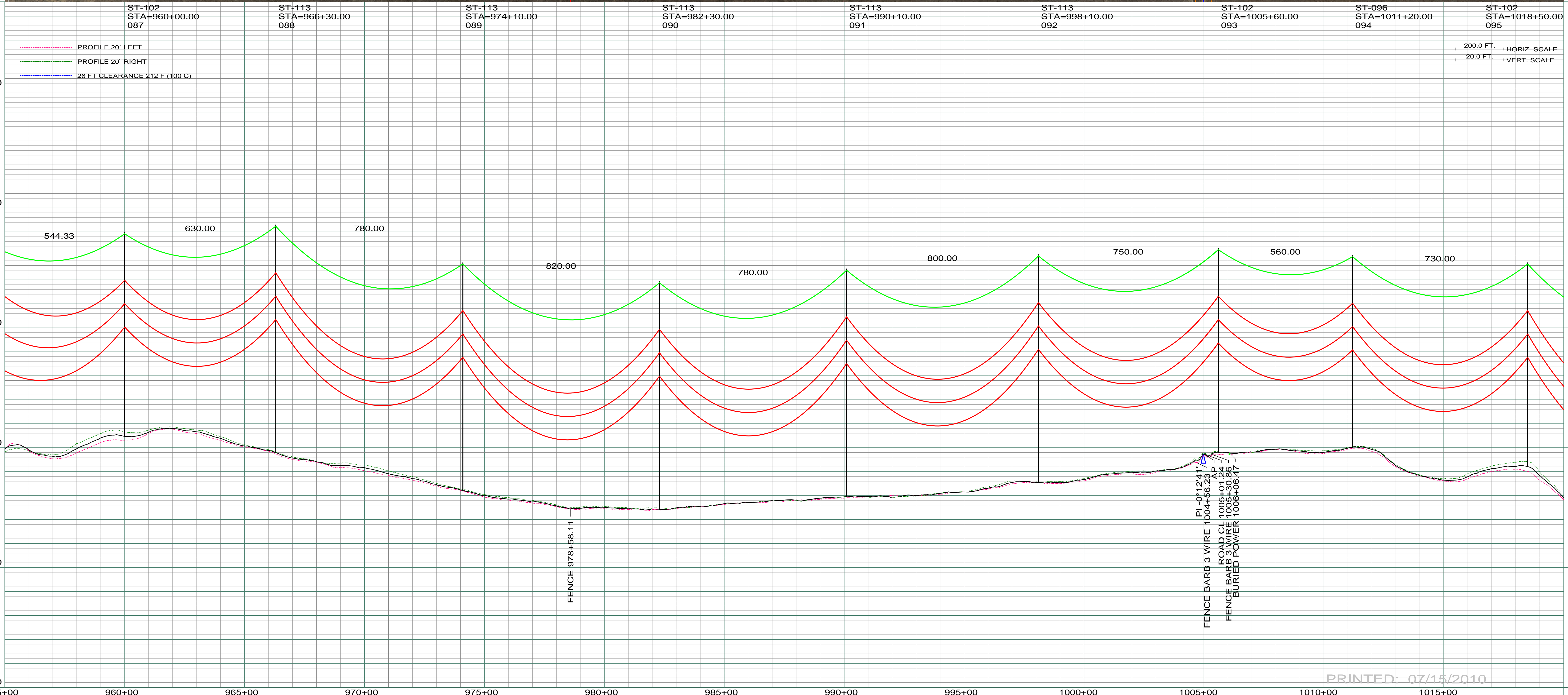


DATE OF AERIAL PHOTOGRAPHY
NOVEMBER 09, 2007
GEODIGITAL INTERNATIONAL



PRINTED: 07/15/2010

REV	DESCRIPTION	DRWN	DSGN	APPD	DATE	REV	DESCRIPTION	DRWN	DSGN	APPD	DATE
1	ISSUE TO PUBLIC SERVICE COMMISSION	CDB	CDB	DAM	09-05-08						
2	RELEASED FOR BID	CDB	CDB	DAM	01-15-09						
3	ISSUED FOR CONSTRUCTION	CDB	CDB	DAM	03-30-09						
4	AS-BUILT	CDB	CDB	DAM	07-16-10						

STATE NAME: NORTH DAKOTA		NAD83 NDSPCS INTL FT SOUTH ZONE	
DESIGN BY:	DAM/CDB	08-08-08	FACILITY: TRANSMISSION SYSTEM MAINTENANCE
DRAWN BY:	CDB	08-08-08	LOCATION UNIT: 181-230KV LINE-RHAME SUBSTATION TO BELFIELD SUBSTATION
DESIGN CHK:	SW/ULTEIG	08-08-08	RHAME TO BELFIELD 230KV TRANSMISSION LINE
DRAFT CHK:			SCALE: AS SHOWN
APPROVED:	DAM	09-05-08	COUNTY NAME: BOWMAN
			BASIN DRAWING NO. 181-090-T3-015
			REV. 4