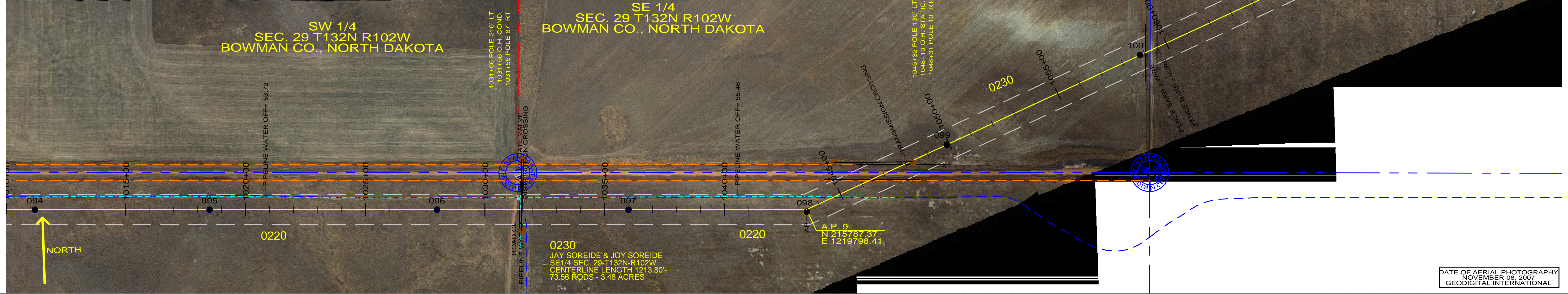


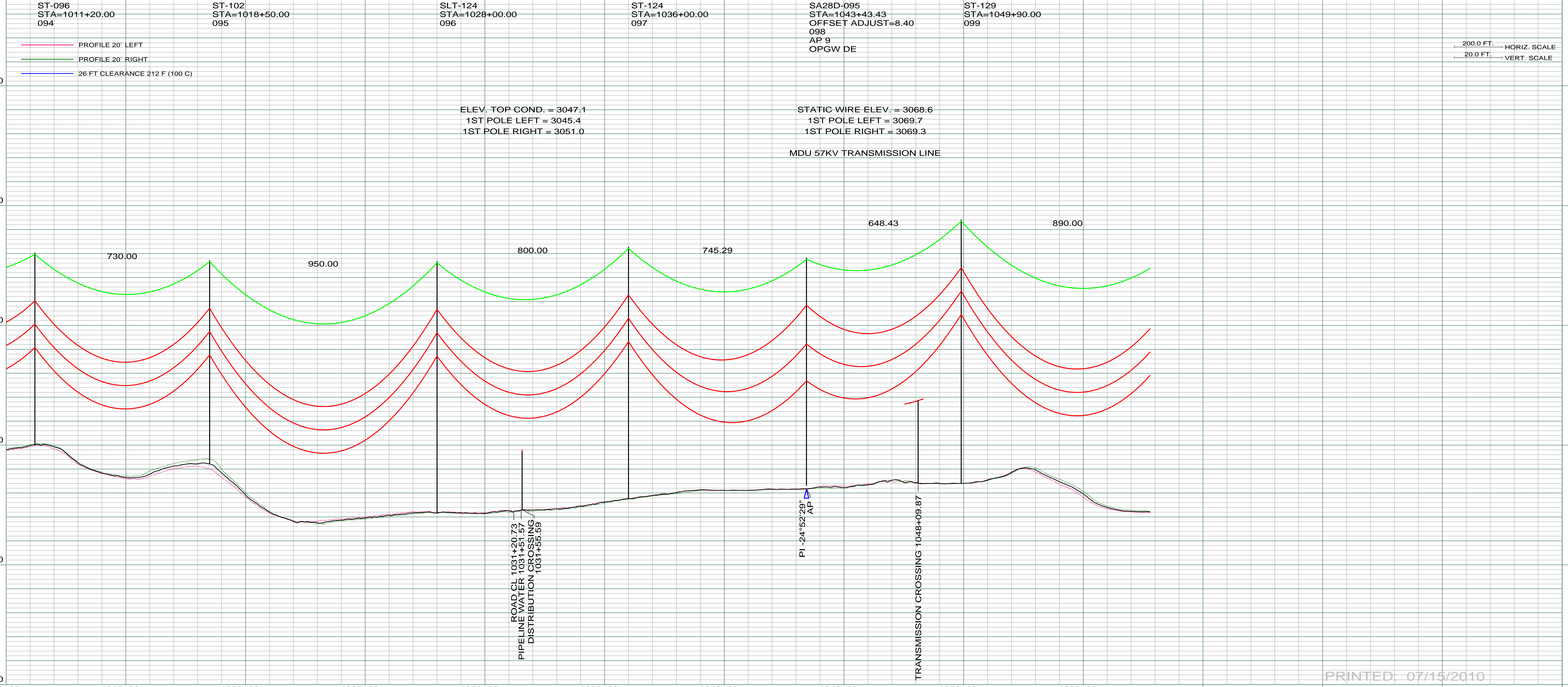
SW 1/4  
SEC. 29 T132N R102W  
BOWMAN CO., NORTH DAKOTA

SE 1/4  
SEC. 29 T132N R102W  
BOWMAN CO., NORTH DAKOTA

0230  
JAY SOREIDE & JOY SOREIDE  
SE 1/4 SEC. 29 T132N R102W  
CENTERLINE LENGTH 1213.80'  
73.56 RODS = 3.48 ACRES



DATE OF AERIAL PHOTOGRAPHY  
NOVEMBER 08, 2007  
GEODIGITAL INTERNATIONAL



200.0 FT. ———— HORIZ. SCALE  
20.0 FT. ———— VERT. SCALE

PRINTED: 07/15/2010

REV	DESCRIPTION	DRWN	DSGN	APPD	DATE	REV	DESCRIPTION	DRWN	DSGN	APPD	DATE
1	ISSUE TO PUBLIC SERVICE COMMISSION	CDB	CDB	DAM	09-05-08						
2	UPDATED TEXT, RELEASED FOR BID	CDB	CDB	DAM	01-15-09						
3	ISSUED FOR CONSTRUCTION	CDB	CDB	DAM	03-30-09						
4	AS-BUILT	CDB	CDB	DAM	07-16-10						

DESIGN INFORMATION	
SIZE	STRINGING TENSION
CONDUCTOR 1272 MCM 45/7 ACSR	0
OPGW AC-71/571	0

DESIGN INFORMATION		DESIGN INFORMATION	
DESIGN RULING SPAN	ACTUAL RULING SPAN	DESIGN BY:	DATE
800	0	DAM/CDB	08-08-08
		DRAWN BY:	DATE
		CDB	08-08-08
		DESIGN CHK:	DATE
		SW/ULTEIG	08-08-08
		DRAFT CHK:	
		APPROVED:	DATE
		DAM	09-05-08

FACILITY:	TRANSMISSION SYSTEM MAINTENANCE
LOCATION UNIT:	181-230KV LINE-RHAME SUBSTATION TO BELFIELD SUBSTATION
RHAME TO BELFIELD 230KV TRANSMISSION LINE	
PLAN AND PROFILE	
MILE 12 & 13	

SCALE:	COUNTY NAME:
AS SHOWN	BOWMAN
BASIN DRAWING NO.	REV.
181-090-T3-016	4