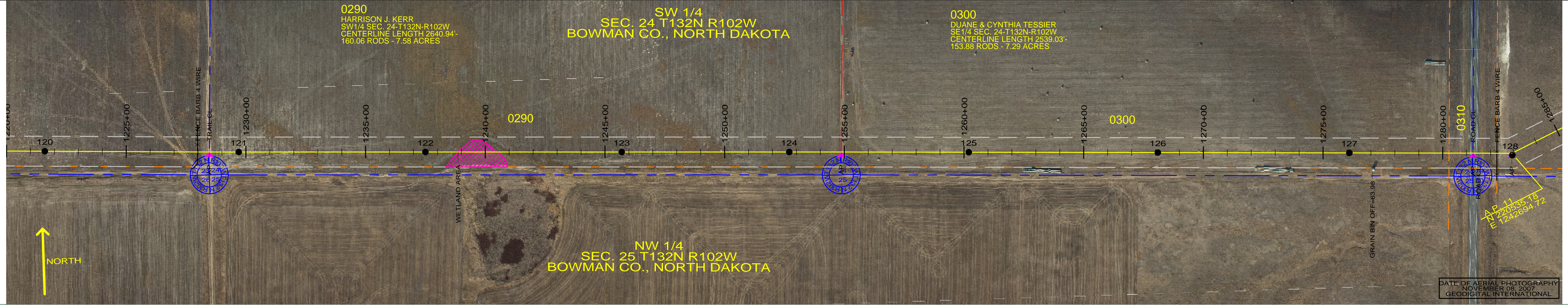


0290
HARRISON J. KERR
SW 1/4 SEC. 24-T132N-R102W
CENTERLINE LENGTH 2640.94'
160.06 RODS - 7.58 ACRES

SW 1/4
SEC. 24 T132N R102W
BOWMAN CO., NORTH DAKOTA

0300
DUANE & CYNTHIA TESSIER
SE 1/4 SEC. 24-T132N-R102W
CENTERLINE LENGTH 2539.03'
153.88 RODS - 7.29 ACRES

NW 1/4
SEC. 25 T132N R102W
BOWMAN CO., NORTH DAKOTA

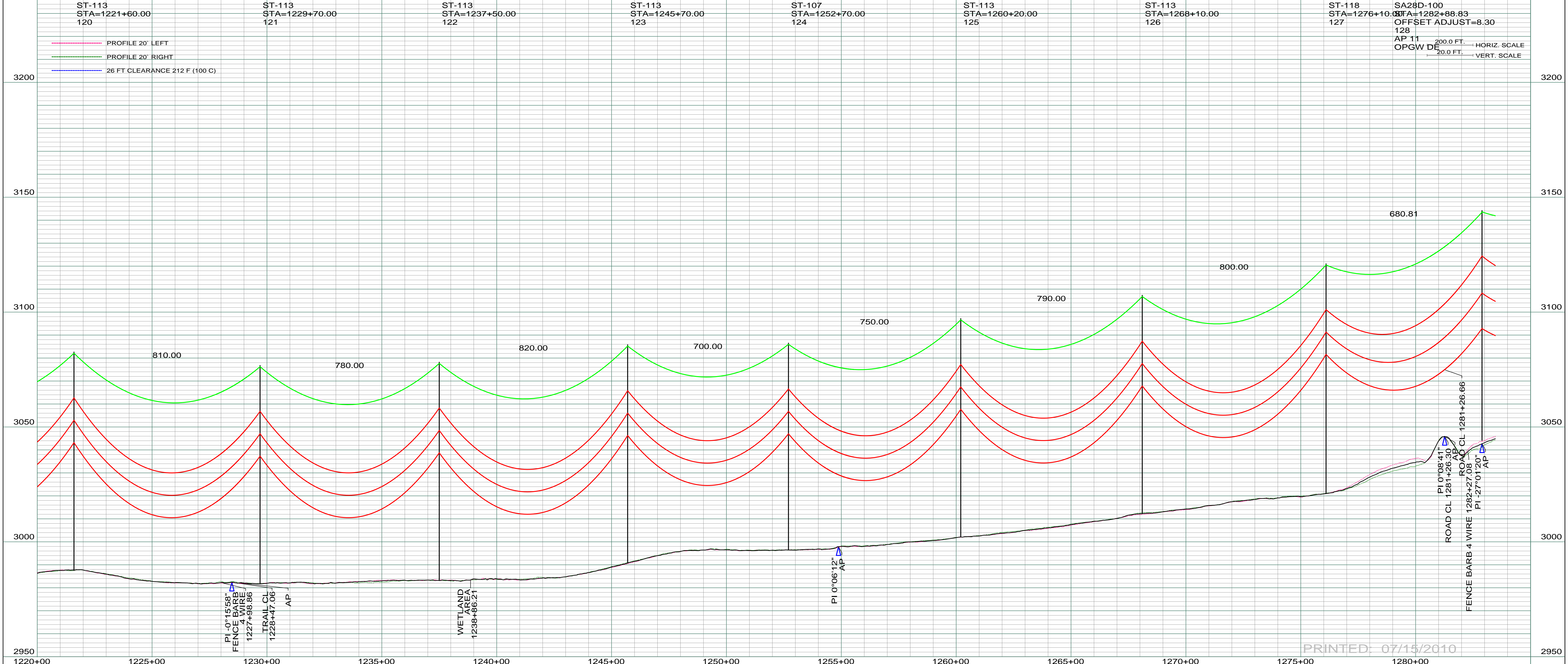


DATE OF AERIAL PHOTOGRAPHY
NOVEMBER 08, 2007
GEODIGITAL INTERNATIONAL

ST-113 STA=1221+60.00 120	ST-113 STA=1229+70.00 121	ST-113 STA=1237+50.00 122	ST-113 STA=1245+70.00 123	ST-107 STA=1252+70.00 124	ST-113 STA=1260+20.00 125	ST-113 STA=1268+10.00 126	ST-118 STA=1276+10.00 127	SA28D-100 STA=1282+88.83 OFFSET ADJUST=8.30 128 AP 11 OPGW DE
---------------------------------	---------------------------------	---------------------------------	---------------------------------	---------------------------------	---------------------------------	---------------------------------	---------------------------------	--

— PROFILE 20' LEFT
— PROFILE 20' RIGHT
— 26 FT CLEARANCE 212 F (100 C)

200.0 FT. - HORIZ. SCALE
20.0 FT. - VERT. SCALE



PRINTED: 07/15/2010

REV	DESCRIPTION	DRWN	DSGN	APPD	DATE	REV	DESCRIPTION	DRWN	DSGN	APPD	DATE
1	ISSUE TO PUBLIC SERVICE COMMISSION	CDB	CDB	DAM	09-05-08						
2	RELEASED FOR BID	CDB	CDB	DAM	01-15-09						
3	ISSUED FOR CONSTRUCTION	CDB	CDB	DAM	03-30-09						
4	AS-BUILT	CDB	CDB	DAM	07-16-10						

CONDUCTOR	SIZE	STRINGING TENSION	NESC TENSION	DESIGN RULING SPAN	ACTUAL RULING SPAN
	1272 MCM 45/7 ACSR		0	800	0
OPGW	AC-71/571		0		

DESIGN INFORMATION	DESIGN BY:	DATE
STATE NAME: NORTH DAKOTA	DAM/CDB	08-08-08
NAD83 NDSPCS INTL FT SOUTH ZONE	DRAWN BY:	08-08-08
	CDB	
	DESIGN CHK:	08-08-08
	SW/ULTEIG	
	DRAFT CHK:	
	APPROVED:	09-05-08
	DAM	

DESIGN INFORMATION	DESIGN BY:	DATE
STATE NAME: NORTH DAKOTA	DAM/CDB	08-08-08
NAD83 NDSPCS INTL FT SOUTH ZONE	DRAWN BY:	08-08-08
	CDB	
	DESIGN CHK:	08-08-08
	SW/ULTEIG	
	DRAFT CHK:	
	APPROVED:	09-05-08
	DAM	

DESIGN INFORMATION	DESIGN BY:	DATE
STATE NAME: NORTH DAKOTA	DAM/CDB	08-08-08
NAD83 NDSPCS INTL FT SOUTH ZONE	DRAWN BY:	08-08-08
	CDB	
	DESIGN CHK:	08-08-08
	SW/ULTEIG	
	DRAFT CHK:	
	APPROVED:	09-05-08
	DAM	

FACILITY: TRANSMISSION SYSTEM MAINTENANCE
LOCATION UNIT: 181-230KV LINE-RHAME SUBSTATION TO BELFIELD SUBSTATION

SCALE: AS SHOWN
COUNTY NAME: BOWMAN
BASIN DRAWING NO. 181-090-T3-020
REV. 4



BASIN ELECTRIC
POWER COOPERATIVE
1717 EAST INTERSTATE AVENUE
BISMARCK, NORTH DAKOTA
PHONE 701-223-0441