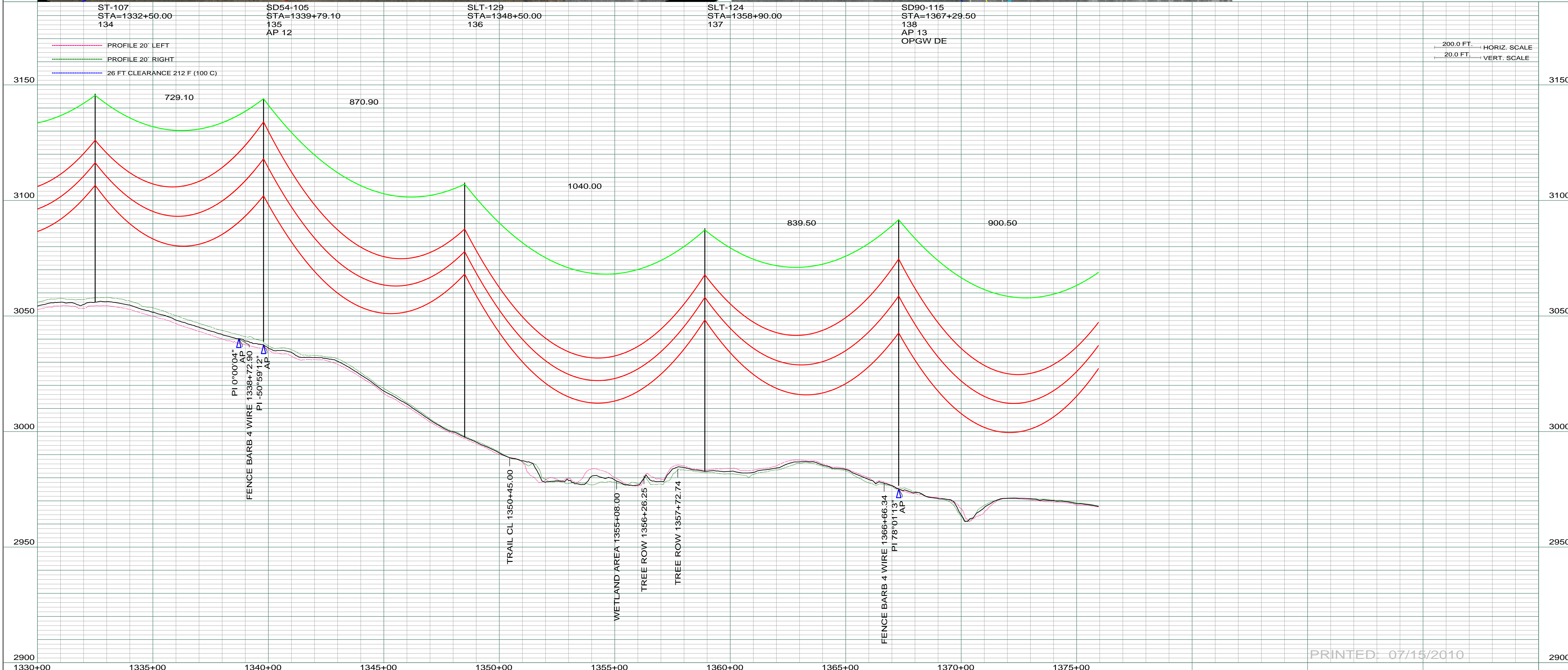




DATE OF AERIAL PHOTOGRAPHY
DOWNLOADED ON JULY 21, 2009
TERRASERVER

DATE OF AERIAL PHOTOGRAPHY
NOVEMBER 08, 2007
GEODIGITAL INTERNATIONAL



200.0 FT. ———— HORIZ. SCALE
20.0 FT. ———— VERT. SCALE

PRINTED: 07/15/2010

REV	DESCRIPTION	DRWN	DSGN	APPD	DATE	REV	DESCRIPTION	DRWN	DSGN	APPD	DATE
1	ISSUE TO PUBLIC SERVICE COMMISSION	CDB	CDB	DAM	09-05-08	5	AS-BUILT	CDB	CDB	DAM	07-16-10
2	RELEASED FOR BID	CDB	CDB	DAM	01-15-09						
3	ISSUED FOR CONSTRUCTION	CDB	CDB	DAM	03-30-09						
4	ADDED TERRASERVER IMAGERY, DATE OF PHOTOGRAPHY UNKNOWN	WVDB	CDB	DAM	07-21-09						

DESIGN INFORMATION		DESIGN BY:		FACILITY:	
CONDUCTOR	1272 MCM 45/7 ACSR	DAM/CDB	08-08-08	TRANSMISSION SYSTEM MAINTENANCE	
OPGW	AC-71/571	CDB	08-08-08	181-230KV LINE-RHAME SUBSTATION TO BELFIELD SUBSTATION	
STRINGING TENSION		DESIGN CHK:	08-08-08	RHAME TO BELFIELD 230KV TRANSMISSION LINE	
NESC TENSION	0	DRAFT CHK:		SCALE: AS SHOWN COUNTY NAME: BOWMAN	
DESIGN RULING SPAN	800	APPROVED:	09-05-08	PLAN AND PROFILE	
ACTUAL RULING SPAN	0			MILE 18 & 19	

BASIN ELECTRIC POWER COOPERATIVE
1717 EAST INTERSTATE AVENUE
BISMARCK, NORTH DAKOTA
PHONE 701-223-0441

SCALE: AS SHOWN COUNTY NAME: BOWMAN
BASIN DRAWING NO. 181-090-T3-022 REV. 5