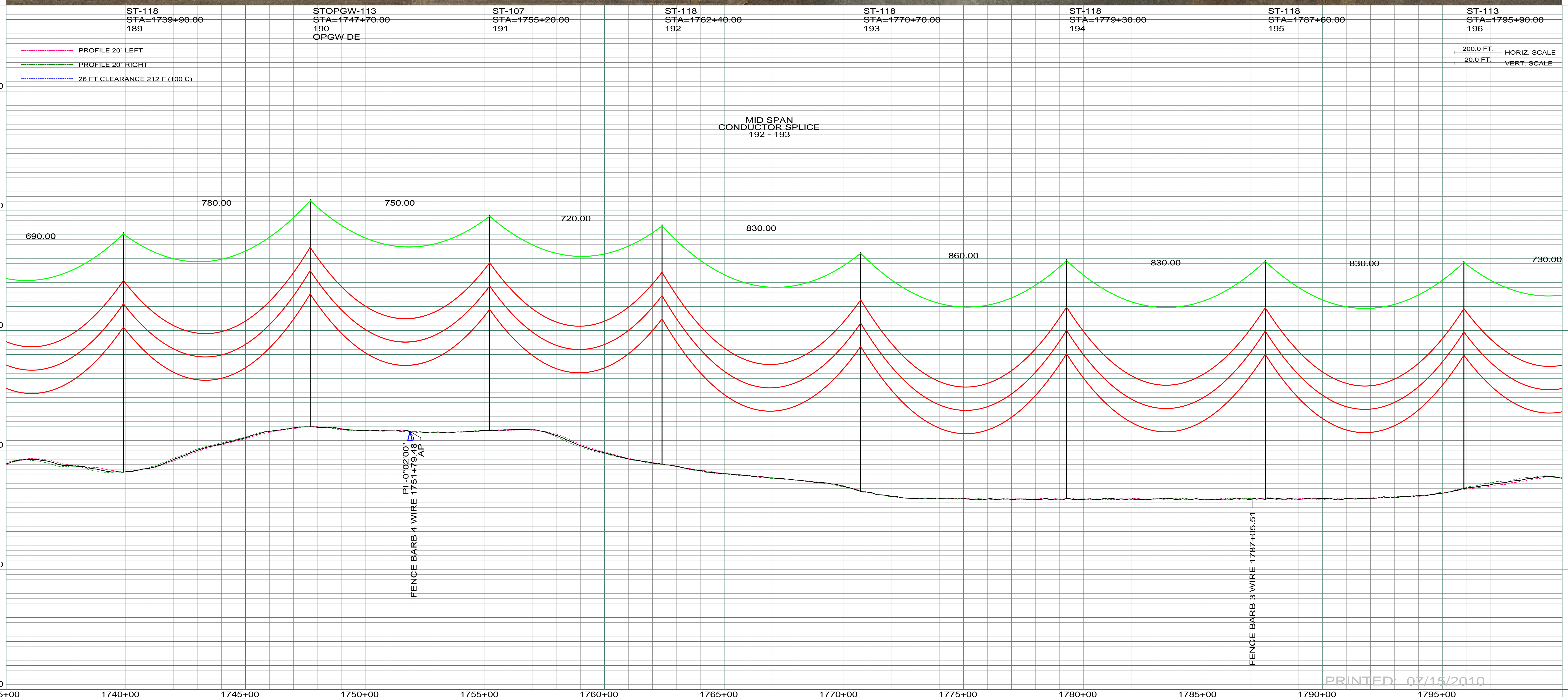
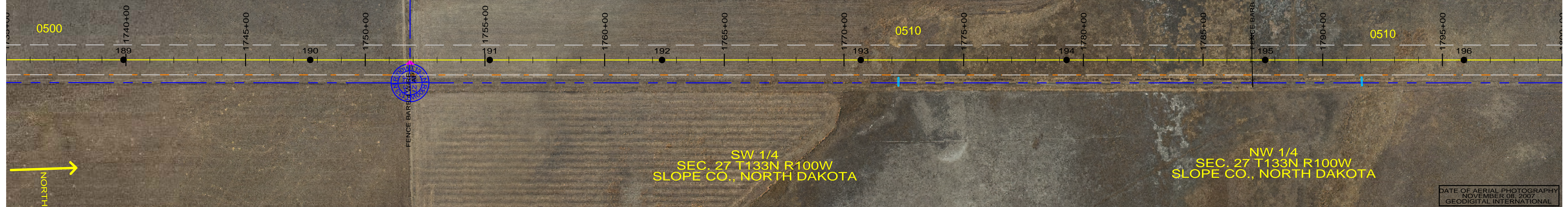


0510
 LYLE M. NARUM
 E1/2 LESS A TRACT SEC. 28-T133N-R100W
 CENTERLINE LENGTH 5274.77'
 319.68 RODS-15.14 ACRES

SW 1/4
 SEC. 27 T133N R100W
 SLOPE CO., NORTH DAKOTA

NW 1/4
 SEC. 27 T133N R100W
 SLOPE CO., NORTH DAKOTA

DATE OF AERIAL PHOTOGRAPHY
 NOVEMBER 08, 2007
 GEODIGITAL INTERNATIONAL



PRINTED: 07/15/2010

REV	DESCRIPTION	DRWN	DSGN	APPD	DATE	REV	DESCRIPTION	DRWN	DSGN	APPD	DATE
1	ISSUE TO PUBLIC SERVICE COMMISSION	CDB	CDB	DAM	09-05-08						
2	RELEASED FOR BID	CDB	CDB	DAM	01-15-09						
3	ISSUED FOR CONSTRUCTION	CDB	CDB	DAM	03-30-09						
4	AS-BUILT	CDB	CDB	DAM	07-16-10						

DESIGN INFORMATION					
CONDUCTOR	SIZE	STRINGING TENSION	NESC TENSION	DESIGN RULING SPAN	ACTUAL RULING SPAN
	1272 MCM 45/7 ACSR		0	800	0
OPGW	AC-71/571		0		

DESIGN INFORMATION			
DESIGN BY:	DATE	DESIGN CHK:	DATE
DAM/CDB	08-08-08	SW/ULTEIG	08-08-08
DRAWN BY:	DATE	DRAFT CHK:	DATE
CDB	08-08-08		
APPROVED:	DATE		
DAM	09-05-08		

FACILITY:	
LOCATION UNIT:	
SCALE:	
COUNTY NAME:	
BASIN DRAWING NO. REV.	
TRANSMISSION SYSTEM MAINTENANCE	
181-230KV LINE-RHAME SUBSTATION TO BELFIELD SUBSTATION	
AS SHOWN SLOPE	
SLOPE	
181-090-T3-031 4	

BASIN ELECTRIC POWER COOPERATIVE
 1717 EAST INTERSTATE AVENUE
 BISMARCK, NORTH DAKOTA
 PHONE 701-223-0441