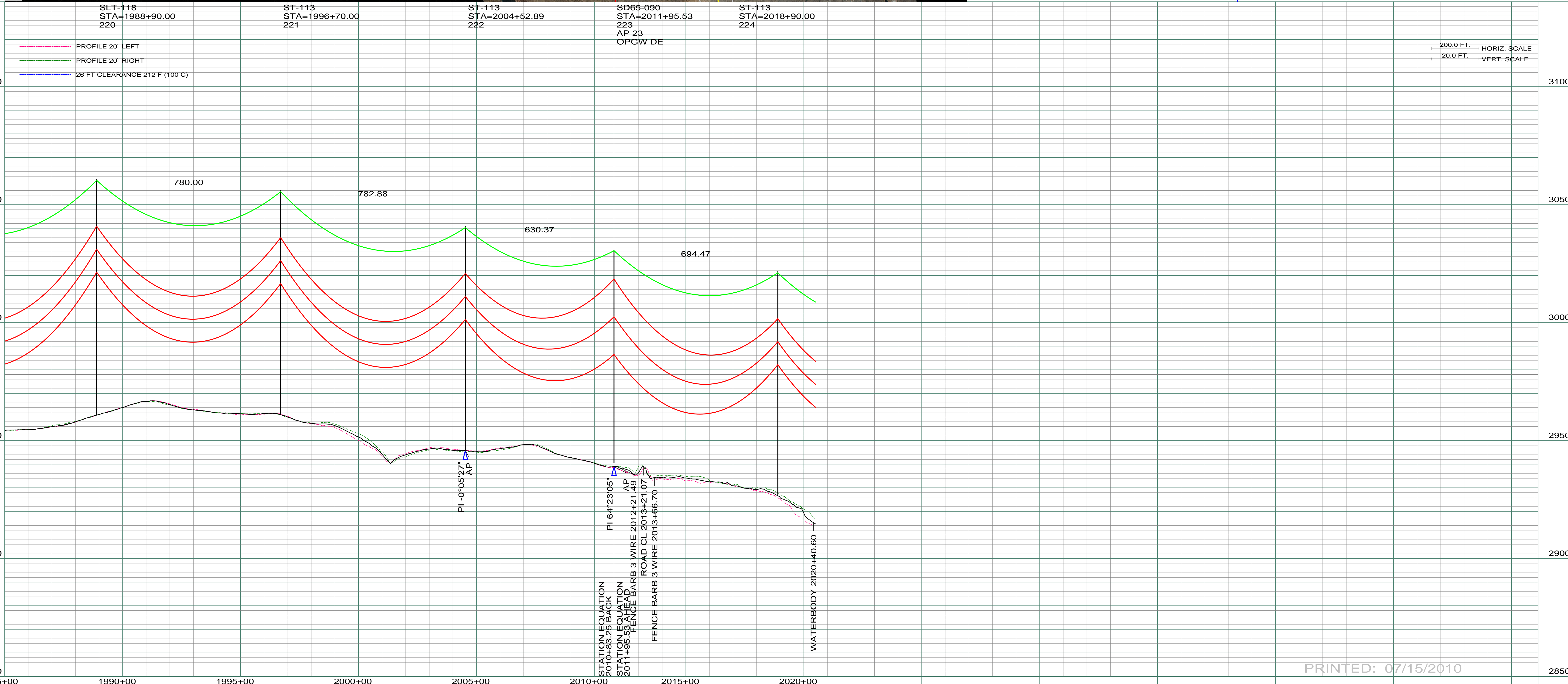


DATE OF AERIAL PHOTOGRAPHY
NOVEMBER 08, 2007
GEODIGITAL INTERNATIONAL



200.0 FT. HORIZ. SCALE
20.0 FT. VERT. SCALE

PRINTED: 07/15/2010

REV	DESCRIPTION	DRWN	DSGN	APPD	DATE	REV	DESCRIPTION	DRWN	DSGN	APPD	DATE
1	ISSUE TO PUBLIC SERVICE COMMISSION	CDB	CDB	DAM	09-05-08						
2	RELEASED FOR BID	CDB	CDB	DAM	01-15-09						
3	ISSUED FOR CONSTRUCTION	CDB	CDB	DAM	03-30-09						
4	AS-BUILT	CDB	CDB	DAM	07-16-10						

STATE NAME	NORTH DAKOTA	NAD83	NDSPCS	INTL	FT	SOUTH	ZONE
CONDUCTOR	1272	MCM	45/7	ACSR			
OPGW	AC-71/571						

DESIGN INFORMATION				
SIZE	STRINGING TENSION	NESC TENSION	DESIGN RULING SPAN	ACTUAL RULING SPAN
CONDUCTOR	1272 MCM 45/7 ACSR	0	800	0
OPGW	AC-71/571	0		

DESIGN BY:	DAM/CDB	08-08-08
DRAWN BY:	CDB	08-08-08
DESIGN CHK:	SW/ULTEIG	08-08-08
DRAFT CHK:		
APPROVED:	DAM	09-05-08

FACILITY:	TRANSMISSION SYSTEM MAINTENANCE
LOCATION UNIT:	181-230KV LINE-RHAME SUBSTATION TO BELFIELD SUBSTATION
RHAME TO BELFIELD 230KV TRANSMISSION LINE	
PLAN AND PROFILE	
MILE 31	

 BASIN ELECTRIC POWER COOPERATIVE 1717 EAST INTERSTATE AVENUE BISMARCK, NORTH DAKOTA PHONE 701-223-0441	COUNTY NAME:	SLOPE
	BASIN DRAWING NO.	REV.
181-090-T3-036	4	