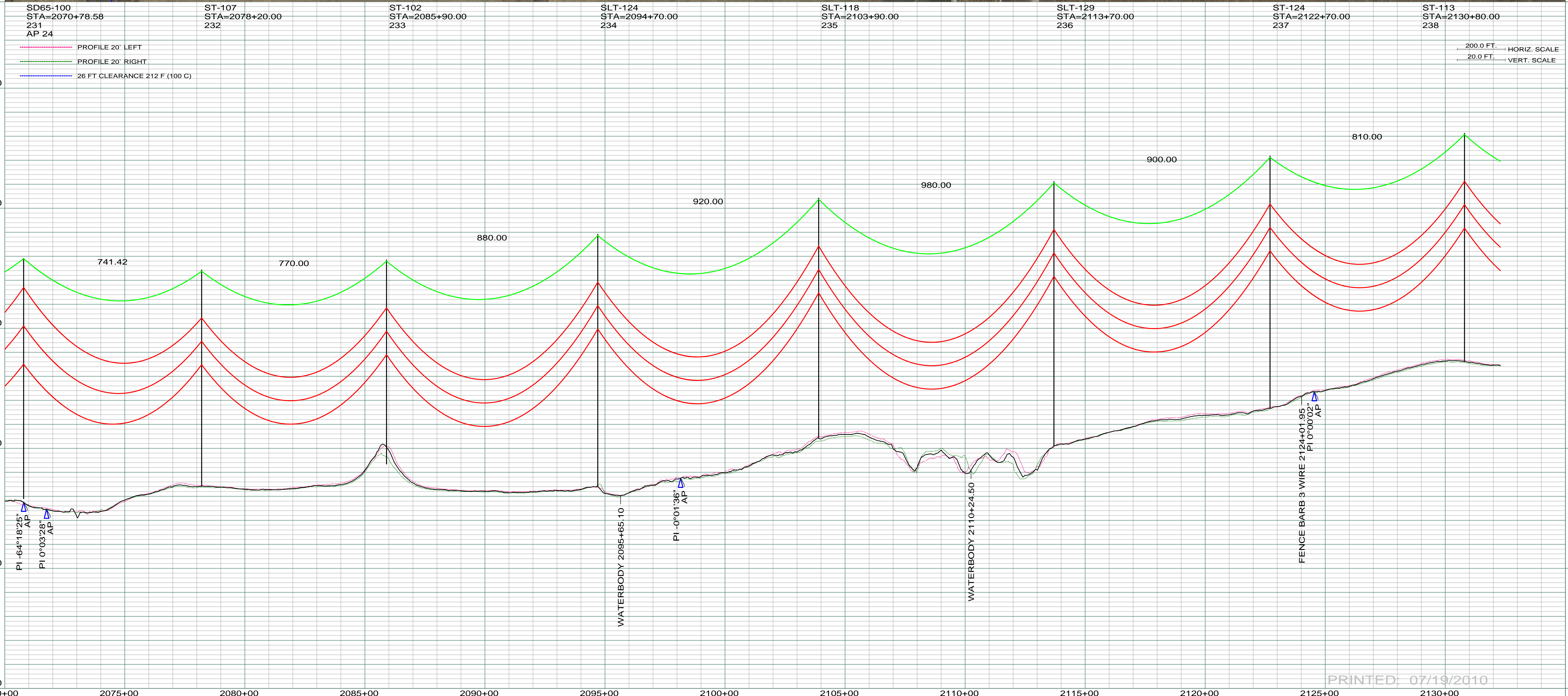


DATE OF AERIAL PHOTOGRAPHY
NOVEMBER 08, 2007
GEODIGITAL INTERNATIONAL



PRINTED: 07/19/2010

REV	DESCRIPTION	DRWN	DSGN	APPD	DATE	REV	DESCRIPTION	DRWN	DSGN	APPD	DATE
1	ISSUE TO PUBLIC SERVICE COMMISSION	CDB	CDB	DAM	09-05-08						
2	RELEASED FOR BID	CDB	CDB	DAM	01-15-09						
3	ISSUED FOR CONSTRUCTION	CDB	CDB	DAM	03-30-09						
4	CUT TOP OF HILL 7 FEET AT STR. 233 LOCATION AS-BUILT	CDB	CDB	DAM	07-16-10						

STATE NAME: NORTH DAKOTA		NAD83 NDSPCS INTL FT SOUTH ZONE			
DESIGN INFORMATION					
CONDUCTOR	1272 MCM 45/7 ACSR	STRINGING TENSION	0	DESIGN RULING SPAN	800
OPGW	AC-71/571	NESC TENSION	0	ACTUAL RULING SPAN	0

DESIGN BY:	DAM/CDB	08-08-08
DRAWN BY:	CDB	08-08-08
DESIGN CHK:	SW/ULTEIG	08-08-08
DRAFT CHK:		
APPROVED:	DAM	09-05-08

FACILITY:		TRANSMISSION SYSTEM MAINTENANCE	
LOCATION UNIT:		181-230KV LINE-RHAME SUBSTATION TO BELFIELD SUBSTATION	
RHAME TO BELFIELD 230KV TRANSMISSION LINE			
SCALE:		COUNTY NAME:	
AS SHOWN		SLOPE	
BASIN DRAWING NO.		REV.	
181-090-T3-038		4	