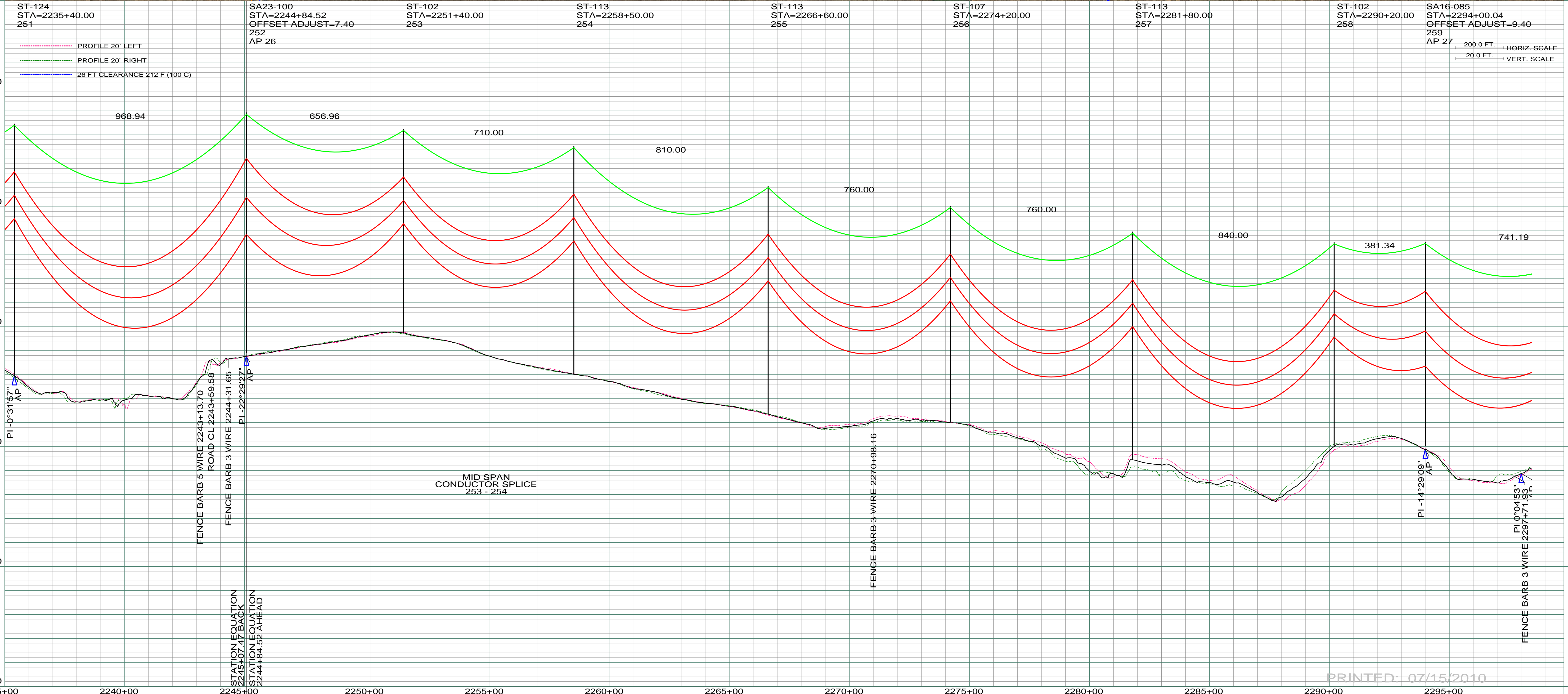
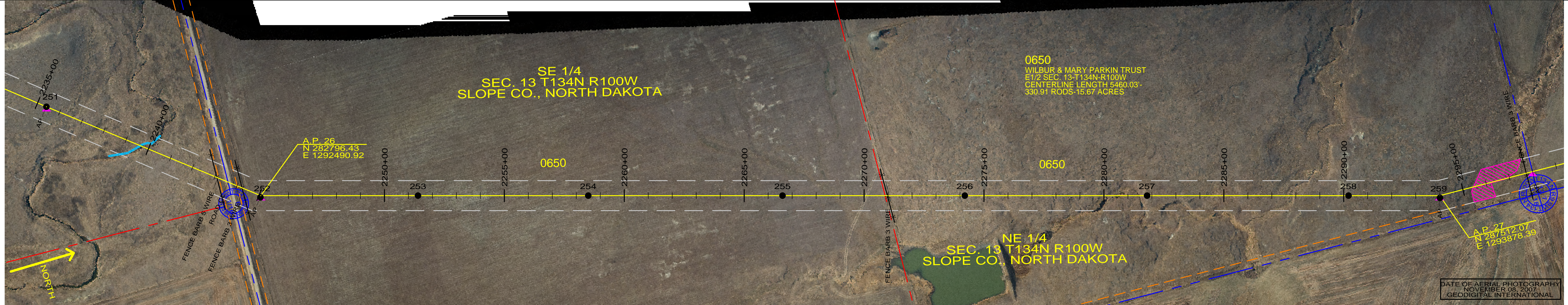


SE 1/4
SEC. 13 T134N R100W
SLOPE CO., NORTH DAKOTA

0650
WILBUR & MARY PARKIN TRUST
E 1/2 SEC. 13 T134N R100W
CENTERLINE LENGTH 5460.03'
330.91 RODS-15.67 ACRES

NE 1/4
SEC. 13 T134N R100W
SLOPE CO., NORTH DAKOTA



REV	DESCRIPTION	DRWN	DSGN	APPD	DATE	REV	DESCRIPTION	DRWN	DSGN	APPD	DATE
1	ISSUE TO PUBLIC SERVICE COMMISSION	CDB	CDB	DAM	09-05-08						
2	RELEASED FOR BID	CDB	CDB	DAM	01-15-09						
3	ISSUED FOR CONSTRUCTION	CDB	CDB	DAM	03-30-09						
4	AS-BUILT	CDB	CDB	DAM	07-16-10						

DESIGN INFORMATION		DESIGN BY:	DATE
CONDUCTOR	1272 MCM 45/7 ACSR	DAM/CDB	08-08-08
OPGW	AC-71/571	CDB	08-08-08
		DESIGN CHK:	08-08-08
		DRAFT CHK:	
		APPROVED:	09-05-08

STATE NAME: NORTH DAKOTA	NAD83 NDSPCS INTL FT SOUTH ZONE	DESIGN BY: DAM/CDB	08-08-08	FACILITY: TRANSMISSION SYSTEM MAINTENANCE
		DRAWN BY: CDB	08-08-08	LOCATION UNIT: 181-230KV LINE-RHAME SUBSTATION TO BELFIELD SUBSTATION
		DESIGN CHK: SW/ULTEIG	08-08-08	RHAME TO BELFIELD 230KV TRANSMISSION LINE
				SCALE: AS SHOWN
				COUNTY NAME: SLOPE
				BASIN DRAWING NO. 181-090-T3-041
				REV. 4

PRINTED: 07/15/2010