

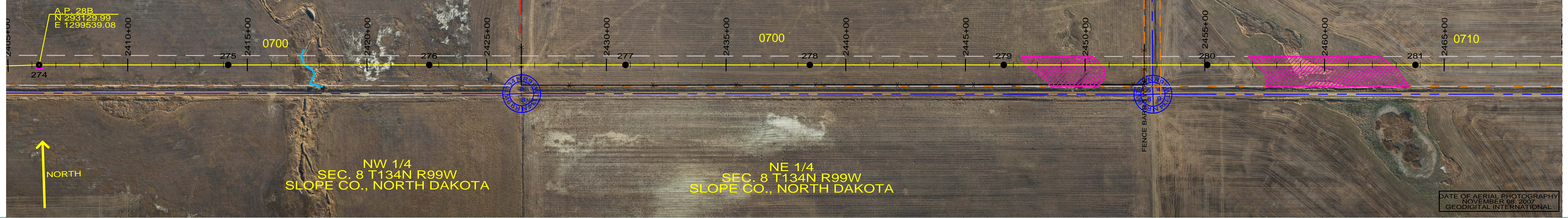
0700
PATRICK & FAYE RUGGLES
S1/2 SEC. 5-T134N-R99W
CENTERLINE LENGTH 5275.80'-319.75 RODS-15.14 ACRES

SE 1/4
SEC. 5 T134N R99W
SLOPE CO., NORTH DAKOTA

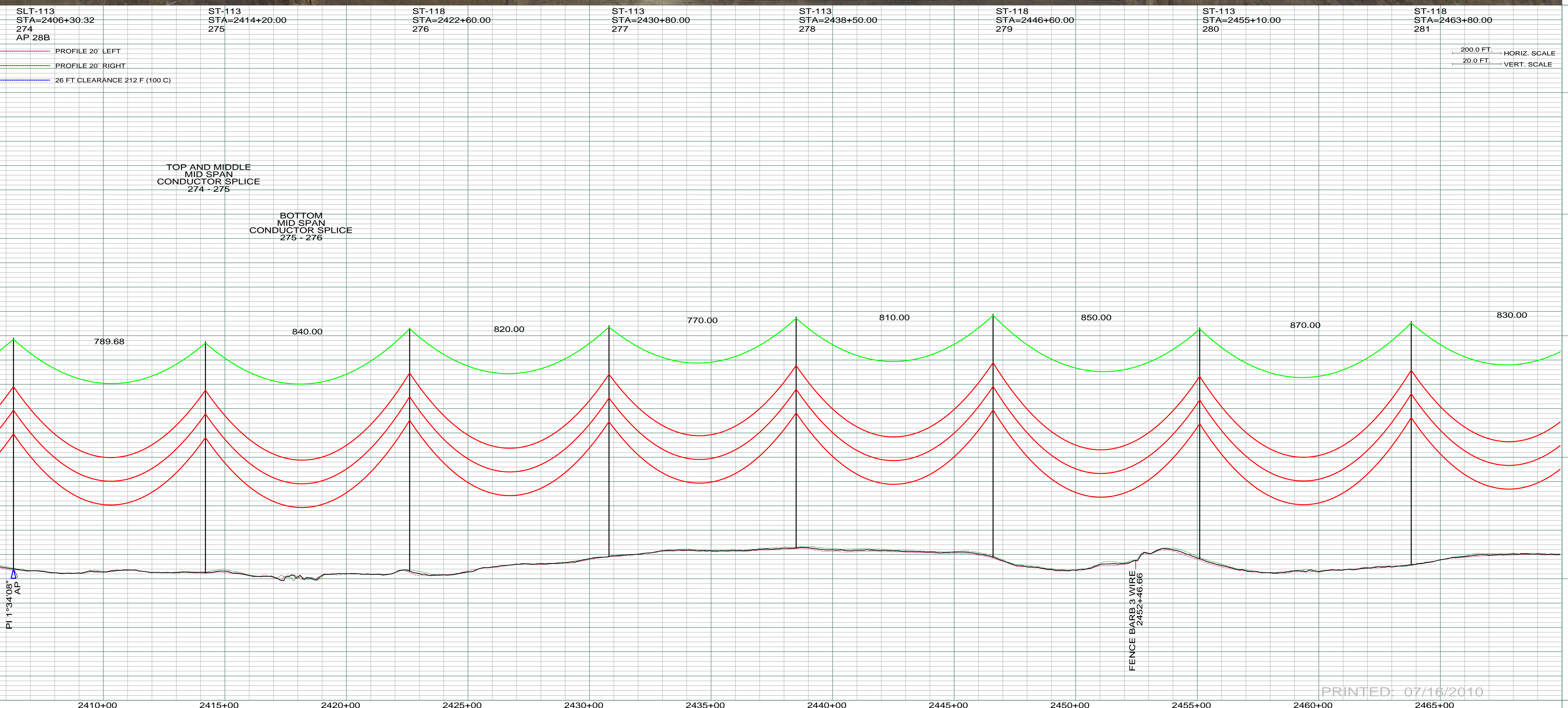
0710
MARGO G. SMITH TRUST
SW1/4 SEC. 4-T134N-R99W
CENTERLINE LENGTH 2640.50'-
160.03 RODS-7.58 ACRES

NW 1/4
SEC. 8 T134N R99W
SLOPE CO., NORTH DAKOTA

NE 1/4
SEC. 8 T134N R99W
SLOPE CO., NORTH DAKOTA



DATE OF AERIAL PHOTOGRAPHY
NOVEMBER 09, 2007
GEODIGITAL INTERNATIONAL



200.0 FT. HORIZ. SCALE
20.0 FT. VERT. SCALE

PRINTED: 07/16/2010

REV	DESCRIPTION	DRWN	DSGN	APPD	DATE	REV	DESCRIPTION	DRWN	DSGN	APPD	DATE
1	ISSUE TO PUBLIC SERVICE COMMISSION	CDB	CDB	DAM	08-08-08						
2	RELEASE FOR BID	CDB	CDB	DAM	01-15-09						
3	ISSUED FOR CONSTRUCTION	CDB	CDB	DAM	03-30-09						
4	AS-BUILT	CDB	CDB	DAM	07-16-10						

STATE NAME:	NAD83	NDSPCS	INTL	FT	SOUTH	ZONE
NORTH DAKOTA						

DESIGN INFORMATION					
CONDUCTOR	SIZE	STRINGING TENSION	NESC TENSION	DESIGN RULING SPAN	ACTUAL RULING SPAN
1272 MCM	45/7 ACSR		0	800	0
OPGW	AC-71/571		0		

DESIGN BY:	DATE
DAM/CDB	08-08-08
DRAWN BY:	DATE
CDB	08-08-08
DESIGN CHK:	DATE
SW/ULTEIG	08-08-08
DRAFT CHK:	
APPROVED:	DATE
DAM	09-05-08

FACILITY:	LOCATION UNIT:
TRANSMISSION SYSTEM MAINTENANCE	181-230KV LINE-RHAME SUBSTATION TO BELFIELD SUBSTATION
RHAME TO BELFIELD 230KV TRANSMISSION LINE	
PLAN AND PROFILE	
MILE 39 & 40	

SCALE:	COUNTY NAME:
AS SHOWN	SLOPE
BASIN DRAWING NO.	REV.
181-090-T3-044	4



BASIN ELECTRIC
POWER COOPERATIVE
1717 EAST INTERSTATE AVENUE
BISMARCK, NORTH DAKOTA
PHONE 701-223-0441