

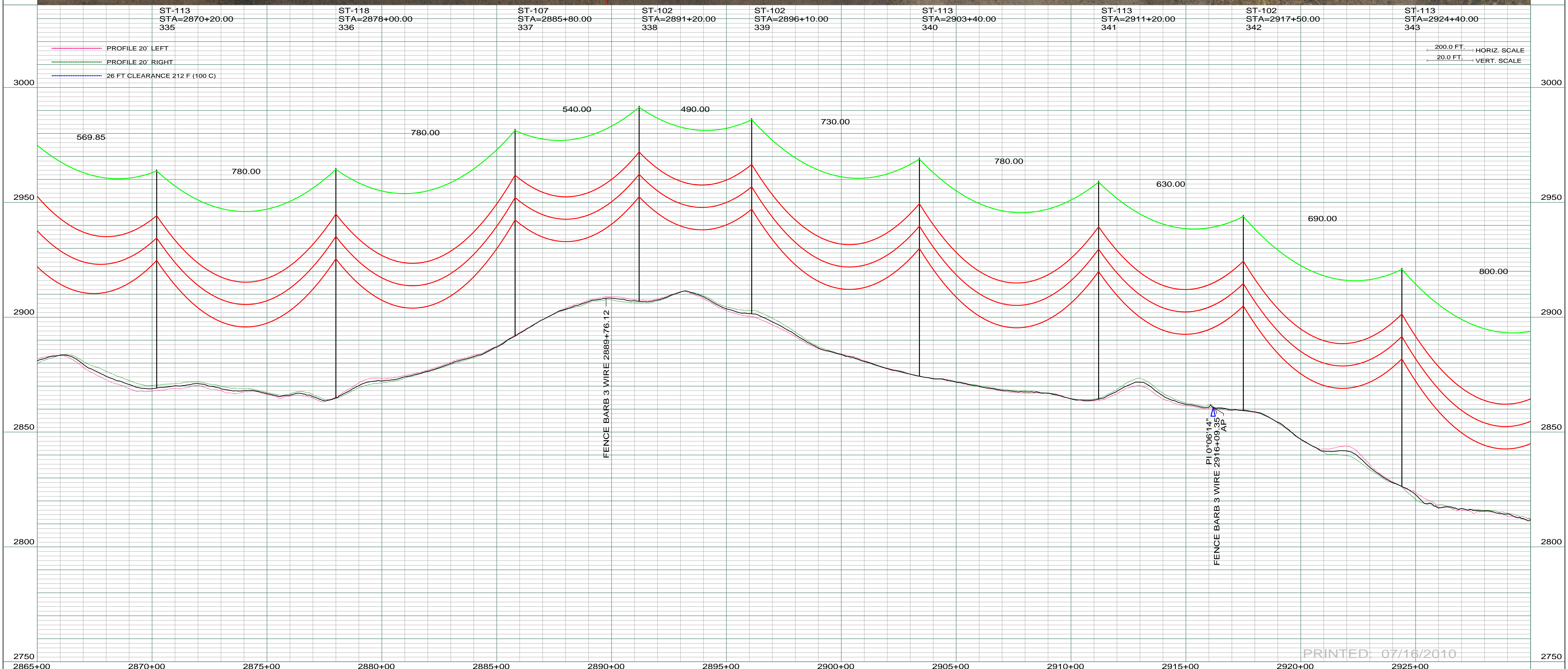
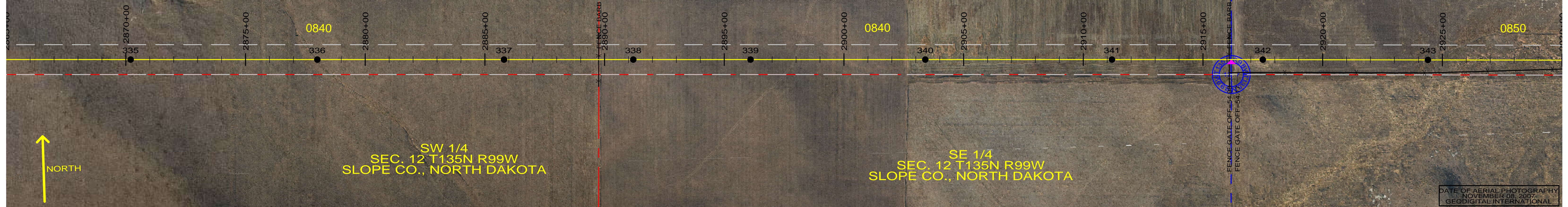
0840
 PETER & MARY FICEK FAMILY TRUST
 N1/2, NW1/4 SW1/4 SEC. 12 T135N R99W
 CENTERLINE LENGTH 5296.61'-321.01' RODS-15.20 ACRES

NE 1/4
 SEC. 12 T135N R99W
 SLOPE CO., NORTH DAKOTA

SW 1/4
 SEC. 12 T135N R99W
 SLOPE CO., NORTH DAKOTA

SE 1/4
 SEC. 12 T135N R99W
 SLOPE CO., NORTH DAKOTA

DATE OF AERIAL PHOTOGRAPHY
 NOVEMBER 08, 2007
 GEODIGITAL INTERNATIONAL



PRINTED: 07/16/2010

REV	DESCRIPTION	DRWN	DSGN	APPD	DATE	REV	DESCRIPTION	DRWN	DSGN	APPD	DATE
1	ISSUE TO PUBLIC SERVICE COMMISSION	CDB	CDB	DAM	08-08-08						
2	RELEASE FOR BID	CDB	CDB	DAM	01-15-09						
3	ISSUED FOR CONSTRUCTION	CDB	CDB	DAM	03-30-09						
4	AS-BUILT	CDB	CDB	DAM	07-16-10						

STATE NAME: NORTH DAKOTA		NAD83 NDSPCS INTL FT SOUTH ZONE			
DESIGN INFORMATION					
CONDUCTOR	1272 MCM 45/7 ACSR	STRINGING TENSION	0	DESIGN RULING SPAN	800
OPGW	AC-71/571	NESC TENSION	0	ACTUAL RULING SPAN	0

DESIGN BY:	DAM/CDB	08-08-08	FACILITY:	TRANSMISSION SYSTEM MAINTENANCE
DRAWN BY:	CDB	08-08-08	LOCATION UNIT:	181-230KV LINE-RHAME SUBSTATION TO BELFIELD SUBSTATION
DESIGN CHK:	SW/ULTEIG	08-08-08	RHAME TO BELFIELD 230KV TRANSMISSION LINE	
DRAFT CHK:			SCALE: AS SHOWN	
APPROVED: DAM		09-05-08	COUNTY NAME: SLOPE	
			BASIN DRAWING NO. 181-090-T3-052	
			REV. 4	