

0900  
 RAYMOND & SHIRLEY HEICK  
 NE 1/4 SEC. 31-T136N-R98W  
 CENTERLINE LENGTH 2641.47'  
 160.09 RODS-7.58 ACRES

SE 1/4  
 SEC. 30 T136N R98W  
 SLOPE CO., NORTH DAKOTA

0910  
 GARDNER TRUST  
 SE 1/4 SEC. 30-T136N-R98W  
 CENTERLINE LENGTH 2642.10'  
 160.13 RODS-7.58 ACRES

NE 1/4  
 SEC. 30 T136N R98W  
 SLOPE CO., NORTH DAKOTA

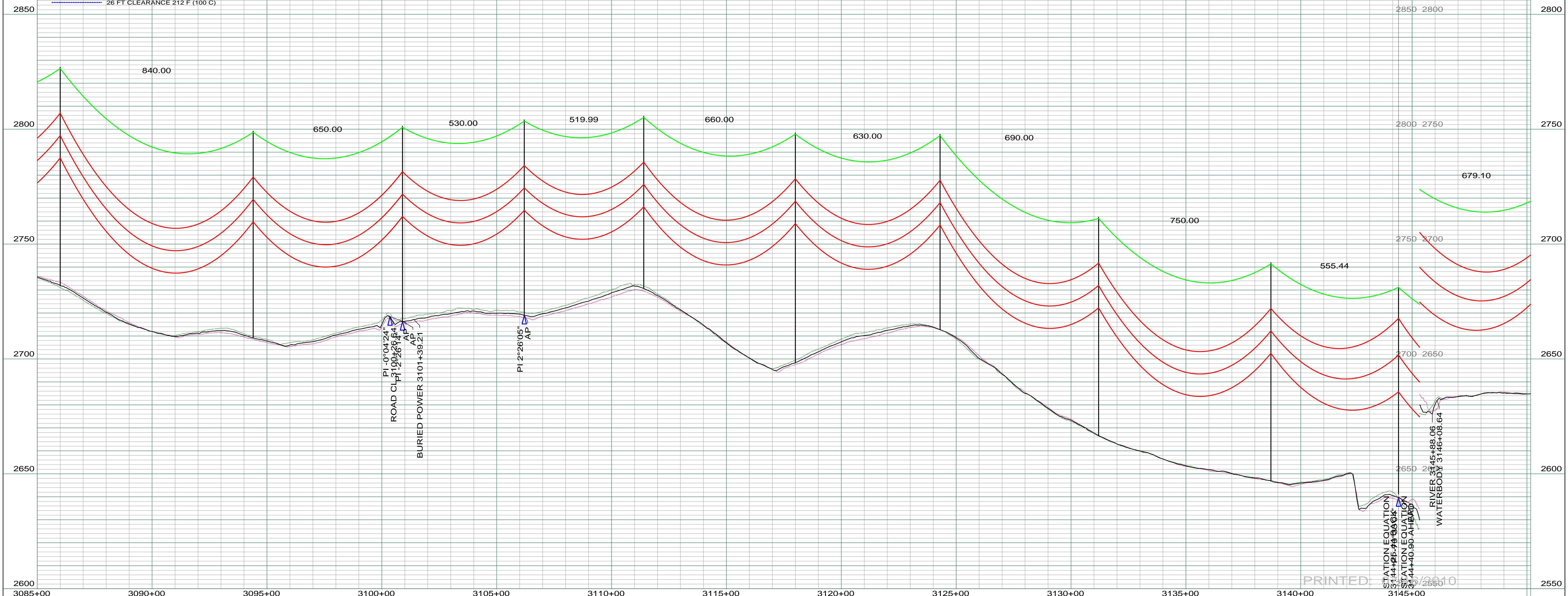


DATE OF AERIAL PHOTOGRAPH: NOVEMBER 08, 2007  
 GEODIGITAL INTERNATIONAL

ST-113 STA=3086+00.01 366	ST-107 STA=3094+40.01 367	ST-102 STA=3100+90.01 368 AP 37A	ST-102 STA=3106+20.01 369 AP 37B	ST-091 STA=3111+40.00 370	ST-118 STA=3118+00.00 371	ST-102 STA=3124+30.00 372	ST-113 STA=3131+20.00 373	ST-113 STA=3138+70.00 374	SD71-090 STA=3144+40.90 375 AP 38 OPGW DE
---------------------------------	---------------------------------	---	---	---------------------------------	---------------------------------	---------------------------------	---------------------------------	---------------------------------	---

— PROFILE 20' LEFT  
 — PROFILE 20' RIGHT  
 — 26 FT CLEARANCE 212 F (100 C)

200.0 FT. — HORIZ. SCALE  
 20.0 FT. — VERT. SCALE



PI 0°04'24"  
 PI 1°00'26"14"  
 ROAD CL 3100+26.64  
 BURIED POWER 3101+39.21  
 PI 2°26'05"  
 AP

STATION EQUATION  
 STA=3144+40.90  
 STATION EQUATION  
 STA=3144+40.90  
 RIVER 3145+88.06  
 WATERBODY 3146+08.64

PRINTED: 11/15/2010

REV	DESCRIPTION	DRWN	DSGN	APPD	DATE	REV	DESCRIPTION	DRWN	DSGN	APPD	DATE	STATE NAME: NORTH DAKOTA	NAD83 NDSPCS INTL FT SOUTH ZONE	DESIGN BY: DAM/CDB	08-08-08	FACILITY: TRANSMISSION SYSTEM MAINTENANCE	BASIN ELECTRIC POWER COOPERATIVE 1717 EAST INTERSTATE AVENUE BISMARCK, NORTH DAKOTA PHONE 701-223-0441	SCALE: AS SHOWN	COUNTY NAME: SLOPE
1	ISSUE TO PUBLIC SERVICE COMMISSION	CDB	CDB	DAM	08-08-08							DESIGN INFORMATION	DESIGN CHECK: SW/ULTEIG	08-08-08	LOCATION UNIT: 181-230KV LINE-RHAME SUBSTATION TO BELFIELD SUBSTATION	BASIN DRAWING NO. 181-090-T3-056		REV. 4	
2	RELEASE FOR BID	CDB	CDB	DAM	01-15-09							CONDUCTOR	1272 MCM 45/7 ACSR						
3	ISSUED FOR CONSTRUCTION	CDB	CDB	DAM	03-30-09							OPGW	AC-71/571						
4	AS-BUILT	CDB	CDB	DAM	07-16-10									DESIGN RULING SPAN	800	ACTUAL RULING SPAN	0		
														DRAFT CHK:					
														APPROVED: DAM	09-05-08				