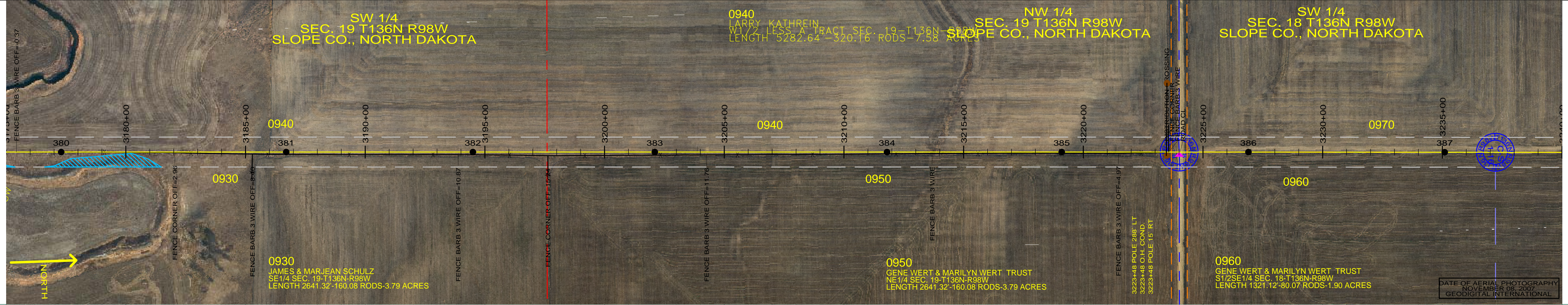


SW 1/4
SEC. 19 T136N R98W
SLOPE CO., NORTH DAKOTA

0940
LARRY KATHREIN
W 1/2 LESS A TRACT SEC. 19 T136N R98W
LENGTH 5282.64 - 320.16 RODS - 7.58 ACRES

NW 1/4
SEC. 19 T136N R98W
SLOPE CO., NORTH DAKOTA

SW 1/4
SEC. 18 T136N R98W
SLOPE CO., NORTH DAKOTA

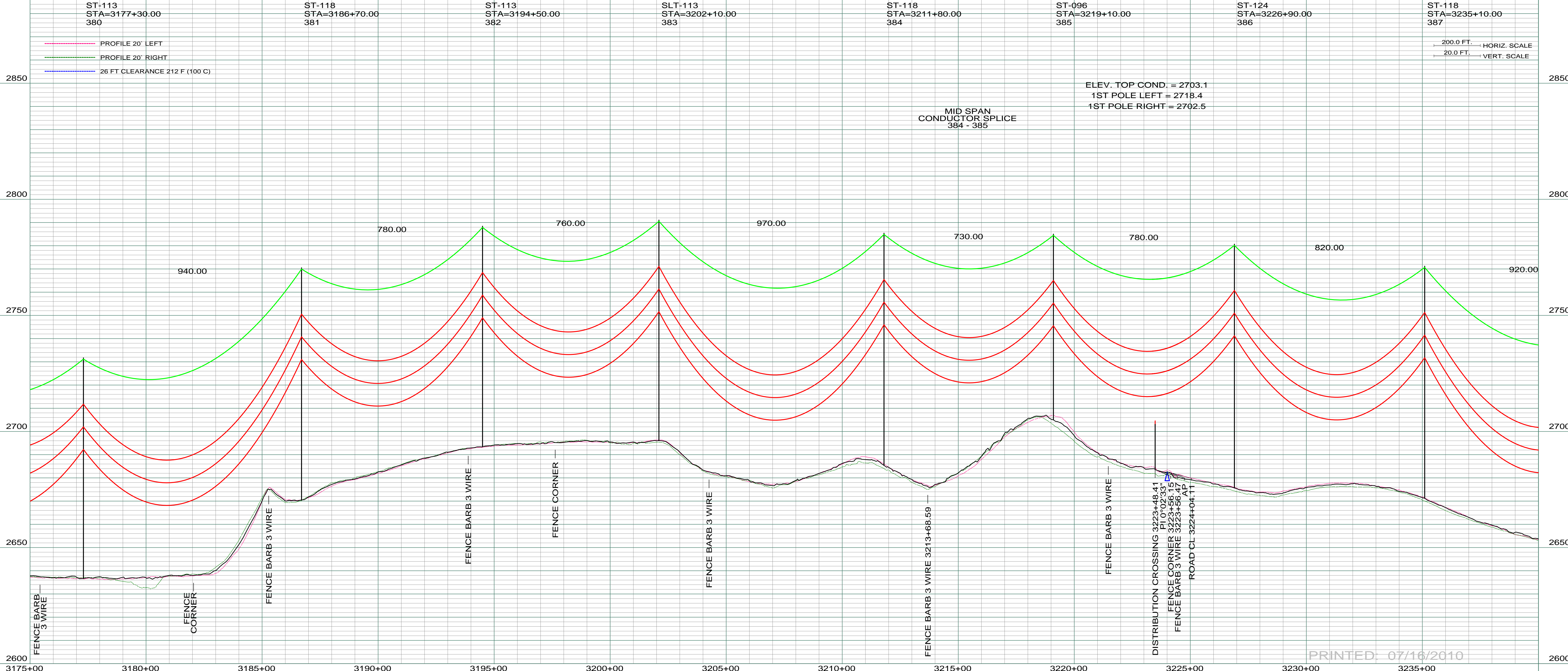


0930
JAMES & MARJEAN SCHULZ
SE 1/4 SEC. 19 T136N R98W
LENGTH 2641.32 - 160.08 RODS - 3.79 ACRES

0950
GENE WERT & MARILYN WERT TRUST
NE 1/4 SEC. 19 T136N R98W
LENGTH 2641.32 - 160.08 RODS - 3.79 ACRES

0960
GENE WERT & MARILYN WERT TRUST
S 1/2 SEC. 18 T136N R98W
LENGTH 1321.12 - 80.07 RODS - 1.90 ACRES

DATE OF AERIAL PHOTOGRAPHY
NOVEMBER 08, 2007
GEODIGITAL INTERNATIONAL



REV	DESCRIPTION	DRWN	DSGN	APPD	DATE	REV	DESCRIPTION	DRWN	DSGN	APPD	DATE
1	ISSUE TO PUBLIC SERVICE COMMISSION	CDB	CDB	DAM	08-08-08						
2	RELEASE FOR BID	CDB	CDB	DAM	01-15-09						
3	ISSUED FOR CONSTRUCTION	CDB	CDB	DAM	03-30-09						
4	AS-BUILT	CDB	CDB	DAM	07-16-10						

STATE NAME:	NAD83 NDSPCS INTL FT SOUTH ZONE
NORTH DAKOTA	

DESIGN INFORMATION					
CONDUCTOR	SIZE	STRINGING TENSION	NESC TENSION	DESIGN RULING SPAN	ACTUAL RULING SPAN
	1272 MCM 45/7 ACSR		0	800	0
	AC-71/571		0		

DESIGN BY:	DAM/CDB	08-08-08
DRAWN BY:	CDB	08-08-08
DESIGN CHK:	SW/ULTEIG	08-08-08
DRAFT CHK:		
APPROVED:	DAM	09-05-08

FACILITY:	TRANSMISSION SYSTEM MAINTENANCE
LOCATION UNIT:	181-230KV LINE-RHAME SUBSTATION TO BELFIELD SUBSTATION
RHAME TO BELFIELD 230KV TRANSMISSION LINE	
PLAN AND PROFILE	
MILE 53 & 55	

SCALE:	AS SHOWN	COUNTY NAME:	SLOPE
BASIN DRAWING NO.	181-090-T3-058	REV.	4

PRINTED: 07/16/2010